

ILLINOIS RACING BOARD



ILLINOIS RACING BOARD

Ralph M. Gonzalez
Jacksonville
Chairman



William E. Jackson
Chicago



James M. Kane
Long Grove



Joseph F. Kindlon
Wheaton



Louise E. O'Sullivan
Chicago



William J. Parrillo
Oak Brook



Lorna E. Propes
Evanston



Leon Shlofrock
Skokie



John B. Simon
Chicago

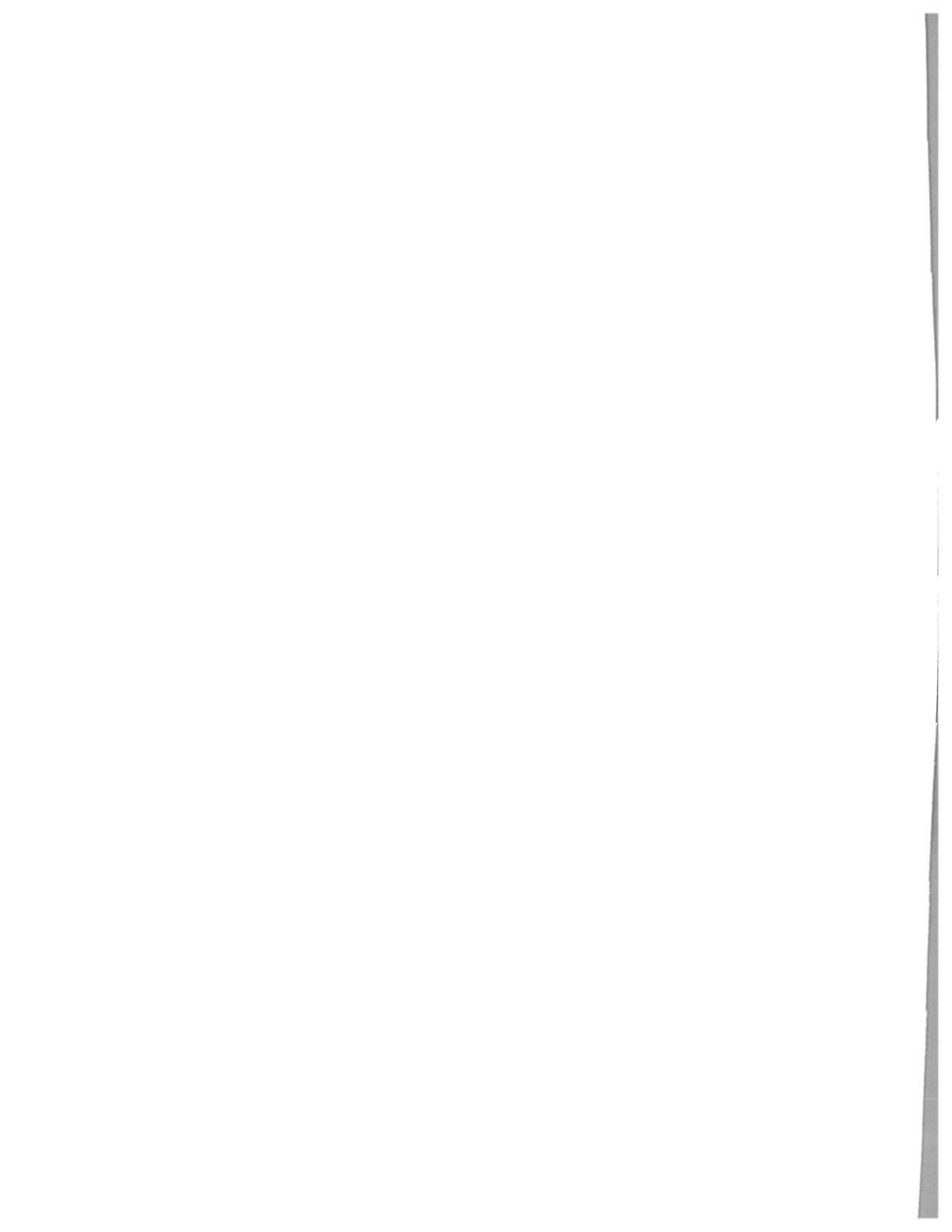


Jack L. Kubik - Executive Director
Marc V. Laino - Deputy Director
Shelley Kalita - Laboratory Director
Bob Lang - State Director of Mutuels

Printed by the Authority of the State of Illinois

6-2000-800-3142159

Printed by contract-800 copies at \$5.47 each

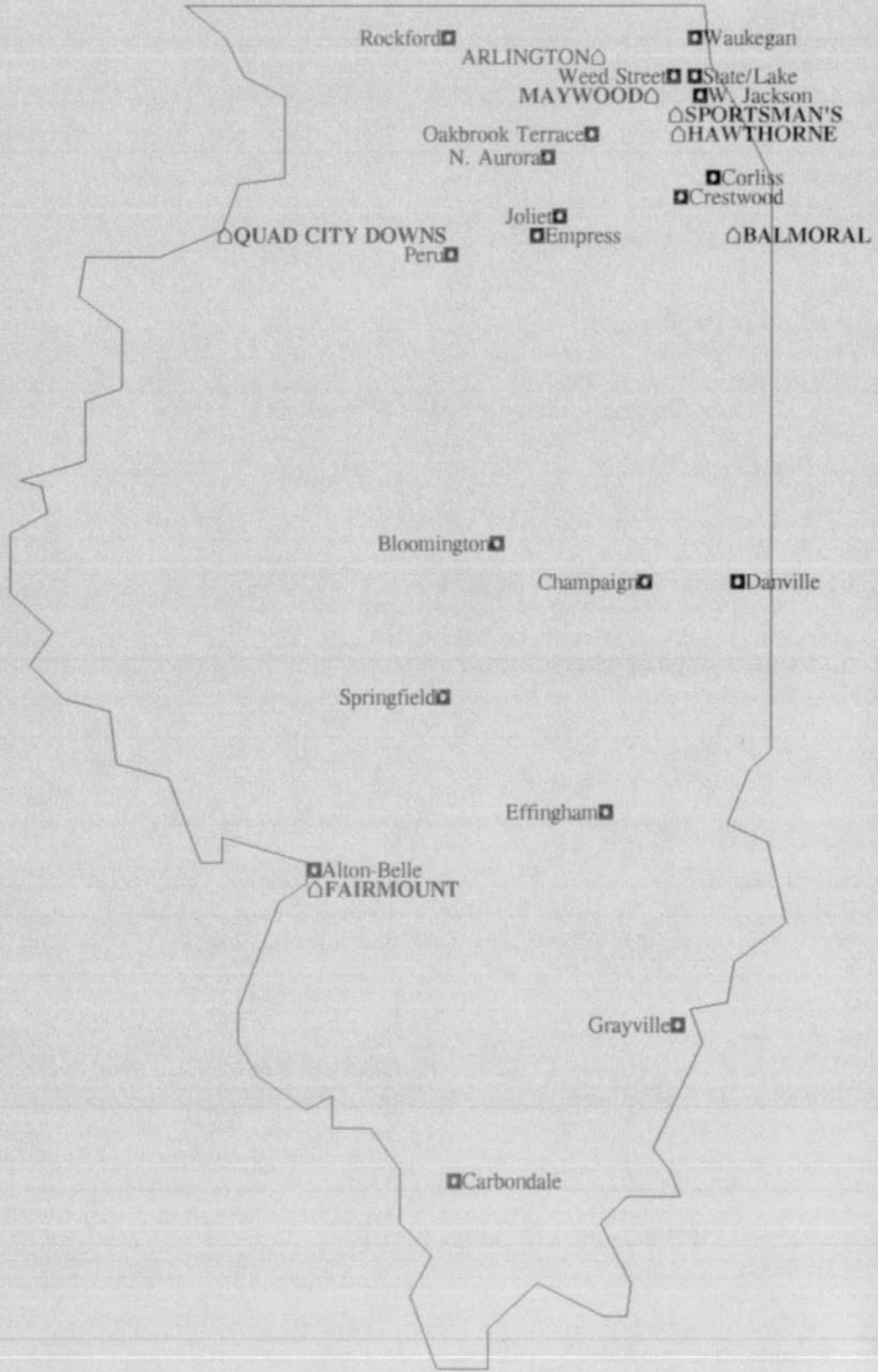


CONTENTS

Map of Illinois Racetracks and OTB Parlors	2
1999 Illinois Horses of the Year	3
Review	4
Laboratory	7
MONEY TO ILLINOIS	
Sources and Allocation of Revenue-Exhibit I	8
Cash Disbursements-Exhibit II	9
STATISTICAL DATA	
1980 - 1999 Illinois Handles	10
1999 Disbursement of Illinois Handle	12
1997 - 1999 Monthly Handle Comparison	13
Comparison of Handle On Track, Intertrack and Off Track	14
On Track Totals	16
Intertrack Totals	17
Off Track Totals	18
All Racing Totals	19
Comparison of Wagering Pools	20
1999 Off Track Parlor and Intertrack Handles	22
Summary of Parlor Surcharges and Revenues to City and County	23
1999 Commingled Handle vs. Simulcast Handle	24
1999 Out-of-State Handle on Illinois Races (commingled).....	26
1999 Illinois Handle on Out-of-State Tracks	27
1999 Major Stake Races.....	28
1999 and 2000 Racing Dates Schedule	29
RACE MEETING STATISTICS	
THOROUGHBRED	
National Jockey Club (Sportsman's) - Hawthorne Race Course	30
Hawthorne Race Course, Inc. - Hawthorne Race Course	31
Ogden-Fairmount, Inc. - Fairmount Park	32
HARNESS	
Balmoral Racing Club, Inc. - Balmoral Park	33
Maywood Park Trotting, Egyptian Trotting and Associates Racing - Maywood Park	37
Ogden-Fairmount, Inc. - Fairmount Park	38
State Fairs - Springfield and DuQuoin	39
1994 - 1999 Percentage of Illinois Handle Wagered on Illinois Races.....	41
INTERTRACK AND OFF TRACK LOCATIONS	
Intertrack Sites	42
Off Track Parlor Sites	44
Breeders Fund Purses and Awards Paid	50

1999 ILLINOIS RACETRACKS AND OTB PARLORS

△ RACETRACK ■ OTB Parlor



1999 ILLINOIS HORSES OF THE YEAR



Buck's Boy -1999 Illinois Horse of the Year
Photo Credit: Rob Moskal & Equine Expressions



Big Tom- 1999 Illinois Harness Horse of the Year
Photo Credit: REB Photos

REVIEW

Total handle on horse racing exceeded \$1 billion for the twelfth consecutive year. Illinois experienced an increase in handle of 1.5% compared to 1998. Of the \$1,103,849,329 wagered in Illinois, thoroughbred meets accounted for \$689,292,456, an increase of almost 2%, while harness meets contributed \$414,556,873, an increase of 1%. Only 34% of all handle in 1999 was on Illinois races, as compared to 36% in 1998. An additional \$516 million, an increase of 12%, was wagered on Illinois races in other states.

Several major announcements were made in 1999, most notably the resignation of Chairman Gene Lamb and the appointment by Governor George Ryan of long-time Board member Ralph Gonzalez to the position of Board Chairman. Gene Lamb was first appointed to the Board by Governor Jim Edgar in 1991. Chairman Gonzalez was appointed to the Board in 1984 by Governor Jim Thompson. In March of 1999, Governor Ryan appointed Jack Kubik to serve as the Board's Executive Director. Prior to his appointment as Executive Director, Mr. Kubik represented the 43rd District in the Illinois House of Representatives for seven consecutive terms.

On June 25, 1999, Governor Ryan signed into law Senate Bill 1017, a complex horse racing/riverboat bill. Key points in this major piece of legislation are: creation of the Horse Racing Equity Fund, elimination of the graduated privilege tax, elimination of the Race Track Improvement Fund (RTIF), uncashed tickets to be split between horsemen and tracks, annual recapture appropriation, an additional .75% for OTB purses on Illinois races, and real estate tax credits for racetracks.

Administered by the IRB, 15% of adjusted gross receipts (from the riverboat casino to be relocated in Cook County) shall be deposited into the Horse Racing Equity Fund to be allocated on an equal basis to the racetracks and to horsemen's purses. The graduated privilege tax imposed on handle was eliminated and replaced by a flat 1.5% pari-mutuel tax effective January 1st, 2000. The RTIF was terminated on December 31st, 1999.

All breakage shall be retained by the tracks with 50% to be used for racetrack improvements and the remaining 50% to be split equally between purses and the tracks.

Starting January 1st, 2000, unclaimed tickets shall be split equally between horsemen's purses and the tracks. In addition, the racing law now requires the Illinois General Assembly to annually appropriate recapture funds from the General Revenue Fund for payment into the horsemen's purse accounts. Effective with the signing of the bill, the purse distribution for OTB parlors wagering on live racing increased by 0.75% to 4.75%. Racetracks will receive a tax credit on their pari-mutuel tax equal to 50% of the real estate taxes paid in the previous year (or 60% of the average real estate taxes paid the prior year by all tracks conducting live racing in the current year).

Other important provisions are as follows: elimination of the 1% HRTA tax on wagering at OTB's (all programs funded from this tax shall be funded from the General Revenue Fund at 1998 funding levels), elimination of the 7.5% tax on out-of-state wagers on Illinois races, the requirement that Fairmount Park conduct a minimum number of race days (125 thoroughbred and 105 standardbred) was repealed, the date by which

a mare in foal must enter Illinois to be considered "Illinois foaled" was changed to December 1st, tracks were deregulated with regard to hours of operation, a Quarter Horse Breeders' Fund was created, and the IRB was directed to conduct a study on account wagering and fixed odds wagering.

Total purses paid, including all supplements, increased in 1999 compared to 1998 by almost 8%. The average total daily purses paid at the Chicagoland thoroughbred tracks were up almost 5% from the previous year while the Chicagoland harness tracks saw an increase in average daily purses of nearly 12%. In 1999, the number of racing programs was increased by 34.

Each track is authorized six off-track facilities (Fairmount Park is permitted seven) under the law, bringing the statewide total to 43 authorized facilities. In 1999, 20 of the 43 off-track facilities permitted under the Act were operational. However, no new OTB's were opened in 1999 and the facility located at the Alton Belle closed on November 21st.

As a result of legislation enacted in 1991, the Racing Industry Charitable Foundation received \$750,000 through racetrack funding. The Foundation provides on-site medical, dental and educational services, health screenings, substance abuse counseling, treatment for gambling disorders, and other related services. The 1999 grant enabled the Foundation to perform approximately 5,600 medical services, 2,300 dental services, 4,800 social services, and 1,500 services for addiction treatment and counseling. The Foundation continues to provide wide ranging health and social services to thoroughbred and harness horsemen throughout the state.

Disbursements from the Race Track Improvement Fund totaled \$2.4 million in 1999. Fairmount Park renovated one barn, remodeled washrooms in the clubhouse, and purchased track equipment. National Jockey

Club constructed eight metal horse barns on Hawthorne's backstretch. Balmoral Park installed fans in the paddock, made improvements to the paddock kitchen, constructed an outside paddock, upgraded the TV broadcast equipment, and purchased track equipment.

Hawthorne Race Course renovated washrooms in the grandstand, purchased track equipment, replaced water heaters in several barns, and constructed a backstretch equipment shelter. Maywood Park remodeled the paddock kitchen, installed cable wiring in the dormitory rooms, purchased track equipment, replaced the roof on one barn, and purchased tables and chairs for the clubhouse.

BUCK'S BOY was voted the 1999 Illinois Thoroughbred Horse of the Year for an unprecedented third straight year. He was the first Illinois-bred to win a Breeders' Cup race, the \$2 million Breeder's Cup Turf in 1998, and the first Illinois-bred to be voted an Eclipse Award that goes to North America's finest male grass horse. Owned by George Bunn's Quarter B Farm and trained by Noel Hickey, the seven-year-old gelded son of Bucksplasher finished third in the \$2 million Breeders' Cup Turf race at Gulfstream Park. In 1999, he won once in three starts and earned \$292,300. For his career, Buck's Boy has won 15 of his 29 starts and \$2.6 million in purse money.

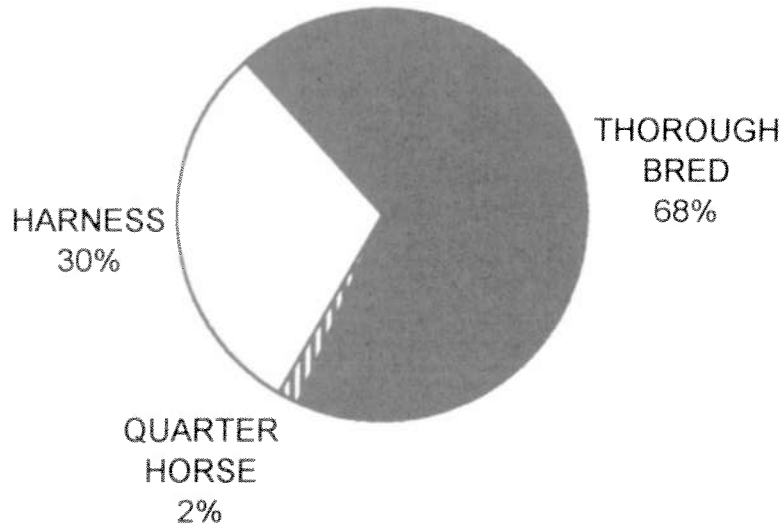
Trained and driven by Joe Anderson, BIG TOM was voted the 1999 Illinois Harness Horse of the Year. This four-year-old colt pacer by Cole Muffler is owned by John Leahy, Anderson Racing, and Tom Lewandowski. Big Tom won 19 of his 23 starts in 1999 with earnings of \$340,850 and a seasons record of 1:49 4/5. In his career, he won 36 of 51 starts and \$907,665. He took his lifetime record of 1:49 2/5 during his three-year-old campaign. Among his victories in 1999 were the \$180,000 American-National at Balmoral Park, where he set a new stakes record of 1:50 4/5 and the \$276,750 final of

the Nadia Lobell Stake at Garden State Park.

At its September 21st hearing for the allocation of year 2000 race dates, the Board awarded spring thoroughbred dates to National Jockey Club at Sportsman's Park, summer thoroughbred dates to Arlington International Racecourse and fall

thoroughbred dates to Hawthorne Race Course. Fairmount Park was awarded an 11 month thoroughbred meet, but did not submit an application for harness racing dates. With respect to the harness schedule, Maywood Park and Balmoral Park were granted race dates identical to their 1999 schedules.

ILLINOIS HANDLE ON LIVE AND SIMULCAST RACES



<u>YEAR</u>	<u>ILLINOIS HANDLE</u>	<u>STATE REVENUE</u>	<u>PURSES DISTRIBUTED</u>
1980	1,004,896.061	70,209,784	71,989,067
1981	1,038,061,869	72,573,515	75,835,950
1982	972,684,613	67,512,158	74,093,871
1983	964,058,574	66,474,866	73,485,330
1984	1,018,165,679	64,564,548	76,728,985
1985	923,234,631	60,599,368	72,224,237
1986	838,346,834	51,462,300	68,969,980
1987	964,637,340	57,096,894	78,996,744
1988	1,005,631,974	46,308,994	78,266,712
1989	1,193,202,530	43,289,387	94,392,895
1990	1,252,368,115	45,723,937	95,887,189
1991	1,248,161,065	46,318,927	93,065,342
1992	1,290,919,614	44,744,193	92,864,207
1993	1,282,020,262	47,571,875	90,565,845
1994	1,238,762,950	46,624,337	89,668,003
1995	1,201,999,292	44,529,168	90,705,636
1996	1,232,867,396	45,758,661	95,607,445
1997	1,180,033,714	45,133,914	87,984,889
1998	1,087,061,250	42,072,401	84,446,511
1999	1,103,849,329	42,404,844	91,579,750

** Over \$3 million in uncashed tickets not submitted in 1992*

LABORATORY

During 1999, the Illinois Racing Board Laboratory conducted one of the most comprehensive equine drug testing programs in the country using enzyme linked immunosorbent assays (ELISA) on a routine basis. An expanded menu of ELISA tests allowed the detection of the bronchodilator drug bitoterol in a harness racehorse for the first time in Illinois. In addition to executing a state of the art prohibited drug testing program, the laboratory continued its controlled medication program in 1999 by routinely testing for blood threshold levels of three substances, Furosemide, Phenylbutazone and TCO2. The laboratory also tested and reported on over 170 special exhibit items such as syringes and drug vials that were collected or seized as contraband at the race tracks.

The laboratory continued participation in the International Association of Racing Commissioners Quality Assurance Program and in the International Proficiency Testing Program conducted by the Association of Official Racing Chemists, maintaining a perfect score on all blinds and proficiencies in 1999.

1999 LABORATORY TEST SAMPLES

POST RACE	<u>URINE</u>	<u>BLOOD</u>	<u>TOTAL</u>
THOROUGHBRED	3,964	4,247	8,211
HARNESS	<u>6,934</u>	<u>7,285</u>	<u>14,219</u>
TOTAL	10,898	11,532	22,430
PROHIBITED DRUG POSITIVES			
THOROUGHBRED			12
HARNESS			<u>17</u>
TOTAL DRUG POSITIVES			29
PHENYLBUTAZONE VIOLATIONS			
THOROUGHBRED OVERAGES			26
HARNESS OVERAGES			<u>23</u>
TOTAL OVERAGES			49
LASIX VIOLATIONS			
THOROUGHBRED OVERAGES			2
HARNESS OVERAGES			<u>0</u>
TOTAL OVERAGES			2
TCO2 VIOLATIONS			
THOROUGHBRED OVERAGES			0
HARNESS OVERAGES			<u>6</u>
TOTAL OVERAGES			6
PRE-RACE TESTING			
	SALIVA COCAINE POSITIVES		
THOROUGHBRED			0
HARNESS			<u>0</u>
TOTAL			0

**ILLINOIS RACING BOARD
STATEMENT OF SOURCE AND ALLOCATION OF REVENUE
FOR THE 1999 RACING YEAR**

SOURCE OF REVENUE:

Application and License Fees of Racing Associations.....	\$	101,330
Admission Taxes.....	\$	125,353
Privilege Tax on Pari-Mutuel Wagering*.....	\$	25,569,050
H.R.T.A. Tax on Pari-Mutuel Wagering.....	\$	5,793,168
Breakage from Pari-Mutuel Wagering.....	\$	5,821,007
Licensing of Racing Personnel.....	\$	245,664
Fingerprint Fees.....	\$	97,470
Uncashed Pari-Mutuel Tickets (1997).....	\$	4,548,918
Horsemen's Fines.....	\$	93,300
Miscellaneous Sources.....	\$	9,584
TOTAL STATE REVENUES RECEIVED	\$	42,404,844
2% of OTB Handle to City and County	\$	11,586,335
City (Chicago) OTB Admission Tax	\$	837,859
On Track City Admission Tax	\$	49,406
County Commingling Tax (2.5% of Commission)	\$	356,186
Intertrack Surcharge to County (20 %)	\$	770,733
TOTAL LOCAL GOVERNMENT REVENUES RECEIVED	\$	13,600,518
TOTAL REVENUES RECEIVED	\$	56,005,362

ALLOCATION OF REVENUE:

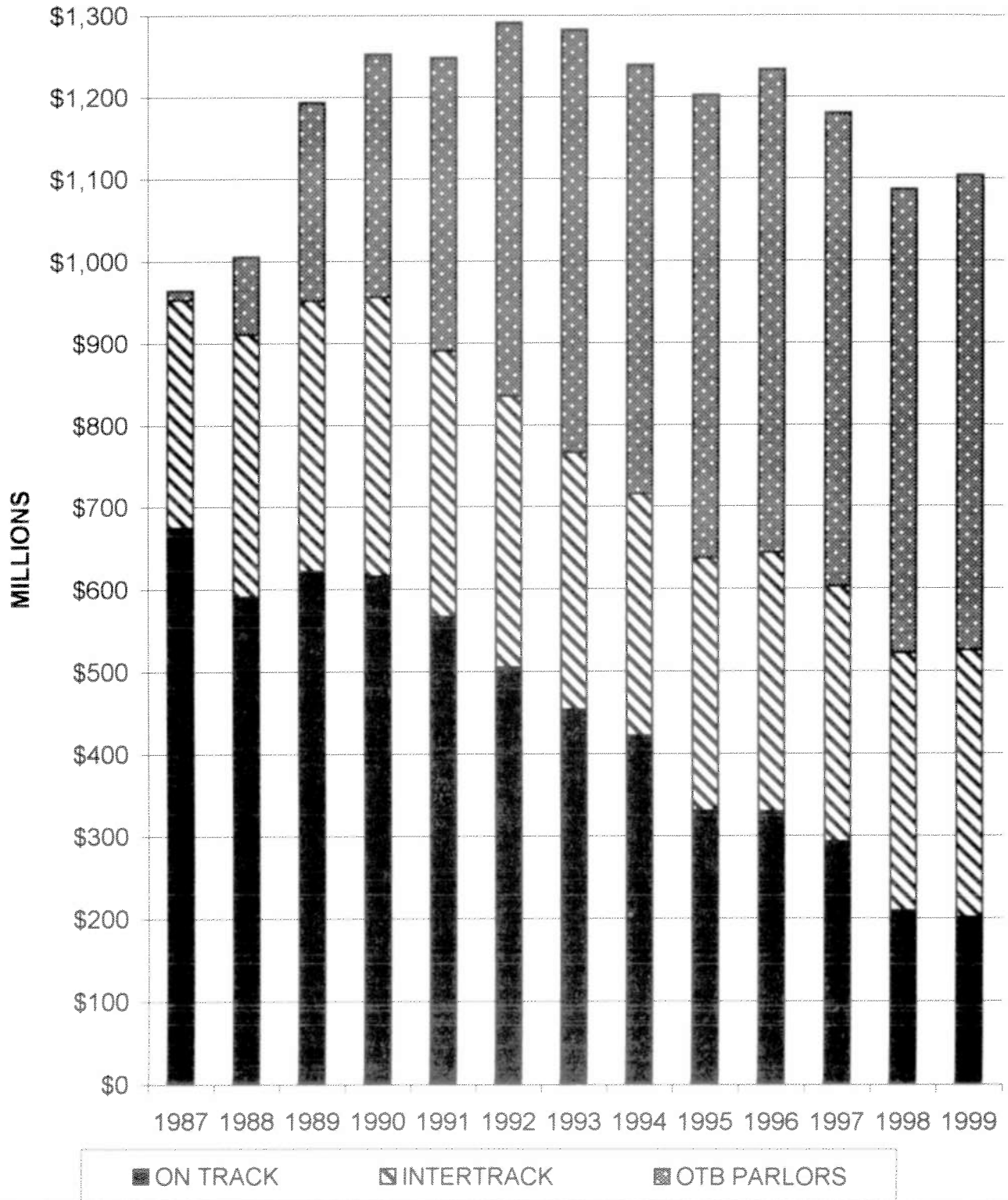
General Revenue Fund.....	\$	3,518,651
Veteran's Rehabilitation Fund.....	\$	4,548,918
Agricultural Premium Fund.....	\$	12,784,525
Metropolitan Exposition, Auditorium and Office Building Fund.....	\$	8,821,322
Fair and Exposition Fund.....	\$	124,172
Build Illinois Fund.....	\$	1,665,662
Horse Racing Tax Allocation Fund.....	\$	5,793,168
Fingerprint License Fund.....	\$	97,470
Illinois Standardbred Breeders Fund.....	\$	673,958
Illinois Thoroughbred Breeders Fund.....	\$	1,466,494
Race Track Improvement Fund.....	\$	2,910,504
TOTAL STATE REVENUES ALLOCATED.....	\$	42,404,844
To Cities	\$	6,680,433
To Counties	\$	6,920,086
TOTAL LOCAL GOVERNMENT REVENUES ALLOCATED.....	\$	13,600,518
TOTAL REVENUES ALLOCATED.....	\$	56,005,362

* Privilege Tax includes \$ 1,161,290 when tracks export their signal out to other states and the State receives 7.5% of the track's commission.

**ILLINOIS RACING BOARD
STATEMENT OF CASH DISBURSEMENTS
FOR THE 1999 RACING YEAR**

	GENERAL ADMINISTRATION	SUPERVISION OF RACE MEETS	LABORATORY	TOTAL
Salary Expenses, including expense of Retirement and Social Security.....	1,325,801	2,832,910	756,169	4,914,880
Contractual Services: Freight, Repairs, Rentals, Postage, Professional Services, etc	202,700	69,221	437,305	709,226
Hearing Officers.....	1,469	0	0	1,469
Travel Expenses.....	29,195	42,233	3,369	74,797
Commodities: Office Supplies, Laboratory and Veterinarian Supplies, Repair Parts, etc	12,853	24,112	467,891	504,856
Printing.....	5,602	447	2,705	8,754
Equipment.....	38,588	83,688	133,836	256,112
Telecommunications.....	71,158	0	5,920	77,078
Operating Automotive Equipment.....	11,642	1,803	87	13,532
Refunds.....	0	406	0	406
Total Operating Expenses	1,699,008	3,054,820	1,807,282	6,561,110
Payments to Racing Associations, of moneys held in Trust, for Improvements to Race Track Facilities	2,354,879	0	0	2,354,879
Total 1999 Disbursements	4,053,887	3,054,820	1,807,282	8,915,989

ILLINOIS HANDLE 1987-1999



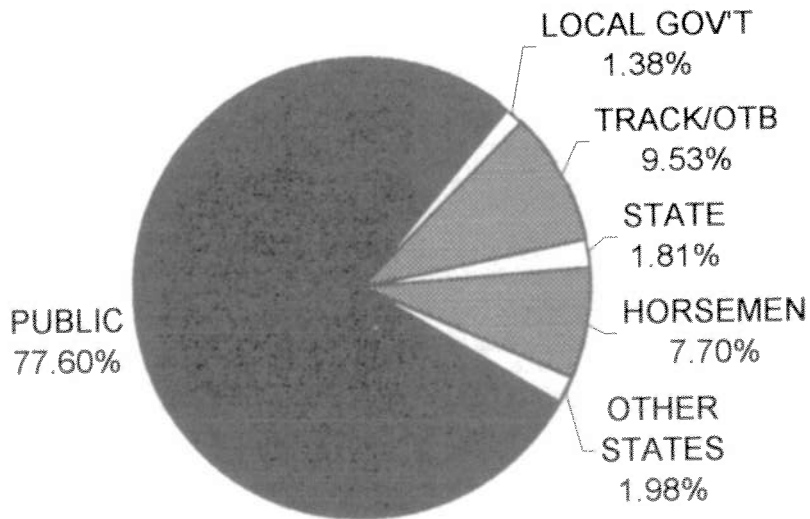
NUMBER OF PARLORS:

1987=2, 1988=5, 1989=8, 1990=9, 1991=11, 1992=20, 1993=21, 1994-1995=23, 1996-1997=22, 1998-1999=20

1980 - 1999 ILLINOIS HANDLE TOTALS						
	ON TRACK	INTERTRACK	OFF TRACK	TOTAL		
	THOROUGHBRED	THOROUGHBRED	THOROUGHBRED	THOROUGHBRED MEETS		
1980	504,300,802	0	0	504,300,802	1980	
1981	536,604,635	0	0	536,604,635	1981	
1982	496,698,530	0	0	496,698,530	1982	
1983	483,102,888	0	0	483,102,888	1983	
1984	439,580,028	131,402,659	0	570,982,687	1984	
1985	413,499,578	107,756,838	0	521,256,416	1985	
1986	336,067,733	117,587,272	0	453,655,005	1986	
1987	356,421,707	194,440,313	6,491,923	557,353,943	1987	
1988	300,440,988	210,116,491	52,217,122	562,774,601	1988	
1989	362,027,974	204,424,200	134,256,244	700,708,418	1989	
1990	358,258,669	205,490,935	157,175,600	720,925,204	1990	
1991	337,354,770	181,590,802	178,797,671	697,743,243	1991	
1992	311,469,954	168,456,647	219,595,842	699,522,443	1992	
1993	285,304,997	163,196,102	251,089,094	699,590,193	1993	
1994	269,292,713	154,548,452	257,743,541	681,584,706	1994	
1995	208,971,670	161,026,595	284,072,667	654,070,932	1995	
1996	224,480,978	165,164,793	307,428,219	697,073,990	1996	
1997	203,602,521	165,229,200	310,108,794	678,940,515	1997	
1998	145,599,880	191,893,259	339,166,726	676,659,865	1998	
1999	137,231,659	203,667,305	348,393,492	689,292,456	1999	
	ON TRACK	INTERTRACK	OFF TRACK	TOTAL		
	HARNESS	HARNESS	HARNESS	HARNESS MEETS		
1980	500,595,259	0	0	500,595,259	1980	
1981	501,457,234	0	0	501,457,234	1981	
1982	475,986,083	0	0	475,986,083	1982	
1983	480,955,686	0	0	480,955,686	1983	
1984	393,772,427	53,410,565	0	447,182,992	1984	
1985	350,445,586	51,532,629	0	401,978,215	1985	
1986	310,575,635	74,116,194	0	384,691,829	1986	
1987	317,966,134	83,969,761	5,347,502	407,283,397	1987	
1988	289,706,937	110,485,223	42,665,213	442,857,373	1988	
1989	258,603,812	125,921,999	107,968,301	492,494,112	1989	
1990	256,855,703	134,948,222	139,638,986	531,442,911	1990	
1991	228,205,387	142,874,593	179,337,842	550,417,822	1991	
1992	193,087,205	162,203,257	236,106,709	591,397,171	1992	
1993	167,541,086	150,389,103	264,499,880	582,430,069	1993	
1994	151,493,533	139,555,386	266,129,325	557,178,244	1994	
1995	121,047,072	145,351,015	281,530,273	547,928,360	1995	
1996	104,102,288	148,996,834	282,694,284	535,793,406	1996	
1997	88,580,572	144,422,036	268,090,591	501,093,199	1997	
1998	62,378,668	120,957,134	227,065,583	410,401,385	1998	
1999	63,453,215	120,180,400	230,923,258	414,556,873	1999	
	ON TRACK	INTERTRACK	OFF TRACK	TOTAL		
	ALL RACING	ALL RACING	ALL RACING	ALL RACING MEETS		
1980	1,004,896,061	0	0	1,004,896,061	1980	
1981	1,038,061,869	0	0	1,038,061,869	1981	
1982	972,684,613	0	0	972,684,613	1982	
1983	964,058,574	0	0	964,058,574	1983	
1984	833,352,455	184,813,224	0	1,018,165,679	1984	
1985	763,945,164	159,289,467	0	923,234,631	1985	
1986	646,643,368	191,703,466	0	838,346,834	1986	
1987	674,387,841	278,410,074	11,839,425	964,637,340	1987	
1988	590,147,925	320,601,714	94,882,335	1,005,631,974	1988	
1989	620,631,786	330,346,199	242,224,545	1,193,202,530	1989	
1990	615,114,372	340,439,157	296,814,586	1,252,368,115	1990	
1991	565,560,157	324,465,395	358,135,513	1,248,161,065	1991	
1992	504,557,159	330,659,904	455,702,551	1,290,919,614	1992	
1993	452,846,083	313,585,205	515,588,974	1,282,020,262	1993	
1994	420,786,246	294,103,838	523,872,866	1,238,762,950	1994	
1995	330,018,742	306,377,610	565,602,940	1,201,999,292	1995	
1996	328,583,266	314,161,827	590,122,503	1,232,867,396	1996	
1997	292,183,093	309,651,236	578,199,385	1,180,033,714	1997	
1998	207,978,548	312,850,393	566,232,309	1,087,061,250	1998	
1999	200,684,874	323,847,705	579,316,750	1,103,849,329	1999	

1999 DISBURSEMENT OF ILLINOIS HANDLE

1999 Illinois Handle	1,103,849,329	Track/OTB	Horsemen	State	Local Gov't	Public	Other States
Track Commission	93,937,886	93,937,886					
Purses Earned	79,903,692		79,903,692				
Privilege Tax	24,407,760			24,407,760			
HRTA Tax	5,793,168			2,932,098	2,861,070		
Out-of-State Fee (3%)	21,889,180						21,889,180
Public Pool	877,917,643					877,917,643	
Breakage	5,821,007	2,910,504		2,910,504		(5,821,007)	
OnTrack Surcharge	486,090	486,090				(486,090)	
ITW Surcharge	3,853,663	1,541,465	1,541,465		770,733	(3,853,663)	
OTB Surcharge	11,237,316	(349,019)			11,586,335	(11,237,316)	
Recapture	10,254,087	10,254,087		(10,254,087)			
RICF Charity	750,000	(750,000)	750,000				
Breeders Awards	2,853,918	(2,853,918)	2,853,918				
TOTAL		105,177,095	85,049,075	19,996,275	15,218,137	856,519,567	21,889,180
		9.53%	7.70%	1.81%	1.38%	77.60%	1.98%
Out-of State Handle on Illinois Races	516,104,829						
Simulcast Fee (3%)	15,483,145	6,967,415	6,967,415	1,161,236	387,079		(15,483,145)
GRAND TOTALS		112,144,510	92,016,490	21,157,511	15,605,216	856,519,567	6,406,035



ILLINOIS MONTHLY HANDLE COMPARISON 1997, 1998, 1999

LIVE AND SIMULCAST HANDLE COMBINED

	1997	1998	1999	97 to 98 +/- %	98 to 99 +/- %
JANUARY	79,963,105	72,064,324	73,882,936	-10%	3%
FEBRUARY	89,995,153	81,062,664	87,857,632	-10%	8%
MARCH	106,870,737	96,703,149	96,276,700	-10%	-0%
APRIL	98,958,292	96,418,741	99,750,097	-3%	3%
MAY	113,339,294	106,077,737	108,674,895	-6%	2%
JUNE	98,150,306	92,279,841	94,349,752	-6%	2%
JULY	107,473,296	96,683,252	100,173,661	-10%	4%
AUGUST	114,377,969	97,150,933	93,287,183	-15%	-4%
SEPTEMBER	93,609,774	84,421,840	88,385,335	-10%	5%
OCTOBER	94,190,775	94,189,260	92,361,527	-0%	-2%
NOVEMBER	95,039,267	94,597,874	88,939,624	-0%	-6%
DECEMBER	88,065,746	75,411,635	79,909,987	-14%	6%
TOTAL	1,180,033,714	1,087,061,250	1,103,849,329	-8%	2%

LIVE ILLINOIS RACES ONLY

	1997	1998	1999	97 to 98 +/- %	98 to 99 +/- %
JANUARY	34,707,247	4,530,404	13,786,986	-87%	204%
FEBRUARY	36,851,753	14,841,426	20,993,721	-60%	41%
MARCH	45,088,681	34,025,673	28,562,550	-25%	-16%
APRIL	46,918,889	39,206,402	35,090,347	-16%	-10%
MAY	52,490,227	43,420,198	38,859,734	-17%	-11%
JUNE	45,377,750	36,442,399	33,307,992	-20%	-9%
JULY	53,593,867	42,164,143	37,552,357	-21%	-11%
AUGUST	58,754,230	42,110,354	36,591,807	-28%	-13%
SEPTEMBER	47,107,582	36,930,229	36,472,084	-22%	-1%
OCTOBER	46,414,801	39,244,711	35,749,038	-15%	-9%
NOVEMBER	43,764,574	37,013,193	31,307,156	-15%	-15%
DECEMBER	42,639,727	17,422,660	25,936,215	-59%	49%
TOTAL	553,709,328	387,351,792	374,209,987	-30%	-3%

SIMULCAST RACES ONLY

	1997	1998	1999	97 to 98 +/- %	98 to 99 +/- %
JANUARY	45,255,858	67,533,920	60,095,950	49%	-11%
FEBRUARY	53,143,400	66,221,238	66,863,911	25%	1%
MARCH	61,782,056	62,677,476	67,714,150	1%	8%
APRIL	52,039,403	57,212,339	64,659,750	10%	13%
MAY	60,849,067	62,657,539	69,815,161	3%	11%
JUNE	52,772,556	55,837,442	61,041,760	6%	9%
JULY	53,879,429	54,519,109	62,621,304	1%	15%
AUGUST	55,623,739	55,040,579	56,695,376	-1%	3%
SEPTEMBER	46,502,192	47,491,611	51,913,251	2%	9%
OCTOBER	47,775,974	54,944,549	56,612,489	15%	3%
NOVEMBER	51,274,693	57,584,681	57,632,468	12%	0%
DECEMBER	45,426,019	57,988,975	53,973,772	28%	-7%
TOTAL	626,324,386	699,709,458	729,639,342	12%	4%

1999 COMPARISON OF LOCATION HANDLES LIVE ILLINOIS RACING AND SIMULCASTS

LIVE PRGMS	AMOUNT WAGERED	ON TRACK	ON TRACK %	INTER TRACK	INTER TRACK %	OFF TRACK	OFF TRACK %
THOROUGHbred MEETINGS							
124 Hawthorne Race Course	320,750,699	60,395,755	18.8%	97,860,986	30.5%	162,493,958	50.7%
96 National Jockey Club(Spts) at Hawthorne	342,180,587	60,385,454	17.6%	102,938,450	30.1%	178,856,683	52.3%
<u>100</u> Ogden-Fairmount	<u>26,361,170</u>	<u>16,450,450</u>	<u>62.4%</u>	<u>2,867,869</u>	<u>10.9%</u>	<u>7,042,851</u>	<u>26.7%</u>
<u>320</u> THOROUGHbred TOTAL	<u>689,292,456</u>	<u>137,231,659</u>	<u>19.9%</u>	<u>203,667,305</u>	<u>29.5%</u>	<u>348,393,492</u>	<u>50.5%</u>
HARNESs MEETINGS							
204 Balmoral Racing Club	230,605,604	26,631,633	11.5%	74,538,879	32.3%	129,435,092	56.1%
77 Maywood Park Trotting Association	85,048,552	15,021,903	17.7%	21,723,188	25.5%	48,303,461	56.8%
38 Egyptian Trotting Assoc. (Maywood)	39,595,957	6,953,103	17.6%	10,109,930	25.5%	22,532,924	56.9%
<u>39</u> Associates Racing Assoc.(Maywood)	<u>42,884,344</u>	<u>7,563,485</u>	<u>17.6%</u>	<u>11,174,569</u>	<u>26.1%</u>	<u>24,146,290</u>	<u>56.3%</u>
154 Maywood Park (All 3 Meets)	167,528,853	29,538,491	17.6%	43,007,687	25.7%	94,982,675	56.7%
5 Du Quoin State Fair	809,998	351,986	43.5%	146,965	18.1%	311,047	38.4%
6 Springfield State Fair	1,444,680	668,662	46.3%	254,395	17.6%	521,623	36.1%
<u>112</u> Ogden-Fairmount	<u>14,167,738</u>	<u>6,262,443</u>	<u>44.2%</u>	<u>2,232,474</u>	<u>15.8%</u>	<u>5,672,821</u>	<u>40.0%</u>
<u>481</u> HARNESs TOTAL	<u>414,556,873</u>	<u>63,453,215</u>	<u>15.3%</u>	<u>120,180,400</u>	<u>29.0%</u>	<u>230,923,258</u>	<u>55.7%</u>
<u>801</u> TOTAL ALL RACING	<u>1,103,849,329</u>	<u>200,684,874</u>	<u>18.2%</u>	<u>323,847,705</u>	<u>29.3%</u>	<u>579,316,750</u>	<u>52.5%</u>

LIVE ILLINOIS RACING ONLY

LIVE PRGMS	AMOUNT WAGERED	ON TRACK	ON TRACK %	INTER TRACK	INTER TRACK %	OFF TRACK	OFF TRACK %
THOROUGHbred MEETINGS							
124 Hawthorne Race Course	97,628,075	32,947,760	33.7%	26,045,845	26.7%	38,634,470	39.6%
96 National Jockey Club(Spts) at Hawthorne	71,690,955	26,266,173	36.6%	17,746,385	24.8%	27,678,397	38.6%
<u>100</u> Ogden-Fairmount	<u>26,203,950</u>	<u>16,318,358</u>	<u>62.3%</u>	<u>2,867,869</u>	<u>10.9%</u>	<u>7,017,723</u>	<u>26.8%</u>
<u>320</u> THOROUGHbred TOTAL	<u>195,522,980</u>	<u>75,532,291</u>	<u>38.6%</u>	<u>46,660,099</u>	<u>23.9%</u>	<u>73,330,590</u>	<u>37.5%</u>
HARNESs MEETINGS							
204 Balmoral Racing Club	102,836,597	19,765,606	19.2%	28,930,709	28.1%	54,140,282	52.6%
77 Maywood Park Trotting Association	29,857,478	8,028,995	26.9%	6,178,440	20.7%	15,650,043	52.4%
38 Egyptian Trotting Assoc. (Maywood)	14,809,673	4,009,756	27.1%	3,035,872	20.5%	7,764,045	52.4%
<u>39</u> Associates Racing Assoc.(Maywood)	<u>14,770,434</u>	<u>4,109,171</u>	<u>27.8%</u>	<u>3,034,423</u>	<u>20.5%</u>	<u>7,626,840</u>	<u>51.6%</u>
154 Maywood Park (All 3 Meets)	59,437,585	16,147,922	27.2%	12,248,735	20.6%	31,040,928	52.2%
5 Du Quoin State Fair	809,998	351,986	43.5%	146,965	18.1%	311,047	38.4%
6 Springfield State Fair	1,444,680	668,662	46.3%	254,395	17.6%	521,623	36.1%
<u>112</u> Ogden-Fairmount	<u>14,158,147</u>	<u>6,256,554</u>	<u>44.2%</u>	<u>2,232,474</u>	<u>15.8%</u>	<u>5,669,119</u>	<u>40.0%</u>
<u>481</u> HARNESs TOTAL	<u>178,687,007</u>	<u>43,190,730</u>	<u>24.2%</u>	<u>43,813,278</u>	<u>24.5%</u>	<u>91,682,999</u>	<u>51.3%</u>
<u>801</u> TOTAL ALL RACING	<u>374,209,987</u>	<u>118,723,021</u>	<u>31.7%</u>	<u>90,473,377</u>	<u>24.2%</u>	<u>165,013,589</u>	<u>44.1%</u>

1999 OUT-OF-STATE SIMULCASTS

SIMUL. PRGMS		AMOUNT WAGERED	ON TRACK	ON TRACK %	INTER TRACK	INTER TRACK %	OFF TRACK	OFF TRACK %
THOROUGHBRED MEETINGS								
1,723	Hawthorne Race Course	223,122,624	27,447,995	12.3%	71,815,141	32.2%	123,859,488	55.5%
1,376	THOROUGHBRED SIM.	211,679,590	26,542,030	12.5%	68,399,670	32.3%	116,737,890	55.1%
318	HARNESS SIM.	10,015,595	720,723	7.2%	2,998,187	29.9%	6,296,685	62.9%
29	QUARTERHORSE SIM.	1,427,439	185,242	13.0%	417,284	29.2%	824,913	57.8%
2,079	National Jockey Club(Spts) at Hawth.	270,489,632	34,119,281	12.6%	85,192,065	31.5%	151,178,286	55.9%
1,593	THOROUGHBRED SIM.	253,158,984	32,868,590	13.0%	79,973,819	31.6%	140,316,575	55.4%
449	HARNESS SIM.	16,122,331	1,154,410	7.2%	4,885,994	30.3%	10,081,927	62.5%
37	QUARTERHORSE SIM.	1,208,317	96,281	8.0%	332,252	27.5%	779,784	64.5%
1	Ogden-Fairmount	157,220	132,092	84.0%	0	0.0%	25,128	16.0%
1	THOROUGHBRED SIM.	157,220	132,092	84.0%	0	0.0%	25,128	16.0%
3,803	THOROUGHBRED TOTAL	493,769,476	61,699,368	12.5%	157,007,206	31.8%	275,062,902	55.7%
2,970	THOROUGHBRED SIM.	464,995,794	59,542,712	12.8%	148,373,489	31.9%	257,079,593	55.3%
767	HARNESS SIM.	26,137,926	1,875,133	7.2%	7,884,181	30.2%	16,378,612	62.7%
66	QUARTERHORSE SIM.	2,635,756	281,523	10.7%	749,536	28.4%	1,604,697	60.9%

SIMUL. PRGMS		AMOUNT WAGERED	ON TRACK	ON TRACK %	INTER TRACK	INTER TRACK %	OFF TRACK	OFF TRACK %
HARNESS MEETINGS								
1,932	Balmoral Racing Club	127,769,007	6,866,027	5.4%	45,608,170	35.7%	75,294,810	58.9%
719	THOROUGHBRED SIM.	48,927,811	1,842,201	3.8%	18,654,295	38.1%	28,431,315	58.1%
1,077	HARNESS SIM.	67,990,095	4,563,284	6.7%	22,963,660	33.8%	40,463,151	59.5%
136	QUARTERHORSE SIM.	10,851,101	460,542	4.2%	3,990,215	36.8%	6,400,344	59.0%
726	Maywood Park Trotting Association	55,191,074	6,992,908	12.7%	15,544,748	28.2%	32,653,418	59.2%
271	THOROUGHBRED SIM.	20,115,721	1,876,088	9.3%	6,515,044	32.4%	11,724,589	58.3%
431	HARNESS SIM.	33,487,483	4,889,058	14.6%	8,592,825	25.7%	20,005,600	59.7%
24	QUARTERHORSE SIM.	1,587,870	227,762	14.3%	436,879	27.5%	923,229	58.1%
322	Egyptian Trotting Assoc. (Maywood)	24,786,284	2,943,347	11.9%	7,074,058	28.5%	14,768,879	59.6%
122	THOROUGHBRED SIM.	11,780,430	1,138,562	9.7%	3,824,894	32.5%	6,816,974	57.9%
182	HARNESS SIM.	11,206,747	1,524,052	13.6%	2,808,795	25.1%	6,873,900	61.3%
18	QUARTERHORSE SIM.	1,799,107	280,733	15.6%	440,369	24.5%	1,078,005	59.9%
371	Associates Racing Assoc.(Maywood)	28,113,910	3,454,314	12.3%	8,140,146	29.0%	16,519,450	58.8%
171	THOROUGHBRED SIM.	14,429,159	1,407,033	9.8%	4,657,524	32.3%	8,364,602	58.0%
187	HARNESS SIM.	12,270,503	1,826,400	14.9%	3,128,164	25.5%	7,315,939	59.6%
13	QUARTERHORSE SIM.	1,414,248	220,881	15.6%	354,458	25.1%	838,909	59.3%
1,419	Maywood Park (All 3 Meets)	108,091,268	13,390,569	12.4%	30,758,952	28.5%	63,941,747	59.2%
564	THOROUGHBRED SIM.	46,325,310	4,421,683	9.5%	14,997,462	32.4%	26,906,165	58.1%
800	HARNESS SIM.	56,964,733	8,239,510	14.5%	14,529,784	25.5%	34,195,439	60.0%
55	QUARTERHORSE SIM.	4,801,225	729,376	15.2%	1,231,706	25.7%	2,840,143	59.2%
1	Ogden-Fairmount	9,591	5,889	61.4%	0	0.0%	3,702	38.6%
1	THOROUGHBRED SIM.	9,591	5,889	0.0%	0	0.0%	3,702	38.6%
3,352	HARNESS TOTAL	235,869,866	20,262,485	8.6%	76,367,122	32.4%	139,240,259	59.0%
1,284	THOROUGHBRED SIM.	95,262,712	6,269,773	6.6%	33,651,757	35.3%	55,341,182	58.1%
1,877	HARNESS SIM.	124,954,828	12,802,794	10.2%	37,493,444	30.0%	74,658,590	59.7%
191	QUARTERHORSE SIM.	15,652,326	1,189,918	7.6%	5,221,921	33.4%	9,240,487	59.0%
7,155	TOTAL ALL RACING	729,639,342	81,961,853	11.2%	233,374,328	32.0%	414,303,161	56.8%
4,254	THOROUGHBRED SIM.	560,258,506	65,812,485	11.7%	182,025,246	32.5%	312,420,775	55.8%
2,644	HARNESS SIM.	151,092,754	14,677,927	9.7%	45,377,625	30.0%	91,037,202	60.3%
257	QUARTERHORSE SIM.	18,288,082	1,471,441	8.0%	5,971,457	32.7%	10,845,184	59.3%

ON TRACK

	THOROUGHGBRED MEETS	HARNESS MEETS	ALL MEETS
Live Programs Raced	320	481	801
Total Live + Dark Days	464	481	945
Live Races Run	3,037	5,186	8,223
Attendance	882,052	546,032	1,428,084

Illinois Handle on Illinois Races	75,532,291	43,190,730	118,723,021
Illinois Handle on Out-of-State Races on Live Days	<u>44,454,999</u>	<u>20,262,485</u>	<u>64,717,484</u>
Combined Illinois Handle on Live Days	119,987,290	63,453,215	183,440,505
Illinois Handle on Out-of-State Races on Dark Days	17,244,369	0	17,244,369
Combined Illinois Handle on Live + Dark Days	137,231,659	63,453,215	200,684,874
Percentage of Total Combined Illinois Handle	68.38%	31.62%	
Ill. Handle on Out-of-State Races on Live + Dark Days	61,699,368	20,262,485	81,961,853

Average Illinois Handle on Illinois Races	236,038	89,794	148,219
Avg. Ill. Handle on Out-of-State Races on Live Days	<u>138,922</u>	<u>42,126</u>	<u>80,796</u>
Average Combined Illinois Handle on Live Days	374,960	131,919	229,014
Avg. Ill. Handle on Out-of-State Races on Dark Days	119,753	N/A	119,753
Avg. Combined Illinois Handle on Live + Dark Days	295,758	131,919	212,365
Avg. Ill. Handle on OutofState Races on Live+Dark Days	132,973	42,126	170,399

Combined Illinois Handle	137,231,659	63,453,215	200,684,874
-Commission (Take Out)	27,298,435	13,175,053	40,473,488
Track Commission	10,595,987	5,409,850	16,005,837
Purses Earned	10,595,987	5,409,850	16,005,837
Out-of-State Simulcast Fee (3%)	1,850,981	607,875	2,458,856
Privilege Tax	4,255,480	1,747,478	6,002,958
Horse Racing Tax Allocation	0	0	0
Public Pool	109,933,224	50,278,162	160,211,386
-Breakage	846,914	394,250	1,241,164
Race Track Improvement Fund	423,457	197,125	620,582
Breakage to General Revenue	423,457	197,125	620,582
-Surcharge	132,968	353,122	486,090
Payout to Public	108,953,342	49,530,790	158,484,132
Privilege Tax	4,255,480	1,747,478	6,002,958
Breakage	846,914	394,250	1,241,164
Horse Racing Tax Allocation	0	0	0
License Fee	36,440	57,470	93,910
License Fee - Daily Handle	2,400	100	2,500
Admission Tax	54,954	19,155	74,109
Uncashed Tickets (1997)*	<u>532,899</u>	<u>309,837</u>	<u>842,736</u>
TOTAL REVENUE TO STATE	5,497,349	2,384,555	7,881,904
AVG. DAILY STATE REVENUE	17,179	4,957	9,840

* Includes uncashed tickets remitted from meets in 1997 that did not operate in 1999

INTERTRACK

THOROUGHBRED MEETS	HARNESS MEETS	ALL MEETS	
1,600	2,416	4,016	Live Programs Raced
N/A	N/A	N/A	Total Live + Dark Days
N/A	N/A	N/A	Live Races Run
508,816	412,724	921,540	Attendance

46,660,099	43,813,278	90,473,377	Illinois Handle on Illinois Races
99,940,379	76,367,122	176,307,501	Illinois Handle on Out-of-State Races on Live Days
146,600,478	120,180,400	266,780,878	Combined Illinois Handle on Live Days
57,066,827	0	57,066,827	Illinois Handle on Out-of-State Races on Dark Days
203,667,305	120,180,400	323,847,705	Combined Illinois Handle on Live + Dark Days
62.89%	37.11%		Percentage of Total Combined Illinois Handle
157,007,206	76,367,122	233,374,328	Ill. Handle on Out-of-State Races on Live + Dark Days

145,813	91,088	112,951	Average Illinois Handle on Illinois Races
312,314	158,767	220,109	Avg. Ill. Handle on Out-of-State Races on Live Days
458,126	249,855	333,060	Average Combined Illinois Handle on Live Days
396,297	N/A	396,297	Avg. Ill. Handle on Out-of-State Races on Dark Days
438,938	249,855	342,696	Avg. Combined Illinois Handle on Live + Dark Days
338,378	158,767	246,957	Avg. Ill. Handle on OutofState Races on Live+Dark Days

203,667,305	120,180,400	323,847,705	Combined Illinois Handle
41,274,151	25,021,480	66,295,631	-Commission (Take Out)
16,230,992	10,116,386	26,347,378	Track Commission
16,230,992	10,116,386	26,347,378	Purses Earned
4,710,216	2,291,014	7,001,230	Out-of-State Simulcast Fee (3%)
4,101,951	2,497,694	6,599,645	Privilege Tax
0	0	0	Horse Racing Tax Allocation
162,393,154	95,158,920	257,552,074	Public Pool
1,035,859	658,304	1,694,163	-Breakage
517,930	329,152	847,082	Race Track Improvement Fund
517,930	329,152	847,082	Breakage to General Revenue
2,426,235	1,427,428	3,853,663	-Surcharge
158,931,060	93,073,188	252,004,248	Payout to Public
4,101,951	2,497,694	6,599,645	Privilege Tax
1,035,859	658,304	1,694,163	Breakage
0	0	0	Horse Racing Tax Allocation
0	0	0	License Fee
0	0	0	License Fee - Daily Handle
29,986	21,258	51,244	Admission Tax
<u>731,729</u>	<u>594,098</u>	<u>1,325,827</u>	Uncashed Tickets (1997)*
5,555,993	3,498,914	9,054,907	TOTAL REVENUE TO STATE
17,362	7,274	11,305	AVG. DAILY STATE REVENUE

* Includes uncashed tickets remitted from meets in 1997 that did not operate in 1999

OFF TRACK

	THOROUGHBRED MEETS	HARNESS MEETS	ALL MEETS
Live Programs Raced	6,378	9,550	15,928
Total Live + Dark Days	N/A	N/A	N/A
Live Races Run	N/A	N/A	N/A
Attendance	N/A	N/A	N/A

Illinois Handle on Illinois Races	73,330,590	91,682,999	165,013,589
Illinois Handle on Out-of-State Races on Live Days	168,190,255	139,240,259	307,430,514
Combined Illinois Handle on Live Days	241,520,845	230,923,258	472,444,103
Illinois Handle on Out-of-State Races on Dark Days	106,872,647	0	106,872,647
Combined Illinois Handle on Live + Dark Days	348,393,492	230,923,258	579,316,750
Percentage of Total Combined Illinois Handle	60.14%	39.86%	
Ill. Handle on Out-of-State Races on Live + Dark Days	275,062,902	139,240,259	414,303,161

Average Illinois Handle on Illinois Races	229,158	190,609	206,009
<u>Avg. Ill. Handle on Out-of-State Races on Live Days</u>	<u>525,595</u>	<u>289,481</u>	<u>383,808</u>
Average Combined Illinois Handle on Live Days	754,753	480,090	589,818
Avg. Ill. Handle on Out-of-State Races on Dark Days	742,171	N/A	742,171
Avg. Combined Illinois Handle on Live + Dark Days	750,848	480,090	613,034
Avg. Ill. Handle on OutofState Races on Live+Dark Days	592,808	289,481	438,416

Combined Illinois Handle	348,393,492	230,923,258	579,316,750
-Commission (Take Out)	70,698,190	48,464,378	119,162,568
Track Commission	29,046,707	22,537,964	51,584,671
Purses Earned	22,990,932	14,559,545	37,550,477
Out-of-State Simulcast Fee (3%)	8,251,887	4,177,208	12,429,095
Privilege Tax	6,924,728	4,880,429	11,805,157
Horse Racing Tax Allocation	3,483,936	2,309,232	5,793,168
Public Pool	277,695,302	182,458,880	460,154,182
-Breakage	1,739,147	1,146,533	2,885,680
Race Track Improvement Fund	869,574	573,267	1,442,840
Breakage to General Revenue	869,574	573,267	1,442,840
-Surcharge	6,766,992	4,470,324	11,237,316
Payout to Public	269,189,163	176,842,023	446,031,186
Privilege Tax	6,924,728	4,880,429	11,805,157
Breakage	1,739,147	1,146,533	2,885,680
Horse Racing Tax Allocation	3,483,936	2,309,232	5,793,168
License Fee	0	0	0
License Fee - Daily Handle	0	0	0
Admission Tax	0	0	0
Uncashed Tickets (1997)*	<u>1,260,544</u>	<u>1,119,810</u>	<u>2,380,354</u>
TOTAL REVENUE TO STATE	12,819,111	8,932,732	21,751,843
AVG. DAILY STATE REVENUE	40,060	18,571	27,156

* Includes uncashed tickets remitted from meets in 1997 that did not operate in 1999

ALL LOCATIONS

THOROUGHBRED MEETS	HARNESS MEETS	ALL MEETS	
8,298	12,447	20,745	Live Programs Raced
464	481	945	Total Live + Dark Days
3,037	5,186	8,223	Live Races Run
1,390,868	958,756	2,349,624	Attendance
52,398,833	39,180,917	91,579,750	Purse Distribution
195,522,980	178,687,007	374,209,987	Illinois Handle on Illinois Races
312,585,633	235,869,866	548,455,499	Illinois Handle on Out-of-State Races on Live Days
508,108,613	414,556,873	922,665,486	Combined Illinois Handle on Live Days
181,183,843	0	181,183,843	Illinois Handle on Out-of-State Races on Dark Days
689,292,456	414,556,873	1,103,849,329	Combined Illinois Handle on Live + Dark Days
62.44%	37.56%		Percentage of Total Combined Illinois Handle
493,769,476	235,869,866	729,639,342	Ill. Handle on Out-of-State Races on Live + Dark Days
279,881,747	236,223,082	516,104,829	Out-of-State Handle (Commingled) on Illinois Programs
787,990,360	650,779,955	1,438,770,315	Total Meet Handle on Live Days
969,174,203	650,779,955	1,619,954,158	Total Meet Handle on Live + Dark Days
611,009	371,491	467,179	Average Illinois Handle on Illinois Races
<u>976,830</u>	<u>490,374</u>	<u>684,713</u>	<u>Avg. Ill. Handle on Out-of-State Races on Live Days</u>
1,587,839	861,865	1,151,892	Average Combined Illinois Handle on Live Days
1,258,221	N/A	1,258,221	Avg. Ill. Handle on Out-of-State Races on Dark Days
1,485,544	861,865	1,168,095	Avg. Combined Illinois Handle on Live + Dark Days
1,064,158	490,374	772,105	Avg. Ill. Handle on OutofState Races on Live+Dark Days
874,630	491,108	644,326	Avg. Out-of-State Handle (Commingled) on Illinois Programs
2,462,470	1,352,973	1,796,218	Average Total Meet Handle on Live Days
2,088,738	1,352,973	1,714,237	Average Total Meet Handle on Live + Dark Days
689,292,456	414,556,873	1,103,849,329	Combined Illinois Handle
139,270,776	86,660,910	225,931,686	-Commission (Take Out)
55,873,686	38,064,200	93,937,886	Track Commission
49,817,911	30,085,781	79,903,692	Purses Earned
14,813,084	7,076,096	21,889,180	Out-of-State Simulcast Fee (3%)
15,282,159	9,125,601	24,407,760	Privilege Tax
3,483,936	2,309,232	5,793,168	Horse Racing Tax Allocation
550,021,680	327,895,963	877,917,643	Public Pool
3,621,920	2,199,087	5,821,007	-Breakage
1,810,960	1,099,544	2,910,504	Race Track Improvement Fund
1,810,960	1,099,544	2,910,504	Breakage to General Revenue
9,326,195	6,250,874	15,577,069	-Surcharge
537,073,565	319,446,002	856,519,567	Payout to Public
15,282,159	9,125,601	24,407,760	Privilege Tax
3,621,920	2,199,087	5,821,007	Breakage
3,483,936	2,309,232	5,793,168	Horse Racing Tax Allocation
36,440	57,470	93,910	License Fee
2,400	100	2,500	License Fee - Daily Handle
84,940	40,413	125,353	Admission Tax
<u>2,525,173</u>	<u>2,023,745</u>	<u>4,548,918</u>	<u>Uncashed Tickets (1997)*</u>
23,872,454	14,816,201	38,688,655	TOTAL REVENUE TO STATE
74,601	30,803	48,300	AVG. DAILY STATE REVENUE

* Includes uncashed tickets remitted from meets in 1997 that did not operate in 1999

**1999 COMPARISON OF WAGERING POOLS
COMBINED LIVE RACING AND SIMULCASTS**

<u>%</u>	<u>THOROUGHBRED MEETS</u>	<u>TOTAL HANDLE</u>	<u>ON TRACK</u>	<u>%</u>	<u>INTER TRACK</u>	<u>%</u>	<u>OFF TRACK</u>	<u>%</u>
Hawthorne Race Course								
36.4%	WIN, PLACE AND SHOW	116,832,307	25,507,928	21.8%	34,413,485	29.5%	56,910,894	48.7%
34.1%	2-HORSE	109,484,751	19,801,628	18.1%	32,960,833	30.1%	56,722,290	51.8%
29.4%	3-HORSE	94,433,641	15,086,199	16.0%	30,486,668	32.3%	48,860,774	51.7%
	TOTAL HANDLE	320,750,699	60,395,755	18.8%	97,860,986	30.5%	162,493,958	50.7%
National Jockey Club (Spts)								
37.6%	WIN, PLACE AND SHOW	128,564,740	25,322,348	19.7%	37,731,605	29.3%	65,510,787	51.0%
34.5%	2-HORSE	117,912,537	20,503,033	17.4%	34,492,803	29.3%	62,916,701	53.4%
28.0%	3-HORSE	95,703,310	14,560,073	15.2%	30,714,042	32.1%	50,429,195	52.7%
	TOTAL HANDLE	342,180,587	60,385,454	17.6%	102,938,450	30.1%	178,856,683	52.3%
Ogden-Fairmount								
41.4%	WIN, PLACE AND SHOW	10,918,172	7,136,425	65.4%	1,164,535	10.7%	2,617,212	24.0%
36.3%	2-HORSE	9,571,591	5,653,851	59.1%	1,079,115	11.3%	2,838,625	29.7%
22.3%	3-HORSE	5,871,407	3,660,174	62.3%	624,219	10.6%	1,587,014	27.0%
	TOTAL HANDLE	26,361,170	16,450,450	62.4%	2,867,869	10.9%	7,042,851	26.7%
THOROUGHBRED TOTAL								
37.2%	WIN, PLACE AND SHOW	256,315,219	57,966,701	22.6%	73,309,625	28.6%	125,038,893	48.8%
34.4%	2-HORSE	236,968,879	45,958,512	19.4%	68,532,751	28.9%	122,477,616	51.7%
28.4%	3-HORSE	196,008,358	33,306,446	17.0%	61,824,929	31.5%	100,876,983	51.5%
	TOTAL HANDLE	689,292,456	137,231,659	19.9%	203,667,305	29.5%	348,393,492	50.5%

<u>%</u>	<u>HARNESS MEETS</u>	<u>TOTAL HANDLE</u>	<u>ON TRACK</u>	<u>%</u>	<u>INTER TRACK</u>	<u>%</u>	<u>OFF TRACK</u>	<u>%</u>
Balmoral Racing Club								
33.8%	WIN, PLACE AND SHOW	77,933,974	10,127,939	13.0%	25,442,902	32.6%	42,363,133	54.4%
32.1%	2-HORSE	74,070,229	7,881,363	10.6%	24,013,229	32.4%	42,175,637	56.9%
34.1%	3-HORSE	78,601,401	8,622,331	11.0%	25,082,748	31.9%	44,896,322	57.1%
	TOTAL HANDLE	230,605,604	26,631,633	11.5%	74,538,879	32.3%	129,435,092	56.1%
Maywood Park Trot. Assoc.								
33.9%	WIN, PLACE AND SHOW	28,817,979	5,330,696	18.5%	7,708,422	26.7%	15,778,861	54.8%
31.9%	2-HORSE	27,164,509	4,530,231	16.7%	6,790,799	25.0%	15,843,479	58.3%
34.2%	3-HORSE	29,066,064	5,160,976	17.8%	7,223,967	24.9%	16,681,121	57.4%
	TOTAL HANDLE	85,048,552	15,021,903	17.7%	21,723,188	25.5%	48,303,461	56.8%
Egyptian Trotting Assoc.								
33.2%	WIN, PLACE AND SHOW	13,140,889	2,492,750	19.0%	3,392,004	25.8%	7,256,135	55.2%
30.9%	2-HORSE	12,247,141	2,038,705	16.6%	3,170,918	25.9%	7,037,518	57.5%
35.9%	3-HORSE	14,207,927	2,421,648	17.0%	3,547,008	25.0%	8,239,271	58.0%
	TOTAL HANDLE	39,595,957	6,953,103	17.6%	10,109,930	25.5%	22,532,924	56.9%
Associates Racing Assoc.								
33.5%	WIN, PLACE AND SHOW	14,350,054	2,761,527	19.2%	3,923,664	27.3%	7,664,863	53.4%
31.9%	2-HORSE	13,696,675	2,273,075	16.6%	3,516,307	25.7%	7,907,293	57.7%
34.6%	3-HORSE	14,837,615	2,528,883	17.0%	3,734,598	25.2%	8,574,134	57.8%
	TOTAL HANDLE	42,884,344	7,563,485	17.6%	11,174,569	26.1%	24,146,290	56.3%
Maywood Park (All 3 Meets)								
33.6%	WIN, PLACE AND SHOW	56,308,922	10,584,973	18.8%	15,024,090	26.7%	30,699,859	54.5%
31.7%	2-HORSE	53,108,325	8,842,011	16.6%	13,478,024	25.4%	30,788,290	58.0%
34.7%	3-HORSE	58,111,606	10,111,507	17.4%	14,505,573	25.0%	33,494,526	57.6%
	TOTAL HANDLE	167,528,853	29,538,491	17.6%	43,007,687	25.7%	94,982,675	56.7%

% HARNESS MEETS (cont'd)		TOTAL HANDLE	ON TRACK	%	INTER TRACK	%	OFF TRACK	%
DuQuoin State Fair								
44.2%	WIN, PLACE AND SHOW	357,838	171,610	48.0%	56,485	15.8%	129,743	36.3%
39.9%	2-HORSE	323,013	127,983	39.6%	65,000	20.1%	130,030	40.3%
15.9%	3-HORSE	129,147	52,393	40.6%	25,480	19.7%	51,274	39.7%
	TOTAL HANDLE	809,998	351,986	43.5%	146,965	18.1%	311,047	38.4%
Springfield State Fair								
44.0%	WIN, PLACE AND SHOW	635,942	295,750	46.5%	108,179	17.0%	232,013	36.5%
38.2%	2-HORSE	551,489	251,592	45.6%	99,936	18.1%	199,961	36.3%
17.8%	3-HORSE	257,249	121,320	47.2%	46,280	18.0%	89,649	34.8%
	TOTAL HANDLE	1,444,680	668,662	46.3%	254,395	17.6%	521,623	36.1%
Ogden-Fairmount								
29.9%	WIN, PLACE AND SHOW	4,232,823	1,770,844	41.8%	745,424	17.6%	1,716,555	40.6%
39.8%	2-HORSE	5,640,781	2,426,171	43.0%	873,238	15.5%	2,341,372	41.5%
30.3%	3-HORSE	4,294,134	2,065,428	48.1%	613,812	14.3%	1,614,894	37.6%
	TOTAL HANDLE	14,167,738	6,262,443	44.2%	2,232,474	15.8%	5,672,821	40.0%
HARNESS TOTAL								
33.6%	WIN, PLACE AND SHOW	139,469,499	22,951,116	16.5%	41,377,080	29.7%	75,141,303	53.9%
32.2%	2-HORSE	133,693,837	19,529,120	14.6%	38,529,427	28.8%	75,635,290	56.6%
34.1%	3-HORSE	141,393,537	20,972,979	14.8%	40,273,893	28.5%	80,146,665	56.7%
	TOTAL HANDLE	414,556,873	63,453,215	15.3%	120,180,400	29.0%	230,923,258	55.7%

ALL RACING TOTAL								
35.9%	WIN, PLACE AND SHOW	395,784,718	80,917,817	20.4%	114,686,705	29.0%	200,180,196	50.6%
33.6%	2-HORSE	370,662,716	65,487,632	17.7%	107,062,178	28.9%	198,112,906	53.4%
30.6%	3-HORSE	337,401,895	54,279,425	16.1%	102,098,822	30.3%	181,023,648	53.7%
	TOTAL HANDLE	1,103,849,329	200,684,874	18.2%	323,847,705	29.3%	579,316,750	52.5%

		TOTAL HANDLE	ON TRACK	%	INTER TRACK	%	OFF TRACK	%
LIVE ILLINOIS RACING								
35.8%	WIN, PLACE AND SHOW	133,794,651	47,324,289	35.4%	30,840,087	23.1%	55,630,275	41.6%
33.6%	2-HORSE	125,910,865	39,253,179	31.2%	30,808,348	24.5%	55,849,338	44.4%
30.6%	3-HORSE	114,504,471	32,145,553	28.1%	28,824,942	25.2%	53,533,976	46.8%
	TOTAL HANDLE	374,209,987	118,723,021	31.7%	90,473,377	24.2%	165,013,589	44.1%

SIMULCAST RACES								
35.9%	WIN, PLACE AND SHOW	261,990,067	33,593,528	12.8%	83,846,618	32.0%	144,549,921	55.2%
33.5%	2-HORSE	244,751,851	26,234,453	10.7%	76,253,830	31.2%	142,263,568	58.1%
30.5%	3-HORSE	222,897,424	22,133,872	9.9%	73,273,880	32.9%	127,489,672	57.2%
	TOTAL HANDLE	729,639,342	81,961,853	11.2%	233,374,328	32.0%	414,303,161	56.8%

AVERAGE TAKEOUT RATES WHEN SIMULCASTING OUT-OF-STATE RACES			
(Based on actual Illinois wagering combinations on out-of-state races)			
	<u>WIN, PLACE, SHOW</u>	<u>2- HORSE</u>	<u>3- HORSE</u>
ILLINOIS THOROUGHBRED MEETS	16.67%	20.63%	23.95%
ILLINOIS HARNESS MEETS	17.17%	21.30%	24.29%
TOTAL ILLINOIS MEETS	16.82%	20.85%	24.07%

ILLINOIS RACING BOARD

1999 OFF TRACK PARLOR HANDLES

	LIVE ILLINOIS HANDLE	SIMULCAST HANDLE	TOTAL HANDLE	AVERAGE DAILY HANDLE
OAKBROOK TERRACE - Hawthorne	23,083,156	56,024,130	79,107,286	217,328
CRESTWOOD - Sportsman's (NJC)	25,192,442	47,309,691	72,502,133	199,182
CHICAGO (Weed St.) - Arlington	16,629,904	54,716,588	71,346,492	196,007
CHICAGO (Corliss) - Balmoral	20,609,332	39,366,519	59,975,851	164,769
CHICAGO (State St.) - Hawthorne	12,896,604	36,620,125	49,516,729	136,035
WAUKEGAN - Arlington	10,603,705	34,052,218	44,655,923	122,681
CHICAGO (W. Jackson) - Maywood	10,730,322	30,299,741	41,030,063	112,720
NORTH AURORA - Maywood	8,670,083	19,978,290	28,648,373	78,704
ROCKFORD - Quad City Downs	7,192,212	17,030,728	24,222,940	66,547
JOLIET - Sportsman's (NJC)	5,825,283	13,371,515	19,196,798	52,738
SPRINGFIELD - Fairmount	3,825,456	8,955,346	12,780,802	35,112
ALTON-BELLE - Fairmount	3,215,022	9,431,181	12,646,203	34,742
BLOOMINGTON - Balmoral	2,787,235	8,820,738	11,607,973	31,890
CHAMPAIGN - Balmoral	2,295,864	7,898,987	10,194,851	28,008
JOLIET EMPRESS - Maywood	3,121,756	6,379,731	9,501,487	26,103
CARBONDALE - Fairmount	1,955,400	5,762,036	7,717,436	21,202
DANVILLE - Balmoral	1,720,107	5,982,482	7,702,589	21,161
GRAYVILLE - Fairmount	1,350,866	5,595,696	6,946,562	19,084
PERU - Sportsman's (NJC)	1,960,632	3,685,222	5,645,854	15,511
EFFINGHAM - Fairmount	1,348,208	3,022,197	4,370,405	12,007
TOTAL	165,013,589	414,303,161	579,316,750	1,587,169

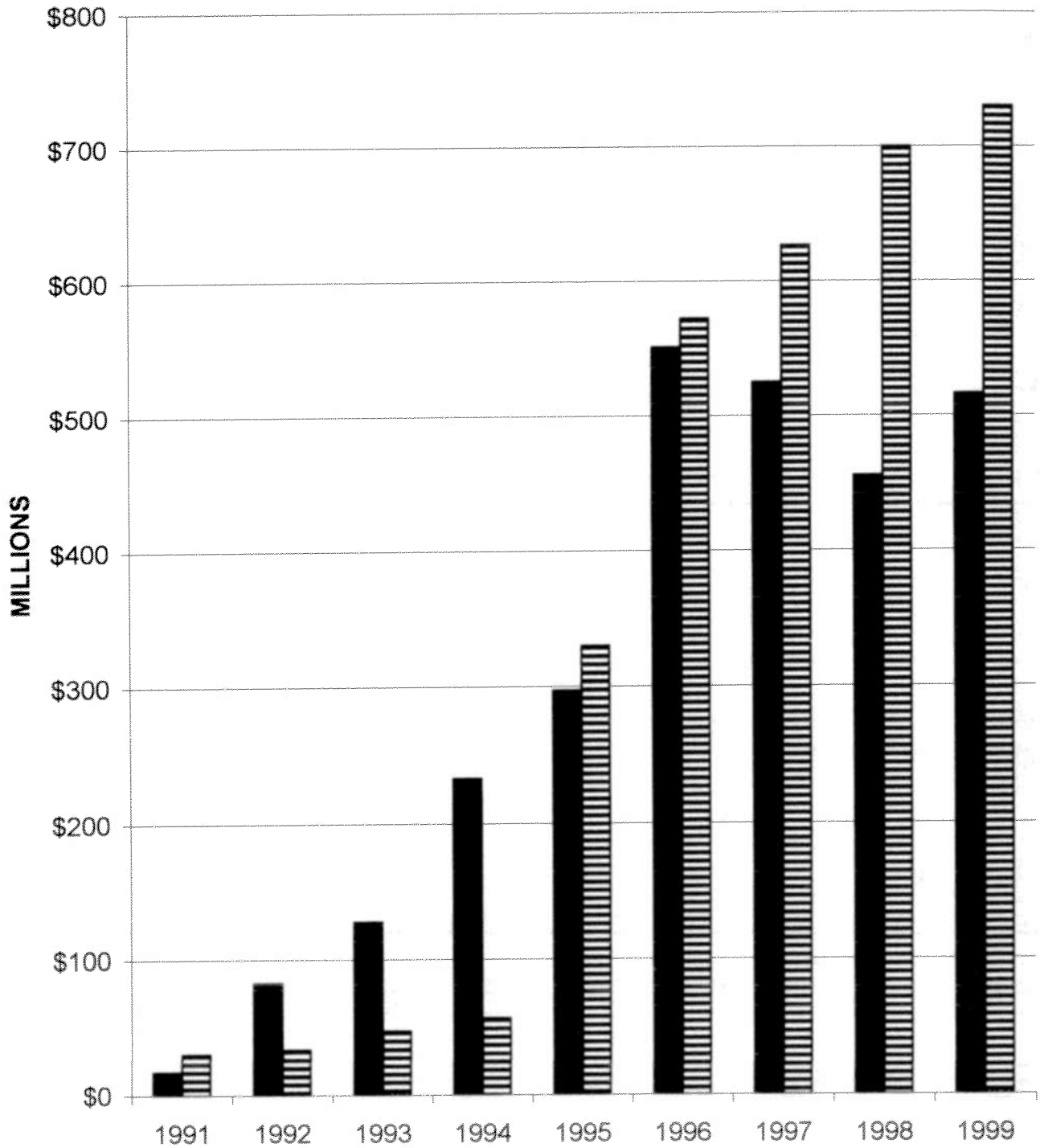
1999 INTERTRACK HANDLES

	LIVE ILLINOIS HANDLE	SIMULCAST HANDLE	TOTAL HANDLE	AVERAGE DAILY HANDLE
ARLINGTON INT'L RACECOURSE	33,883,834	95,471,653	129,355,487	355,372
MAYWOOD PARK	24,036,123	48,081,555	72,117,678	198,125
FAIRMOUNT PARK	10,304,082	48,953,873	59,257,955	162,797
NATIONAL JOCKEY CLUB @ HAWTHORNE	6,049,676	8,870,833	14,920,509	82,434
HAWTHORNE RACE COURSE	5,737,230	8,251,641	13,988,871	76,442
BALMORAL PARK	5,518,246	12,377,077	17,895,323	49,163
QUAD CITY DOWNS	4,944,186	11,367,696	16,311,882	44,813
TOTAL	90,473,377	233,374,328	323,847,705	887,254

**SUMMARY OF SURCHARGES AND REVENUES TO LOCAL GOVERNMENTS
FROM OFF TRACK PARLORS IN 1999**

CITY - Licensee	HANDLE	TOTAL SURCHARGE ON WINNINGS	REVENUE TO CITY (1% OF HANDLE)	REVENUE TO COUNTY (1% OF HANDLE)	OVER/ (UNDER) TO LICENSEE
WAUKEGAN - Arlington December 30, 1988 - Lake	44,655,923	866,832	446,559	446,559	(26,286)
CHICAGO (Weed St.) - Arlington June 4, 1993 - Cook	71,346,492	1,401,265	713,465	713,465	(25,665)
DANVILLE - Balmoral January 24, 1991 - Vermillion	7,702,589	147,542	77,026	77,026	(6,510)
CHICAGO (Corliss) - Balmoral April 18, 1991 - Cook	59,975,851	1,139,721	599,759	599,759	(59,796)
CHAMPAIGN - Balmoral April 29, 1992 - Champaign	10,194,851	192,383	101,949	101,949	(11,514)
BLOOMINGTON - Balmoral May 26, 1992 - McLean	11,607,973	223,047	116,080	116,080	(9,112)
SPRINGFIELD - Fairmount May 5, 1988 - Sangamon	12,780,802	244,379	127,808	127,808	(11,237)
GRAYVILLE - Fairmount August 7, 1989 - White	6,946,562	136,081	69,466	69,466	(2,850)
EFFINGHAM - Fairmount April 16, 1992 - Effingham	4,370,405	85,904	43,704	43,703	(1,503)
CARBONDALE - Fairmount August 20, 1992 - Jackson	7,717,436	149,666	77,174	77,174	(4,683)
ALTON-BELLE - Fairmount August 18, 1994 - Madison	12,646,203	248,298	126,462	126,462	(4,626)
CHICAGO (State St.) - Hawthorne October 24, 1989 - Cook	49,516,729	968,960	495,167	495,167	(21,375)
OAKBROOK TERRACE - Hawthorne September 4, 1992 - DuPage	79,107,286	1,541,331	791,073	791,073	(40,815)
CHICAGO (W. Jackson) - Maywood July 19, 1988 - Cook	41,030,063	802,572	410,301	410,301	(18,029)
NORTH AURORA - Maywood May 31, 1989 - Kane	28,648,373	560,605	286,484	286,484	(12,362)
JOLIET EMPRESS - Maywood January 20, 1994 - Will	9,501,487	183,458	95,015	95,015	(6,572)
JOLIET - Sportsman's (NJC) October 25, 1990 - Will	19,196,798	368,214	191,968	191,968	(15,722)
CRESTWOOD - Sportsman's (NJC) February 17, 1992 - Cook	72,502,133	1,398,635	725,021	725,021	(51,408)
PERU - Sportsman's (NJC) March 5, 1992 - LaSalle	5,645,854	108,650	56,459	56,459	(4,267)
ROCKFORD - Quad City Downs November 18, 1987 - Winnebago	24,222,940	469,773	242,229	242,229	(14,686)
TOTAL	579,316,750	11,237,316	5,793,168	5,793,167	(349,019)

HANDLE 1991-1999 ILLINOIS VS. OUT OF STATE



■ OUT OF STATE ON ILLINOIS RACES ▨ ILLINOIS ON OUT OF STATE RACES

1999 COMMINGLED HANDLE VS. SIMULCAST HANDLE

	COMMINGLED IN	SIMULCAST OUT	
	OUT-OF-STATE HANDLE INTO <u>ILLINOIS POOLS</u>	ILLINOIS HANDLE ON OUT-OF- STATE RACES	"TRADE BALANCE" DIFFERENCE
THOROUGHBRED MEETS			
NATIONAL JOCKEY CLUB (at HAWTHORNE)	89,850,143	270,489,632	(180,639,489)
HAWTHORNE RACE COURSE	174,572,723	223,122,624	(48,549,901)
FAIRMOUNT PARK	15,458,881	157,220	15,301,661
THOROUGHBRED TOTAL	279,881,747	493,769,476	(213,887,729)
	COMMINGLED IN	SIMULCAST OUT	
	OUT-OF-STATE HANDLE INTO <u>ILLINOIS POOLS</u>	ILLINOIS HANDLE ON OUT-OF- STATE RACES	"TRADE BALANCE" DIFFERENCE
HARNESS MEETS			
BALMORAL RACING CLUB	144,023,320	127,769,007	16,254,313
MAYWOOD PARK TROTTING	42,025,409	55,191,074	(13,165,665)
EGYPTIAN TROTTING (MAYWOOD)	23,757,694	24,786,284	(1,028,590)
ASSOCIATES RACING (MAYWOOD)	19,173,035	28,113,910	(8,940,875)
FAIRMOUNT PARK	7,077,389	9,591	7,067,798
SPRINGFIELD FAIR	27,380	0	27,380
DUQUOIN FAIR	138,855	0	138,855
HARNESS TOTAL	236,223,082	235,869,866	353,216
ALL RACING TOTAL	516,104,829	729,639,342	(213,534,513)

1988 - 1999 "TRADE BALANCE" FROM SIMULCASTING INTO AND OUT OF ILLINOIS

	COMMINGLED IN	SIMULCAST OUT	
	OUT-OF-STATE HANDLE INTO <u>ILLINOIS POOLS</u>	ILLINOIS HANDLE ON OUT-OF- STATE RACES	"TRADE BALANCE" DIFFERENCE
1988	not allowed	17,561,687	(17,561,687)
1989	not allowed	21,489,159	(21,489,159)
1990	18,795,400	23,020,321	(4,224,921)
1991	17,255,791	30,321,477	(13,065,686)
1992	82,581,380	34,054,510	48,526,870
1993	127,121,414	47,861,326	79,260,088
1994	233,137,790	56,851,822	176,285,968
1995	297,133,418	329,642,288	(32,508,870)
1996	551,232,436	572,268,505	(21,036,069)
1997	524,992,359	626,324,386	(101,332,027)
1998	455,011,181	699,709,458	(244,698,277)
1999	516,104,829	729,639,342	(213,534,513)

ILLINOIS RACING BOARD

1999 OUT-OF-STATE HANDLE ON ILLINOIS RACES (Commingle)

NATIONAL JOCKEY CLUB THOROUGHBRED
(SPORTSMAN'S AT HAWTHORNE)

<u>TRACK</u>	<u>HANDLE</u>	<u>PROGS</u>	<u>AVERAGE</u>
California	1,232,668	4	308,167
Calder	3,332,905	30	111,097
NYC OTB	713,545	7	101,935
Nevada	6,504,388	96	67,754
Hialeah	3,152,519	47	67,075
Gulfstream	500,483	8	62,560
Fairgrounds	4,103,533	76	53,994
Meadowlands	2,774,409	53	52,347
Philadelphia Park	4,482,267	96	46,690
NYRA	88,114	2	44,057
Nassau	303,979	7	43,426
Laurel	1,061,566	28	37,913
Pimlico	1,601,917	47	34,083
Tampa Bay	1,611,315	52	30,987
Meadows	2,907,126	96	30,283
Lone Star	2,317,646	77	30,099
All Others	53,161,763	6340	8,385
TOTAL	89,850,143	7,066	12,716

HAWTHORNE THOROUGHBRED

<u>TRACK</u>	<u>HANDLE</u>	<u>PROGS</u>	<u>AVERAGE</u>
California	16,179,595	71	227,882
Calder	18,156,362	122	148,823
Los Alamitos	431,937	5	86,387
Bay Meadows	408,679	5	81,736
Nevada	9,472,849	124	76,394
Meadowlands	4,745,102	71	66,832
NYRA	933,228	14	66,659
NYC OTB	121,026	2	60,513
Fairgrounds	6,501,021	124	52,428
Birmingham	6,432,200	124	51,873
Meadows	6,190,137	124	49,920
Laurel	6,127,961	123	49,821
Philadelphia Park	6,007,261	124	48,446
Sport Spectrum	3,160,026	81	39,013
Dakota Hub	4,096,723	124	33,038
Lone Star	3,899,542	123	31,704
All Others	81,709,074	8750	9,338
TOTAL	174,572,723	10,111	17,266

BALMORAL HARNESS

<u>TRACK</u>	<u>HANDLE</u>	<u>PROGS</u>	<u>AVERAGE</u>
Los Alamitos	12,045,878	78	154,434
Cal Expo	3,146,852	44	71,519
NYC OTB	10,272,885	200	51,364
Meadowlands	5,979,458	126	47,456
Philadelphia Park	8,783,274	203	43,267
Nevada	8,628,141	204	42,295
Hazel Park	8,175,897	203	40,275
Penn National	7,974,137	202	39,476
Rosecroft	4,495,005	122	36,844
Nassau	4,472,144	152	29,422
Northville	5,305,711	202	26,266
Meadows	2,992,489	121	24,731
Pompano	2,184,601	118	18,514
Merriville	2,692,187	150	17,948
Beulah	1,507,486	87	17,327
All Others	55,367,175	9273	5,971
TOTAL	144,023,320	11,485	12,540

MAYWOOD HARNESS

<u>TRACK</u>	<u>HANDLE</u>	<u>PROGS</u>	<u>AVERAGE</u>
Cal Expo	4,471,621	48	93,159
Los Alamitos	3,302,721	38	86,914
NYC OTB	7,875,638	153	51,475
Meadowlands	3,714,237	99	37,518
Nevada	5,653,894	154	36,714
Philadelphia Park	4,241,766	154	27,544
Rosecroft	3,854,689	140	27,533
Hazel Park	4,204,422	154	27,301
Penn National	4,106,598	154	26,666
Nassau	3,389,305	153	22,152
Northfield	3,164,018	154	20,546
Northville	2,705,733	153	17,685
Pompano	1,905,947	110	17,327
Beulah	1,361,244	91	14,959
Meadows	1,418,294	103	13,770
All Others	29,586,011	6736	4,392
TOTAL	84,956,138	8,594	9,886

1999 ILLINOIS HANDLE ON OUT-OF-STATE TRACKS

NATIONAL JOCKEY CLUB THOROUGHBRED

(SPORTSMAN'S AT HAWTHORNE)

TRACK	HANDLE	PROGS	AVERAGE
Gulfstream	27,525,468	66	417,053
Churchill	19,325,795	53	364,638
Belmont	12,396,763	37	335,048
Fairgrounds	18,593,902	64	290,530
Keeneland	4,841,549	17	284,797
Aqueduct	21,942,216	91	241,123
Oaklawn	11,692,928	53	220,621
Santa Anita	16,607,621	80	207,595
Ellis Park	342,119	2	171,060
Calder	4,683,455	28	167,266
Hialeah	9,832,382	60	163,873
Pimlico	9,226,600	59	156,383
Lone Star	3,501,875	23	152,255
Hollywood	7,376,549	49	150,542
Tampa Downs	11,643,768	83	140,286
Louisiana Downs	397,449	3	132,483
All Others	90,559,193	1,310	69,129
TOTAL	270,489,632	2,078	130,168

HAWTHORNE THOROUGHBRED

TRACK	HANDLE	PROGS	AVERAGE
Gulfstream	5,333,885	3	1,777,962
Saratoga	13,161,801	37	355,724
Belmont	15,308,514	51	300,167
Churchill	6,732,442	24	280,518
Meadowlands	542,886	2	271,443
Fairgrounds	6,874,375	26	264,399
Keeneland	4,071,002	16	254,438
Aqueduct	10,490,987	46	228,065
Calder	28,887,831	140	206,342
Hollywood	8,363,627	42	199,134
Ellis Park	11,666,823	60	194,447
Louisiana Downs	15,280,952	79	193,430
Santa Anita	6,585,197	36	182,922
Turf Paradise	3,623,798	22	164,718
Monmouth	7,953,415	50	159,068
Delaware	7,861,061	51	154,138
All Others	70,384,028	1,038	67,807
TOTAL	223,122,624	1,723	129,497

BALMORAL HARNESS

TRACK	HANDLE	PROGS	AVERAGE
Meadowlands	22,115,137	99	223,385
Evangeline	5,014,006	41	122,293
Lone Star	2,854,046	24	118,919
Sam Houston	9,575,011	81	118,210
Turfway Park	2,276,378	22	103,472
Los Alamitos	12,877,862	134	96,103
Northfield	6,130,803	65	94,320
Garden State	4,428,549	47	94,224
Del Mar	2,060,201	22	93,646
Cal Expo	3,428,024	44	77,910
Prairie Meadows	2,604,357	34	76,599
Delta Downs	1,874,536	27	69,427
Hoosier	6,535,211	97	67,373
Retama	2,410,698	37	65,154
Meadows	6,270,144	99	63,335
Charlestown	244,615	4	61,154
All Others	37,069,429	1,055	35,137
TOTAL	127,769,007	1,932	66,133

MAYWOOD HARNESS

TRACK	HANDLE	PROGS	AVERAGE
Meadowlands	17,050,570	79	215,830
Sam Houston	4,120,347	23	179,146
Evangeline	5,449,931	41	132,925
Lone Star	4,229,114	32	132,160
Los Alamitos	7,759,734	68	114,114
Turfway Park	4,549,704	40	113,743
Northfield	14,967,308	154	97,190
Del Mar	2,030,437	21	96,687
Garden State	3,976,133	42	94,670
Bay Meadows	1,912,701	22	86,941
Cal Expo	4,252,352	49	86,783
Retama	1,126,083	13	86,622
Penn National	5,348,897	68	78,660
Prairie Meadows	1,658,592	22	75,391
Delta Downs	958,015	13	73,693
Hoosier	4,864,992	67	72,612
All Others	23,836,358	665	35,844
TOTAL	108,091,268	1,419	76,174

1999 MAJOR STAKE RACES

THOROUGHBRED

DATE	National Jockey Club at Hawthorne	PURSE	HORSE	JOCKEY
May 8	Illinois Derby	\$500,000	Vision and Verse	H. Castillo, Jr.
May 15	Sixty Sails Handicap	\$300,000	Crafty Oak	R. Sibille
May 29	National Jockey Club Handicap	\$200,000	Baytown	M. Guidry
April 24	National Jockey Club Oaks	\$150,000	Isle Be Loving You	J. Judice
June 20	Sportsman's Park Breeders' Cup	\$102,650	Apalachee Special	E. Perez
Hawthorne Race Course				
October 9	Hawthorne Gold Cup	\$500,000	Supreme Sound	R. Meier
October 10	Hawthorne Derby	\$250,000	Minor Wisdom	R. Zimmerman
July 24	Robert F. Carey Memorial	\$150,000	Ray's Approval	E. Fires
November 20	Illinois Breeders' Debutante	\$118,200	Lil Bobbie Too	E. Razo, Jr.
November 27	Jim Edgar Futurity	\$116,750	Mister Volare	C. Emigh
Fairmount Park				
September 11	Marluels' Troy Stakes	\$25,800	Lethal	D. Gall
June 5	Bungalow Handicap	\$25,700	Wing's Frisky Gal	J. Bielby
July 24	Tex's Zing Stakes	\$25,700	Byron's Gold	C. Silva
September 6	All Sold Out Stakes	\$25,700	Deposit Express	J. Mendez
July 10	Pete Condellone Handicap	\$25,600	Lac Bonhomme	R. Feliciano
August 7	Slight in the Rear Stakes	\$25,600	Abuckapiece	N. Medina

HARNESS

DATE	Balmoral Park	PURSE	HORSE	DRIVER
September 18	Orange and Blue 2-Year-Old Colt Pace	\$300,000	Ascot Brandy	A. Miller
September 18	Orange and Blue 2-Year-Old Filly Pace	\$269,050	Incredible Tillie	A. Miller
July 31	American National 3-Year-Old Colt Pace	\$238,000	Blissfull Hall	D. Hiteman
August 21	American National Aged Pace	\$200,000	Big Tom	J. Anderson
September 18	Langley Memorial 3-Year-Old Colt Pace	\$178,750	Masterofhisdomain	J. Anderson
Maywood Park				
November 19	Windy City Pace	\$250,000	Looking At Art	E. Ledford
November 5	Abe Lincoln Pace	\$118,000	High On Emotion	P. Wrenn
November 5	Galt Trot	\$100,000	Raffaello Ambrosio	A. Miller
July 2	Maywood Pace	\$100,000	Masterofhisdomain	J. Anderson
October 15	Cardinal Pace	\$90,000	Count Herod	A. Miller
Fairmount Park				
October 2	Spees Boy Stakes	\$16,500	Jonathon Coe	C. Willis
October 30	Miss Fairmount Stakes	\$16,500	Apple Of My Eye	E. Miller
November 6	Saluki Stakes	\$16,500	Fulmar Red	W. Haynes, Jr.
December 4	Wrex Vandecar Memorial	\$15,900	Skipalong Jake	T. Curtin

1999 - 2000 RACING DATES

THOROUGHBRED RACING DATES

	1999	2000
SPORTSMAN'S PARK		
National Jockey Club	95 Live Days, 5 day week February 19 - June 30	54 Live Days, 5 day week March 3 - May 13
ARLINGTON INTERNATIONAL RACECOURSE		
Arlington Int'l Racecourse, Inc.	Did not apply	103 Live Days, 5 day week May 14 - September 30
HAWTHORNE RACE COURSE		
Hawthorne Race Course, Inc.	108 Live Days, 5 day week July 1 - November 28	67 Live Days, 5 day week October 1 - December 31
FAIRMOUNT PARK		
Ogden-Fairmount, Inc.	101 Live Days, 5 day/night week March 30 - September 18	151 Live Days, 3-4 day/night week January 29 - December 31

HARNESS RACING DATES

	1999	2000
BALMORAL PARK		
Balmoral Racing Club, Inc.	206 Live Days, 4 night week January 1 - December 31	208 Live Days, 4 night week January 1 - December 31
MAYWOOD PARK		
	(155 Total Live Days)	(155 Total Live Days)
Maywood Park Trotting Assoc., Inc.	78 Live Days, 3 night week January 1 - June 30	103 Live Days, 3 night week January 1 - August 29
Associates Racing Association, Inc.	39 Live Days, 3 night week July 1 - September 29	52 Live Days, 3 night week August 30 - December 31
Egyptian Trotting Association, Inc.	38 Live Days, 3 night week September 30 - December 30	Did not apply
FAIRMOUNT PARK		
Ogden-Fairmount, Inc.	116 Live Days, 5 day/night week January 1 - March 7, September 25 - December 31	Did not apply

NATIONAL JOCKEY CLUB - HAWTHORNE RACE COURSE
JANUARY 1 - JUNE 30

	ON TRACK AT SPORTSMAN'S	INTER TRACK ON SPORTSMAN'S	OFF TRACK ON SPORTSMAN'S	ALL LOCATIONS ON SPORTSMAN'S
THOROUGHBRED MEET				
Live Programs Raced	96	480	1,918	2,494
Total Live + Dark Days	181	0	0	181
Live Races Run	870	0	0	870
Attendance	264,651	257,981	N/A	522,632
Purse Distribution				19,601,856
Illinois Handle on Illinois Races	26,266,173	17,746,385	27,678,397	71,690,955
Illinois Handle on Out-of-State Races on Live Days	21,121,935	46,710,776	80,258,547	148,091,258
Combined Illinois Handle on Live Days	47,388,108	64,457,161	107,936,944	219,782,213
Illinois Handle on Out-of-State Races on Dark Days	12,997,346	38,481,289	70,919,739	122,398,374
Combined Illinois Handle on Live + Dark Days	60,385,454	102,938,450	178,856,683	342,180,587
Percentage of Total Combined Illinois Handle	17.65%	30.08%	52.27%	
Ill. Handle on Out-of-State Races on Live + Dark Days	34,119,281	85,192,065	151,178,286	270,489,632
Out-of-State Handle (Commingled) on Illinois Programs				89,850,143
Total Meet Handle on Live Days				309,632,356
Total Meet Handle on Live + Dark Days				432,030,730
Average Illinois Handle on Illinois Races	273,606	184,858	288,317	746,781
Avg. Ill. Handle on Out-of-State Races on Live Days	220,020	486,571	836,027	1,542,617
Average Combined Illinois Handle on Live Days	493,626	671,429	1,124,343	2,289,398
Avg. Ill. Handle on Out-of-State Races on Dark Days	152,910	452,721	834,350	1,439,981
Avg. Combined Illinois Handle on Live + Dark Days	333,621	568,721	988,158	1,890,500
Avg. Ill. Handle on OutofState Races on Live+Dark Days	188,504	470,674	835,239	1,494,418
Avg. Out-of-State Handle (Commingled) on Illinois Programs				935,939
Average Total Meet Handle on Live Days				3,225,337
Average Total Meet Handle on Live + Dark Days				2,386,910
Combined Illinois Handle	\$ 60,385,454	102,938,450	178,856,683	342,180,587
-Commission (Take Out)	\$ 12,003,784	20,841,240	36,267,649	69,112,673
Track Commission *	\$ 4,503,299	8,114,322	14,466,498	27,084,119
Purses Earned **	\$ 4,503,299	8,114,322	11,955,912	24,573,533
Out-of-State Simulcast Fee (3%)	\$ 1,023,578	2,555,762	4,535,349	8,114,689
Privilege Tax	\$ 1,973,608	2,056,834	3,521,323	7,551,765
Horse Racing Tax Allocation	\$ 0	0	1,788,567	1,788,567
Public Pool	\$ 48,381,670	82,097,210	142,589,034	273,067,914
-Breakage	\$ 369,289	529,904	893,586	1,792,779
Race Track Improvement Fund	\$ 184,645	264,952	446,793	896,390
Breakage to General Revenue	\$ 184,645	264,952	446,793	896,390
-Surcharge	\$ 0	1,227,797	3,477,951	4,705,748
Payout to Public	\$ 48,012,381	80,339,509	138,217,497	266,569,387
Privilege Tax	\$ 1,973,608	2,056,834	3,521,323	7,551,765
Breakage	\$ 369,289	529,904	893,586	1,792,779
Horse Racing Tax Allocation	\$ 0	0	1,788,567	1,788,567
License Fee	\$ 11,450	0	0	11,450
License Fee - Daily Handle	\$ 1,000	0	0	1,000
Admission Tax	\$ 17,484	15,877	0	33,361
Uncashed Tickets (1997)	\$ 122,971	209,627	364,229	696,826
TOTAL REVENUE TO STATE	\$ 2,495,802	2,812,242	6,567,705	11,875,748
AVG. DAILY STATE REVENUE	\$ 25,998	29,294	68,414	123,706

* Included are commissions earned by intertrack and off-track outlets.

** Included are purses earned for Fairmount Park and race meets affiliated with intertrack outlets.

HAWTHORNE RACE COURSE, INC. - HAWTHORNE RACE COURSE
JULY 1 - DECEMBER 31

	ON TRACK AT HAWTHORNE	INTER TRACK ON HAWTHORNE	OFF TRACK ON HAWTHORNE	ALL LOCATIONS ON HAWTHORNE
THOROUGHBRED MEET				
Live Programs Raced	124	620	2,460	3,204
Total Live + Dark Days	183	0	0	183
Live Races Run	1,162	0	0	1,162
Attendance	353,099	250,835	N/A	603,934
Purse Distribution				26,974,883
Illinois Handle on Illinois Races	32,947,760	26,045,845	38,634,470	97,628,075
Illinois Handle on Out-of-State Races on Live Days	23,200,972	53,229,603	87,906,580	164,337,155
Combined Illinois Handle on Live Days	56,148,732	79,275,448	126,541,050	261,965,230
Illinois Handle on Out-of-State Races on Dark Days	4,247,023	18,585,538	35,952,908	58,785,469
Combined Illinois Handle on Live + Dark Days	60,395,755	97,860,986	162,493,958	320,750,699
Percentage of Total Combined Illinois Handle	18.83%	30.51%	50.66%	
Ill. Handle on Out-of-State Races on Live + Dark Days	27,447,995	71,815,141	123,859,488	223,122,624
Out-of-State Handle (Commingled) on Illinois Programs				174,572,723
Total Meet Handle on Live Days				436,537,953
Total Meet Handle on Live + Dark Days				495,323,422
Average Illinois Handle on Illinois Races	265,708	210,047	311,568	787,323
Avg. Ill. Handle on Out-of-State Races on Live Days	187,105	429,271	708,924	1,325,300
Average Combined Illinois Handle on Live Days	452,812	639,318	1,020,492	2,112,623
Avg. Ill. Handle on Out-of-State Races on Dark Days	71,983	315,009	609,371	996,364
Avg. Combined Illinois Handle on Live + Dark Days	330,031	534,759	887,945	1,752,736
Avg. Ill. Handle on OutofState Races on Live+Dark Days	149,989	392,432	676,828	1,219,249
Avg. Out-of-State Handle (Commingled) on Illinois Programs				1,407,845
Average Total Meet Handle on Live Days				3,520,467
Average Total Meet Handle on Live + Dark Days				2,706,685
Combined Illinois Handle	\$ 60,395,755	97,860,986	162,493,958	320,750,699
-Commission (Take Out)	\$ 12,010,595	19,857,667	33,007,553	64,875,815
Track Commission *	\$ 4,601,848	7,855,237	13,684,437	26,141,522
Purses Earned **	\$ 4,601,848	7,855,237	10,710,386	23,167,471
Out-of-State Simulcast Fee (3%)	\$ 823,440	2,154,454	3,715,785	6,693,679
Privilege Tax	\$ 1,983,459	1,992,739	3,272,005	7,248,203
Horse Racing Tax Allocation	\$ 0	0	1,624,940	1,624,940
Public Pool	\$ 48,385,160	78,003,319	129,486,405	255,874,884
-Breakage	\$ 362,790	487,702	804,940	1,655,432
Race Track Improvement Fund	\$ 181,395	243,851	402,470	827,716
Breakage to General Revenue	\$ 181,395	243,851	402,470	827,716
-Surcharge	\$ 0	1,164,922	3,151,084	4,316,006
Payout to Public	\$ 48,022,370	76,350,695	125,530,381	249,903,446
Privilege Tax	\$ 1,983,459	1,992,739	3,272,005	7,248,203
Breakage	\$ 362,790	487,702	804,940	1,655,432
Horse Racing Tax Allocation	\$ 0	0	1,624,940	1,624,940
License Fee	\$ 12,880	0	0	12,880
License Fee - Daily Handle	\$ 1,400	0	0	1,400
Admission Tax	\$ 20,771	14,109	0	34,880
Uncashed Tickets (1997)	\$ 102,010	165,290	274,457	541,757
TOTAL REVENUE TO STATE	\$ 2,483,310	2,659,840	5,976,342	11,119,492
AVG. DAILY STATE REVENUE	\$ 20,027	21,450	48,196	89,673

* Included are commissions earned by intertrack and off-track outlets.

** Included are purses earned for Fairmount Park and race meets affiliated with intertrack outlets.

OGDEN-FAIRMOUNT, INC. - FAIRMOUNT PARK**MARCH 30 - SEPTEMBER 18**

	ON TRACK AT FAIRMOUNT	INTER TRACK ON FAIRMOUNT	OFF TRACK ON FAIRMOUNT	ALL LOCATIONS ON FAIRMOUNT
THOROUGHBRED MEET				
Live Programs Raced	100	500	2,000	2,600
Total Live + Dark Days	100	0	0	100
Live Races Run	1,005	0	0	1,005
Attendance	264,302	0	N/A	264,302
Purse Distribution				5,822,094
Illinois Handle on Illinois Races	16,318,358	2,867,869	7,017,723	26,203,950
Illinois Handle on Out-of-State Races on Live Days	132,092	0	25,128	157,220
Combined Illinois Handle on Live Days	16,450,450	2,867,869	7,042,851	26,361,170
Illinois Handle on Out-of-State Races on Dark Days	0	0	0	0
Combined Illinois Handle on Live + Dark Days	16,450,450	2,867,869	7,042,851	26,361,170
Percentage of Total Combined Illinois Handle	62.40%	10.88%	26.72%	
Ill. Handle on Out-of-State Races on Live + Dark Days	132,092	0	25,128	157,220
Out-of-State Handle (Commingled) on Illinois Programs				15,458,881
Total Meet Handle on Live Days				41,820,051
Total Meet Handle on Live + Dark Days				41,820,051
Average Illinois Handle on Illinois Races	163,184	28,679	70,177	262,040
Avg. Ill. Handle on Out-of-State Races on Live Days	1,321	0	251	1,572
Average Combined Illinois Handle on Live Days	164,505	28,679	70,429	263,612
Avg. Ill. Handle on Out-of-State Races on Dark Days	N/A	N/A	N/A	N/A
Avg. Combined Illinois Handle on Live + Dark Days	164,505	28,679	70,429	263,612
Avg. Ill. Handle on OutofState Races on Live+Dark Days	1,321	0	251	1,572
Avg. Out-of-State Handle (Commingled) on Illinois Programs				154,589
Average Total Meet Handle on Live Days				418,201
Average Total Meet Handle on Live + Dark Days				418,201
Combined Illinois Handle	\$ 16,450,450	2,867,869	7,042,851	26,361,170
-Commission (Take Out)	\$ 3,284,056	575,244	1,422,989	5,282,289
Track Commission *	\$ 1,490,840	261,433	895,772	2,648,045
Purses Earned **	\$ 1,490,840	261,433	324,634	2,076,907
Out-of-State Simulcast Fee (3%)	\$ 3,963	0	754	4,717
Privilege Tax	\$ 298,413	52,378	131,400	482,191
Horse Racing Tax Allocation	\$ 0	0	70,429	70,429
Public Pool	\$ 13,166,394	2,292,625	5,619,862	21,078,881
-Breakage	\$ 114,835	18,253	40,621	173,709
Race Track Improvement Fund	\$ 57,418	9,127	20,311	86,855
Breakage to General Revenue	\$ 57,418	9,127	20,311	86,855
-Surcharge	\$ 132,968	33,516	137,957	304,441
Payout to Public	\$ 12,918,591	2,240,856	5,441,284	20,600,731
Privilege Tax	\$ 298,413	52,378	131,400	482,191
Breakage	\$ 114,835	18,253	40,621	173,709
Horse Racing Tax Allocation	\$ 0	0	70,429	70,429
License Fee	\$ 12,110	0	0	12,110
License Fee - Daily Handle	\$ 0	0	0	0
Admission Tax	\$ 16,699	0	0	16,699
Uncashed Tickets (1997)	\$ 76,180	13,281	32,615	122,076
TOTAL REVENUE TO STATE	\$ 518,237	83,912	275,065	877,214
AVG. DAILY STATE REVENUE	\$ 5,182	839	2,751	8,772

* Included are commissions earned by intertrack and off-track outlets.

** Included are purses earned for Fairmount Park and race meets affiliated with intertrack outlets.

BALMORAL RACING CLUB, INC. - BALMORAL PARK
JANUARY 1 - DECEMBER 31

	ON TRACK AT BALMORAL	INTER TRACK ON BALMORAL	OFF TRACK ON BALMORAL	ALL LOCATIONS ON BALMORAL
HARNESS MEET				
Live Programs Raced	204	1,020	4,057	5,281
Total Live + Dark Days	204	0	0	204
Live Races Run	2,269	0	0	2,269
Attendance	236,942	265,508	N/A	502,450
Purse Distribution				20,698,670
Illinois Handle on Illinois Races	19,765,606	28,930,709	54,140,282	102,836,597
Illinois Handle on Out-of-State Races on Live Days	6,866,027	45,608,170	75,294,810	127,769,007
Combined Illinois Handle on Live Days	26,631,633	74,538,879	129,435,092	230,605,604
Illinois Handle on Out-of-State Races on Dark Days				
Combined Illinois Handle on Live + Dark Days	26,631,633	74,538,879	129,435,092	230,605,604
Percentage of Total Combined Illinois Handle	11.55%	32.32%	56.13%	
Ill. Handle on Out-of-State Races on Live + Dark Days	6,866,027	45,608,170	75,294,810	127,769,007
Out-of-State Handle (Commingled) on Illinois Programs				144,023,320
Total Meet Handle on Live Days				374,628,924
Total Meet Handle on Live + Dark Days				374,628,924
Average Illinois Handle on Illinois Races	96,890	141,817	265,394	504,101
Avg. Ill. Handle on Out-of-State Races on Live Days	33,657	223,569	369,092	626,319
Average Combined Illinois Handle on Live Days	130,547	365,387	634,486	1,130,420
Avg. Ill. Handle on Out-of-State Races on Dark Days	N/A	N/A	N/A	N/A
Avg. Combined Illinois Handle on Live + Dark Days	130,547	365,387	634,486	1,130,420
Avg. Ill. Handle on OutofState Races on Live+Dark Days	33,657	223,569	369,092	626,319
Avg. Out-of-State Handle (Commingled) on Illinois Programs				705,997
Average Total Meet Handle on Live Days				1,836,416
Average Total Meet Handle on Live + Dark Days				1,836,416
Combined Illinois Handle	\$ 26,631,633	74,538,879	129,435,092	230,605,604
-Commission (Take Out)	\$ 5,503,779	15,548,109	27,176,430	48,228,318
Track Commission *	\$ 2,377,689	6,313,634	12,792,317	21,483,640
Purses Earned **	\$ 2,377,689	6,313,634	8,097,695	16,789,018
Out-of-State Simulcast Fee (3%)	\$ 205,981	1,368,245	2,258,844	3,833,070
Privilege Tax	\$ 542,420	1,552,596	2,733,223	4,828,239
Horse Racing Tax Allocation	\$ 0	0	1,294,351	1,294,351
Public Pool	\$ 21,127,854	58,990,770	102,258,662	182,377,286
-Breakage	\$ 158,483	396,238	622,481	1,177,202
Race Track Improvement Fund	\$ 79,242	198,119	311,241	588,601
Breakage to General Revenue	\$ 79,242	198,119	311,241	588,601
-Surcharge	\$ 162,699	882,194	2,501,764	3,546,657
Payout to Public	\$ 20,806,672	57,712,338	99,134,417	177,653,427
Privilege Tax	\$ 542,420	1,552,596	2,733,223	4,828,239
Breakage	\$ 158,483	396,238	622,481	1,177,202
Horse Racing Tax Allocation	\$ 0	0	1,294,351	1,294,351
License Fee	\$ 23,660	0	0	23,660
License Fee - Daily Handle	\$ 100	0	0	100
Admission Tax	\$ 1,064	14,319	0	15,383
Uncashed Tickets (1997)	\$ 88,853	248,688	431,841	769,382
TOTAL REVENUE TO STATE	\$ 814,580	2,211,841	5,081,896	8,108,317
AVG. DAILY STATE REVENUE	\$ 3,993	10,842	24,911	39,747

* Included are commissions earned by intertrack and off-track outlets.

** Included are purses earned for Fairmount Park and race meets affiliated with intertrack outlets.

MAYWOOD PARK TROTTING ASSOCIATION, INC. - MAYWOOD PARK
JANUARY 1 - JUNE 30

	ON TRACK AT MAYWOOD	INTER TRACK ON MAYWOOD	OFF TRACK ON MAYWOOD	ALL LOCATIONS ON MAYWOOD
HARNESS MEET				
Live Programs Raced	77	385	1,539	2,001
Total Live + Dark Days	77	0	0	77
Live Races Run	817	0	0	817
Attendance	85,611	68,033	N/A	153,644
Purse Distribution				5,427,100
Illinois Handle on Illinois Races	8,028,995	6,178,440	15,650,043	29,857,478
Illinois Handle on Out-of-State Races on Live Days	<u>6,992,908</u>	<u>15,544,748</u>	<u>32,653,418</u>	<u>55,191,074</u>
Combined Illinois Handle on Live Days	15,021,903	21,723,188	48,303,461	85,048,552
Illinois Handle on Out-of-State Races on Dark Days				
Combined Illinois Handle on Live + Dark Days	15,021,903	21,723,188	48,303,461	85,048,552
Percentage of Total Combined Illinois Handle	17.66%	25.54%	56.80%	
Ill. Handle on Out-of-State Races on Live + Dark Days	6,992,908	15,544,748	32,653,418	55,191,074
Out-of-State Handle (Commingled) on Illinois Programs				42,025,409
Total Meet Handle on Live Days				127,073,961
Total Meet Handle on Live + Dark Days				127,073,961
Average Illinois Handle on Illinois Races	104,273	80,239	203,247	387,759
Avg. Ill. Handle on Out-of-State Races on Live Days	<u>90,817</u>	<u>201,880</u>	<u>424,070</u>	<u>716,767</u>
Average Combined Illinois Handle on Live Days	195,090	282,119	627,318	1,104,527
Avg. Ill. Handle on Out-of-State Races on Dark Days	N/A	N/A	N/A	N/A
Avg. Combined Illinois Handle on Live + Dark Days	195,090	282,119	627,318	1,104,527
Avg. Ill. Handle on OutofState Races on Live+Dark Days	90,817	201,880	424,070	716,767
Avg. Out-of-State Handle (Commingled) on Illinois Programs				545,785
Average Total Meet Handle on Live Days				1,650,311
Average Total Meet Handle on Live + Dark Days				1,650,311
Combined Illinois Handle	\$ 15,021,903	21,723,188	48,303,461	85,048,552
-Commission (Take Out)	\$ 3,140,350	4,517,605	10,158,828	17,816,783
Track Commission *	\$ 1,196,430	1,801,243	4,582,443	7,580,116
Purses Earned **	\$ 1,196,430	1,801,243	3,094,803	6,092,476
Out-of-State Simulcast Fee (3%)	\$ 209,787	466,342	979,603	1,655,732
Privilege Tax	\$ 537,703	448,777	1,018,944	2,005,424
Horse Racing Tax Allocation	\$ 0	0	483,035	483,035
Public Pool	\$ 11,881,553	17,205,583	38,144,633	67,231,769
-Breakage	\$ 94,143	125,136	248,234	467,513
Race Track Improvement Fund	\$ 47,072	62,568	124,117	233,757
Breakage to General Revenue	\$ 47,072	62,568	124,117	233,757
-Surcharge	\$ 66,247	261,925	941,661	1,269,833
Payout to Public	\$ 11,721,163	16,818,522	36,954,738	65,494,423
Privilege Tax	\$ 537,703	448,777	1,018,944	2,005,424
Breakage	\$ 94,143	125,136	248,234	467,513
Horse Racing Tax Allocation	\$ 0	0	483,035	483,035
License Fee	\$ 9,580	0	0	9,580
License Fee - Daily Handle	\$ 0	0	0	0
Admission Tax	\$ 4,592	3,603	0	8,195
Uncashed Tickets (1997)	\$ 21,665	31,330	69,664	122,659
TOTAL REVENUE TO STATE	\$ 667,683	608,846	1,819,877	3,096,406
AVG. DAILY STATE REVENUE	\$ 8,671	7,907	23,635	40,213

* Included are commissions earned by intertrack and off-track outlets.

** Included are purses earned for Fairmount Park and race meets affiliated with intertrack outlets.

ASSOCIATES RACING ASSOCIATION, INC. - MAYWOOD PARK
JULY 1 - SEPTEMBER 29

	ON TRACK AT MAYWOOD	INTER TRACK ON MAYWOOD	OFF TRACK ON MAYWOOD	ALL LOCATIONS ON MAYWOOD
HARNESS MEET				
Live Programs Raced	39	195	780	1,014
Total Live + Dark Days	39	0	0	39
Live Races Run	416	0	0	416
Attendance	47,614	40,742	N/A	88,356
Purse Distribution				3,282,745
Illinois Handle on Illinois Races	4,109,171	3,034,423	7,626,840	14,770,434
Illinois Handle on Out-of-State Races on Live Days	3,454,314	8,140,146	16,519,450	28,113,910
Combined Illinois Handle on Live Days	7,563,485	11,174,569	24,146,290	42,884,344
Illinois Handle on Out-of-State Races on Dark Days				
Combined Illinois Handle on Live + Dark Days	7,563,485	11,174,569	24,146,290	42,884,344
Percentage of Total Combined Illinois Handle	17.64%	26.06%	56.31%	
Ill. Handle on Out-of-State Races on Live + Dark Days	3,454,314	8,140,146	16,519,450	28,113,910
Out-of-State Handle (Commingle) on Illinois Programs				19,173,035
Total Meet Handle on Live Days				62,057,379
Total Meet Handle on Live + Dark Days				62,057,379
Average Illinois Handle on Illinois Races	105,363	77,806	195,560	378,729
Avg. Ill. Handle on Out-of-State Races on Live Days	88,572	208,722	423,576	720,869
Average Combined Illinois Handle on Live Days	193,936	286,527	619,136	1,099,599
Avg. Ill. Handle on Out-of-State Races on Dark Days	N/A	N/A	N/A	N/A
Avg. Combined Illinois Handle on Live + Dark Days	193,936	286,527	619,136	1,099,599
Avg. Ill. Handle on Out-of-State Races on Live+Dark Days	88,572	208,722	423,576	720,869
Avg. Out-of-State Handle (Commingle) on Illinois Programs				491,616
Average Total Meet Handle on Live Days				1,591,215
Average Total Meet Handle on Live + Dark Days				1,591,215
Combined Illinois Handle	\$ 7,563,485	11,174,569	24,146,290	42,884,344
-Commission (Take Out)	\$ 1,564,555	2,302,775	5,038,977	8,906,307
Track Commission *	\$ 596,365	913,540	2,204,334	3,714,239
Purses Earned **	\$ 596,365	913,540	1,582,446	3,092,351
Out-of-State Simulcast Fee (3%)	\$ 103,629	244,204	495,584	843,417
Privilege Tax	\$ 268,196	231,491	515,150	1,014,837
Horse Racing Tax Allocation	\$ 0	0	241,463	241,463
Public Pool	\$ 5,998,930	8,871,794	19,107,314	33,978,037
-Breakage	\$ 49,289	63,800	121,821	234,910
Race Track Improvement Fund	\$ 24,645	31,900	60,911	117,455
Breakage to General Revenue	\$ 24,645	31,900	60,911	117,455
-Surcharge	\$ 33,227	132,371	470,891	636,489
Payout to Public	\$ 5,916,414	8,675,623	18,514,602	33,106,638
Privilege Tax	\$ 268,196	231,491	515,150	1,014,837
Breakage	\$ 49,289	63,800	121,821	234,910
Horse Racing Tax Allocation	\$ 0	0	241,463	241,463
License Fee	\$ 5,290	0	0	5,290
License Fee - Daily Handle	\$ 0	0	0	0
Admission Tax	\$ 2,778	1,821	0	4,599
Uncashed Tickets (1997)	\$ 10,481	15,485	33,461	59,428
TOTAL REVENUE TO STATE	\$ 336,034	312,597	911,895	1,560,527
AVG. DAILY STATE REVENUE	\$ 8,616	8,015	23,382	40,014

* Included are commissions earned by intertrack and off-track outlets.

** Included are purses earned for Fairmount Park and race meets affiliated with intertrack outlets.

EGYPTIAN TROTTING ASSOCIATION, INC. - MAYWOOD PARK
SEPTEMBER 30 - DECEMBER 30

	ON TRACK AT MAYWOOD	INTER TRACK ON MAYWOOD	OFF TRACK ON MAYWOOD	ALL LOCATIONS ON MAYWOOD
HARNESS MEET				
Live Programs Raced	38	190	744	972
Total Live + Dark Days	38	0	0	38
Live Races Run	404	0	0	404
Attendance	45,296	38,441	N/A	83,737
Purse Distribution				3,830,200
Illinois Handle on Illinois Races	4,009,756	3,035,872	7,764,045	14,809,673
Illinois Handle on Out-of-State Races on Live Days	2,943,347	7,074,058	14,768,879	24,786,284
Combined Illinois Handle on Live Days	6,953,103	10,109,930	22,532,924	39,595,957
Illinois Handle on Out-of-State Races on Dark Days				
Combined Illinois Handle on Live + Dark Days	6,953,103	10,109,930	22,532,924	39,595,957
Percentage of Total Combined Illinois Handle	17.56%	25.53%	56.91%	
Ill. Handle on Out-of-State Races on Live + Dark Days	2,943,347	7,074,058	14,768,879	24,786,284
Out-of-State Handle (Commingled) on Illinois Programs				23,757,694
Total Meet Handle on Live Days				63,353,651
Total Meet Handle on Live + Dark Days				63,353,651
Average Illinois Handle on Illinois Races	105,520	79,891	204,317	389,728
Avg. Ill. Handle on Out-of-State Races on Live Days	77,457	186,159	388,655	652,271
Average Combined Illinois Handle on Live Days	182,976	266,051	592,972	1,041,999
Avg. Ill. Handle on Out-of-State Races on Dark Days	N/A	N/A	N/A	N/A
Avg. Combined Illinois Handle on Live + Dark Days	182,976	266,051	592,972	1,041,999
Avg. Ill. Handle on OutofState Races on Live+Dark Days	77,457	186,159	388,655	652,271
Avg. Out-of-State Handle (Commingled) on Illinois Programs				625,202
Average Total Meet Handle on Live Days				1,667,201
Average Total Meet Handle on Live + Dark Days				1,667,201
Combined Illinois Handle	\$ 6,953,103	10,109,930	22,532,924	39,595,957
-Commission (Take Out)	\$ 1,450,909	2,114,057	4,750,254	8,315,221
Track Commission *	\$ 556,652	844,136	2,115,573	3,516,361
Purses Earned **	\$ 556,652	844,136	1,482,169	2,882,957
Out-of-State Simulcast Fee (3%)	\$ 88,300	212,222	443,066	743,589
Privilege Tax	\$ 249,305	213,563	484,117	946,985
Horse Racing Tax Allocation	\$ 0	0	225,329	225,329
Public Pool	\$ 5,502,194	7,995,873	17,782,670	31,280,736
-Breakage	\$ 45,184	55,222	114,603	215,009
Race Track Improvement Fund	\$ 22,592	27,611	57,302	107,505
Breakage to General Revenue	\$ 22,592	27,611	57,302	107,505
-Surcharge	\$ 32,874	119,571	431,446	583,891
Payout to Public	\$ 5,424,136	7,821,080	17,236,621	30,481,836
Privilege Tax	\$ 249,305	213,563	484,117	946,985
Breakage	\$ 45,184	55,222	114,603	215,009
Horse Racing Tax Allocation	\$ 0	0	225,329	225,329
License Fee	\$ 5,180	0	0	5,180
License Fee - Daily Handle	\$ 0	0	0	0
Admission Tax	\$ 2,290	1,515	0	3,805
Uncashed Tickets (1997)	\$ 9,032	13,133	29,270	51,434
TOTAL REVENUE TO STATE	\$ 310,991	283,433	853,319	1,447,742
AVG. DAILY STATE REVENUE	\$ 8,184	7,459	22,456	38,098

* Included are commissions earned by intertrack and off-track outlets.

** Included are purses earned for Fairmount Park and race meets affiliated with intertrack outlets.

**1999 MAYWOOD PARK HARNESS COMBINED
JANUARY 1 - DECEMBER 31**

	ON TRACK AT MAYWOOD	INTER TRACK ON MAYWOOD	OFF TRACK ON MAYWOOD	ALL LOCATIONS ON MAYWOOD
HARNESS MEET				
Live Programs Raced	154	770	3,063	3,987
Total Live + Dark Days	154	0	0	154
Live Races Run	1,637	0	0	1,637
Attendance	178,521	147,216	N/A	325,737
Purse Distribution				12,540,045
Illinois Handle on Illinois Races	16,147,922	12,248,735	31,040,928	59,437,585
Illinois Handle on Out-of-State Races on Live Days	13,390,569	30,758,952	63,941,747	108,091,268
Combined Illinois Handle on Live Days	29,538,491	43,007,687	94,982,675	167,528,853
Illinois Handle on Out-of-State Races on Dark Days	0	0	0	0
Combined Illinois Handle on Live + Dark Days	29,538,491	43,007,687	94,982,675	167,528,853
Percentage of Total Combined Illinois Handle	17.63%	25.67%	56.70%	
Ill. Handle on Out-of-State Races on Live + Dark Days	13,390,569	30,758,952	63,941,747	108,091,268
Out-of-State Handle (Commingled) on Illinois Programs				84,956,138
Total Meet Handle on Live Days				252,484,991
Total Meet Handle on Live + Dark Days				252,484,991
Average Illinois Handle on Illinois Races	104,857	79,537	201,564	385,958
Avg. Ill. Handle on Out-of-State Races on Live Days	86,952	199,733	415,206	701,891
Average Combined Illinois Handle on Live Days	191,808	279,271	616,771	1,087,850
Avg. Ill. Handle on Out-of-State Races on Dark Days	N/A	N/A	N/A	N/A
Avg. Combined Illinois Handle on Live + Dark Days	191,808	279,271	616,771	1,087,850
Avg. Ill. Handle on OutofState Races on Live+Dark Days	86,952	199,733	415,206	701,891
Avg. Out-of-State Handle (Commingled) on Illinois Programs				551,663
Average Total Meet Handle on Live Days				1,639,513
Average Total Meet Handle on Live + Dark Days				1,639,513
Combined Illinois Handle	\$ 29,538,491	43,007,687	94,982,675	167,528,853
-Commission (Take Out)	\$ 6,155,815	8,934,438	19,948,058	35,038,311
Track Commission *	\$ 2,349,447	3,558,919	8,902,350	14,810,716
Purses Earned **	\$ 2,349,447	3,558,919	6,159,418	12,067,784
Out-of-State Simulcast Fee (3%)	\$ 401,717	922,769	1,918,252	3,242,738
Privilege Tax	\$ 1,055,204	893,831	2,018,211	3,967,246
Horse Racing Tax Allocation	\$ 0	0	949,827	949,827
Public Pool	\$ 23,382,676	34,073,249	75,034,617	132,490,542
-Breakage	\$ 188,616	244,158	484,658	917,432
Race Track Improvement Fund	\$ 94,308	122,079	242,329	458,716
Breakage to General Revenue	\$ 94,308	122,079	242,329	458,716
-Surcharge	\$ 132,348	513,867	1,843,998	2,490,213
Payout to Public	\$ 23,061,712	33,315,224	72,705,961	129,082,897
Privilege Tax	\$ 1,055,204	893,831	2,018,211	3,967,246
Breakage	\$ 188,616	244,158	484,658	917,432
Horse Racing Tax Allocation	\$ 0	0	949,827	949,827
License Fee	\$ 20,050	0	0	20,050
License Fee - Daily Handle	\$ 0	0	0	0
Admission Tax	\$ 9,660	6,939	0	16,599
Uncashed Tickets (1997)	\$ 41,178	59,948	132,395	233,521
TOTAL REVENUE TO STATE	\$ 1,314,708	1,204,876	3,585,091	6,104,675
AVG. DAILY STATE REVENUE	\$ 8,537	7,824	23,280	39,641

* Included are commissions earned by intertrack and off-track outlets.

** Included are purses earned for Fairmount Park and race meets affiliated with intertrack outlets.

OGDEN-FAIRMOUNT, INC. - FAIRMOUNT PARK
JANUARY 1 - MARCH 7, SEPTEMBER 25 - DECEMBER 31

	ON TRACK AT FAIRMOUNT	INTER TRACK ON FAIRMOUNT	OFF TRACK ON FAIRMOUNT	ALL LOCATIONS ON FAIRMOUNT
HARNESS MEET				
Live Programs Raced	112	560	2,210	2,882
Total Live + Dark Days	112	0	0	112
Live Races Run	1,128	0	0	1,128
Attendance	130,569	0	N/A	130,569
Purse Distribution				3,226,502
Illinois Handle on Illinois Races	6,256,554	2,232,474	5,669,119	14,158,147
Illinois Handle on Out-of-State Races on Live Days	5,889	0	3,702	9,591
Combined Illinois Handle on Live Days	6,262,443	2,232,474	5,672,821	14,167,738
Illinois Handle on Out-of-State Races on Dark Days	0	0	0	0
Combined Illinois Handle on Live + Dark Days	6,262,443	2,232,474	5,672,821	14,167,738
Percentage of Total Combined Illinois Handle	44.20%	15.76%	40.04%	
Ill. Handle on Out-of-State Races on Live + Dark Days	5,889	0	3,702	9,591
Out-of-State Handle (Commingled) on Illinois Programs				7,077,389
Total Meet Handle on Live Days				21,245,127
Total Meet Handle on Live + Dark Days				21,245,127
Average Illinois Handle on Illinois Races	55,862	19,933	50,617	126,412
Avg. Ill. Handle on Out-of-State Races on Live Days	53	0	33	86
Average Combined Illinois Handle on Live Days	55,915	19,933	50,650	126,498
Avg. Ill. Handle on Out-of-State Races on Dark Days	N/A	N/A	N/A	N/A
Avg. Combined Illinois Handle on Live + Dark Days	55,915	19,933	50,650	126,498
Avg. Ill. Handle on OutofState Races on Live+Dark Days	53	0	33	86
Avg. Out-of-State Handle (Commingled) on Illinois Programs				63,191
Average Total Meet Handle on Live Days				189,689
Average Total Meet Handle on Live + Dark Days				189,689
Combined Illinois Handle	\$ 6,262,443	2,232,474	5,672,821	14,167,738
-Commission (Take Out)	\$ 1,314,768	459,188	1,175,511	2,949,467
Track Commission *	\$ 591,067	207,483	742,647	1,541,197
Purses Earned **	\$ 591,067	207,483	261,356	1,059,906
Out-of-State Simulcast Fee (3%)	\$ 177	0	111	288
Privilege Tax	\$ 132,457	44,222	114,669	291,348
Horse Racing Tax Allocation	\$ 0	0	56,728	56,728
Public Pool	\$ 4,947,675	1,773,236	4,497,310	11,218,271
-Breakage	\$ 37,499	14,394	33,283	85,176
Race Track Improvement Fund	\$ 18,750	7,197	16,642	42,588
Breakage to General Revenue	\$ 18,750	7,197	16,642	42,588
-Surcharge	\$ 50,116	26,687	110,753	187,556
Payout to Public	\$ 4,860,060	1,732,205	4,353,274	10,945,539
Privilege Tax	\$ 132,457	44,222	114,669	291,348
Breakage	\$ 37,499	14,394	33,283	85,176
Horse Racing Tax Allocation	\$ 0	0	56,728	56,728
License Fee	\$ 13,760	0	0	13,760
License Fee - Daily Handle	\$ 0	0	0	0
Admission Tax	\$ 8,431	0	0	8,431
Uncashed Tickets (1997)	\$ 31,764	11,323	28,773	71,861
TOTAL REVENUE TO STATE	\$ 223,911	69,939	233,453	527,304
AVG. DAILY STATE REVENUE	\$ 1,999	624	2,084	4,708

* Included are commissions earned by intertrack and off-track outlets.

** Included are purses earned for Fairmount Park and race meets affiliated with intertrack outlets.

ILLINOIS STATE FAIR - SPRINGFIELD
AUGUST 13 - AUGUST 19

	ON TRACK AT SPRINGFIELD	INTER TRACK ON SPRINGFIELD	OFF TRACK ON SPRINGFIELD	ALL LOCATIONS ON SPRINGFIELD
HARNESS MEET				
Live Programs Raced	6	36	120	162
Total Live + Dark Days	6	0	0	6
Live Races Run	91	0	0	91
Attendance	N/A	N/A	N/A	N/A
Purse Distribution				1,253,200
Illinois Handle on Illinois Races	668,662	254,395	521,623	1,444,680
Illinois Handle on Out-of-State Races on Live Days	0	0	0	0
Combined Illinois Handle on Live Days	668,662	254,395	521,623	1,444,680
Illinois Handle on Out-of-State Races on Dark Days	0	0	0	0
Combined Illinois Handle on Live + Dark Days	668,662	254,395	521,623	1,444,680
Percentage of Total Combined Illinois Handle	46.28%	17.61%	36.11%	
Ill. Handle on Out-of-State Races on Live + Dark Days	0	0	0	0
Out-of-State Handle (Commingled) on Illinois Programs				27,380
Total Meet Handle on Live Days				1,472,060
Total Meet Handle on Live + Dark Days				1,472,060
Average Illinois Handle on Illinois Races	111,444	42,399	86,937	240,780
Avg. Ill. Handle on Out-of-State Races on Live Days	0	0	0	0
Average Combined Illinois Handle on Live Days	111,444	42,399	86,937	240,780
Avg. Ill. Handle on Out-of-State Races on Dark Days	N/A	N/A	N/A	N/A
Avg. Combined Illinois Handle on Live + Dark Days	111,444	42,399	86,937	240,780
Avg. Ill. Handle on Out-of-State Races on Live+Dark Days	0	0	0	0
Avg. Out-of-State Handle (Commingled) on Illinois Programs				4,563
Average Total Meet Handle on Live Days				245,343
Average Total Meet Handle on Live + Dark Days				245,343
Combined Illinois Handle	\$ 668,662	254,395	521,623	1,444,680
-Commission (Take Out)	\$ 132,183	50,447	102,847	285,477
Track Commission *	\$ 60,288	22,998	62,941	146,227
Purses Earned **	\$ 60,288	22,998	25,732	109,018
Out-of-State Simulcast Fee (3%)	\$ 0	0	0	0
Privilege Tax	\$ 11,607	4,451	8,958	25,016
Horse Racing Tax Allocation	\$ 0	0	5,216	5,216
Public Pool	\$ 536,479	203,948	418,776	1,159,203
-Breakage	\$ 6,118	2,087	3,825	12,030
Race Track Improvement Fund	\$ 3,059	1,044	1,913	6,015
Breakage to General Revenue	\$ 3,059	1,044	1,913	6,015
-Surcharge	\$ 5,268	3,045	8,556	16,869
Payout to Public	\$ 525,093	198,816	406,395	1,130,304
Privilege Tax	\$ 11,607	4,451	8,958	25,016
Breakage	\$ 6,118	2,087	3,825	12,030
Horse Racing Tax Allocation	\$ 0	0	5,216	5,216
License Fee	\$ 0	0	0	0
License Fee - Daily Handle	\$ 0	0	0	0
Admission Tax	\$ 0	0	0	0
Uncashed Tickets (1997)	\$ 2,686	1,022	2,096	5,804
TOTAL REVENUE TO STATE	\$ 20,411	7,560	20,095	48,066
AVG. DAILY STATE REVENUE	\$ 3,402	1,260	3,349	8,011

* Included are commissions earned by intertrack and off-track outlets.

** Included are purses earned for Fairmount Park and race meets affiliated with intertrack outlets.

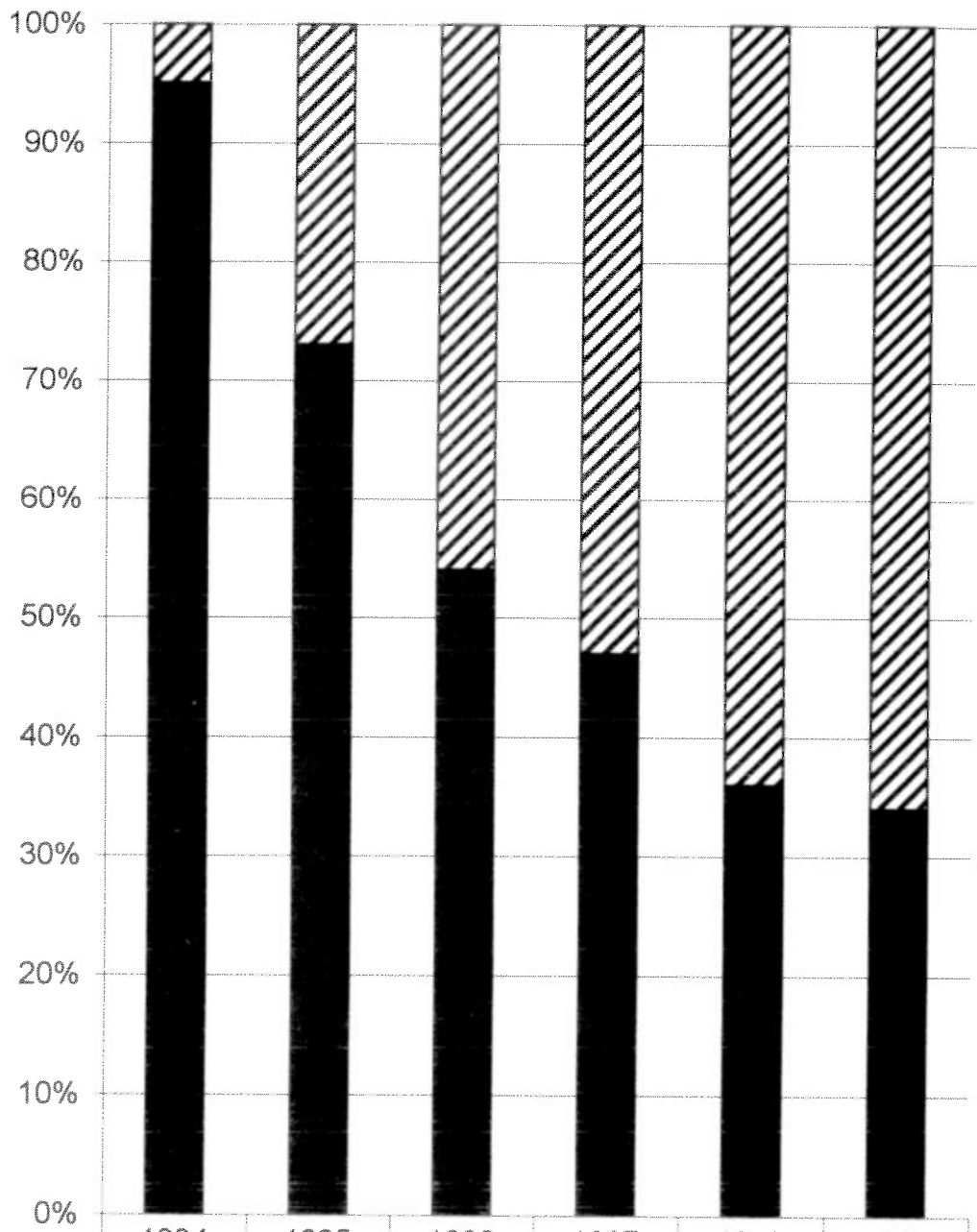
ILLINOIS STATE FAIR - DUQUOIN
AUGUST 30 - SEPTEMBER 4

	ON TRACK AT DUQUOIN	INTER TRACK ON DUQUOIN	OFF TRACK ON DUQUOIN	ALL LOCATIONS ON DUQUOIN
HARNESS MEET				
Live Programs Raced	5	30	100	135
Total Live + Dark Days	5	0	0	5
Live Races Run	61	0	0	61
Attendance	N/A	N/A	N/A	N/A
Purse Distribution				1,462,500
Illinois Handle on Illinois Races	351,986	146,965	311,047	809,998
Illinois Handle on Out-of-State Races on Live Days	0	0	0	0
Combined Illinois Handle on Live Days	351,986	146,965	311,047	809,998
Illinois Handle on Out-of-State Races on Dark Days	0	0	0	0
Combined Illinois Handle on Live + Dark Days	351,986	146,965	311,047	809,998
Percentage of Total Combined Illinois Handle	43.46%	18.14%	38.40%	
Ill. Handle on Out-of-State Races on Live + Dark Days	0	0	0	0
Out-of-State Handle (Commingled) on Illinois Programs				138,855
Total Meet Handle on Live Days				948,853
Total Meet Handle on Live + Dark Days				948,853
Average Illinois Handle on Illinois Races	70,397	29,393	62,209	162,000
Avg. Ill. Handle on Out-of-State Races on Live Days	0	0	0	0
Average Combined Illinois Handle on Live Days	70,397	29,393	62,209	162,000
Avg. Ill. Handle on Out-of-State Races on Dark Days	N/A	N/A	N/A	N/A
Avg. Combined Illinois Handle on Live + Dark Days	70,397	29,393	62,209	162,000
Avg. Ill. Handle on OutofState Races on Live+Dark Days	0	0	0	0
Avg. Out-of-State Handle (Commingled) on Illinois Programs				27,771
Average Total Meet Handle on Live Days				189,771
Average Total Meet Handle on Live + Dark Days				189,771
Combined Illinois Handle	\$ 351,986	146,965	311,047	809,998
-Commission (Take Out)	\$ 68,508	29,298	61,531	159,337
Track Commission *	\$ 31,359	13,352	37,709	82,420
Purses Earned **	\$ 31,359	13,352	15,344	60,055
Out-of-State Simulcast Fee (3%)	\$ 0	0	0	0
Privilege Tax	\$ 5,790	2,594	5,368	13,752
Horse Racing Tax Allocation	\$ 0	0	3,110	3,110
Public Pool	\$ 283,478	117,667	249,516	650,661
-Breakage	\$ 3,534	1,427	2,286	7,247
Race Track Improvement Fund	\$ 1,767	714	1,143	3,624
Breakage to General Revenue	\$ 1,767	714	1,143	3,624
-Surcharge	\$ 2,691	1,635	5,253	9,579
Payout to Public	\$ 277,253	114,605	241,977	633,835
Privilege Tax	\$ 5,790	2,594	5,368	13,752
Breakage	\$ 3,534	1,427	2,286	7,247
Horse Racing Tax Allocation	\$ 0	0	3,110	3,110
License Fee	\$ 0	0	0	0
License Fee - Daily Handle	\$ 0	0	0	0
Admission Tax	\$ 0	0	0	0
Uncashed Tickets (1997)	\$ 1,621	677	1,432	3,730
TOTAL REVENUE TO STATE	\$ 10,945	4,698	12,196	27,839
AVG. DAILY STATE REVENUE	\$ 2,189	940	2,439	5,568

* Included are commissions earned by intertrack and off-track outlets.

** Included are purses earned for Fairmount Park and race meets affiliated with intertrack outlets.

ILLINOIS HANDLE 1994-1999 PERCENTAGE WAGERED ON ILLINOIS RACES



▨ SIMULCAST RACES	5	27	46	53	64	66
■ LIVE ILLINOIS RACES	95	73	54	47	36	34

■ LIVE ILLINOIS RACES ▨ SIMULCAST RACES

SUMMARY OF INTERTRACK WAGERING STATISTICS

ARLINGTON INTERNATIONAL RACECOURSE
AS AN INTERTRACK SITE

	ILLINOIS LIVE	SIMUL- CASTS	TOTAL
Programs Wagered	801	7,149	7,950
Mutuel Handle	33,883,834	95,471,653	129,355,487
Program Average	42,302	13,355	161,492
Attendance	336,780	0	336,780
Program Average	420	0	420
Handle	33,883,834	95,471,653	129,355,487
-Commission (Take Out)	7,053,903	19,596,870	26,650,773
Track Commission	3,174,786	7,372,565	10,547,351
Purses Earned	3,174,786	7,372,565	10,547,351
Out-of-State Sim. Fee	0	2,864,150	2,864,150
Privilege Tax	704,331	1,987,590	2,691,921
Public Pool	26,829,931	75,874,783	102,704,714
-Breakage	180,028	466,904	646,932
RTIF	90,014	233,452	323,466
Breakage to Gen. Rev.	90,014	233,452	323,466
-Surcharge	410,047	1,136,712	1,546,759
Payout to Public	26,239,856	74,271,167	100,511,023
Privilege Tax	704,331	1,987,590	2,691,921
Breakage	180,028	466,904	646,932
Admission Tax	16,847	0	16,847
TOTAL STATE REVENUE	<u>901,206</u>	<u>2,454,494</u>	<u>3,355,700</u>

BALMORAL PARK
AS AN INTERTRACK SITE

	ILLINOIS LIVE	SIMUL- CASTS	TOTAL
Programs Wagered	597	5,216	5,813
Mutuel Handle	5,518,246	12,377,077	17,895,323
Program Average	9,243	2,373	29,975
Attendance	83,035	0	83,035
Program Average	139	0	139
Handle	5,518,246	12,377,077	17,895,323
-Commission (Take Out)	1,138,935	2,553,453	3,692,388
Track Commission	513,589	960,154	1,473,743
Purses Earned	513,589	960,154	1,473,743
Out-of-State Sim. Fee	0	371,312	371,312
Privilege Tax	111,757	261,833	373,590
Public Pool	4,379,311	9,823,624	14,202,935
-Breakage	33,833	62,173	96,006
RTIF	16,917	31,087	48,003
Breakage to Gen. Rev.	16,917	31,087	48,003
-Surcharge	66,719	147,031	213,750
Payout to Public	4,278,759	9,614,420	13,893,179
Privilege Tax	111,757	261,833	373,590
Breakage	33,833	62,173	96,006
Admission Tax	456	0	456
TOTAL STATE REVENUE	<u>146,046</u>	<u>324,006</u>	<u>470,052</u>

FAIRMOUNT PARK
AS AN INTERTRACK SITE

	ILLINOIS LIVE	SIMUL- CASTS	TOTAL
Programs Wagered	589	7,079	7,668
Mutuel Handle	10,304,082	48,953,873	59,257,955
Program Average	17,494	6,915	100,608
Attendance	79,114	0	79,114
Program Average	134	0	134
Handle	10,304,082	48,953,873	59,257,955
-Commission (Take Out)	2,127,473	9,913,338	12,040,811
Track Commission	959,781	3,741,413	4,701,194
Purses Earned	959,781	3,741,413	4,701,194
Out-of-State Sim. Fee	0	1,468,616	1,468,616
Privilege Tax	207,911	961,896	1,169,807
Public Pool	8,176,609	39,040,535	47,217,144
-Breakage	58,993	262,607	321,600
RTIF	29,497	131,304	160,800
Breakage to Gen. Rev.	29,497	131,304	160,800
-Surcharge	121,409	582,054	703,463
Payout to Public	7,996,207	38,195,874	46,192,081
Privilege Tax	207,911	961,896	1,169,807
Breakage	58,993	262,607	321,600
Admission Tax	7,617	0	7,617
TOTAL STATE REVENUE	<u>274,521</u>	<u>1,224,503</u>	<u>1,499,024</u>

HAWTHORNE RACE COURSE
AS AN INTERTRACK SITE (7/1-12/31)

	ILLINOIS LIVE	SIMUL- CASTS	TOTAL
Programs Wagered	305	1,700	2,005
Mutuel Handle	5,737,230	8,251,641	13,988,871
Program Average	18,811	4,854	45,865
Attendance	88,217	0	88,217
Program Average	289	0	289
Handle	5,737,230	8,251,641	13,988,871
-Commission (Take Out)	1,184,314	1,659,491	2,843,805
Track Commission	534,037	626,442	1,160,479
Purses Earned	534,037	626,442	1,160,479
Out-of-State Sim. Fee	0	247,549	247,549
Privilege Tax	116,240	159,058	275,298
Public Pool	4,552,916	6,592,150	11,145,066
-Breakage	33,277	46,947	80,224
RTIF	16,639	23,474	40,112
Breakage to Gen. Rev.	16,639	23,474	40,112
-Surcharge	67,023	95,609	162,632
Payout to Public	4,452,616	6,449,594	10,902,210
Privilege Tax	116,240	159,058	275,298
Breakage	33,277	46,947	80,224
Admission Tax	3,863	0	3,863
TOTAL STATE REVENUE	<u>153,380</u>	<u>206,005</u>	<u>359,385</u>

SUMMARY OF INTERTRACK WAGERING STATISTICS

MAYWOOD PARK
AS AN INTERTRACK SITEQUAD CITY DOWNS
AS AN INTERTRACK SITE

ILLINOIS LIVE	SIMUL- CASTS	TOTAL	ILLINOIS LIVE	SIMUL- CASTS	TOTAL	
647	5,735	6,382	801	7,140	7,941	Programs Wagered
24,036,123	48,081,555	72,117,678	4,944,186	11,367,696	16,311,882	Mutuel Handle
37,150	8,384	111,465	6,173	1,592	20,364	Program Average
261,974	0	261,974	0	0	0	Attendance
405	0	405	0	0	0	Program Average
24,036,123	48,081,555	72,117,678	4,944,186	11,367,696	16,311,882	Handle
4,980,521	9,802,136	14,782,657	1,042,918	2,329,407	3,372,325	-Commission (Take Out)
2,245,035	3,696,393	5,941,428	468,032	876,887	1,344,919	Track Commission
2,245,035	3,696,393	5,941,428	468,032	876,887	1,344,919	Purses Earned
0	1,442,447	1,442,447	0	341,031	341,031	Out-of-State Sim. Fee
490,451	966,903	1,457,354	106,854	234,602	341,456	Privilege Tax
19,055,602	38,279,419	57,335,021	3,901,268	9,038,289	12,939,557	Public Pool
124,229	244,452	368,681	27,910	65,165	93,075	-Breakage
62,115	122,226	184,341	13,955	32,583	46,538	RTIF
62,115	122,226	184,341	13,955	32,583	46,538	Breakage to Gen. Rev.
288,431	561,961	850,392	64,310	138,025	202,335	-Surcharge
18,642,942	37,473,006	56,115,948	3,809,048	8,835,099	12,644,147	Payout to Public
490,451	966,903	1,457,354	106,854	234,602	341,456	Privilege Tax
124,229	244,452	368,681	27,910	65,165	93,075	Breakage
18,382	0	18,382	0	0	0	Admission Tax
<u>633,062</u>	<u>1,211,355</u>	<u>1,844,417</u>	<u>134,764</u>	<u>299,767</u>	<u>434,531</u>	TOTAL STATE REVENUE

NATIONAL JOCKEY CLUB(SPTS)@HAWTHORNE
AS AN INTERTRACK SITE (1/1-6/30)

ILLINOIS LIVE	SIMUL- CASTS	TOTAL	
276	1,652	1,928	Programs Wagered
6,049,676	8,870,833	14,920,509	Mutuel Handle
21,919	5,370	54,060	Program Average
72,420	0	72,420	Attendance
262	0	262	Program Average
6,049,676	8,870,833	14,920,509	Handle
1,236,696	1,784,344	3,021,040	-Commission (Take Out)
558,902	673,445	1,232,347	Track Commission
558,902	673,445	1,232,347	Purses Earned
0	266,125	266,125	Out-of-State Sim. Fee
118,892	171,329	290,221	Privilege Tax
4,812,980	7,086,489	11,899,469	Public Pool
35,751	51,895	87,646	-Breakage
17,876	25,948	43,823	RTIF
17,876	25,948	43,823	Breakage to Gen. Rev.
70,853	103,480	174,333	-Surcharge
4,706,376	6,931,114	11,637,490	Payout to Public
118,892	171,329	290,221	Privilege Tax
35,751	51,895	87,646	Breakage
4,077	0	4,077	Admission Tax
<u>158,720</u>	<u>223,224</u>	<u>381,944</u>	TOTAL STATE REVENUE

SUMMARY OF OFF TRACK WAGERING STATISTICS

WAUKEGAN
ARLINGTON INT'L RACECOURSEWEED STREET
ARLINGTON INT'L RACECOURSE

	WAUKEGAN			WEED STREET		
	ILLINOIS LIVE	SIMUL- CASTS	TOTAL	ILLINOIS LIVE	SIMUL- CASTS	TOTAL
Programs Wagered	801	7,150	7,951	801	7,151	7,952
Mutuel Handle	10,603,705	34,052,218	44,655,923	16,629,904	54,716,588	71,346,492
Program Average	13,238	4,763	55,750	20,761	7,652	89,072
Handle	10,603,705	34,052,218	44,655,923	16,629,904	54,716,588	71,346,492
-Commission (Take Out)	2,194,118	6,954,168	9,148,286	3,421,195	11,071,075	14,492,270
Track Commission	1,403,215	2,453,314	3,856,529	2,185,898	3,903,514	6,089,412
Purses Earned	469,707	2,453,314	2,923,021	736,717	3,903,514	4,640,231
Out-of-State Sim. Fee	0	1,021,567	1,021,567	0	1,641,498	1,641,498
Privilege Tax	215,159	685,451	900,610	332,281	1,075,383	1,407,664
HRTA	106,037	340,522	446,559	166,299	547,166	713,465
Public Pool	8,409,587	27,098,050	35,507,637	13,208,709	43,645,513	56,854,222
-Breakage	56,002	159,675	215,677	91,900	283,964	375,864
RTIF	28,001	79,838	107,839	45,950	141,982	187,932
Breakage to Gen. Rev.	28,001	79,838	107,839	45,950	141,982	187,932
-Surcharge	204,308	662,523	866,831	325,935	1,075,330	1,401,265
Payout to Public	8,149,277	26,275,852	34,425,129	12,790,874	42,286,219	55,077,093
Privilege Tax	215,159	685,451	900,610	332,281	1,075,383	1,407,664
Breakage	56,002	159,675	215,677	91,900	283,964	375,864
HRTA	106,037	340,522	446,559	166,299	547,166	713,465
TOTAL STATE REVENUE	<u>377,198</u>	<u>1,185,648</u>	<u>1,562,846</u>	<u>590,480</u>	<u>1,906,513</u>	<u>2,496,993</u>

111TH & CORLISS
BALMORAL RACING CLUBDANVILLE
BALMORAL RACING CLUB

	111TH & CORLISS			DANVILLE		
	ILLINOIS LIVE	SIMUL- CASTS	TOTAL	ILLINOIS LIVE	SIMUL- CASTS	TOTAL
Programs Wagered	801	7,151	7,952	801	7,125	7,926
Mutuel Handle	20,609,332	39,366,519	59,975,851	1,720,107	5,982,482	7,702,589
Program Average	25,730	5,505	74,876	2,147	840	9,616
Handle	20,609,332	39,366,519	59,975,851	1,720,107	5,982,482	7,702,589
-Commission (Take Out)	4,359,421	8,133,834	12,493,255	363,493	1,261,155	1,624,648
Track Commission	2,796,007	2,865,637	5,661,644	233,298	443,738	677,036
Purses Earned	907,752	2,865,637	3,773,389	75,710	443,738	519,448
Out-of-State Sim. Fee	0	1,180,996	1,180,996	0	179,474	179,474
Privilege Tax	449,569	827,899	1,277,468	37,284	134,380	171,664
HRTA	206,093	393,665	599,758	17,201	59,825	77,026
Public Pool	16,249,911	31,232,685	47,482,596	1,356,614	4,721,327	6,077,941
-Breakage	89,746	168,535	258,281	8,257	23,153	31,410
RTIF	44,873	84,268	129,141	4,129	11,577	15,705
Breakage to Gen. Rev.	44,873	84,268	129,141	4,129	11,577	15,705
-Surcharge	387,592	752,130	1,139,722	33,173	114,369	147,542
Payout to Public	15,772,573	30,312,020	46,084,593	1,315,184	4,583,805	5,898,989
Privilege Tax	449,569	827,899	1,277,468	37,284	134,380	171,664
Breakage	89,746	168,535	258,281	8,257	23,153	31,410
HRTA	206,093	393,665	599,758	17,201	59,825	77,026
TOTAL STATE REVENUE	<u>745,408</u>	<u>1,390,099</u>	<u>2,135,507</u>	<u>62,742</u>	<u>217,358</u>	<u>280,100</u>

SUMMARY OF OFF TRACK WAGERING STATISTICS

CHAMPAIGN
BALMORAL RACING CLUB

ILLINOIS LIVE	SIMUL- CASTS	TOTAL
801	7,110	7,911
2,295,864	7,898,987	10,194,851
2,866	1,111	12,728
2,295,864	7,898,987	10,194,851
481,447	1,645,123	2,126,570
262,849	580,364	843,213
147,311	580,364	727,675
0	236,970	236,970
48,328	168,435	216,763
22,959	78,990	101,949
1,814,417	6,253,864	8,068,281
10,684	31,539	42,223
5,342	15,770	21,112
5,342	15,770	21,112
43,784	148,599	192,383
1,759,949	6,073,726	7,833,675
48,328	168,435	216,763
10,684	31,539	42,223
22,959	78,990	101,949
<u>81,971</u>	<u>278,964</u>	<u>360,935</u>

BLOOMINGTON
BALMORAL RACING CLUB

ILLINOIS LIVE	SIMUL- CASTS	TOTAL	
801	7,110	7,911	Programs Wagered
2,787,235	8,820,738	11,607,973	Mutuel Handle
3,480	1,241	14,492	Program Average
2,787,235	8,820,738	11,607,973	Handle
578,982	1,822,189	2,401,171	-Commission (Take Out)
314,649	642,090	956,739	Track Commission
179,088	642,090	821,178	Purses Earned
0	264,622	264,622	Out-of-State Sim. Fee
57,373	185,180	242,553	Privilege Tax
27,872	88,207	116,079	HRTA
2,208,253	6,998,549	9,206,802	Public Pool
15,927	41,507	57,434	-Breakage
7,964	20,754	28,717	RTIF
7,964	20,754	28,717	Breakage to Gen. Rev.
54,517	168,530	223,047	-Surcharge
2,137,809	6,788,512	8,926,321	Payout to Public
57,373	185,180	242,553	Privilege Tax
15,927	41,507	57,434	Breakage
27,872	88,207	116,079	HRTA
<u>101,172</u>	<u>314,894</u>	<u>416,066</u>	TOTAL STATE REVENUE

SPRINGFIELD
OGDEN-FAIRMOUNT

ILLINOIS LIVE	SIMUL- CASTS	TOTAL
801	6,896	7,697
3,825,456	8,955,346	12,780,802
4,776	1,299	15,956
3,825,456	8,955,346	12,780,802
819,395	1,871,584	2,690,979
525,981	659,445	1,185,426
168,653	659,445	828,098
0	268,660	268,660
86,506	194,481	280,987
38,255	89,553	127,808
3,006,061	7,083,762	10,089,823
16,364	36,208	52,572
8,182	18,104	26,286
8,182	18,104	26,286
73,409	170,970	244,379
2,916,288	6,876,584	9,792,872
86,506	194,481	280,987
16,364	36,208	52,572
38,255	89,553	127,808
<u>141,125</u>	<u>320,242</u>	<u>461,367</u>

GRAYVILLE
OGDEN-FAIRMOUNT

ILLINOIS LIVE	SIMUL- CASTS	TOTAL	
797	6,311	7,108	Programs Wagered
1,350,866	5,595,696	6,946,562	Mutuel Handle
1,695	887	8,716	Program Average
1,350,866	5,595,696	6,946,562	Handle
275,813	1,128,352	1,404,165	-Commission (Take Out)
175,640	397,389	573,029	Track Commission
60,222	397,389	457,611	Purses Earned
0	167,871	167,871	Out-of-State Sim. Fee
26,442	109,746	136,188	Privilege Tax
13,509	55,957	69,466	HRTA
1,075,053	4,467,344	5,542,397	Public Pool
7,878	30,034	37,912	-Breakage
3,939	15,017	18,956	RTIF
3,939	15,017	18,956	Breakage to Gen. Rev.
26,489	109,592	136,081	-Surcharge
1,040,686	4,327,718	5,368,404	Payout to Public
26,442	109,746	136,188	Privilege Tax
7,878	30,034	37,912	Breakage
13,509	55,957	69,466	HRTA
<u>47,829</u>	<u>195,737</u>	<u>243,566</u>	TOTAL STATE REVENUE

SUMMARY OF OFF TRACK WAGERING STATISTICS

EFFINGHAM
OGDEN-FAIRMOUNTCARBONDALE
OGDEN-FAIRMOUNT

	ILLINOIS LIVE	SIMUL- CASTS	TOTAL	ILLINOIS LIVE	SIMUL- CASTS	TOTAL
Programs Wagered	801	6,292	7,093	799	6,319	7,118
Mutuel Handle	1,348,208	3,022,197	4,370,405	1,955,400	5,762,036	7,717,436
Program Average	1,683	480	5,456	2,447	912	9,659
Handle	1,348,208	3,022,197	4,370,405	1,955,400	5,762,036	7,717,436
-Commission (Take Out)	286,103	632,359	918,462	401,764	1,184,456	1,586,220
Track Commission	183,176	221,846	405,022	218,049	417,630	635,679
Purses Earned	59,471	221,846	281,317	125,270	417,630	542,900
Out-of-State Sim. Fee	0	90,666	90,666	0	172,861	172,861
Privilege Tax	29,974	67,779	97,753	38,891	118,715	157,606
HRTA	13,482	30,222	43,704	19,554	57,620	77,174
Public Pool	1,062,105	2,389,838	3,451,943	1,553,636	4,577,580	6,131,216
-Breakage	7,203	14,218	21,421	11,685	27,701	39,386
RTIF	3,602	7,109	10,711	5,843	13,851	19,693
Breakage to Gen. Rev.	3,602	7,109	10,711	5,843	13,851	19,693
-Surcharge	26,879	59,025	85,904	37,353	112,313	149,666
Payout to Public	1,028,023	2,316,595	3,344,618	1,504,598	4,437,566	5,942,164
Privilege Tax	29,974	67,779	97,753	38,891	118,715	157,606
Breakage	7,203	14,218	21,421	11,685	27,701	39,386
HRTA	13,482	30,222	43,704	19,554	57,620	77,174
TOTAL STATE REVENUE	<u>50,659</u>	<u>112,219</u>	<u>162,878</u>	<u>70,130</u>	<u>204,036</u>	<u>274,166</u>

ALTON-BELLE
OGDEN-FAIRMOUNTSTATE & LAKE
HAWTHORNE RACE COURSE

	ILLINOIS LIVE	SIMUL- CASTS	TOTAL	ILLINOIS LIVE	SIMUL- CASTS	TOTAL
Programs Wagered	717	6,111	6,828	801	7,147	7,948
Mutuel Handle	3,215,022	9,431,181	12,646,203	12,896,604	36,620,125	49,516,729
Program Average	4,484	1,543	17,638	16,101	5,124	61,819
Handle	3,215,022	9,431,181	12,646,203	12,896,604	36,620,125	49,516,729
-Commission (Take Out)	664,506	1,911,948	2,576,454	2,694,305	7,474,254	10,168,559
Track Commission	362,395	674,244	1,036,639	1,725,168	2,635,473	4,360,641
Purses Earned	205,135	674,244	879,379	569,798	2,635,473	3,205,271
Out-of-State Sim. Fee	0	282,935	282,935	0	1,098,604	1,098,604
Privilege Tax	64,826	186,213	251,039	270,373	738,503	1,008,876
HRTA	32,150	94,312	126,462	128,966	366,201	495,167
Public Pool	2,550,516	7,519,233	10,069,749	10,202,299	29,145,871	39,348,170
-Breakage	17,975	51,198	69,173	68,404	190,700	259,104
RTIF	8,988	25,599	34,587	34,202	95,350	129,552
Breakage to Gen. Rev.	8,988	25,599	34,587	34,202	95,350	129,552
-Surcharge	63,202	185,096	248,298	256,394	712,566	968,960
Payout to Public	2,469,339	7,282,939	9,752,278	9,877,501	28,242,605	38,120,106
Privilege Tax	64,826	186,213	251,039	270,373	738,503	1,008,876
Breakage	17,975	51,198	69,173	68,404	190,700	259,104
HRTA	32,150	94,312	126,462	128,966	366,201	495,167
TOTAL STATE REVENUE	<u>114,951</u>	<u>331,723</u>	<u>446,674</u>	<u>467,743</u>	<u>1,295,404</u>	<u>1,763,147</u>

SUMMARY OF OFF TRACK WAGERING STATISTICS

OAK BROOK TERRACE
HAWTHORNE RACE COURSE

ILLINOIS LIVE	SIMUL- CASTS	TOTAL
801	7,149	7,950
23,083,156	56,024,130	79,107,286
28,818	7,837	98,761
23,083,156	56,024,130	79,107,286
4,781,950	11,452,389	16,234,339
3,059,468	4,038,850	7,098,318
1,020,134	4,038,850	5,058,984
0	1,680,724	1,680,724
471,516	1,133,724	1,605,240
230,832	560,241	791,073
18,301,206	44,571,741	62,872,947
125,398	273,479	398,877
62,699	136,740	199,439
62,699	136,740	199,439
453,188	1,088,145	1,541,333
17,722,620	43,210,117	60,932,737
471,516	1,133,724	1,605,240
125,398	273,479	398,877
230,832	560,241	791,073
<u>827,746</u>	<u>1,967,444</u>	<u>2,795,190</u>

WEST JACKSON
MAYWOOD PARK TROT

ILLINOIS LIVE	SIMUL- CASTS	TOTAL	
801	7,145	7,946	Programs Wagered
10,730,322	30,299,741	41,030,063	Mutuel Handle
13,396	4,241	51,224	Program Average
10,730,322	30,299,741	41,030,063	Handle
2,217,277	6,122,755	8,340,032	-Commission (Take Out)
1,418,459	2,160,083	3,578,542	Track Commission
473,940	2,160,083	2,634,023	Purses Earned
0	908,992	908,992	Out-of-State Sim. Fee
217,575	590,600	808,175	Privilege Tax
107,303	302,997	410,300	HRTA
8,513,045	24,176,986	32,690,031	Public Pool
58,643	169,213	227,856	-Breakage
29,322	84,607	113,928	RTIF
29,322	84,607	113,928	Breakage to Gen. Rev.
208,003	594,569	802,572	-Surcharge
8,246,399	23,413,204	31,659,603	Payout to Public
217,575	590,600	808,175	Privilege Tax
58,643	169,213	227,856	Breakage
107,303	302,997	410,300	HRTA
<u>383,521</u>	<u>1,062,810</u>	<u>1,446,331</u>	TOTAL STATE REVENUE

NORTH AURORA
MAYWOOD PARK TROT

ILLINOIS LIVE	SIMUL- CASTS	TOTAL
801	7,142	7,943
8,670,083	19,978,290	28,648,373
10,824	2,797	35,766
8,670,083	19,978,290	28,648,373
1,788,075	4,040,663	5,828,738
1,142,028	1,424,856	2,566,884
383,927	1,424,856	1,808,783
0	599,349	599,349
175,419	391,819	567,238
86,701	199,783	286,484
6,882,008	15,937,627	22,819,635
50,601	102,948	153,549
25,301	51,474	76,775
25,301	51,474	76,775
171,451	389,153	560,604
6,659,956	15,445,526	22,105,482
175,419	391,819	567,238
50,601	102,948	153,549
86,701	199,783	286,484
<u>312,721</u>	<u>694,550</u>	<u>1,007,271</u>

EMPRESS (JOLIET)
MAYWOOD PARK TROT

ILLINOIS LIVE	SIMUL- CASTS	TOTAL	
800	7,082	7,882	Programs Wagered
3,121,756	6,379,731	9,501,487	Mutuel Handle
3,902	901	11,877	Program Average
3,121,756	6,379,731	9,501,487	Handle
637,455	1,293,508	1,930,963	-Commission (Take Out)
344,504	456,299	800,803	Track Commission
200,605	456,299	656,904	Purses Earned
0	191,392	191,392	Out-of-State Sim. Fee
61,128	125,721	186,849	Privilege Tax
31,218	63,797	95,015	HRTA
2,484,301	5,086,223	7,570,524	Public Pool
19,629	36,622	56,251	-Breakage
9,815	18,311	28,126	RTIF
9,815	18,311	28,126	Breakage to Gen. Rev.
58,867	124,591	183,458	-Surcharge
2,405,805	4,925,010	7,330,815	Payout to Public
61,128	125,721	186,849	Privilege Tax
19,629	36,622	56,251	Breakage
31,218	63,797	95,015	HRTA
<u>111,975</u>	<u>226,140</u>	<u>338,115</u>	TOTAL STATE REVENUE

SUMMARY OF OFF TRACK WAGERING STATISTICS

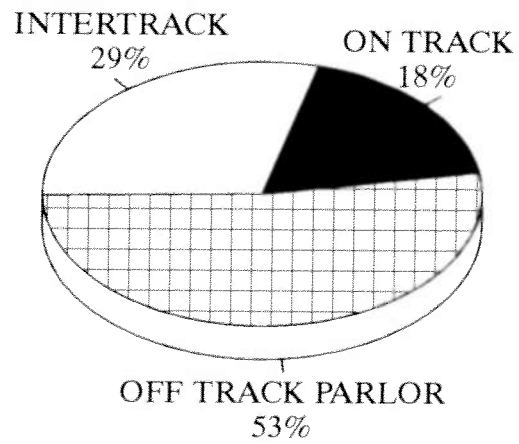
JOLIET
NATIONAL JOCKEY CLUBCRESTWOOD
NATIONAL JOCKEY CLUB

	JOLIET			CRESTWOOD		
	ILLINOIS LIVE	SIMUL- CASTS	TOTAL	ILLINOIS LIVE	SIMUL- CASTS	TOTAL
Programs Wagered	801	7,145	7,946	801	7,150	7,951
Mutuel Handle	5,825,283	13,371,515	19,196,798	25,192,442	47,309,691	72,502,133
Program Average	7,273	1,871	23,966	31,451	6,617	90,515
Handle	5,825,283	13,371,515	19,196,798	25,192,442	47,309,691	72,502,133
-Commission (Take Out)	1,209,997	2,737,617	3,947,614	5,202,599	9,672,568	14,875,167
Track Commission	774,553	964,708	1,739,261	3,323,051	3,407,523	6,730,574
Purses Earned	257,120	964,708	1,221,828	1,114,821	3,407,523	4,522,344
Out-of-State Sim. Fee	0	401,145	401,145	0	1,419,291	1,419,291
Privilege Tax	120,071	273,341	393,412	512,803	965,134	1,477,937
HRTA	58,253	133,715	191,968	251,924	473,097	725,021
Public Pool	4,615,286	10,633,898	15,249,184	19,989,843	37,637,123	57,626,966
-Breakage	30,108	66,111	96,219	129,244	220,745	349,989
RTIF	15,054	33,056	48,110	64,622	110,373	174,995
Breakage to Gen. Rev.	15,054	33,056	48,110	64,622	110,373	174,995
-Surcharge	111,286	256,928	368,214	483,922	914,713	1,398,635
Payout to Public	4,473,892	10,310,859	14,784,751	19,376,677	36,501,665	55,878,342
Privilege Tax	120,071	273,341	393,412	512,803	965,134	1,477,937
Breakage	30,108	66,111	96,219	129,244	220,745	349,989
HRTA	58,253	133,715	191,968	251,924	473,097	725,021
TOTAL STATE REVENUE	<u>208,432</u>	<u>473,167</u>	<u>681,599</u>	<u>893,971</u>	<u>1,658,976</u>	<u>2,552,947</u>

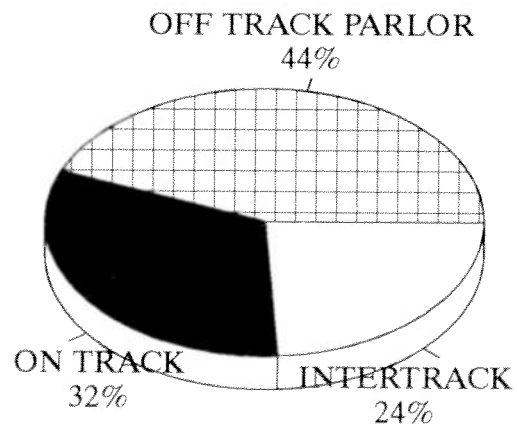
PERU
NATIONAL JOCKEY CLUBROCKFORD
QUAD CITY DOWNS

	PERU			ROCKFORD		
	ILLINOIS LIVE	SIMUL- CASTS	TOTAL	ILLINOIS LIVE	SIMUL- CASTS	TOTAL
Programs Wagered	800	7,066	7,866	801	7,136	7,937
Mutuel Handle	1,960,632	3,685,222	5,645,854	7,192,212	17,030,728	24,222,940
Program Average	2,451	522	7,057	8,979	2,387	30,241
Handle	1,960,632	3,685,222	5,645,854	7,192,212	17,030,728	24,222,940
-Commission (Take Out)	410,034	755,016	1,165,050	1,501,823	3,496,643	4,998,466
Track Commission	223,170	266,407	489,577	961,234	1,232,484	2,193,718
Purses Earned	126,074	266,407	392,481	317,954	1,232,484	1,550,438
Out-of-State Sim. Fee	0	110,557	110,557	0	510,922	510,922
Privilege Tax	41,184	74,793	115,977	150,713	350,446	501,159
HRTA	19,606	36,852	56,458	71,922	170,307	242,229
Public Pool	1,550,598	2,930,206	4,480,804	5,690,389	13,534,085	19,224,474
-Breakage	9,470	17,632	27,102	37,570	77,810	115,380
RTIF	4,735	8,816	13,551	18,785	38,905	57,690
Breakage to Gen. Rev.	4,735	8,816	13,551	18,785	38,905	57,690
-Surcharge	36,912	71,738	108,650	140,248	329,525	469,773
Payout to Public	1,504,216	2,840,836	4,345,052	5,512,571	13,126,750	18,639,321
Privilege Tax	41,184	74,793	115,977	150,713	350,446	501,159
Breakage	9,470	17,632	27,102	37,570	77,810	115,380
HRTA	19,606	36,852	56,458	71,922	170,307	242,229
TOTAL STATE REVENUE	<u>70,260</u>	<u>129,277</u>	<u>199,537</u>	<u>260,205</u>	<u>598,563</u>	<u>858,768</u>

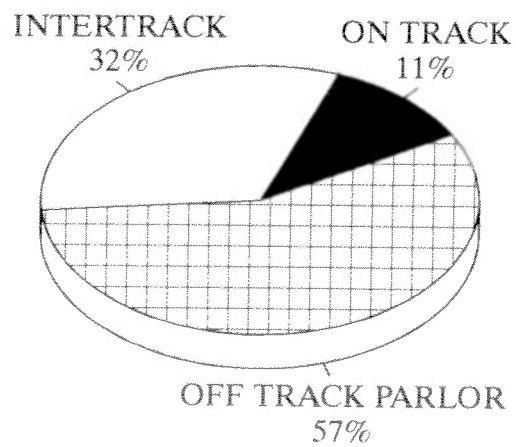
1999 ILLINOIS HANDLE
ILLINOIS RACES AND SIMULCAST RACES



ILLINOIS RACES ONLY



SIMULCAST RACES ONLY



**ILLINOIS DEPARTMENT OF AGRICULTURE
HORSE RACING PROGRAMS
ILLINOIS STANDARD BRED BREEDERS FUND
1999 PURSES AND AWARDS PAID**

TRACK/ASSOCIATION	STAKES AND LATE CLOSERS		OVERNITES		BREEDERS'	TOTAL
	RACES	PURSES	RACES	PURSES	AWARDS	PURSES AND BREEDERS' AWARDS
BALMORAL PARK <i>Balmoral Racing Club</i>	157	\$3,700,220	737	\$5,082,100	\$673,532	\$9,455,852
MAYWOOD PARK <i>Maywood Park Trot, Inc.</i>	42	\$489,100	274	\$1,790,300	\$213,773	\$2,493,173
<i>Associates Racing Assn.</i>	9	\$287,700	139	\$930,900	\$118,975	\$1,337,575
<i>Egyptian Trotting Assn.</i>	20	\$557,500	130	\$908,100	\$116,668	\$1,582,268
FAIRMOUNT PARK <i>Ogden-Fairmount</i>	4	\$63,900	79	\$208,080	\$106,691	\$378,671
ILLINOIS STATE FAIR <i>Maywood & Balmoral</i>	68	\$810,000	7	\$7,000	\$5,928	\$822,928
DU QUOIN STATE FAIR <i>Maywood & Balmoral</i>	<u>30</u>	<u>\$540,000</u>	<u>8</u>	<u>\$12,000</u>	<u>\$3,220</u>	<u>\$555,220</u>
PARI-MUTUEL TOTALS	330	\$6,448,420	1,374	\$8,938,480	\$1,238,787	\$16,625,687
NON-PARI-MUTUEL RACING						
County Fairs						
<i>Colt Association Racing</i>	576	\$1,254,938				\$1,254,938
<i>ICF Aged Stakes</i>						\$16,200
<i>Mt. Sterling</i>	5	\$16,200				\$16,200
<i>Downstate Classic</i>						\$27,525
<i>Decatur (3 Y.O.)</i>	4	\$27,525			Note: 3FP & 3FT Canceled Due to Rain	\$27,525
<i>Lincoln (2 Y.O.)</i>	10	\$52,300				\$52,300
<i>Illinois Stallion Stakes</i>						\$26,200
<i>Martinsville</i>	8	\$26,200				\$26,200
<i>Greene County Days</i>						\$14,940
<i>Carrollton</i>	6	\$14,940				\$14,940
ISOBA Summer & Fall Previews						
<i>DuQuoin (6/6)</i>	21	\$16,300				\$16,300
<i>Springfield (6/10) (Fall '98 make-up races)</i>	15	\$16,100				\$16,100
<i>Springfield (6/19)</i>	19	\$16,200				\$16,200
<i>Springfield (10/2)</i>					Rained Out	
NON-PARI-MUTUEL TOTALS	664	\$1,440,703				\$1,440,703
ILLINOIS DEPT. OF AGRICULTURE						
<i>Million Dollar Bonus for 2-Year-Olds*</i>						\$1,020,000
<i>Million Dollar Bonus for 3-Year-Olds**</i>						\$1,010,000
1999 GRAND TOTALS	<u>994</u>	<u>\$7,889,123</u>	<u>1,374</u>	<u>\$8,938,480</u>	<u>\$1,238,787</u>	<u>\$20,096,390</u>

These 1999 figures are only for races restricted to Illinois Conceived and Foaled Standardbreds (ICF) that are properly registered with the Department of Agriculture, and do not include Illinois Conceived and Foaled and/or Illinois Owned (ICF/IO) races and open company stake and overnite winners.

* Two ICF two-year-olds shared the Million Dollar Bonus in 1999 and the Department awarded \$10,000 Consolation Bonus prizes to the owner(s) of the high-point horses in each of the other two divisions.

** Three ICF three-year-olds shared the Million Dollar Bonus in 1999 and a \$10,000 Consolation Bonus was awarded in the remaining division.

ILLINOIS DEPARTMENT OF AGRICULTURE
 HORSE RACING PROGRAMS
 1999 ILLINOIS THOROUGHBRED BREEDERS FUND PURSES AND AWARDS PAID

TRACK/ASSOCIATION	IL-REGISTERED STAKES		IL-RESTRICTED RACES		OPEN RACES	WINNERS' SHARE		BREEDERS' AWARDS	TOTAL PURSES AND AWARDS
	RACES	PURSES	RACES	PURSES		INCL. ANY OWNERS' AWARDS	PLACE/SHOW OWNERS' AWARDS		
SPORTSMAN'S@HAWTHORNE <i>National Jockey Club</i>	14	\$906,950	202	\$4,856,120	158	\$2,040,995	\$348,231	\$582,914	\$8,735,210
HAWTHORNE RACE COURSE <i>Hawthorne Race Course, Inc.</i>	13	\$1,008,050	218	\$5,445,900	281	\$4,133,792	\$573,799	\$834,229	\$11,995,770
FAIRMOUNT PARK <i>Ogden-Fairmount, Inc.</i>	6	\$154,100	90	\$403,600	383	\$1,577,540	\$187,526	\$197,988	\$2,520,754
PARI-MUTUEL TOTALS	33	\$2,069,100	510	\$10,705,620	822	\$7,752,327	\$1,109,556	\$1,615,131	\$23,251,734
Stallion Owners Awards									\$311,012
County Fairs Racing									\$35,000
TOTAL OF PROGRAM									<u>\$23,597,746</u>

NOTES:
