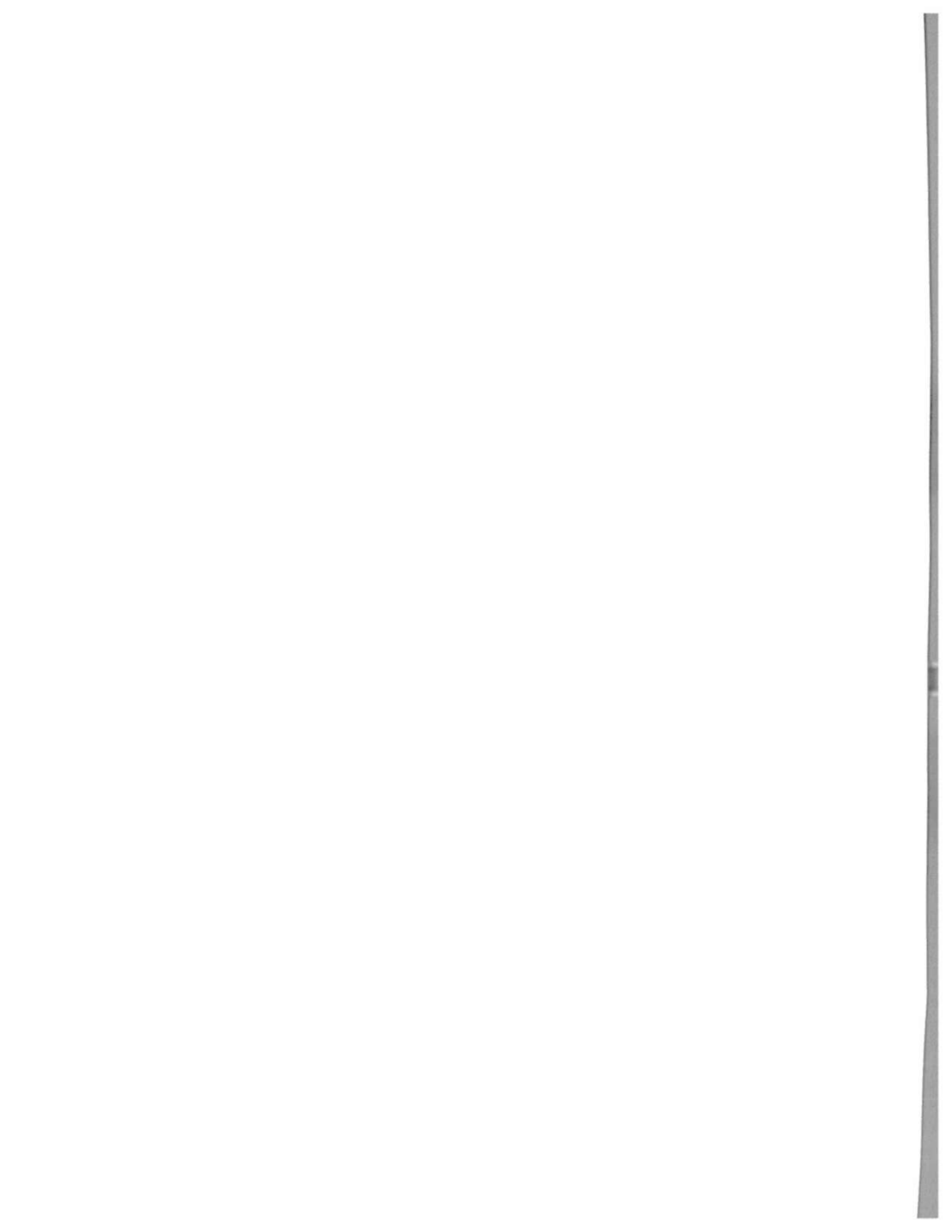


ILLINOIS RACING BOARD





ILLINOIS RACING BOARD

Gene Lamb
Champaign
Chairman



Ralph M. Gonzalez
Jacksonville



William E. Jackson
Chicago



James M. Kane
Long Grove



Joseph F. Kindlon
Wheaton



Louise E. O'Sullivan
Chicago



J. Gerard Peck, D.V.M.
Des Plaines



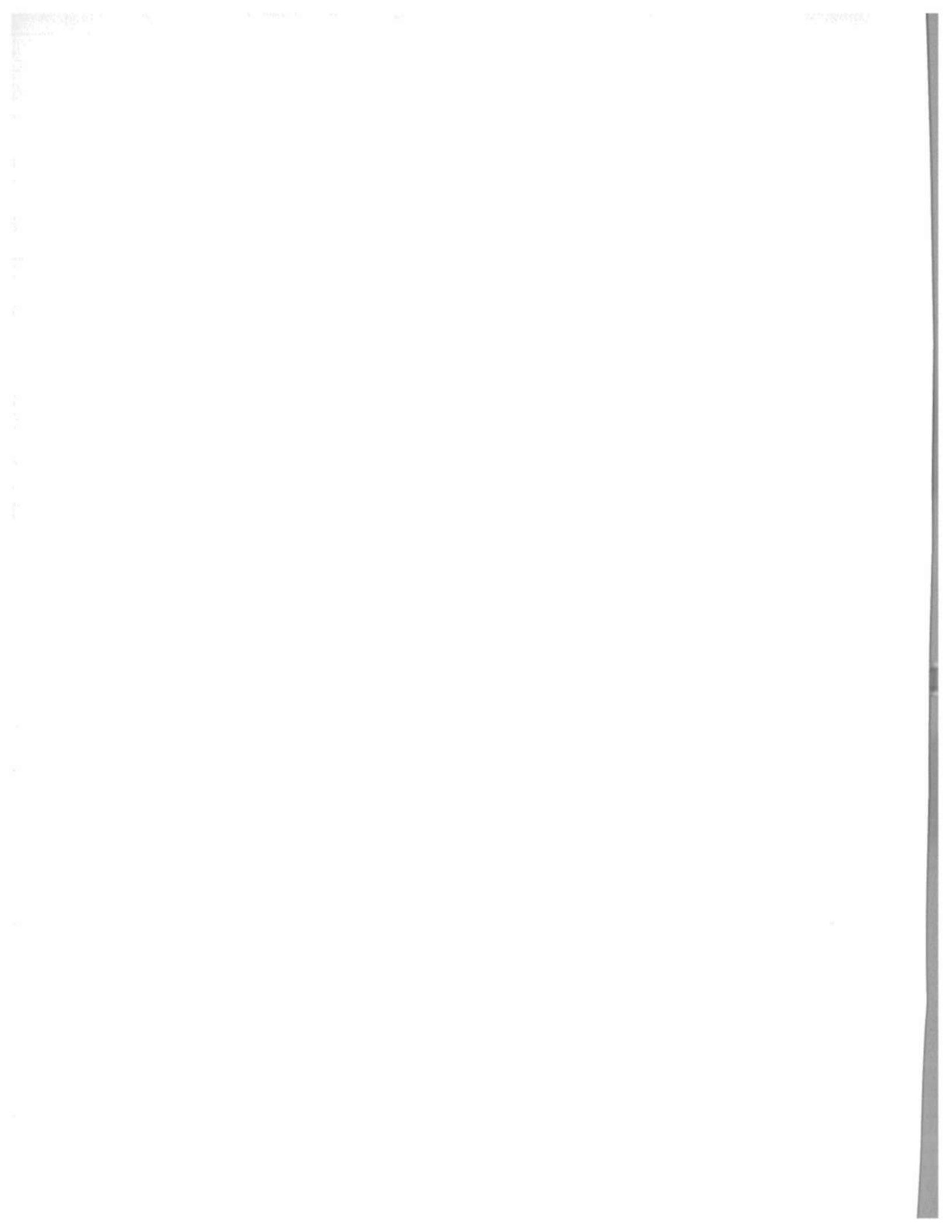
Lorna E. Propes
Evanston



John B. Simon
Chicago



Jack L. Kubik - Executive Director
Marc V. Laino - Deputy Director
Shelley Kalita - Laboratory Director
Bob Lang - State Director of Mutuels

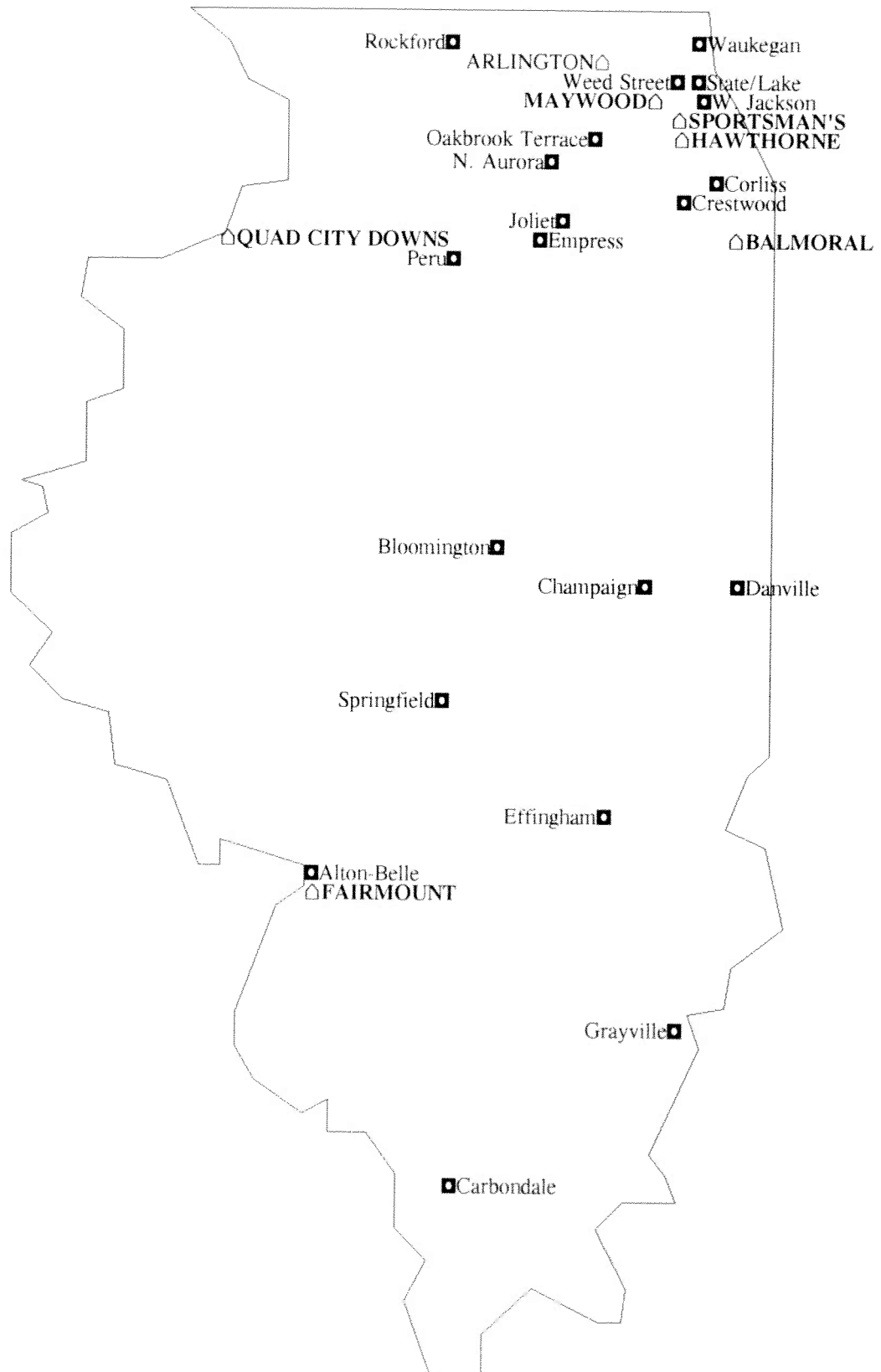


CONTENTS

Map of Illinois Racetracks and OTB Parlors	2
1998 Illinois Horses of the Year	3
Review	4
Duties of the Board	6
Laboratory	8
MONEY TO ILLINOIS	
Sources and Allocation of Revenue-Exhibit I	10
Cash Disbursements-Exhibit II	11
STATISTICAL DATA	
1980 - 1998 Illinois Handles	12
1998 Disbursement of Illinois Handle	14
1996 - 1998 Monthly Handle Comparison	15
Comparison of Handle On Track, Intertrack and Off Track	16
On Track Totals	18
Intertrack Totals	19
Off Track Totals	20
All Racing Totals	21
Comparison of Wagering Pools	22
1998 Off Track Parlor and Intertrack Handles	24
Summary of Parlor Surcharges and Revenues to City and County	25
1998 Commingled Handle vs. Simulcast Handle	26
1998 Illinois Handle on Out-of-State Tracks	27
1998 Racing Dates Schedule	28
1999 Racing Dates Schedule	29
RACE MEETING STATISTICS	
THOROUGHBRED	
National Jockey Club - Sportsman's Park	30
Hawthorne Race Course, Inc. - Hawthorne Race Course	31
Ogden-Fairmount, Inc. - Fairmount Park	32
HARNESS	
Maywood Park Trotting, Egyptian Trotting and Associates Racing - Maywood Park	33
Balmoral Racing Club, Inc. - Balmoral Park	37
Ogden-Fairmount, Inc. - Fairmount Park	38
State Fairs - Springfield and DuQuoin	39
INTERTRACK AND OFF TRACK LOCATIONS	
Intertrack Sites	42
Off Track Parlor Sites	44
Major Stakes Races	49
Leading Thoroughbred Jockeys and Trainers	50
Leading Harness Drivers and Trainers	51
Breeders Fund Purses and Awards Paid	52

1998 ILLINOIS RACETRACKS AND OTB PARLORS

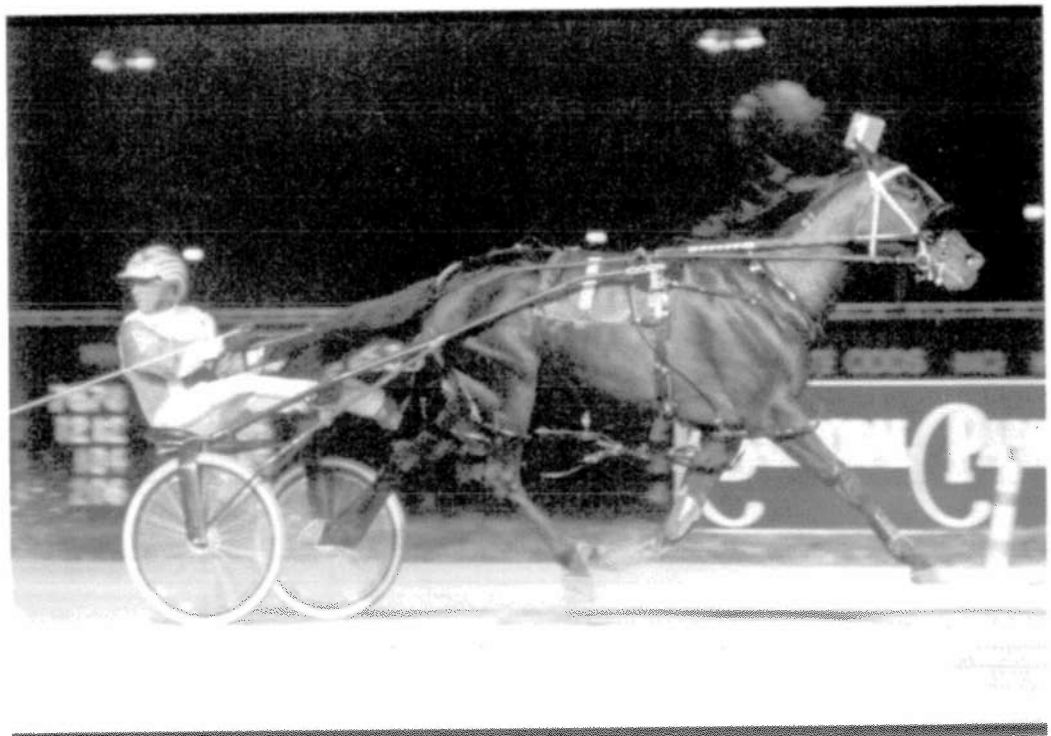
△ RACETRACK ■ OTB Parlor



1998 ILLINOIS HORSES OF THE YEAR



Buck's Boy - 1998 Illinois Horse of the Year
Photo Credit: Rob Moskal & Equine Expressions



Ohyouprettything - 1998 Illinois Harness Horse of the Year
Photo Credit: REB Photos

REVIEW

Although total handle on horse racing exceeded \$1 billion for the eleventh consecutive year, Illinois experienced a decline of nearly 8% from 1997. The termination of live racing at Arlington International Racecourse as well as live harness racing at Sportsman's Park and Hawthorne Race Course, were major contributors toward this decline. Of the \$1,087,061,250 wagered in Illinois, thoroughbred racing accounted for \$676,659,865, a decrease of less than 1% while harness racing contributed \$410,401,385, down 18%. Only 36% of all handle in 1998 was on Illinois races, as compared to 47% in 1997. An additional \$455 million, a decrease of 13%, was wagered on Illinois races in other states.

As a result of Arlington's decision not to conduct a live thoroughbred meet in 1998, Sportsman's and Hawthorne discontinued harness racing and divided the Chicago thoroughbred dates. A March 1st start-up date enabled Sportsman's to guarantee daily overnight purses of at least \$200,000. Meanwhile, Balmoral Park and Maywood Park split the Chicago harness dates with Balmoral racing four programs per week and Maywood three. However, due to a contract impasse between the harness horsemen and Maywood/Balmoral, the opening of the Chicago harness circuit was delayed until February 5th. A total of 35 live harness programs were lost due to the contract dispute.

Several major announcements were made in 1998, most notably the appointment of a new board member and the resignation of the Board's Executive Director. On May 14th, Governor Edgar appointed Dr. Joseph Peck, a small animal veterinarian from Des

Plaines, Illinois, to the Board. Dr. Peck has had a life-long association with the horse racing industry. Executive Director Joseph Sinopoli announced his resignation in November after 12 years of service, the last eight as Executive Director. Prior to his appointment as Executive Director, Mr. Sinopoli served as Deputy Director and Legal Counsel. He represented the State of Illinois on many advisory panels for the Association of Racing Commissioners International.

In April, National Jockey Club unveiled a major reconstruction project that would transform Sportsman's Park into a dual-purpose automobile and thoroughbred racing facility. Chicago Motor Speedway at Sportsman's Park announced plans to schedule a championship auto race on August 22, 1999, with thoroughbred racing scheduled to resume in the year 2000.

Governor Edgar's passion for horse racing was the driving force behind the mid-year, nearly \$7 million appropriation, from the state's General Revenue Fund to the Illinois Department of Agriculture for reimbursement to the horsemen's purse accounts in the amount equal to the purse recapture deducted.

While total purses paid including all supplements decreased 4% to \$84.4 million, the average total daily purses paid at the Chicagoland thoroughbred tracks were up almost 20% from the previous year while the Chicagoland harness tracks saw an increase in average daily purses of 28%. The decline in total purses paid can be directly attributed to a 24% decrease in the total number of racing programs. In 1997, thoroughbred and harness combined for 1,007 racing programs. In 1998, the number of racing programs was reduced to 766.

As a result of legislation enacted in

1991, the Racing Industry Charitable Foundation received \$750,000 through racetrack funding. The Foundation provides on-site medical, dental and educational services, health screenings, substance abuse counseling, treatment for gambling disorders, and other related services. The 1998 grant enabled the Foundation to perform 18,987 medical services, 11,811 dental services, 19,242 social services, and 5,260 services for addiction treatment and counseling. The Foundation continues to provide wide ranging health and social services to thoroughbred and harness horsemen throughout the state.

Disbursements from the racetrack improvement fund totaled \$2.5 million in 1998. Fairmount purchased track equipment, replaced the roofs on two of its barns, purchased kitchen equipment, and replaced a wheel loader.

Balmoral upgraded its security system, made equipment upgrades to the TV control room, constructed an office for the Director of Racing, made landscaping improvements throughout the grounds, and installed new entryway doors in the grandstand and clubhouse.

Hawthorne completed a number of improvements to its backside and grandstand facilities. Remodeling projects included the first and second floors of the grandstand, first and third floors of the clubhouse, the Gold Cup Room, the Turf Club, and the outside box seats. Hawthorne also improved its HVAC system, renovated the parking lots, constructed new bathrooms in the barn area, and installed new flooring in the grandstand and clubhouse.

Maywood installed air conditioning units in the drivers room and paddock kitchen, installed an absorption chiller, made numerous upgrades to the money room, and installed a general ledger accounting system. Upgrades were made to the computer network, asphalt

was replaced in the barn area, and new accounting software was installed.

BUCK'S BOY, the first Illinois-bred to win a Breeders' Cup race, became the first Illinois-bred to be voted an Eclipse Award when he was honored as the top male turf horse in America in 1998. The gelded son of Bucksplasher was also voted the 1998 Illinois Thoroughbred Horse of the Year as well as Champion Older Male in Illinois. Owned by George Bunn's Quarter B Farm and trained by Noel Hickey, the five-year-old defined one of the proudest moments in Illinois thoroughbred breeding history with a victory in the \$2 million Breeders' Cup Turf on November 7th at Churchill Downs. In 1998 he won six of 10 starts and earned more than \$1.8 million in purses.

The 1998 Illinois Harness Horse of the Year, OHYOUNPRETTYTHING, was trained and driven by Joe Anderson. This three-year-old filly pacer by Sportsmaster is owned by John Leahy of Westchester, Illinois, Michael Neal of Bourbonnais, Illinois, and trainer Joe Anderson of Crete, Illinois. She won 13 of her 17 starts in 1998, earning \$608,015. In her career, she won 25 of 32 starts and \$866,598. Among her victories were the \$180,000 American-National at Balmoral Park, where she set a new stakes record of 1:50 4/5, and the \$276,750 final of the Nadia Lobell at Garden State Park.

At its September 22nd hearing for the allocation of 1999 race dates, the Board awarded all upstate thoroughbred racing dates to National Jockey Club and Hawthorne Race Course. National Jockey Club will operate their meet at Hawthorne under a six month lease. The traditional Sportsman's stakes schedule, 17 races with a combined value of \$2.1 million, was moved to Hawthorne. With respect to the 1999 upstate harness schedule, Maywood and Balmoral will conduct race meets identical to their 1998 schedules.

DUTIES OF THE ILLINOIS RACING BOARD

The Illinois Racing Board consists of nine members appointed to six year terms by the Governor with the advise and consent of the Senate. The Board is responsible for enforcement of the statute governing horse racing in Illinois known as the Illinois Horse Racing Act.

Each year the Board issues racing licenses and establishes a racing schedule for each of the state's operating racetracks, both thoroughbred and harness. The race date allocation process involves an assessment of each racetrack's application for a racing license in view of the best interest of Illinois racing and such factors as the racetrack's facilities and accommodations for the public, the tax revenues to be generated for the state from various race meets, the extent of promotional and marketing activities, the character, fitness, reputation and integrity of the racetrack's owners and operators, and each racetrack's compliance with affirmative action plans.

Off-track or "OTB" licenses are issued by the Board on an annual basis. Each racetrack is entitled to receive up to six OTB licenses, except Fairmount Park which is entitled to seven such licenses. An off-track facility may not be located within 500 feet of any church, school or residence and must be located within 90 miles of the applicant's racetrack (135 miles for downstate tracks). The Board granted 20 off-track licenses in calendar year 1998. Additionally, all Illinois racetracks are entitled to accept intertrack simulcast wagers when they are not conducting live racing.

The Board is responsible for the audit of all racing revenues and receipts, and for the

collection and disbursement of all fees and taxes from racing. The Board employs parimutuel auditors at each racetrack to ensure that all collections and disbursements are made correctly and in a timely fashion in accordance with the provisions of the Illinois Horse Racing Act.

It is the Board's responsibility to ensure the honesty and integrity of all horse races conducted in Illinois. All racing participants including jockeys, harness drivers, trainers, grooms, owners, outriders, pony persons, feed vendors, concessionaires, veterinarians, exercise persons, blacksmiths, agents and others whose work is conducted at Illinois racetracks must be licensed by the Board each year. The licensing process involves a complete criminal background check, a review of the applicant's prior racing record and financial history, an assessment of the applicant's character and fitness, and a determination of the applicant's competency to perform the duties for which the license is sought. Once issued, a license may be suspended or revoked by the Board for any just cause.

Each race conducted in Illinois is observed by at least three stewards and several patrol judges, all of whom have extensive racing experience. The stewards' viewing stand is located near the finish line of each racetrack and is equipped with several television monitors to permit a viewing of multiple angles of each race. The stewards observe the races both for acts of interference, which would cause a disqualification, and for attempts to fraudulently manipulate the outcome, which would result in the permanent suspensions of any parties involved.

All winning horses and others selected at the discretion of the stewards are required to provide a urine and blood sample for purpose of testing for illegal substances. The Board employs veterinarians at each track to supervise the collection of blood and urine at designated post-race detention barns. Following each race program, blood and urine samples are sent to the Board's state-of-the-art forensic laboratory located in Chicago.

Pre-race saliva tests are also conducted by the Board. The samples are collected on a random basis in the paddock or saddling area before each race.

Each horse entered to race must be in a security stall at least two hours prior to its post-time, and must be attended by the trainer or the trainer's delegate. The entire barn area is closely monitored by the Board's security staff as well as security guards employed by

the racetrack. Illinois State Police officers provide additional security and investigative services for the Board.

To ensure that horses participating in the races are the same as those entered and listed in the official program, the Board security staff identifies each horse in each race by registered lip tattoo or freeze brand as the horse arrives in the paddock. Prior to each race, every horse is examined by an official veterinarian to ensure that it is physically sound and not medically incapable of giving its best effort.

The Board employs approximately 120 employees and has an annual operating budget of approximately \$6 million. The Board's administrative staff and central office are located at the James R. Thompson Center in downtown Chicago

YEAR	ILLINOIS HANDLE	STATE REVENUE	PURSES DISTRIBUTED
1980	1,004,896,061	70,209,784	71,989,067
1981	1,038,061,869	72,573,515	75,835,950
1982	972,684,613	67,512,158	74,093,871
1983	964,058,574	66,474,866	73,485,330
1984	1,018,165,679	64,564,548	76,728,985
1985	923,234,631	60,599,368	72,224,237
1986	838,346,834	51,462,300	68,969,980
1987	964,637,340	57,096,894	78,996,744
1988	1,005,631,974	46,308,994	78,266,712
1989	1,193,202,530	43,289,387	94,392,895
1990	1,252,368,115	45,723,937	95,887,189
1991	1,248,161,065	46,318,927	93,065,342
1992	1,290,919,614	44,744,193 *	92,864,207
1993	1,282,020,262	47,571,875	90,565,845
1994	1,238,762,950	46,624,337	89,668,003
1995	1,201,999,292	44,529,168	90,705,636
1996	1,232,867,396	45,758,661	95,607,445
1997	1,180,033,714	45,133,914	87,984,889
1998	1,087,061,250	42,072,401	84,446,511

* Over \$3 million in uncashed tickets not submitted in 1992

LABORATORY

During 1998, The Illinois Racing Board Laboratory conducted one of the most comprehensive equine drug testing programs in the nation. Extensive use of automated testing equipment allowed the laboratory to expand testing to upwards of 75 Enzyme Linked Immunosorbent Assay (ELISA) tests per sample. This enhanced the capabilities to detect and identify a great variety of prohibited substances. Using procedures developed at the laboratory, Illinois was the first in the country to identify and report the tranquilizer Romifidine.

Additionally, the laboratory expanded its controlled medication program in 1998 with the addition of a routine total CO₂ blood test to regulate the prohibited practice of "milkshaking" race horses. "Milkshaking" is the oral dosing of horses with sodium bicarbonate for improving racing performance. In response to the perception of the potential abuse of sodium bicarbonate in racing, the

Board initiated new rules in January 1998 establishing TCO₂ threshold levels in the post race blood of racing participants. The laboratory screened over 9,000 bloods for TCO₂ concentrations and reported three violations of the established threshold levels in the first year of the program. With the initiation of the TCO₂ program, each horse blood sample in Illinois is now tested for threshold levels of Phenylbutazone, Furosemide and TCO₂. Illinois is only one of three official racing laboratories in the country that routinely conduct quantitative testing levels on all three substances.

The Laboratory continued participation in the International Association of Racing Commissioners Quality Assurance Program and in the International Proficiency Testing Program conducted by the Association of Official Racing Chemists, maintaining a perfect score on all blinds and proficiencies in 1998.



1998 LABORATORY TEST SAMPLES

POST RACE	URINE	BLOOD	TOTAL
THOROUGHBRED	4,338	4,465	8,803
HARNESS	6,417	6,726	13,143
TOTAL	10,755	11,191	21,946

PROHIBITED DRUG POSITIVES	
THOROUGHBRED	11
HARNESS	15
TOTAL DRUG POSITIVES	26

PHENYLBUTAZONE VIOLATIONS	
THOROUGHBRED OVERAGES	145
HARNESS OVERAGES	67
TOTAL OVERAGES	212

LASIX VIOLATIONS	
THOROUGHBRED OVERAGES	14
HARNESS OVERAGES	2
TOTAL OVERAGES	16

TCO2 VIOLATIONS	
THOROUGHBRED OVERAGES	0
HARNESS OVERAGES	3
TOTAL OVERAGES	3

PRE-RACE TESTING	SALIVA COCAINE POSITIVES
THOROUGHBRED	2
HARNESS	2
TOTAL	4

ILLINOIS RACING BOARD
STATEMENT OF SOURCE AND ALLOCATION OF REVENUE
FOR THE 1998 RACING YEAR

SOURCE OF REVENUE:	
Application and License Fees of Racing Associations.....	\$ 117,465
Admission Taxes.....	\$ 124,939
Privilege Tax on Pari-Mutuel Wagering*.....	\$ 25,023,022
H.R.T.A. Tax on Pari-Mutuel Wagering.....	\$ 5,662,323
Breakage from Pari-Mutuel Wagering.....	\$ 5,886,281
Licensing of Racing Personnel.....	\$ 264,504
Fingerprint Fees.....	\$ 126,490
Uncashed Pari-Mutuel Tickets (1996).....	\$ 4,762,668
Horsemen's Fines.....	\$ 96,687
Miscellaneous Sources.....	\$ 8,022
TOTAL STATE REVENUES RECEIVED	\$ 42,072,401
2% of OTB Handle to City and County	\$ 11,324,646
City (Chicago) OTB Admission Tax	\$ 882,275
On Track City Admission Tax	\$ 42,601
County Commingling Tax (2.5% of Commission)	\$ 301,386
Intertrack Surcharge to County (20 %)	\$ 745,263
TOTAL LOCAL GOVERNMENT REVENUES RECEIVED	\$ 13,296,172
TOTAL REVENUES RECEIVED	\$ 55,368,573

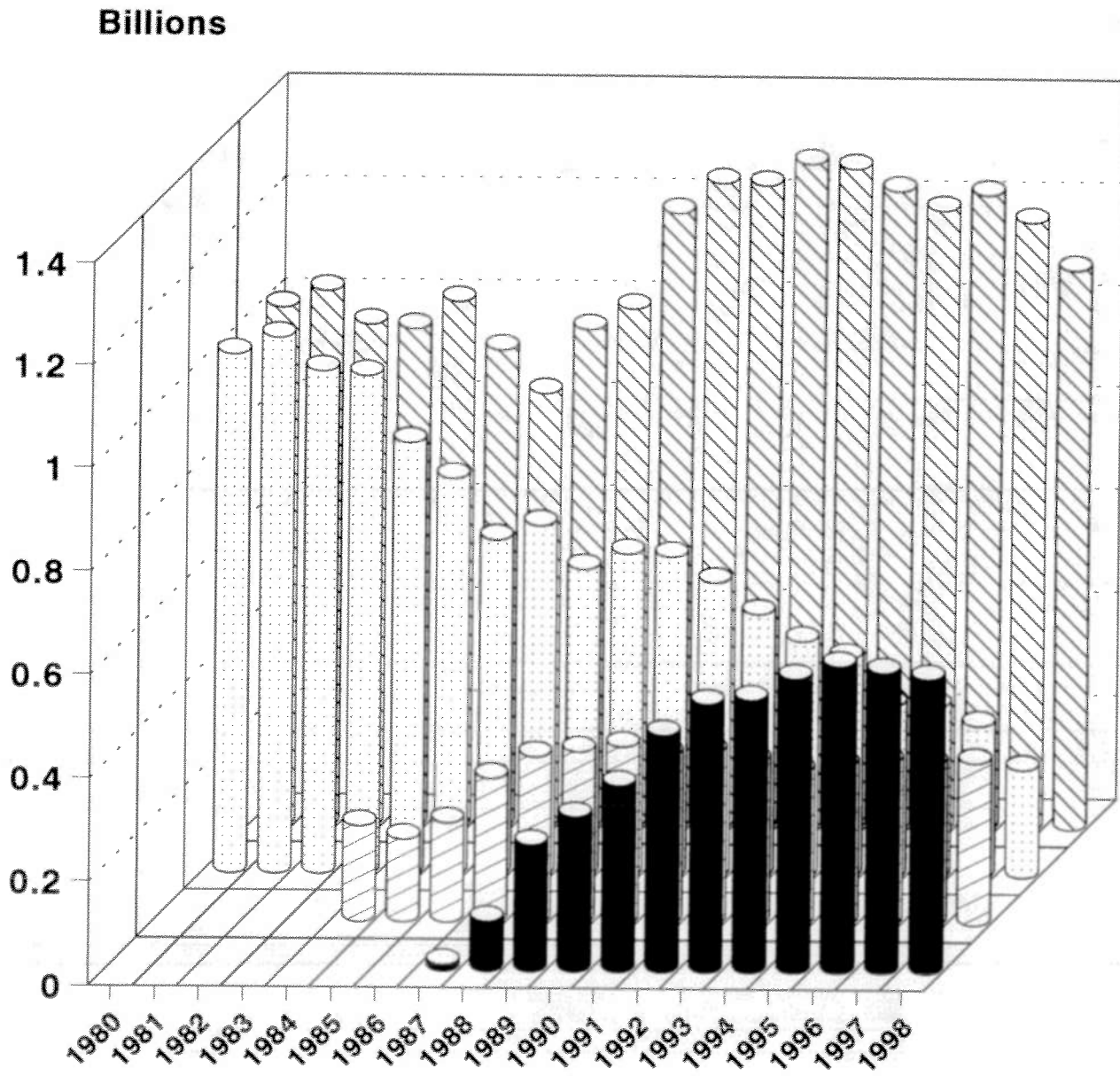
ALLOCATION OF REVENUE:	
General Revenue Fund.....	\$ 3,590,385
Veteran's Rehabilitation Fund.....	\$ 4,762,668
Agricultural Premium Fund.....	\$ 12,511,511
Metropolitan Exposition, Auditorium and Office Building Fund.....	\$ 8,632,943
Fair and Exposition Fund.....	\$ 85,950
Build Illinois Fund.....	\$ 1,665,662
Horse Racing Tax Allocation Fund.....	\$ 5,006,872
HRTA excess pursuant to Section 5/26(h)(11)(B).....	\$ 655,451
Fingerprint License Fund.....	\$ 126,490
Illinois Standardbred Breeders Fund.....	\$ 621,675
Illinois Thoroughbred Breeders Fund.....	\$ 1,469,655
Race Track Improvement Fund.....	\$ 2,943,141
TOTAL STATE REVENUES ALLOCATED.....	\$ 42,072,401
To Cities	\$ 6,587,199
To Counties	\$ 6,708,972
TOTAL LOCAL GOVERNMENT REVENUES ALLOCATED.....	\$ 13,296,172
TOTAL REVENUES ALLOCATED.....	\$ 55,368,573

* Privilege Tax includes \$ 1,040,470 when tracks export their signal out to other states and the State receives 7.5% of the track's commission.

**ILLINOIS RACING BOARD
STATEMENT OF CASH DISBURSEMENTS
FOR THE 1998 RACING YEAR**

	GENERAL ADMINISTRATION	SUPERVISION OF RACE MEETS	LABORATORY	TOTAL
Salary Expenses, including expense of Retirement and Social Security.....	1,222,321	2,613,264	715,330	4,550,915
Contractual Services: Freight, Repairs, Rentals, Postage, Professional Services, etc	154,305	42,828	429,193	626,326
Hearing Officers.....	12,100	0	0	12,100
Travel Expenses.....	32,794	30,294	1,622	64,710
Commodities: Office Supplies, Laboratory and Veterinarian Supplies, Repair Parts, etc.	12,429	20,810	414,101	447,340
Printing.....	7,564	3,294	9,560	20,418
Equipment.....	29,805	74,554	195,073	299,432
Telecommunications.....	84,945	0	5,955	90,900
Operating Automotive Equipment.....	8,000	2,525	0	10,525
Refunds.....	0	300	0	300
Total Operating Expenses	1,564,263	2,787,869	1,770,834	6,122,966
Payments to Racing Associations, of moneys held in Trust, for Improvements to Race Track Facilities	2,834,473	0	0	2,834,473
Total 1998 Disbursements	4,398,736	2,787,869	1,770,834	8,957,439

1980 - 1998 ILLINOIS HANDLES



OFF TRACK
 INTERTRACK
 ON TRACK
 TOTAL HANDLE

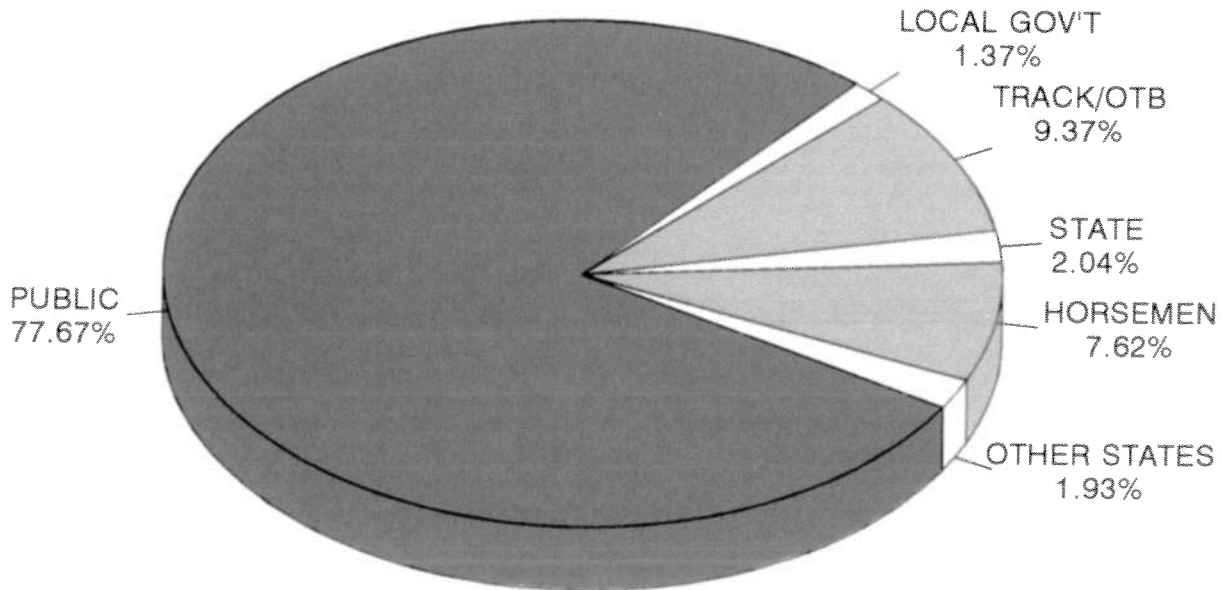
NUMBER OF PARLORS

1987=2, 1988=5, 1989=8, 1990=9, 1991=11, 1992=20
 1993=21, 1994=23, 1995=23, 1996=22, 1997=22, 1998=20

1980 - 1998 ILLINOIS HANDLE TOTALS						
	ON TRACK	INTERTRACK	OFF TRACK	TOTAL		
	THOROUGHBRED	THOROUGHBRED	THOROUGHBRED	THOROUGHBRED MEETS		
1980	504,300,802	0	0	504,300,802	1980	
1981	536,604,635	0	0	536,604,635	1981	
1982	496,698,530	0	0	496,698,530	1982	
1983	483,102,888	0	0	483,102,888	1983	
1984	439,580,028	131,402,659	0	570,982,687	1984	
1985	413,499,578	107,756,838	0	521,256,416	1985	
1986	336,067,733	117,587,272	0	453,655,005	1986	
1987	356,421,707	194,440,313	6,491,923	557,353,943	1987	
1988	300,440,988	210,116,491	52,217,122	562,774,601	1988	
1989	362,027,974	204,424,200	134,256,244	700,708,418	1989	
1990	358,258,669	205,490,935	157,175,600	720,925,204	1990	
1991	337,354,770	181,590,802	178,797,671	697,743,243	1991	
1992	311,469,954	168,456,647	219,595,842	699,522,443	1992	
1993	285,304,997	163,196,102	251,089,094	699,590,193	1993	
1994	269,292,713	154,548,452	257,743,541	681,584,706	1994	
1995	208,971,670	161,026,595	284,072,667	654,070,932	1995	
1996	224,480,978	165,164,793	307,428,219	697,073,990	1996	
1997	203,602,521	165,229,200	310,108,794	678,940,515	1997	
1998	145,599,880	191,893,259	339,166,726	676,659,865	1998	
	ON TRACK	INTERTRACK	OFF TRACK	TOTAL		
	HARNESS	HARNESS	HARNESS	HARNESS MEETS		
1980	500,595,259	0	0	500,595,259	1980	
1981	501,457,234	0	0	501,457,234	1981	
1982	475,986,083	0	0	475,986,083	1982	
1983	480,955,686	0	0	480,955,686	1983	
1984	393,772,427	53,410,565	0	447,182,992	1984	
1985	350,445,586	51,532,629	0	401,978,215	1985	
1986	310,575,635	74,116,194	0	384,691,829	1986	
1987	317,966,134	83,969,761	5,347,502	407,283,397	1987	
1988	289,706,937	110,485,223	42,665,213	442,857,373	1988	
1989	258,603,812	125,921,999	107,968,301	492,494,112	1989	
1990	256,855,703	134,948,222	139,638,986	531,442,911	1990	
1991	228,205,387	142,874,593	179,337,842	550,417,822	1991	
1992	193,087,205	162,203,257	236,106,709	591,397,171	1992	
1993	167,541,086	150,389,103	264,499,880	582,430,069	1993	
1994	151,493,533	139,555,386	266,129,325	557,178,244	1994	
1995	121,047,072	145,351,015	281,530,273	547,928,360	1995	
1996	104,102,288	148,996,834	282,694,284	535,793,406	1996	
1997	88,580,572	144,422,036	268,090,591	501,093,199	1997	
1998	62,378,668	120,957,134	227,065,583	410,401,385	1998	
	ON TRACK	INTERTRACK	OFF TRACK	TOTAL		
	ALL RACING	ALL RACING	ALL RACING	ALL RACING MEETS		
1980	1,004,896,061	0	0	1,004,896,061	1980	
1981	1,038,061,869	0	0	1,038,061,869	1981	
1982	972,684,613	0	0	972,684,613	1982	
1983	964,058,574	0	0	964,058,574	1983	
1984	833,352,455	184,813,224	0	1,018,165,679	1984	
1985	763,945,164	159,289,467	0	923,234,631	1985	
1986	646,643,368	191,703,466	0	838,346,834	1986	
1987	674,387,841	278,410,074	11,839,425	964,637,340	1987	
1988	590,147,925	320,601,714	94,882,335	1,005,631,974	1988	
1989	620,631,786	330,346,199	242,224,545	1,193,202,530	1989	
1990	615,114,372	340,439,157	296,814,586	1,252,368,115	1990	
1991	565,560,157	324,465,395	358,135,513	1,248,161,065	1991	
1992	504,557,159	330,659,904	455,702,551	1,290,919,614	1992	
1993	452,846,083	313,585,205	515,588,974	1,282,020,262	1993	
1994	420,786,246	294,103,838	523,872,866	1,238,762,950	1994	
1995	330,018,742	306,377,610	565,602,940	1,201,999,292	1995	
1996	328,583,266	314,161,627	590,122,503	1,232,867,396	1996	
1997	292,183,093	309,651,236	578,199,385	1,180,033,714	1997	
1998	207,978,548	312,850,393	566,232,309	1,087,061,250	1998	

1998 DISBURSEMENT OF ILLINOIS HANDLE

1998 Illinois Handle	<i>1,087,061,250</i>	Track/OTB	Horsemen	State	Local Gov't	Public	Other States
Track Commission	<i>93,374,131</i>	93,374,131					
Purses Earned	<i>77,589,316</i>		77,589,316				
Privilege Tax	<i>23,982,552</i>			23,982,552			
HRTA Tax	<i>5,006,872</i>			2,145,802	2,861,070		
HRTA Excess	<i>655,451</i>	327,726	327,726				
Out-of-State Fee (3%)	<i>20,991,284</i>						20,991,284
Public Pool	<i>865,461,644</i>					865,461,644	
Breakage	<i>5,886,281</i>	2,943,141		2,943,141		(5,886,281)	
OnTrack Surcharge	<i>478,440</i>	478,440				(478,440)	
ITW Surcharge	<i>3,726,316</i>	1,490,526	1,490,526		745,263	(3,726,316)	
OTB Surcharge	<i>11,019,064</i>	(305,582)			11,324,646	(11,019,064)	
Recapture	<i>6,894,623</i>	6,894,623		(6,894,623)			
RICF Charity	<i>750,000</i>	(750,000)	750,000				
Breeders Awards	<i>2,624,297</i>	(2,624,297)	2,624,297				
TOTAL		101,828,707	82,781,865	22,176,872	14,930,979	844,351,543	20,991,284
		9.37%	7.62%	2.04%	1.37%	77.67%	1.93%
Out-of State Handle on Illinois Races	<i>455,011,181</i>						
Simulcast Fee (3%)	<i>13,650,335</i>	6,142,651	6,142,651	1,023,775	341,258		(13,650,335)
GRAND TOTALS		107,971,358	88,924,516	23,200,647	15,272,237	844,351,543	7,340,948



ILLINOIS MONTHLY HANDLE COMPARISON 1996, 1997, 1998

LIVE AND SIMULCAST HANDLE COMBINED

	1996	1997	1998	96 to 97 +/- %	97 to 98 +/- %
JANUARY	82,734,383	79,963,105	72,064,324	-3%	-10%
FEBRUARY	92,546,596	89,995,153	81,062,664	-3%	-10%
MARCH	110,878,671	106,870,737	96,703,149	-4%	-10%
APRIL	101,968,449	98,958,292	96,418,741	-3%	-3%
MAY	115,669,697	113,339,294	106,077,737	-2%	-6%
JUNE	110,308,933	98,150,306	92,279,841	-11%	-6%
JULY	115,398,848	107,473,296	96,683,252	-7%	-10%
AUGUST	119,643,875	114,377,969	97,150,933	-4%	-15%
SEPTEMBER	97,555,146	93,609,774	84,421,840	-4%	-10%
OCTOBER	97,850,801	94,190,775	94,189,260	-4%	-0%
NOVEMBER	97,300,505	95,039,267	94,597,874	-2%	-0%
DECEMBER	91,011,492	88,065,746	75,411,635	-3%	-14%
TOTAL	1,232,867,396	1,180,033,714	1,087,061,250	-4%	-8%

LIVE ILLINOIS RACES ONLY

	1996	1997	1998	96 to 97 +/- %	97 to 98 +/- %
JANUARY	40,599,017	34,707,247	4,530,404	-15%	-87%
FEBRUARY	43,047,851	36,851,753	14,841,426	-14%	-60%
MARCH	57,191,588	45,088,681	34,025,673	-21%	-25%
APRIL	55,727,733	46,918,889	39,206,402	-16%	-16%
MAY	61,674,186	52,490,227	43,420,198	-15%	-17%
JUNE	60,049,947	45,377,750	36,442,399	-24%	-20%
JULY	66,932,000	53,593,867	42,164,143	-20%	-21%
AUGUST	67,591,609	58,754,230	42,110,354	-13%	-28%
SEPTEMBER	53,651,760	47,107,582	36,930,229	-12%	-22%
OCTOBER	50,243,312	46,414,801	39,244,711	-8%	-15%
NOVEMBER	53,938,994	43,764,574	37,013,193	-19%	-15%
DECEMBER	49,950,894	42,639,727	17,422,660	-15%	-59%
TOTAL	660,598,891	553,709,328	387,351,792	-16%	-30%

SIMULCAST RACES ONLY

	1996	1997	1998	96 to 97 +/- %	97 to 98 +/- %
JANUARY	42,135,366	45,255,858	67,533,920	7%	49%
FEBRUARY	49,498,745	53,143,400	66,221,238	7%	25%
MARCH	53,687,083	61,782,056	62,677,476	15%	1%
APRIL	46,240,716	52,039,403	57,212,339	13%	10%
MAY	53,995,511	60,849,067	62,657,539	13%	3%
JUNE	50,258,986	52,772,556	55,837,442	5%	6%
JULY	48,466,848	53,879,429	54,519,109	11%	1%
AUGUST	52,052,266	55,623,739	55,040,579	7%	-1%
SEPTEMBER	43,903,386	46,502,192	47,491,611	6%	2%
OCTOBER	47,607,489	47,775,974	54,944,549	0%	15%
NOVEMBER	43,361,511	51,274,693	57,584,681	18%	12%
DECEMBER	41,060,598	45,426,019	57,988,975	11%	28%
TOTAL	572,268,505	626,324,386	699,709,458	9%	12%

1998 COMPARISON OF LOCATION HANDLES LIVE ILLINOIS RACING AND SIMULCASTS

LIVE PRGMS	AMOUNT WAGERED	ON TRACK	ON TRACK %	INTER TRACK	INTER TRACK %	OFF TRACK	OFF TRACK %
THOROUGHbred MEETINGS							
114 Hawthorne Race Course	317,226,632	66,671,519	21.0%	91,179,987	28.7%	159,375,126	50.2%
101 National Jockey Club (Sportsman's)	334,285,506	64,320,647	19.2%	97,725,912	29.2%	172,238,947	51.5%
<u>100</u> Ogden-Fairmount	<u>25,147,727</u>	<u>14,607,714</u>	<u>58.1%</u>	<u>2,987,360</u>	<u>11.9%</u>	<u>7,552,653</u>	<u>30.0%</u>
315 THOROUGHbred TOTAL	<u>676,659,865</u>	<u>145,599,880</u>	<u>21.5%</u>	<u>191,893,259</u>	<u>28.4%</u>	<u>339,166,726</u>	<u>50.1%</u>
HARNESs MEETINGS							
186 Balmoral Racing Club	224,680,594	25,786,170	11.5%	73,957,153	32.9%	124,937,271	55.6%
61 Maywood Park Trotting Association	79,865,510	12,814,486	16.0%	21,224,480	26.6%	45,826,544	57.4%
39 Egyptian Trotting Assoc. (Maywood)	42,462,030	7,288,586	17.2%	11,557,412	27.2%	23,616,032	55.6%
<u>39</u> Associates Racing Assoc.(Maywood)	<u>41,163,569</u>	<u>7,313,372</u>	<u>17.8%</u>	<u>10,579,699</u>	<u>25.7%</u>	<u>23,270,498</u>	<u>56.5%</u>
139 Maywood Park (All 3 Meets)	163,491,109	27,416,444	16.8%	43,361,591	26.5%	92,713,074	56.7%
5 Du Quoin State Fair	601,204	303,611	50.5%	121,506	20.2%	176,087	29.3%
6 Springfield State Fair	1,082,387	569,055	52.6%	210,680	19.5%	302,652	28.0%
<u>115</u> Ogden-Fairmount	<u>20,546,091</u>	<u>8,303,388</u>	<u>40.4%</u>	<u>3,306,204</u>	<u>16.1%</u>	<u>8,936,499</u>	<u>43.5%</u>
451 HARNESs TOTAL	<u>410,401,385</u>	<u>62,378,668</u>	<u>15.2%</u>	<u>120,957,134</u>	<u>29.5%</u>	<u>227,065,583</u>	<u>55.3%</u>
766 TOTAL ALL RACING	<u>1,087,061,250</u>	<u>207,978,548</u>	<u>19.1%</u>	<u>312,850,393</u>	<u>28.8%</u>	<u>566,232,309</u>	<u>52.1%</u>

LIVE ILLINOIS RACING ONLY

LIVE PRGMS	AMOUNT WAGERED	ON TRACK	ON TRACK %	INTER TRACK	INTER TRACK %	OFF TRACK	OFF TRACK %
THOROUGHbred MEETINGS							
114 Hawthorne Race Course	104,202,954	38,906,539	37.3%	25,517,935	24.5%	39,778,480	38.2%
101 National Jockey Club (Sportsman's)	82,814,305	31,694,237	38.3%	19,703,874	23.8%	31,416,194	37.9%
<u>100</u> Ogden-Fairmount	<u>24,752,746</u>	<u>14,346,170</u>	<u>58.0%</u>	<u>2,987,360</u>	<u>12.1%</u>	<u>7,419,216</u>	<u>30.0%</u>
315 THOROUGHbred TOTAL	<u>211,770,005</u>	<u>84,946,946</u>	<u>40.1%</u>	<u>48,209,169</u>	<u>22.8%</u>	<u>78,613,890</u>	<u>37.1%</u>
HARNESs MEETINGS							
186 Balmoral Racing Club	97,955,075	19,693,420	20.1%	28,492,700	29.1%	49,768,955	50.8%
61 Maywood Park Trotting Association	24,855,189	6,502,328	26.2%	5,503,412	22.1%	12,849,449	51.7%
39 Egyptian Trotting Assoc. (Maywood)	15,572,591	4,236,569	27.2%	3,512,277	22.6%	7,823,745	50.2%
<u>39</u> Associates Racing Assoc.(Maywood)	<u>15,997,048</u>	<u>4,399,280</u>	<u>27.5%</u>	<u>3,386,659</u>	<u>21.2%</u>	<u>8,211,109</u>	<u>51.3%</u>
139 Maywood Park (All 3 Meets)	56,424,828	15,138,177	26.8%	12,402,348	22.0%	28,884,303	51.2%
5 Du Quoin State Fair	601,204	303,611	50.5%	121,506	20.2%	176,087	29.3%
6 Springfield State Fair	1,082,387	569,055	52.6%	210,680	19.5%	302,652	28.0%
<u>115</u> Ogden-Fairmount	<u>19,518,293</u>	<u>7,701,338</u>	<u>39.5%</u>	<u>3,306,204</u>	<u>16.9%</u>	<u>8,510,751</u>	<u>43.6%</u>
451 HARNESs TOTAL	<u>175,581,787</u>	<u>43,405,601</u>	<u>24.7%</u>	<u>44,533,438</u>	<u>25.4%</u>	<u>87,642,748</u>	<u>49.9%</u>
766 TOTAL ALL RACING	<u>387,351,792</u>	<u>128,352,547</u>	<u>33.1%</u>	<u>92,742,607</u>	<u>23.9%</u>	<u>166,256,638</u>	<u>42.9%</u>

1998 OUT-OF-STATE SIMULCASTS

SIMUL. PRGMS		AMOUNT WAGERED	ON TRACK	ON TRACK %	INTER TRACK	INTER TRACK %	OFF TRACK	OFF TRACK %
THOROUGHBRED MEETINGS								
1,543	Hawthorne Race Course	213,023,678	27,764,980	13.0%	65,662,052	30.8%	119,596,646	56.1%
1,281	THOROUGHBRED SIM.	204,279,221	27,075,105	13.3%	63,058,638	30.9%	114,145,478	55.9%
262	HARNESS SIM.	8,744,457	689,875	7.9%	2,603,414	29.8%	5,451,168	62.3%
1,901	National Jockey Club (Sportsman's)	251,471,201	32,626,410	13.0%	78,022,038	31.0%	140,822,753	56.0%
1,533	THOROUGHBRED SIM.	237,609,737	31,310,805	13.2%	74,033,980	31.2%	132,264,952	55.7%
368	HARNESS SIM.	13,861,464	1,315,605	9.5%	3,988,058	28.8%	8,557,801	61.7%
35	Ogden-Fairmount	394,981	261,544	66.2%	0	0.0%	133,437	33.8%
4	THOROUGHBRED SIM.	277,417	193,581	69.8%	0	0.0%	83,836	30.2%
31	HARNESS SIM.	117,564	67,963	57.8%	0	0.0%	49,601	42.2%
3,479	THOROUGHBRED TOTAL	464,889,860	60,652,934	13.0%	143,684,090	30.9%	260,552,836	56.0%
2,818	THOROUGHBRED SIM.	442,166,375	58,579,491	13.2%	137,092,618	31.0%	246,494,266	55.7%
661	HARNESS SIM.	22,723,485	2,073,443	9.1%	6,591,472	29.0%	14,058,570	61.9%

SIMUL. PRGMS		AMOUNT WAGERED	ON TRACK	ON TRACK %	INTER TRACK	INTER TRACK %	OFF TRACK	OFF TRACK %
HARNESS MEETINGS								
1,856	Balmoral Racing Club	126,725,519	6,092,750	4.8%	45,464,453	35.9%	75,168,316	59.3%
963	THOROUGHBRED SIM.	63,650,467	2,216,724	3.5%	23,561,687	37.0%	37,872,056	59.5%
893	HARNESS SIM.	63,075,052	3,876,026	6.1%	21,902,766	34.7%	37,296,260	59.1%
649	Maywood Park Trotting Association	55,010,321	6,312,158	11.5%	15,721,068	28.6%	32,977,095	59.9%
294	THOROUGHBRED SIM.	25,266,862	2,373,332	9.4%	7,671,774	30.4%	15,221,756	60.2%
355	HARNESS SIM.	29,743,459	3,938,826	13.2%	8,049,294	27.1%	17,755,339	59.7%
344	Egyptian Trotting Assoc. (Maywood)	26,889,439	3,052,017	11.4%	8,045,135	29.9%	15,792,287	58.7%
177	THOROUGHBRED SIM.	16,276,668	1,605,778	9.9%	5,187,104	31.9%	9,483,786	58.3%
167	HARNESS SIM.	10,612,771	1,446,239	13.6%	2,858,031	26.9%	6,308,501	59.4%
314	Associates Racing Assoc. (Maywood)	25,166,521	2,914,092	11.6%	7,193,040	28.6%	15,059,389	59.8%
139	THOROUGHBRED SIM.	14,648,021	1,468,467	10.0%	4,539,341	31.0%	8,640,213	59.0%
175	HARNESS SIM.	10,518,500	1,445,625	13.7%	2,653,699	25.2%	6,419,176	61.0%
1,307	Maywood Park (All 3 Meets)	107,066,281	12,278,267	11.5%	30,959,243	28.9%	63,828,771	59.6%
610	THOROUGHBRED SIM.	56,191,551	5,447,577	9.7%	17,398,219	31.0%	33,345,755	59.3%
697	HARNESS SIM.	50,874,730	6,830,690	13.4%	13,561,024	26.7%	30,483,016	59.9%
81	Ogden-Fairmount	1,027,798	602,050	58.6%	0	0.0%	425,748	41.4%
55	THOROUGHBRED SIM.	867,438	520,422	60.0%	0	0.0%	347,016	40.0%
26	HARNESS SIM.	160,360	81,628	50.9%	0	0.0%	78,732	49.1%
3,244	HARNESS TOTAL	234,819,598	18,973,067	8.1%	76,423,696	32.5%	139,422,835	59.4%
1,628	THOROUGHBRED SIM.	120,709,456	8,184,723	6.8%	40,959,906	33.9%	71,564,827	59.3%
1,616	HARNESS SIM.	114,110,142	10,788,344	9.5%	35,463,790	31.1%	67,858,008	59.5%
6,723	TOTAL ALL RACING	699,709,458	79,626,001	11.4%	220,107,786	31.5%	399,975,671	57.2%
4,446	THOROUGHBRED SIM.	562,875,831	66,764,214	11.9%	178,052,524	31.6%	318,059,093	56.5%
2,277	HARNESS SIM.	136,833,627	12,861,787	9.4%	42,055,262	30.7%	81,916,578	59.9%

Note: Included in the Thoroughbred Totals are 265 Quarterhorse programs for a total of \$20,307,835.

ON TRACK

	THOROUGHBRED MEETS	HARNESS MEETS	ALL MEETS
Live Programs Raced	315	451	766
Total Live + Dark Days	464	488	952
Live Races Run	3,010	4,838	7,848
Attendance	958,859	548,268	1,507,127

Illinois Handle on Illinois Races	84,946,946	43,405,601	128,352,547
Illinois Handle on Out-of-State Races on Live Days	41,355,136	17,555,803	58,910,939
Combined Illinois Handle on Live Days	126,302,082	60,961,404	187,263,486
Illinois Handle on Out-of-State Races on Dark Days	19,297,798	1,417,264	20,715,062
Combined Illinois Handle on Live + Dark Days	145,599,880	62,378,668	207,978,548
Percentage of Total Combined Illinois Handle	70.01%	29.99%	
Ill. Handle on Out-of-State Races on Live + Dark Days	60,652,934	18,973,067	79,626,001

Average Illinois Handle on Illinois Races	269,673	96,243	167,562
Avg. Ill. Handle on Out-of-State Races on Live Days	131,286	38,926	76,907
Average Combined Illinois Handle on Live Days	400,959	135,169	244,469
Avg. Ill. Handle on Out-of-State Races on Dark Days	129,515	38,304	111,371
Avg. Combined Illinois Handle on Live + Dark Days	313,793	127,825	218,465
Avg. Ill. Handle on OutofState Races on Live+Dark Days	130,718	38,879	163,168

Combined Illinois Handle	145,599,880	62,378,668	207,978,548
-Commission (Take Out)	28,653,936	12,905,028	41,558,964
Track Commission	11,145,636	5,329,827	16,475,463
Purses Earned	11,145,636	5,329,827	16,475,463
Out-of-State Simulcast Fee (3%)	1,819,588	569,192	2,388,780
Privilege Tax	4,543,076	1,676,182	6,219,258
Horse Racing Tax Allocation	0	0	0
Public Pool	116,945,944	49,473,640	166,419,584
-Breakage	918,895	398,324	1,317,219
Race Track Improvement Fund	459,448	199,162	658,610
Breakage to General Revenue	459,448	199,162	658,610
-Surcharge	117,994	360,446	478,440
Payout to Public	115,909,055	48,714,870	164,623,925
Privilege Tax	4,543,076	1,676,182	6,219,258
Breakage	918,895	398,324	1,317,219
Horse Racing Tax Allocation	0	0	0
License Fee	42,490	56,480	98,970
License Fee - Daily Handle	4,900	100	5,000
Admission Tax	44,045	19,857	63,902
Uncashed Tickets (1996)*	<u>596,665</u>	<u>360,164</u>	<u>956,829</u>
TOTAL REVENUE TO STATE	5,873,137	2,344,019	8,217,156
AVG. DAILY STATE REVENUE	18,645	5,197	10,727

INTERTRACK

THOROUGHBRED MEETS	HARNESS MEETS	ALL MEETS
1,575	2,266	3,841 Live Programs Raced
N/A	N/A	N/A Total Live + Dark Days
N/A	N/A	N/A Live Races Run
451,690	415,325	867,015 Attendance

48,209,169	44,533,438	92,742,607 Illinois Handle on Illinois Races
81,999,422	68,929,264	150,928,686 Illinois Handle on Out-of-State Races on Live Days
130,208,591	113,462,702	243,671,293 Combined Illinois Handle on Live Days
61,684,668	7,494,432	69,179,100 Illinois Handle on Out-of-State Races on Dark Days
191,893,259	120,957,134	312,850,393 Combined Illinois Handle on Live + Dark Days
61.34%	38.66%	Percentage of Total Combined Illinois Handle
143,684,090	76,423,696	220,107,786 Ill. Handle on Out-of-State Races on Live + Dark Days

153,045	98,744	121,074 Average Illinois Handle on Illinois Races
260,316	152,837	197,035 Avg. Ill. Handle on Out-of-State Races on Live Days
413,361	251,580	318,109 Average Combined Illinois Handle on Live Days
413,991	202,552	371,931 Avg. Ill. Handle on Out-of-State Races on Dark Days
413,563	247,863	328,624 Avg. Combined Illinois Handle on Live + Dark Days
309,664	156,606	231,206 Avg. Ill. Handle on OutofState Races on Live+Dark Days

191,893,259	120,957,134	312,850,393 Combined Illinois Handle
38,882,621	25,001,902	63,884,523 -Commission (Take Out)
15,374,806	10,128,386	25,503,192 Track Commission
15,374,806	10,128,386	25,503,192 Purses Earned
4,310,523	2,292,711	6,603,234 Out-of-State Simulcast Fee (3%)
3,822,486	2,452,419	6,274,905 Privilege Tax
0	0	0 Horse Racing Tax Allocation
153,010,638	95,955,232	248,965,870 Public Pool
1,007,496	698,989	1,706,485 -Breakage
503,748	349,495	853,243 Race Track Improvement Fund
503,748	349,495	853,243 Breakage to General Revenue
2,294,471	1,431,845	3,726,316 -Surcharge
149,708,671	93,824,398	243,533,069 Payout to Public
3,822,486	2,452,419	6,274,905 Privilege Tax
1,007,496	698,989	1,706,485 Breakage
0	0	0 Horse Racing Tax Allocation
0	0	0 License Fee
0	0	0 License Fee - Daily Handle
37,355	23,682	61,037 Admission Tax
<u>654,819</u>	<u>697,186</u>	<u>1,352,006</u> Uncashed Tickets (1996)*
5,218,258	3,548,708	8,766,967 TOTAL REVENUE TO STATE
16,566	7,869	11,445 AVG. DAILY STATE REVENUE

* Includes uncashed tickets remitted from meets in 1996 that did not operate in 1998

OFF TRACK

	THOROUGHBRED MEETS	HARNESS MEETS	ALL MEETS
Live Programs Raced	6,298	9,016	15,314
Total Live + Dark Days	N/A	N/A	N/A
Live Races Run	N/A	N/A	N/A
Attendance	N/A	N/A	N/A

Illinois Handle on Illinois Races	78,613,890	87,642,748	166,256,638
Illinois Handle on Out-of-State Races on Live Days	145,075,282	124,794,428	269,869,710
Combined Illinois Handle on Live Days	223,689,172	212,437,176	436,126,348
Illinois Handle on Out-of-State Races on Dark Days	115,477,554	14,628,407	130,105,961
Combined Illinois Handle on Live + Dark Days	339,166,726	227,065,583	566,232,309
Percentage of Total Combined Illinois Handle	59.90%	40.10%	
Ill. Handle on Out-of-State Races on Live + Dark Days	260,552,836	139,422,835	399,975,671

Average Illinois Handle on Illinois Races	249,568	194,330	217,045
Avg. Ill. Handle on Out-of-State Races on Live Days	460,556	276,706	352,310
Average Combined Illinois Handle on Live Days	710,124	471,036	569,356
Avg. Ill. Handle on Out-of-State Races on Dark Days	775,017	395,362	699,494
Avg. Combined Illinois Handle on Live + Dark Days	730,963	465,298	594,782
Avg. Ill. Handle on OutofState Races on Live+Dark Days	561,536	285,703	420,143

Combined Illinois Handle	339,166,726	227,065,583	566,232,309
-Commission (Take Out)	68,733,430	47,422,689	116,156,119
Track Commission	29,059,572	22,335,904	51,395,476
Purses Earned	21,724,936	13,885,725	35,610,661
Out-of-State Simulcast Fee (3%)	7,816,585	4,182,685	11,999,270
Privilege Tax	6,740,669	4,747,720	11,488,389
Horse Racing Tax Allocation	3,391,668	2,270,655	5,662,323
Public Pool	270,433,296	179,642,894	450,076,190
-Breakage	1,698,611	1,163,966	2,862,577
Race Track Improvement Fund	849,306	581,983	1,431,289
Breakage to General Revenue	849,306	581,983	1,431,289
-Surcharge	6,600,780	4,418,284	11,019,064
Payout to Public	262,133,905	174,060,644	436,194,549
Privilege Tax	6,740,669	4,747,720	11,488,389
Breakage	1,698,611	1,163,966	2,862,577
Horse Racing Tax Allocation	3,391,668	2,270,655	5,662,323
License Fee	0	0	0
License Fee - Daily Handle	0	0	0
Admission Tax	0	0	0
Uncashed Tickets (1996)*	<u>1,176,749</u>	<u>1,277,084</u>	<u>2,453,833</u>
TOTAL REVENUE TO STATE	12,461,565	8,866,879	21,328,444
AVG. DAILY STATE REVENUE	39,561	19,660	27,844

ALL LOCATIONS

THOROUGHBRED MEETS	HARNESS MEETS	ALL MEETS	
8,188	11,733	19,921	Live Programs Raced
464	488	952	Total Live + Dark Days
3,010	4,838	7,848	Live Races Run
1,410,549	963,593	2,374,142	Attendance
49,904,435	34,542,076	84,446,511	Purse Distribution
211,770,005	175,581,787	387,351,792	Illinois Handle on Illinois Races
268,429,840	211,279,495	479,709,335	Illinois Handle on Out-of-State Races on Live Days
480,199,845	386,861,282	867,061,127	Combined Illinois Handle on Live Days
196,460,020	23,540,103	220,000,123	Illinois Handle on Out-of-State Races on Dark Days
676,659,865	410,401,385	1,087,061,250	Combined Illinois Handle on Live + Dark Days
62.25%	37.75%		Percentage of Total Combined Illinois Handle
464,889,860	234,819,598	699,709,458	Ill. Handle on Out-of-State Races on Live + Dark Days
278,141,855	176,869,326	455,011,181	Out-of-State Handle (Commingled) on Illinois Programs
758,341,700	563,730,608	1,322,072,308	Total Meet Handle on Live Days
954,801,720	587,270,711	1,542,072,431	Total Meet Handle on Live + Dark Days
672,286	389,317	505,681	Average Illinois Handle on Illinois Races
852,158	468,469	626,252	Avg. Ill. Handle on Out-of-State Races on Live Days
1,524,444	857,786	1,131,934	Average Combined Illinois Handle on Live Days
1,318,524	636,219	1,182,796	Avg. Ill. Handle on Out-of-State Races on Dark Days
1,458,319	840,986	1,141,871	Avg. Combined Illinois Handle on Live + Dark Days
1,001,918	481,188	734,989	Avg. Ill. Handle on OutofState Races on Live+Dark Days
882,990	392,171	594,009	Avg. Out-of-State Handle (Commingled) on Illinois Programs
2,407,434	1,249,957	1,725,943	Average Total Meet Handle on Live Days
2,057,762	1,203,424	1,619,824	Average Total Meet Handle on Live + Dark Days
676,659,865	410,401,385	1,087,061,250	Combined Illinois Handle
136,269,987	85,329,619	221,599,606	-Commission (Take Out)
55,580,014	37,794,117	93,374,131	Track Commission
48,245,378	29,343,938	77,589,316	Purses Earned
13,946,696	7,044,588	20,991,284	Out-of-State Simulcast Fee (3%)
15,106,231	8,876,321	23,982,552	Privilege Tax
3,391,668	2,270,655	5,662,323	Horse Racing Tax Allocation
540,389,878	325,071,766	865,461,644	Public Pool
3,625,002	2,261,279	5,886,281	-Breakage
1,812,501	1,130,640	2,943,141	Race Track Improvement Fund
1,812,501	1,130,640	2,943,141	Breakage to General Revenue
9,013,245	6,210,575	15,223,820	-Surcharge
527,751,631	316,599,912	844,351,543	Payout to Public
15,106,231	8,876,321	23,982,552	Privilege Tax
3,625,002	2,261,279	5,886,281	Breakage
3,391,668	2,270,655	5,662,323	Horse Racing Tax Allocation
42,490	56,480	98,970	License Fee
4,900	100	5,000	License Fee - Daily Handle
81,400	43,539	124,939	Admission Tax
2,428,234	2,334,434	4,762,668	Uncashed Tickets (1996)*
23,552,961	14,759,606	38,312,567	TOTAL REVENUE TO STATE
74,771	32,726	50,016	AVG. DAILY STATE REVENUE

* Includes uncashed tickets remitted from meets in 1996 that did not operate in 1998

**1998 COMPARISON OF WAGERING POOLS
COMBINED LIVE RACING AND SIMULCASTS**

% THOROUGHBRED MEETS		TOTAL HANDLE	ON TRACK	%	INTER TRACK	%	OFF TRACK	%
Hawthorne Race Course								
36.4%	WIN, PLACE AND SHOW	115,346,941	27,664,798	24.0%	31,885,275	27.6%	55,796,868	48.4%
35.1%	2-HORSE	111,393,250	22,562,962	20.3%	31,746,905	28.5%	57,083,383	51.2%
28.5%	3-HORSE	90,486,441	16,443,759	18.2%	27,547,807	30.4%	46,494,875	51.4%
	TOTAL HANDLE	317,226,632	66,671,519	21.0%	91,179,987	28.7%	159,375,126	50.2%
National Jockey Club (Spts)								
37.3%	WIN, PLACE AND SHOW	124,821,771	28,145,782	22.5%	35,965,432	28.8%	60,710,557	48.6%
35.2%	2-HORSE	117,754,032	20,965,459	17.8%	34,059,310	28.9%	62,729,263	53.3%
27.4%	3-HORSE	91,709,703	15,209,406	16.6%	27,701,170	30.2%	48,799,127	53.2%
	TOTAL HANDLE	334,285,506	64,320,647	19.2%	97,725,912	29.2%	172,238,947	51.5%
Ogden-Fairmount								
38.7%	WIN, PLACE AND SHOW	9,731,171	5,899,516	60.6%	1,181,156	12.1%	2,650,499	27.2%
38.1%	2-HORSE	9,587,018	5,287,402	55.2%	1,170,126	12.2%	3,129,490	32.6%
23.2%	3-HORSE	5,829,538	3,420,796	58.7%	636,078	10.9%	1,772,664	30.4%
	TOTAL HANDLE	25,147,727	14,607,714	58.1%	2,987,360	11.9%	7,552,653	30.0%
THOROUGHBRED TOTAL								
36.9%	WIN, PLACE AND SHOW	249,899,883	61,710,096	24.7%	69,031,863	27.6%	119,157,924	47.7%
35.3%	2-HORSE	238,734,300	48,815,823	20.4%	66,976,341	28.1%	122,942,136	51.5%
27.8%	3-HORSE	188,025,682	35,073,961	18.7%	55,885,055	29.7%	97,066,666	51.6%
	TOTAL HANDLE	676,659,865	145,599,880	21.5%	191,893,259	28.4%	339,166,726	50.1%

% HARNESS MEETS		TOTAL HANDLE	ON TRACK	%	INTER TRACK	%	OFF TRACK	%
Balmoral Racing Club								
34.2%	WIN, PLACE AND SHOW	76,894,886	9,693,769	12.6%	26,429,024	34.4%	40,772,093	53.0%
33.2%	2-HORSE	74,497,504	7,766,028	10.4%	24,532,463	32.9%	42,199,013	56.6%
32.6%	3-HORSE	73,288,204	8,326,373	11.4%	22,995,666	31.4%	41,966,165	57.3%
	TOTAL HANDLE	224,680,594	25,786,170	11.5%	73,957,153	32.9%	124,937,271	55.6%
Maywood Park Trot. Assoc.								
34.4%	WIN, PLACE AND SHOW	27,485,965	4,786,632	17.4%	7,751,139	28.2%	14,948,194	54.4%
33.1%	2-HORSE	26,475,395	4,033,468	15.2%	6,834,420	25.8%	15,607,507	59.0%
32.4%	3-HORSE	25,904,150	3,994,386	15.4%	6,638,921	25.6%	15,270,843	59.0%
	TOTAL HANDLE	79,865,510	12,814,486	16.0%	21,224,480	26.6%	45,826,544	57.4%
Egyptian Trotting Assoc.								
35.0%	WIN, PLACE AND SHOW	14,845,240	2,751,738	18.5%	4,262,395	28.7%	7,831,107	52.8%
32.4%	2-HORSE	13,750,286	2,190,223	15.9%	3,712,040	27.0%	7,848,023	57.1%
32.7%	3-HORSE	13,866,504	2,346,625	16.9%	3,582,977	25.8%	7,936,902	57.2%
	TOTAL HANDLE	42,462,030	7,288,586	17.2%	11,557,412	27.2%	23,616,032	55.6%
Associates Racing Assoc.								
34.5%	WIN, PLACE AND SHOW	14,185,223	2,786,277	19.6%	3,665,044	25.8%	7,733,902	54.5%
32.0%	2-HORSE	13,172,682	2,177,627	16.5%	3,391,217	25.7%	7,603,838	57.7%
33.5%	3-HORSE	13,805,664	2,349,468	17.0%	3,523,438	25.5%	7,932,758	57.5%
	TOTAL HANDLE	41,163,569	7,313,372	17.8%	10,579,699	25.7%	23,270,498	56.5%
Maywood Park (All 3 Meets)								
34.6%	WIN, PLACE AND SHOW	56,516,428	10,324,647	18.3%	15,678,578	27.7%	30,513,203	54.0%
32.7%	2-HORSE	53,398,363	8,401,318	15.7%	13,937,677	26.1%	31,059,368	58.2%
32.8%	3-HORSE	53,576,318	8,690,479	16.2%	13,745,336	25.7%	31,140,503	58.1%
	TOTAL HANDLE	163,491,109	27,416,444	16.8%	43,361,591	26.5%	92,713,074	56.7%

HARNESS MEETS (cont'd)		TOTAL HANDLE	ON TRACK	%	INTER TRACK	%	OFF TRACK	%
DuQuoin State Fair								
44.2%	WIN, PLACE AND SHOW	265,774	154,548	58.2%	49,005	18.4%	62,221	23.4%
39.3%	2-HORSE	236,187	102,609	43.4%	52,404	22.2%	81,174	34.4%
16.5%	3-HORSE	99,243	46,454	46.8%	20,097	20.3%	32,692	32.9%
	TOTAL HANDLE	601,204	303,611	50.5%	121,506	20.2%	176,087	29.3%
Springfield State Fair								
38.9%	WIN, PLACE AND SHOW	420,900	243,530	57.9%	79,619	18.9%	97,751	23.2%
40.7%	2-HORSE	440,265	215,016	48.8%	89,583	20.3%	135,666	30.8%
20.4%	3-HORSE	221,222	110,509	50.0%	41,478	18.7%	69,235	31.3%
	TOTAL HANDLE	1,082,387	569,055	52.6%	210,680	19.5%	302,652	28.0%
Ogden-Fairmount								
30.1%	WIN, PLACE AND SHOW	6,184,802	2,356,295	38.1%	1,134,721	18.3%	2,693,786	43.6%
37.5%	2-HORSE	7,705,747	3,037,441	39.4%	1,209,207	15.7%	3,459,099	44.9%
32.4%	3-HORSE	6,655,542	2,909,652	43.7%	962,276	14.5%	2,783,614	41.8%
	TOTAL HANDLE	20,546,091	8,303,388	40.4%	3,306,204	16.1%	8,936,499	43.5%
HARNESS TOTAL								
34.2%	WIN, PLACE AND SHOW	140,282,790	22,772,789	16.2%	43,370,947	30.9%	74,139,054	52.8%
33.2%	2-HORSE	136,278,066	19,522,412	14.3%	39,821,334	29.2%	76,934,320	56.5%
32.6%	3-HORSE	133,840,529	20,083,467	15.0%	37,764,853	28.2%	75,992,209	56.8%
	TOTAL HANDLE	410,401,385	62,378,668	15.2%	120,957,134	29.5%	227,065,583	55.3%
ALL RACING TOTAL								
35.9%	WIN, PLACE AND SHOW	390,182,673	84,482,885	21.7%	112,402,810	28.8%	193,296,978	49.5%
34.5%	2-HORSE	375,012,366	68,338,235	18.2%	106,797,675	28.5%	199,876,456	53.3%
29.6%	3-HORSE	321,866,211	55,157,428	17.1%	93,649,908	29.1%	173,058,875	53.8%
	TOTAL HANDLE	1,087,061,250	207,978,548	19.1%	312,850,393	28.8%	566,232,309	52.1%

		TOTAL HANDLE	ON TRACK	%	INTER TRACK	%	OFF TRACK	%
LIVE ILLINOIS RACING								
35.4%	WIN, PLACE AND SHOW	137,089,043	50,494,381	36.8%	31,477,136	23.0%	55,117,526	40.2%
33.7%	2-HORSE	130,603,657	42,539,698	32.6%	31,660,380	24.2%	56,403,579	43.2%
30.9%	3-HORSE	119,659,092	35,318,468	29.5%	29,605,091	24.7%	54,735,533	45.7%
	TOTAL HANDLE	387,351,792	128,352,547	33.1%	92,742,607	23.9%	166,256,638	42.9%
SIMULCAST RACES								
36.2%	WIN, PLACE AND SHOW	253,093,630	33,988,504	13.4%	80,925,674	32.0%	138,179,452	54.6%
34.9%	2-HORSE	244,408,709	25,798,537	10.6%	75,137,295	30.7%	143,472,877	58.7%
28.9%	3-HORSE	202,207,119	19,838,960	9.8%	64,044,817	31.7%	118,323,342	58.5%
	TOTAL HANDLE	699,709,458	79,626,001	11.4%	220,107,786	31.5%	399,975,671	57.2%

AVERAGE TAKEOUT RATES WHEN SIMULCASTING OUT-OF-STATE RACES

(Based on actual Illinois wagering combinations on out-of-state races)

	WIN, PLACE SHOW	2- HORSE	3- HORSE
ILLINOIS THOROUGHBRED MEETS	16.75%	20.53%	23.94%
ILLINOIS HARNESS MEETS	17.14%	21.09%	24.29%
TOTAL ILLINOIS MEETS	16.88%	20.72%	24.07%

1998 OFF TRACK PARLOR HANDLES

	LIVE ILLINOIS HANDLE	SIMULCAST HANDLE	TOTAL HANDLE	AVERAGE DAILY HANDLE
OAKBROOK TERRACE - Hawthorne	22,084,682	52,547,001	74,631,683	204,470
CRESTWOOD - Sportsman's (NJC)	24,280,820	44,279,273	68,560,093	187,836
CHICAGO (Weed St.) - Arlington	16,357,513	50,840,292	67,197,805	184,104
CHICAGO (Corliss) - Balmoral	20,055,964	36,955,017	57,010,981	156,194
CHICAGO (State St.) - Hawthorne	12,970,241	33,356,781	46,327,022	126,923
WAUKEGAN - Arlington	10,895,898	32,370,913	43,266,811	118,539
CHICAGO (W. Jackson) - Maywood	11,047,669	29,329,842	40,377,511	110,623
NORTH AURORA - Maywood	8,925,024	19,201,281	28,126,305	77,058
ROCKFORD - Quad City Downs	7,664,033	16,330,897	23,994,930	65,740
JOLIET - Sportsman's (NJC)	5,708,460	13,152,897	18,861,357	51,675
SPRINGFIELD - Fairmount	4,650,993	13,545,154	18,196,147	49,852
ALTON-BELLE - Fairmount	4,254,475	11,735,737	15,990,212	43,809
BLOOMINGTON - Balmoral	2,725,640	8,209,512	10,935,152	29,959
JOLIET EMPRESS - Maywood	2,977,088	6,910,127	9,887,215	27,088
CHAMPAIGN - Balmoral	2,549,275	7,323,749	9,873,024	27,049
DANVILLE - Balmoral	1,952,651	6,183,124	8,135,775	22,290
CARBONDALE - Fairmount	1,942,630	5,480,970	7,423,600	20,339
GRAYVILLE - Fairmount	1,511,171	5,209,279	6,720,450	18,412
PERU - Sportsman's (NJC)	2,111,497	3,841,720	5,953,217	16,310
EFFINGHAM - Fairmount	1,590,914	3,172,105	4,763,019	13,049
TOTAL	166,256,638	399,975,671	566,232,309	1,551,321

1998 INTERTRACK HANDLES

	LIVE ILLINOIS HANDLE	SIMULCAST HANDLE	TOTAL HANDLE	AVERAGE DAILY HANDLE
ARLINGTON INT'L RACECOURSE	35,340,406	89,415,155	124,755,561	341,796
MAYWOOD PARK	23,071,471	44,660,819	67,732,290	185,568
FAIRMOUNT PARK	10,576,335	44,952,048	55,528,383	152,133
SPORTSMAN'S PARK	6,222,861	10,816,645	17,039,506	46,684
BALMORAL PARK	5,372,412	11,627,345	16,999,757	46,575
HAWTHORNE RACE COURSE	7,325,916	8,781,900	16,107,816	44,131
QUAD CITY DOWNS	4,833,206	9,853,874	14,687,080	40,239
TOTAL	92,742,607	220,107,786	312,850,393	857,124

**SUMMARY OF SURCHARGES AND REVENUES TO LOCAL GOVERNMENTS
FROM OFF TRACK PARLORS IN 1998**

CITY - Licensee	HANDLE	TOTAL SURCHARGE ON WINNINGS	REVENUE TO CITY (1% OF HANDLE)	REVENUE TO COUNTY (1% OF HANDLE)	OVER/ (UNDER) TO LICENSEE
WAUKEGAN - Arlington December 30, 1988 - Lake	43,266,811	842,939	432,668	432,668	(22,397)
CHICAGO (Weed St.) - Arlington June 4, 1993 - Cook	67,197,805	1,325,179	671,978	671,978	(18,777)
DANVILLE - Balmoral January 24, 1991 - Vermillion	8,135,775	152,199	81,358	81,358	(10,517)
CHICAGO (Corliss) - Balmoral April 18, 1991 - Cook	57,010,981	1,091,287	570,110	570,110	(48,933)
CHAMPAIGN - Balmoral April 29, 1992 - Champaign	9,873,024	191,938	98,730	98,730	(5,522)
BLOOMINGTON - Balmoral May 26, 1992 - McLean	10,935,152	209,763	109,352	109,352	(8,940)
SPRINGFIELD - Fairmount May 5, 1988 - Sangamon	18,196,147	354,122	181,961	181,961	(9,801)
GRAYVILLE - Fairmount August 7, 1989 - White	6,720,450	133,349	67,205	67,205	(1,060)
EFFINGHAM - Fairmount April 16, 1992 - Effingham	4,763,019	92,559	47,630	47,630	(2,701)
CARBONDALE - Fairmount August 20, 1992 - Jackson	7,423,600	147,379	74,236	74,236	(1,093)
ALTON-BELLE - Fairmount August 18, 1994 - Madison	15,990,212	312,713	159,902	159,902	(7,091)
CHICAGO (State St.) - Hawthorne October 24, 1989 - Cook	46,327,022	903,187	463,270	463,270	(23,353)
OAKBROOK TERRACE - Hawthorne September 4, 1992 - DuPage	74,631,683	1,454,202	746,317	746,317	(38,432)
CHICAGO (W. Jackson) - Maywood July 19, 1988 - Cook	40,377,511	785,959	403,775	403,775	(21,591)
NORTH AURORA - Maywood May 31, 1989 - Kane	28,126,305	550,694	281,263	281,263	(11,832)
JOLIET EMPRESS - Maywood January 20, 1994 - Will	9,887,215	192,059	98,872	98,872	(5,685)
JOLIET - Sportsman's (NJC) October 25, 1990 - Will	18,861,357	367,164	188,614	188,614	(10,063)
CRESTWOOD - Sportsman's (NJC) February 17, 1992 - Cook	68,560,093	1,329,553	685,601	685,601	(41,649)
PERU - Sportsman's (NJC) March 5, 1992 - LaSalle	5,953,217	114,917	59,532	59,532	(4,147)
ROCKFORD - Quad City Downs November 18, 1987 - Winnebago	23,994,930	467,902	239,949	239,949	(11,997)
TOTAL	566,232,309	11,019,064	5,662,323	5,662,323	(305,582)

1998 COMMINGLED HANDLE VS. SIMULCAST HANDLE

	COMMINGLED IN	SIMULCAST OUT	
	OUT-OF-STATE HANDLE INTO ILLINOIS POOLS	ILLINOIS HANDLE ON OUT-OF- STATE RACES	"TRADE BALANCE" DIFFERENCE
THOROUGHBRED MEETS			
NATIONAL JOCKEY CLUB (SPORTSMAN'S)	116,138,678	251,471,201	(135,332,523)
HAWTHORNE RACE COURSE	145,966,507	213,023,678	(67,057,171)
FAIRMOUNT PARK	16,036,670	394,981	15,641,689
THOROUGHBRED TOTAL	278,141,855	464,889,860	(186,748,005)
	COMMINGLED IN	SIMULCAST OUT	
	OUT-OF-STATE HANDLE INTO ILLINOIS POOLS	ILLINOIS HANDLE ON OUT-OF- STATE RACES	"TRADE BALANCE" DIFFERENCE
HARNESS MEETS			
BALMORAL RACING CLUB	104,225,781	126,725,519	(22,499,738)
MAYWOOD PARK TROTTING	27,081,521	55,010,321	(27,928,800)
EGYPTIAN TROTTING (MAYWOOD)	16,225,723	26,889,439	(10,663,716)
ASSOCIATES RACING (MAYWOOD)	19,831,436	25,166,521	(5,335,085)
FAIRMOUNT PARK	9,384,294	1,027,798	8,356,496
DUQUOIN FAIR	120,571	0	120,571
HARNESS TOTAL	176,869,326	234,819,598	(57,950,272)
ALL RACING TOTAL	455,011,181	699,709,458	(244,698,277)

1988 - 1998 "TRADE BALANCE" FROM SIMULCASTING INTO AND OUT OF ILLINOIS

	COMMINGLED IN	SIMULCAST OUT	
	OUT-OF-STATE HANDLE INTO ILLINOIS POOLS	ILLINOIS HANDLE ON OUT-OF- STATE RACES	"TRADE BALANCE" DIFFERENCE
1988	not allowed	17,561,687	(17,561,687)
1989	not allowed	21,489,159	(21,489,159)
1990	18,795,400	23,020,321	(4,224,921)
1991	17,255,791	30,321,477	(13,065,686)
1992	82,581,380	34,054,510	48,526,870
1993	127,121,414	47,861,326	79,260,088
1994	233,137,790	56,851,822	176,285,968
1995	297,133,418	329,642,288	(32,508,870)
1996	551,232,436	572,268,505	(21,036,069)
1997	524,992,359	626,324,386	(101,332,027)
1998	455,011,181	699,709,458	(244,698,277)

1998 ILLINOIS HANDLE ON OUT-OF-STATE TRACKS

SPORTSMAN'S THOROUGHBRED

TRACK	HANDLE	PROGS	AVERAGE
Gulfstream	29,052,891	64	453,951
Churchill	20,093,188	49	410,065
Keeneland	4,375,642	15	291,709
Oaklawn	13,757,481	53	259,575
Fairgrounds	14,994,088	63	238,001
Belmont	8,364,835	36	232,357
Santa Anita	17,064,904	81	210,678
Aqueduct	17,286,551	91	189,962
Hialeah	10,359,644	60	172,661
Calder	4,765,519	29	164,328
Lone Star	3,517,350	23	152,928
Hollywood	5,783,070	41	141,050
Ellis Park	125,120	1	125,120
Tampa Downs	10,444,814	84	124,343
Pimlico	7,209,642	59	122,197
Turf Paradise	9,264,086	79	117,267
All Others	74,972,516	1073	69,872
TOTAL	251,431,341	1,901	132,263

HAWTHORNE THOROUGHBRED

TRACK	HANDLE	PROGS	AVERAGE
Churchill	11,863,135	24	494,297
Fairgrounds	8,030,674	25	321,227
Saratoga	11,359,739	36	315,548
Belmont	14,409,800	55	261,996
Keeneland	4,106,397	16	256,650
Aqueduct	10,173,351	44	231,213
Meadowlands	613,238	3	204,413
Hollywood	8,557,364	42	203,747
Calder	28,275,064	143	197,728
Santa Anita	7,144,740	37	193,101
Ellis Park	11,175,736	60	186,262
Louisiana Downs	14,630,354	83	176,269
Turf Paradise	2,258,324	14	161,309
Golden Gate	3,374,305	22	153,378
Tampa Downs	1,060,183	7	151,455
Monmouth	5,938,864	41	144,850
All Others	70,052,410	891	78,622
TOTAL	213,023,678	1,543	138,058

BALMORAL HARNESS

TRACK	HANDLE	PROGS	AVERAGE
Meadowlands	21,935,493	114	192,417
Evangeline	5,384,714	42	128,207
Lone Star	3,455,000	30	115,167
Sam Houston	9,169,169	88	104,195
Turfway Park	2,067,403	20	103,370
Los Alamitos	15,083,224	148	101,914
Del Mar	1,986,058	21	94,574
Hoosier	7,014,138	91	77,078
Garden State	5,066,778	66	76,769
Cal Expo	4,323,371	59	73,277
Penn National	3,948,504	54	73,120
Meadows	7,087,266	106	66,861
Prairie Meadow	2,575,674	39	66,043
Northfield	5,309,942	82	64,755
Colonial	381,842	6	63,640
Hastings	1,568,754	27	58,102
All Others	30,368,189	863	35,189
TOTAL	126,725,519	1,856	68,279

MAYWOOD HARNESS

TRACK	HANDLE	PROGS	AVERAGE
Meadowlands	16,907,735	87	194,342
Sam Houston	4,932,853	32	154,152
Los Alamitos	7,348,953	51	144,097
Evangeline	5,543,237	40	138,581
Lone Star	4,677,087	36	129,919
Turfway Park	4,375,758	38	115,152
Bay Meadows	2,765,871	26	106,380
Del Mar	2,181,230	22	99,147
Penn National	8,648,449	94	92,005
Hoosier	5,348,200	59	90,647
Cal Expo	2,253,119	25	90,125
Hollywood	2,678,087	31	86,390
Prairie Meadows	2,255,111	27	83,523
Garden State	3,299,485	40	82,487
Retama	1,006,895	13	77,453
Northfield	11,637,762	154	75,570
All Others	21,206,449	532	39,862
TOTAL	107,066,281	1,307	81,918

1998 RACING DATES

THOROUGHBRED RACING DATES

SPORTSMAN'S PARK	(105 Days)	6 day week	
National Jockey Club		March 1 - June 30	105 Days
HAWTHORNE RACE COURSE	(129 Days)	6 day week	
Hawthorne Race Course, Inc.		July 1 - November 28	129 Days
FAIRMOUNT PARK	(125 Days)	5 day/night week	
Ogden-Fairmount, Inc.		March 27 - September 12	125 Days

HARNESS RACING DATES

BALMORAL PARK	(208 Days)	4 night week	
Balmoral Racing Club, Inc.		January 1 - December 31	208 Days
MAYWOOD PARK	(155 Days)	3 night week	
Maywood Park Trotting Association, Inc.		January 1 - June 30	77 Days
Egyptian Trotting Association, Inc.		July 1 - September 29	39 Days
Associates Racing Association, Inc.		September 30 - December 31	39 Days
FAIRMOUNT PARK	(105 Days)	5 day/night week	
Ogden-Fairmount, Inc.		January 1 - March 1, September 19 - December 31	105 Days

1999 RACING DATES

THOROUGHBRED RACING DATES

SPORTSMAN'S PARK	(95 Days)	5 day week	
National Jockey Club		February 19 - June 30	95 Days
HAWTHORNE RACE COURSE	(108 Days)	5 day week	
Hawthorne Race Course, Inc.		July 1 - November 28	108 Days
FAIRMOUNT PARK	(101 Days)	5 day/night week	
Ogden-Fairmount, Inc.		March 30 - September 18	101 Days

HARNESS RACING DATES

BALMORAL PARK	(206 Days)	4 night week	
Balmoral Racing Club, Inc.		January 1 - December 31	206 Days
MAYWOOD PARK	(155 Days)	3 night week	
Maywood Park Trotting Association, Inc.		January 1 - June 30	78 Days
Associates Racing Association, Inc.		July 1 - September 29	39 Days
Egyptian Trotting Association, Inc.		September 30 - December 30	38 Days
FAIRMOUNT PARK	(116 Days)	5 day/night week	
Ogden-Fairmount, Inc.		January 1 - March 7, September 25 - December 31	116 Days

NATIONAL JOCKEY CLUB - SPORTSMAN'S PARK

JANUARY 1 - JUNE 30

	ON TRACK AT SPORTSMAN'S	INTER TRACK ON SPORTSMAN'S	OFF TRACK ON SPORTSMAN'S	ALL LOCATIONS ON SPORTSMAN'S
THOROUGHBRED MEET				
Live Programs Raced	101	505	2,018	2,624
Total Live + Dark Days	181	0	0	181
Live Races Run	936	0	0	936
Attendance	352,153	186,334	N/A	538,487
Purse Distribution				21,766,997
Illinois Handle on Illinois Races	31,694,237	19,703,874	31,416,194	82,814,305
Illinois Handle on Out-of-State Races on Live Days	20,715,251	40,846,185	72,090,936	133,652,372
Combined Illinois Handle on Live Days	52,409,488	60,550,059	103,507,130	216,466,677
Illinois Handle on Out-of-State Races on Dark Days	11,911,159	37,175,853	68,731,817	117,818,829
Combined Illinois Handle on Live + Dark Days	64,320,647	97,725,912	172,238,947	334,285,506
Percentage of Total Combined Illinois Handle	19.24%	29.23%	51.52%	
Ill. Handle on Out-of-State Races on Live + Dark Days	32,626,410	78,022,038	140,822,753	251,471,201
Out-of-State Handle (Commingled) on Illinois Programs				116,138,678
Total Meet Handle on Live Days				332,605,355
Total Meet Handle on Live + Dark Days				450,424,184
Average Illinois Handle on Illinois Races	313,804	195,088	311,051	819,944
Avg. Ill. Handle on Out-of-State Races on Live Days	205,101	404,418	713,772	1,323,291
Average Combined Illinois Handle on Live Days	518,906	599,506	1,024,823	2,143,234
Avg. Ill. Handle on Out-of-State Races on Dark Days	148,889	464,698	859,148	1,472,735
Avg. Combined Illinois Handle on Live + Dark Days	355,363	539,922	951,596	1,846,881
Avg. Ill. Handle on Out-of-State Races on Live+Dark Days	180,256	431,061	778,026	1,389,344
Avg. Out-of-State Handle (Commingled) on Illinois Programs				1,149,888
Average Total Meet Handle on Live Days				3,293,122
Average Total Meet Handle on Live + Dark Days				2,488,531
Combined Illinois Handle	\$ 64,320,647	97,725,912	172,238,947	334,285,506
-Commission (Take Out)	\$ 12,409,568	19,805,593	34,993,883	67,209,044
Track Commission *	\$ 4,674,979	7,769,660	14,285,250	26,729,889
Purses Earned **	\$ 4,674,979	7,769,660	11,348,581	23,793,220
Out-of-State Simulcast Fee (3%)	\$ 978,792	2,340,661	4,224,683	7,544,136
Privilege Tax	\$ 2,080,818	1,925,612	3,412,979	7,419,409
Horse Racing Tax Allocation	\$ 0	0	1,722,390	1,722,390
Public Pool	\$ 51,911,079	77,920,319	137,245,064	267,076,462
-Breakage	\$ 409,776	523,079	868,339	1,801,194
Race Track Improvement Fund	\$ 204,888	261,540	434,170	900,597
Breakage to General Revenue	\$ 204,888	261,540	434,170	900,597
-Surcharge	\$ 0	1,160,089	3,350,782	4,510,871
Payout to Public	\$ 51,501,303	76,237,151	133,025,943	260,764,397
Privilege Tax	\$ 2,080,818	1,925,612	3,412,979	7,419,409
Breakage	\$ 409,776	523,079	868,339	1,801,194
Horse Racing Tax Allocation	\$ 0	0	1,722,390	1,722,390
License Fee	\$ 12,550	0	0	12,550
License Fee - Daily Handle	\$ 1,900	0	0	1,900
Admission Tax	\$ 6,593	19,292	0	25,885
Uncashed Tickets (1996)	\$ 125,547	190,750	336,192	652,489
TOTAL REVENUE TO STATE	\$ 2,637,184	2,658,733	6,339,900	11,635,817
AVG. DAILY STATE REVENUE	\$ 26,111	26,324	62,771	115,206

* Included are commissions earned by intertrack and off-track outlets.

** Included are purses earned for Fairmount Park and race meets affiliated with intertrack outlets.

HAWTHORNE RACE COURSE, INC. - HAWTHORNE RACE COURSE JULY 1 - DECEMBER 31

	ON TRACK AT HAWTHORNE	INTER TRACK ON HAWTHORNE	OFF TRACK ON HAWTHORNE	ALL LOCATIONS ON HAWTHORNE
THOROUGHBRED MEET				
Live Programs Raced	114	570	2,280	2,964
Total Live + Dark Days	183	0	0	183
Live Races Run	1,071	0	0	1,071
Attendance	364,859	264,852	N/A	629,711
Purse Distribution				22,733,634
Illinois Handle on Illinois Races	38,906,539	25,517,935	39,778,480	104,202,954
Illinois Handle on Out-of-State Races on Live Days	20,378,341	41,153,237	72,850,909	134,382,487
Combined Illinois Handle on Live Days	59,284,880	66,671,172	112,629,389	238,585,441
Illinois Handle on Out-of-State Races on Dark Days	7,386,639	24,508,815	46,745,737	78,641,191
Combined Illinois Handle on Live + Dark Days	66,671,519	91,179,987	159,375,126	317,226,632
Percentage of Total Combined Illinois Handle	21.02%	28.74%	50.24%	
Ill. Handle on Out-of-State Races on Live + Dark Days	27,764,980	65,662,052	119,596,646	213,023,678
Out-of-State Handle (Commingled) on Illinois Programs				145,966,507
Total Meet Handle on Live Days				384,551,948
Total Meet Handle on Live + Dark Days				463,193,139
Average Illinois Handle on Illinois Races	341,285	223,842	348,934	914,061
Avg. Ill. Handle on Out-of-State Races on Live Days	178,757	360,993	639,043	1,178,794
Average Combined Illinois Handle on Live Days	520,043	584,835	987,977	2,092,855
Avg. Ill. Handle on Out-of-State Races on Dark Days	107,053	355,200	677,474	1,139,727
Avg. Combined Illinois Handle on Live + Dark Days	364,325	498,251	870,902	1,733,479
Avg. Ill. Handle on OutofState Races on Live+Dark Days	151,721	358,809	653,534	1,164,064
Avg. Out-of-State Handle (Commingled) on Illinois Programs				1,280,408
Average Total Meet Handle on Live Days				3,373,263
Average Total Meet Handle on Live + Dark Days				2,531,110
Combined Illinois Handle	\$ 66,671,519	91,179,987	159,375,126	317,226,632
-Commission (Take Out)	\$ 13,306,156	18,477,337	32,206,241	63,989,734
Track Commission *	\$ 5,141,101	7,332,577	13,778,470	26,252,148
Purses Earned **	\$ 5,141,101	7,332,577	10,061,753	22,535,431
Out-of-State Simulcast Fee (3%)	\$ 832,949	1,969,862	3,587,899	6,390,710
Privilege Tax	\$ 2,191,005	1,842,321	3,184,368	7,217,694
Horse Racing Tax Allocation	\$ 0	0	1,593,751	1,593,751
Public Pool	\$ 53,365,363	72,702,650	127,168,885	253,236,898
-Breakage	\$ 404,455	464,079	786,131	1,654,665
Race Track Improvement Fund	\$ 202,228	232,040	393,066	827,333
Breakage to General Revenue	\$ 202,228	232,040	393,066	827,333
-Surcharge	\$ 0	1,098,707	3,102,520	4,201,227
Payout to Public	\$ 52,960,908	71,139,864	123,280,234	247,381,006
Privilege Tax	\$ 2,191,005	1,842,321	3,184,368	7,217,694
Breakage	\$ 404,455	464,079	786,131	1,654,665
Horse Racing Tax Allocation	\$ 0	0	1,593,751	1,593,751
License Fee	\$ 15,190	0	0	15,190
License Fee - Daily Handle	\$ 3,000	0	0	3,000
Admission Tax	\$ 22,749	18,023	0	40,772
Uncashed Tickets (1996)	\$ 103,568	141,639	247,574	492,781
TOTAL REVENUE TO STATE	\$ 2,739,967	2,466,062	5,811,824	11,017,853
AVG. DAILY STATE REVENUE	\$ 24,035	21,632	50,981	96,648

* Included are commissions earned by intertrack and off-track outlets.

** Included are purses earned for Fairmount Park and race meets affiliated with intertrack outlets.

OGDEN-FAIRMOUNT, INC. - FAIRMOUNT PARK
MARCH 27 - SEPTEMBER 12

	ON TRACK AT FAIRMOUNT	INTER TRACK ON FAIRMOUNT	OFF TRACK ON FAIRMOUNT	ALL LOCATIONS ON FAIRMOUNT
THOROUGHBRED MEET				
Live Programs Raced	100	500	2,000	2,600
Total Live + Dark Days	100	0	0	100
Live Races Run	1,003	0	0	1,003
Attendance	241,847	504	N/A	242,351
Purse Distribution				5,403,804
Illinois Handle on Illinois Races	14,346,170	2,987,360	7,419,216	24,752,746
Illinois Handle on Out-of-State Races on Live Days	261,544	0	133,437	394,981
Combined Illinois Handle on Live Days	14,607,714	2,987,360	7,552,653	25,147,727
Illinois Handle on Out-of-State Races on Dark Days	0	0	0	0
Combined Illinois Handle on Live + Dark Days	14,607,714	2,987,360	7,552,653	25,147,727
Percentage of Total Combined Illinois Handle	58.09%	11.88%	30.03%	
Ill. Handle on Out-of-State Races on Live + Dark Days	261,544	0	133,437	394,981
Out-of-State Handle (Commingled) on Illinois Programs				16,036,670
Total Meet Handle on Live Days				41,184,397
Total Meet Handle on Live + Dark Days				41,184,397
Average Illinois Handle on Illinois Races	143,462	29,874	74,192	247,527
Avg. Ill. Handle on Out-of-State Races on Live Days	2,615	0	1,334	3,950
Average Combined Illinois Handle on Live Days	146,077	29,874	75,527	251,477
Avg. Ill. Handle on Out-of-State Races on Dark Days	N/A	N/A	N/A	N/A
Avg. Combined Illinois Handle on Live + Dark Days	146,077	29,874	75,527	251,477
Avg. Ill. Handle on OutofState Races on Live+Dark Days	2,615	0	1,334	3,950
Avg. Out-of-State Handle (Commingled) on Illinois Programs				160,367
Average Total Meet Handle on Live Days				411,844
Average Total Meet Handle on Live + Dark Days				411,844
Combined Illinois Handle	\$ 14,607,714	2,987,360	7,552,653	25,147,727
-Commission (Take Out)	\$ 2,938,211	599,691	1,533,306	5,071,208
Track Commission *	\$ 1,329,556	272,569	995,852	2,597,977
Purses Earned **	\$ 1,329,556	272,569	314,602	1,916,727
Out-of-State Simulcast Fee (3%)	\$ 7,846	0	4,003	11,849
Privilege Tax	\$ 271,253	54,553	143,322	469,128
Horse Racing Tax Allocation	\$ 0	0	75,527	75,527
Public Pool	\$ 11,669,503	2,387,669	6,019,347	20,076,519
-Breakage	\$ 104,664	20,338	44,141	169,143
Race Track Improvement Fund	\$ 52,332	10,169	22,071	84,572
Breakage to General Revenue	\$ 52,332	10,169	22,071	84,572
-Surcharge	\$ 117,994	35,675	147,478	301,147
Payout to Public	\$ 11,446,845	2,331,656	5,827,728	19,606,229
Privilege Tax	\$ 271,253	54,553	143,322	469,128
Breakage	\$ 104,664	20,338	44,141	169,143
Horse Racing Tax Allocation	\$ 0	0	75,527	75,527
License Fee	\$ 14,750	0	0	14,750
License Fee - Daily Handle	\$ 0	0	0	0
Admission Tax	\$ 14,703	40	0	14,743
Uncashed Tickets (1996)	\$ 90,617	18,532	46,852	156,000
TOTAL REVENUE TO STATE	\$ 495,987	93,463	309,842	899,291
AVG. DAILY STATE REVENUE	\$ 4,960	935	3,098	8,993

* Included are commissions earned by intertrack and off-track outlets.

** Included are purses earned for Fairmount Park and race meets affiliated with intertrack outlets.

MAYWOOD PARK TROTTING ASSOCIATION, INC. - MAYWOOD PARK JANUARY 1 - JUNE 30

	ON TRACK AT MAYWOOD	INTER TRACK ON MAYWOOD	OFF TRACK ON MAYWOOD	ALL LOCATIONS ON MAYWOOD
HARNESS MEET				
Live Programs Raced	61	305	1,219	1,585
Total Live + Dark Days	77	0	0	77
Live Races Run	644	0	0	644
Attendance	76,844	76,138	N/A	152,982
Purse Distribution				4,281,690
Illinois Handle on Illinois Races	6,502,328	5,503,412	12,849,449	24,855,189
Illinois Handle on Out-of-State Races on Live Days	5,272,951	12,580,193	26,205,514	44,058,658
Combined Illinois Handle on Live Days	11,775,279	18,083,605	39,054,963	68,913,847
Illinois Handle on Out-of-State Races on Dark Days	1,039,207	3,140,875	6,771,581	10,951,663
Combined Illinois Handle on Live + Dark Days	12,814,486	21,224,480	45,826,544	79,865,510
Percentage of Total Combined Illinois Handle	16.05%	26.58%	57.38%	
Ill. Handle on Out-of-State Races on Live + Dark Days	6,312,158	15,721,068	32,977,095	55,010,321
Out-of-State Handle (Commingle) on Illinois Programs				27,081,521
Total Meet Handle on Live Days				95,995,368
Total Meet Handle on Live + Dark Days				106,947,031
Average Illinois Handle on Illinois Races	106,596	90,220	210,647	407,462
Avg. Ill. Handle on Out-of-State Races on Live Days	86,442	206,233	429,599	722,273
Average Combined Illinois Handle on Live Days	193,037	296,453	640,245	1,129,735
Avg. Ill. Handle on Out-of-State Races on Dark Days	64,950	196,305	423,224	684,479
Avg. Combined Illinois Handle on Live + Dark Days	166,422	275,643	595,150	1,037,214
Avg. Ill. Handle on Out-of-State Races on Live+Dark Days	81,976	204,170	428,274	714,420
Avg. Out-of-State Handle (Commingle) on Illinois Programs				443,959
Average Total Meet Handle on Live Days				1,573,695
Average Total Meet Handle on Live + Dark Days				1,388,922
Combined Illinois Handle	\$ 12,814,486	21,224,480	45,826,544	79,865,510
-Commission (Take Out)	\$ 2,653,295	4,410,731	9,627,359	16,691,385
Track Commission *	\$ 1,008,708	1,754,805	4,231,353	6,994,866
Purses Earned **	\$ 1,008,708	1,754,805	2,991,285	5,754,798
Out-of-State Simulcast Fee (3%)	\$ 189,365	471,632	989,313	1,650,310
Privilege Tax	\$ 446,514	429,489	957,143	1,833,146
Horse Racing Tax Allocation	\$ 0	0	458,265	458,265
Public Pool	\$ 10,161,191	16,813,749	36,199,185	63,174,125
-Breakage	\$ 84,847	125,934	239,944	450,725
Race Track Improvement Fund	\$ 42,424	62,967	119,972	225,363
Breakage to General Revenue	\$ 42,424	62,967	119,972	225,363
-Surcharge	\$ 53,078	251,253	891,198	1,195,529
Payout to Public	\$ 10,023,266	16,436,562	35,068,043	61,527,871
Privilege Tax	\$ 446,514	429,489	957,143	1,833,146
Breakage	\$ 84,847	125,934	239,944	450,725
Horse Racing Tax Allocation	\$ 0	0	458,265	458,265
License Fee	\$ 9,470	0	0	9,470
License Fee - Daily Handle	\$ 0	0	0	0
Admission Tax	\$ 3,617	4,711	0	8,328
Uncashed Tickets (1996)	\$ 26,472	43,846	94,670	164,988
TOTAL REVENUE TO STATE	\$ 570,920	603,980	1,750,022	2,924,922
AVG. DAILY STATE REVENUE	\$ 9,359	9,901	28,689	47,950

* Included are commissions earned by intertrack and off-track outlets.

** Included are purses earned for Fairmount Park and race meets affiliated with intertrack outlets.

EGYPTIAN TROTTING ASSOCIATION, INC. - MAYWOOD PARK
JULY 1 - SEPTEMBER 29

	ON TRACK AT MAYWOOD	INTER TRACK ON MAYWOOD	OFF TRACK ON MAYWOOD	ALL LOCATIONS ON MAYWOOD
HARNESS MEET				
Live Programs Raced	39	195	780	1,014
Total Live + Dark Days	39	0	0	39
Live Races Run	416	0	0	416
Attendance	47,342	35,232	N/A	82,574
Purse Distribution				3,063,300
Illinois Handle on Illinois Races	4,236,569	3,512,277	7,823,745	15,572,591
Illinois Handle on Out-of-State Races on Live Days	<u>3,052,017</u>	<u>8,045,135</u>	<u>15,792,287</u>	<u>26,889,439</u>
Combined Illinois Handle on Live Days	7,288,586	11,557,412	23,616,032	42,462,030
Illinois Handle on Out-of-State Races on Dark Days	0	0	0	0
Combined Illinois Handle on Live + Dark Days	7,288,586	11,557,412	23,616,032	42,462,030
Percentage of Total Combined Illinois Handle	17.16%	27.22%	55.62%	
Ill. Handle on Out-of-State Races on Live + Dark Days	3,052,017	8,045,135	15,792,287	26,889,439
Out-of-State Handle (Commingled) on Illinois Programs				16,225,723
Total Meet Handle on Live Days				58,687,753
Total Meet Handle on Live + Dark Days				58,687,753
Average Illinois Handle on Illinois Races	108,630	90,058	200,609	399,297
Avg. Ill. Handle on Out-of-State Races on Live Days	<u>78,257</u>	<u>206,286</u>	<u>404,930</u>	<u>689,473</u>
Average Combined Illinois Handle on Live Days	186,887	296,344	605,539	1,088,770
Avg. Ill. Handle on Out-of-State Races on Dark Days	N/A	N/A	N/A	N/A
Avg. Combined Illinois Handle on Live + Dark Days	186,887	296,344	605,539	1,088,770
Avg. Ill. Handle on OutofState Races on Live+Dark Days	78,257	206,286	404,930	689,473
Avg. Out-of-State Handle (Commingled) on Illinois Programs				416,044
Average Total Meet Handle on Live Days				1,504,814
Average Total Meet Handle on Live + Dark Days				1,504,814
Combined Illinois Handle	\$ 7,288,586	11,557,412	23,616,032	42,462,030
-Commission (Take Out)	\$ 1,498,858	2,370,192	4,900,716	8,769,765
Track Commission *	\$ 576,007	947,921	2,226,205	3,750,133
Purses Earned **	\$ 576,007	947,921	1,471,112	2,995,040
Out-of-State Simulcast Fee (3%)	\$ 91,561	241,354	473,769	806,683
Privilege Tax	\$ 255,283	232,996	493,470	981,749
Horse Racing Tax Allocation	\$ 0	0	236,160	236,160
Public Pool	\$ 5,789,728	9,187,220	18,715,316	33,692,265
-Breakage	\$ 48,471	73,021	127,887	249,379
Race Track Improvement Fund	\$ 24,236	36,511	63,944	124,690
Breakage to General Revenue	\$ 24,236	36,511	63,944	124,690
-Surcharge	\$ 34,142	138,527	457,728	630,397
Payout to Public	\$ 5,707,115	8,975,672	18,129,701	32,812,489
Privilege Tax	\$ 255,283	232,996	493,470	981,749
Breakage	\$ 48,471	73,021	127,887	249,379
Horse Racing Tax Allocation	\$ 0	0	236,160	236,160
License Fee	\$ 5,290	0	0	5,290
License Fee - Daily Handle	\$ 0	0	0	0
Admission Tax	\$ 2,810	1,976	0	4,786
Uncashed Tickets (1996)	\$ 11,704	18,560	37,924	68,188
TOTAL REVENUE TO STATE	\$ <u>323,558</u>	<u>326,553</u>	<u>895,441</u>	<u>1,545,552</u>
AVG. DAILY STATE REVENUE	\$ <u>8,296</u>	<u>8,373</u>	<u>22,960</u>	<u>39,630</u>

* Included are commissions earned by intertrack and off-track outlets.

** Included are purses earned for Fairmount Park and race meets affiliated with intertrack outlets.

ASSOCIATES RACING ASSOCIATION, INC. - MAYWOOD PARK

SEPTEMBER 30 - DECEMBER 31

	ON TRACK AT MAYWOOD	INTER TRACK ON MAYWOOD	OFF TRACK ON MAYWOOD	ALL LOCATIONS ON MAYWOOD
HARNESS MEET				
Live Programs Raced	39	195	780	1,014
Total Live + Dark Days	39	0	0	39
Live Races Run	416	0	0	416
Attendance	45,903	36,707	N/A	82,610
Purse Distribution				3,571,250
Illinois Handle on Illinois Races	4,399,280	3,386,659	8,211,109	15,997,048
Illinois Handle on Out-of-State Races on Live Days	2,914,092	7,193,040	15,059,389	25,166,521
Combined Illinois Handle on Live Days	7,313,372	10,579,699	23,270,498	41,163,569
Illinois Handle on Out-of-State Races on Dark Days	0	0	0	0
Combined Illinois Handle on Live + Dark Days	7,313,372	10,579,699	23,270,498	41,163,569
Percentage of Total Combined Illinois Handle	17.77%	25.70%	56.53%	
Ill. Handle on Out-of-State Races on Live + Dark Days	2,914,092	7,193,040	15,059,389	25,166,521
Out-of-State Handle (Commingled) on Illinois Programs				19,831,436
Total Meet Handle on Live Days				60,995,005
Total Meet Handle on Live + Dark Days				60,995,005
Average Illinois Handle on Illinois Races	112,802	86,837	210,541	410,181
Avg. Ill. Handle on Out-of-State Races on Live Days	74,720	184,437	386,138	645,295
Average Combined Illinois Handle on Live Days	187,522	271,274	596,679	1,055,476
Avg. Ill. Handle on Out-of-State Races on Dark Days	N/A	N/A	N/A	N/A
Avg. Combined Illinois Handle on Live + Dark Days	187,522	271,274	596,679	1,055,476
Avg. Ill. Handle on Out-of-State Races on Live+Dark Days	74,720	184,437	386,138	645,295
Avg. Out-of-State Handle (Commingled) on Illinois Programs				508,498
Average Total Meet Handle on Live Days				1,563,974
Average Total Meet Handle on Live + Dark Days				1,563,974
Combined Illinois Handle	\$ 7,313,372	10,579,699	23,270,498	41,163,569
-Commission (Take Out)	\$ 1,512,216	2,209,084	4,878,492	8,599,792
Track Commission *	\$ 584,536	886,985	2,250,218	3,721,739
Purses Earned **	\$ 584,536	886,985	1,455,710	2,927,231
Out-of-State Simulcast Fee (3%)	\$ 87,423	215,791	451,782	754,996
Privilege Tax	\$ 255,721	219,323	488,077	963,121
Horse Racing Tax Allocation	\$ 0	0	232,705	232,705
Public Pool	\$ 5,801,156	8,370,615	18,392,006	32,563,777
-Breakage	\$ 52,645	61,545	125,748	239,938
Race Track Improvement Fund	\$ 26,323	30,773	62,874	119,969
Breakage to General Revenue	\$ 26,323	30,773	62,874	119,969
-Surcharge	\$ 35,553	125,704	453,885	615,142
Payout to Public	\$ 5,712,958	8,183,366	17,812,373	31,708,697
Privilege Tax	\$ 255,721	219,323	488,077	963,121
Breakage	\$ 52,645	61,545	125,748	239,938
Horse Racing Tax Allocation	\$ 0	0	232,705	232,705
License Fee	\$ 5,290	0	0	5,290
License Fee - Daily Handle	\$ 0	0	0	0
Admission Tax	\$ 2,462	1,931	0	4,393
Uncashed Tickets (1996)	\$ 12,002	17,362	38,189	67,554
TOTAL REVENUE TO STATE	\$ 328,120	300,161	884,719	1,513,001
AVG. DAILY STATE REVENUE	\$ 8,413	7,696	22,685	38,795

* Included are commissions earned by intertrack and off-track outlets.

** Included are purses earned for Fairmount Park and race meets affiliated with intertrack outlets.

1998 MAYWOOD PARK HARNESS COMBINED JANUARY 1 - DECEMBER 31

	ON TRACK AT <u>MAYWOOD</u>	INTER TRACK ON <u>MAYWOOD</u>	OFF TRACK ON <u>MAYWOOD</u>	ALL LOCATIONS ON <u>MAYWOOD</u>
HARNESS MEET				
Live Programs Raced	139	695	2,779	3,613
Total Live + Dark Days	155	0	0	155
Live Races Run	1,476	0	0	1,476
Attendance	170,089	148,077	N/A	318,166
Purse Distribution				10,916,240
Illinois Handle on Illinois Races	15,138,177	12,402,348	28,884,303	56,424,828
Illinois Handle on Out-of-State Races on Live Days	11,239,060	27,818,368	57,057,190	96,114,618
Combined Illinois Handle on Live Days	26,377,237	40,220,716	85,941,493	152,539,446
Illinois Handle on Out-of-State Races on Dark Days	1,039,207	3,140,875	6,771,581	10,951,663
Combined Illinois Handle on Live + Dark Days	27,416,444	43,361,591	92,713,074	163,491,109
Percentage of Total Combined Illinois Handle	16.77%	26.52%	56.71%	
Ill. Handle on Out-of-State Races on Live + Dark Days	12,278,267	30,959,243	63,828,771	107,066,281
Out-of-State Handle (Commingled) on Illinois Programs				63,138,680
Total Meet Handle on Live Days				215,678,126
Total Meet Handle on Live + Dark Days				226,629,789
Average Illinois Handle on Illinois Races	108,908	89,226	207,801	405,934
Avg. Ill. Handle on Out-of-State Races on Live Days	80,857	200,132	410,483	691,472
Average Combined Illinois Handle on Live Days	189,764	289,358	618,284	1,097,406
Avg. Ill. Handle on Out-of-State Races on Dark Days	N/A	N/A	N/A	N/A
Avg. Combined Illinois Handle on Live + Dark Days	176,880	279,752	598,149	1,054,781
Avg. Ill. Handle on OutofState Races on Live+Dark Days	79,215	199,737	411,799	690,750
Avg. Out-of-State Handle (Commingled) on Illinois Programs				454,235
Average Total Meet Handle on Live Days				1,551,641
Average Total Meet Handle on Live + Dark Days				1,462,128
Combined Illinois Handle	\$ 27,416,444	43,361,591	92,713,074	163,491,109
-Commission (Take Out)	\$ 5,664,368	8,990,007	19,406,566	34,060,941
Track Commission *	\$ 2,169,251	3,589,711	8,707,776	14,466,738
Purses Earned **	\$ 2,169,251	3,589,711	5,918,107	11,677,069
Out-of-State Simulcast Fee (3%)	\$ 368,348	928,777	1,914,863	3,211,988
Privilege Tax	\$ 957,518	881,808	1,938,690	3,778,016
Horse Racing Tax Allocation	\$ 0	0	927,130	927,130
Public Pool	\$ 21,752,076	34,371,584	73,306,508	129,430,168
-Breakage	\$ 185,963	260,500	493,579	940,042
Race Track Improvement Fund	\$ 92,982	130,250	246,790	470,021
Breakage to General Revenue	\$ 92,982	130,250	246,790	470,021
-Surcharge	\$ 122,773	515,484	1,802,811	2,441,068
Payout to Public	\$ 21,443,340	33,595,600	71,010,118	126,049,058
Privilege Tax	\$ 957,518	881,808	1,938,690	3,778,016
Breakage	\$ 185,963	260,500	493,579	940,042
Horse Racing Tax Allocation	\$ 0	0	927,130	927,130
License Fee	\$ 20,050	0	0	20,050
License Fee - Daily Handle	\$ 0	0	0	0
Admission Tax	\$ 8,889	8,618	0	17,507
Uncashed Tickets (1996)	\$ 50,179	79,768	170,783	300,730
TOTAL REVENUE TO STATE	\$ 1,222,599	1,230,694	3,530,182	5,983,475
AVG. DAILY STATE REVENUE	\$ 8,796	8,854	25,397	43,047

* Included are commissions earned by intertrack and off-track outlets.

** Included are purses earned for Fairmount Park and race meets affiliated with intertrack outlets.

BALMORAL RACING CLUB, INC. - BALMORAL PARK

JANUARY 1 - DECEMBER 31

	ON TRACK AT BALMORAL	INTER TRACK ON BALMORAL	OFF TRACK ON BALMORAL	ALL LOCATIONS ON BALMORAL
HARNESS MEET				
Live Programs Raced	186	930	3,718	4,834
Total Live + Dark Days	207	0	0	207
Live Races Run	2,040	0	0	2,040
Attendance	232,165	267,248	N/A	499,413
Purse Distribution				18,391,266
Illinois Handle on Illinois Races	19,693,420	28,492,700	49,768,955	97,955,075
Illinois Handle on Out-of-State Races on Live Days	5,714,693	41,110,896	67,311,490	114,137,079
Combined Illinois Handle on Live Days	25,408,113	69,603,596	117,080,445	212,092,154
Illinois Handle on Out-of-State Races on Dark Days	378,057	4,353,557	7,856,826	12,588,440
Combined Illinois Handle on Live + Dark Days	25,786,170	73,957,153	124,937,271	224,680,594
Percentage of Total Combined Illinois Handle	11.48%	32.92%	55.61%	
Ill. Handle on Out-of-State Races on Live + Dark Days	6,092,750	45,464,453	75,168,316	126,725,519
Out-of-State Handle (Commingle) on Illinois Programs				104,225,781
Total Meet Handle on Live Days				316,317,935
Total Meet Handle on Live + Dark Days				328,906,375
Average Illinois Handle on Illinois Races	105,879	153,187	267,575	526,640
Avg. Ill. Handle on Out-of-State Races on Live Days	30,724	221,026	361,890	613,640
Average Combined Illinois Handle on Live Days	136,603	374,213	629,465	1,140,280
Avg. Ill. Handle on Out-of-State Races on Dark Days	18,003	207,312	374,135	599,450
Avg. Combined Illinois Handle on Live + Dark Days	124,571	357,281	603,562	1,085,413
Avg. Ill. Handle on Out-of-State Races on Live+Dark Days	29,434	219,635	363,132	612,201
Avg. Out-of-State Handle (Commingle) on Illinois Programs				560,354
Average Total Meet Handle on Live Days				1,700,634
Average Total Meet Handle on Live + Dark Days				1,588,920
Combined Illinois Handle	\$ 25,786,170	73,957,153	124,937,271	224,680,594
-Commission (Take Out)	\$ 5,318,750	15,264,170	26,057,491	46,640,411
Track Commission *	\$ 2,305,446	6,200,871	12,372,122	20,878,439
Purses Earned **	\$ 2,305,446	6,200,871	7,565,787	16,072,104
Out-of-State Simulcast Fee (3%)	\$ 182,783	1,363,934	2,255,049	3,801,766
Privilege Tax	\$ 525,075	1,498,494	2,615,160	4,638,729
Horse Racing Tax Allocation	\$ 0	0	1,249,373	1,249,373
Public Pool	\$ 20,467,421	58,692,983	98,879,780	178,040,183
-Breakage	\$ 157,935	414,661	617,658	1,190,254
Race Track Improvement Fund	\$ 78,968	207,331	308,829	595,127
Breakage to General Revenue	\$ 78,968	207,331	308,829	595,127
-Surcharge	\$ 161,238	873,477	2,430,621	3,465,336
Payout to Public	\$ 20,148,248	57,404,845	95,831,501	173,384,593
Privilege Tax	\$ 525,075	1,498,494	2,615,160	4,638,729
Breakage	\$ 157,935	414,661	617,658	1,190,254
Horse Racing Tax Allocation	\$ 0	0	1,249,373	1,249,373
License Fee	\$ 23,880	0	0	23,880
License Fee - Daily Handle	\$ 100	0	0	100
Admission Tax	\$ 1,167	15,064	0	16,231
Uncashed Tickets (1996)	\$ 95,960	275,222	464,937	836,119
TOTAL REVENUE TO STATE	\$ 804,117	2,203,441	4,947,128	7,954,686
AVG. DAILY STATE REVENUE	\$ 4,323	11,846	26,597	42,767

* Included are commissions earned by intertrack and off-track outlets.

** Included are purses earned for Fairmount Park and race meets affiliated with intertrack outlets.

OGDEN-FAIRMOUNT, INC. - FAIRMOUNT PARK
JANUARY 1 - MARCH 1, SEPTEMBER 19 - DECEMBER 31

	ON TRACK AT FAIRMOUNT	INTER TRACK ON FAIRMOUNT	OFF TRACK ON FAIRMOUNT	ALL LOCATIONS ON FAIRMOUNT
HARNESS MEET				
Live Programs Raced	115	575	2,299	2,989
Total Live + Dark Days	115	0	0	115
Live Races Run	1,194	0	0	1,194
Attendance	146,014	0	N/A	146,014
Purse Distribution				2,709,970
Illinois Handle on Illinois Races	7,701,338	3,306,204	8,510,751	19,518,293
Illinois Handle on Out-of-State Races on Live Days	602,050	0	425,748	1,027,798
Combined Illinois Handle on Live Days	8,303,388	3,306,204	8,936,499	20,546,091
Illinois Handle on Out-of-State Races on Dark Days	0	0	0	0
Combined Illinois Handle on Live + Dark Days	8,303,388	3,306,204	8,936,499	20,546,091
Percentage of Total Combined Illinois Handle	40.41%	16.09%	43.49%	
Ill. Handle on Out-of-State Races on Live + Dark Days	602,050	0	425,748	1,027,798
Out-of-State Handle (Commingled) on Illinois Programs				9,384,294
Total Meet Handle on Live Days				29,930,385
Total Meet Handle on Live + Dark Days				29,930,385
Average Illinois Handle on Illinois Races	66,968	28,750	74,007	169,724
Avg. Ill. Handle on Out-of-State Races on Live Days	5,235	0	3,702	8,937
Average Combined Illinois Handle on Live Days	72,203	28,750	77,709	178,662
Avg. Ill. Handle on Out-of-State Races on Dark Days	N/A	N/A	N/A	N/A
Avg. Combined Illinois Handle on Live + Dark Days	72,203	28,750	77,709	178,662
Avg. Ill. Handle on OutofState Races on Live+Dark Days	5,235	0	3,702	8,937
Avg. Out-of-State Handle (Commingled) on Illinois Programs				81,603
Average Total Meet Handle on Live Days				260,264
Average Total Meet Handle on Live + Dark Days				260,264
Combined Illinois Handle	\$ 8,303,388	3,306,204	8,936,499	20,546,091
-Commission (Take Out)	\$ 1,749,885	681,359	1,861,505	4,292,749
Track Commission *	\$ 776,633	307,584	1,192,374	2,276,591
Purses Earned **	\$ 776,633	307,584	382,085	1,466,302
Out-of-State Simulcast Fee (3%)	\$ 18,062	0	12,772	30,834
Privilege Tax	\$ 178,557	66,191	184,909	429,657
Horse Racing Tax Allocation	\$ 0	0	89,365	89,365
Public Pool	\$ 6,553,504	2,624,845	7,074,994	16,253,342
-Breakage	\$ 46,568	21,130	48,824	116,522
Race Track Improvement Fund	\$ 23,284	10,565	24,412	58,261
Breakage to General Revenue	\$ 23,284	10,565	24,412	58,261
-Surcharge	\$ 69,453	38,914	175,431	283,798
Payout to Public	\$ 6,437,483	2,564,801	6,850,739	15,853,022
Privilege Tax	\$ 178,557	66,191	184,909	429,657
Breakage	\$ 46,568	21,130	48,824	116,522
Horse Racing Tax Allocation	\$ 0	0	89,365	89,365
License Fee	\$ 12,550	0	0	12,550
License Fee - Daily Handle	\$ 0	0	0	0
Admission Tax	\$ 9,801	0	0	9,801
Uncashed Tickets (1996)	\$ 43,732	17,413	47,067	108,212
TOTAL REVENUE TO STATE	\$ 291,208	104,734	370,165	766,107
AVG. DAILY STATE REVENUE	\$ 2,532	911	3,219	6,662

* Included are commissions earned by intertrack and off-track outlets.
 ** Included are purses earned for Fairmount Park and race meets affiliated with intertrack outlets.

ILLINOIS STATE FAIR - SPRINGFIELD AUGUST 14 - 20

	ON TRACK AT SPRINGFIELD	INTER TRACK ON SPRINGFIELD	OFF TRACK ON SPRINGFIELD	ALL LOCATIONS ON SPRINGFIELD
HARNESS MEET				
Live Programs Raced	6	36	120	162
Total Live + Dark Days	6	0	0	6
Live Races Run	78	0	0	78
Attendance	N/A	N/A	N/A	N/A
Purse Distribution				1,136,100
Illinois Handle on Illinois Races	569,055	210,680	302,652	1,082,387
Illinois Handle on Out-of-State Races on Live Days	0	0	0	0
Combined Illinois Handle on Live Days	569,055	210,680	302,652	1,082,387
Illinois Handle on Out-of-State Races on Dark Days	0	0	0	0
Combined Illinois Handle on Live + Dark Days	569,055	210,680	302,652	1,082,387
Percentage of Total Combined Illinois Handle	52.57%	19.46%	27.96%	
Ill. Handle on Out-of-State Races on Live + Dark Days	0	0	0	0
Out-of-State Handle (Commingled) on Illinois Programs				0
Total Meet Handle on Live Days				1,082,387
Total Meet Handle on Live + Dark Days				1,082,387
Average Illinois Handle on Illinois Races	94,843	35,113	50,442	180,398
Avg. Ill. Handle on Out-of-State Races on Live Days	0	0	0	0
Average Combined Illinois Handle on Live Days	94,843	35,113	50,442	180,398
Avg. Ill. Handle on Out-of-State Races on Dark Days	N/A	N/A	N/A	N/A
Avg. Combined Illinois Handle on Live + Dark Days	94,843	35,113	50,442	180,398
Avg. Ill. Handle on Out-of-State Races on Live+Dark Days	0	0	0	0
Avg. Out-of-State Handle (Commingled) on Illinois Programs				0
Average Total Meet Handle on Live Days				180,398
Average Total Meet Handle on Live + Dark Days				180,398
Combined Illinois Handle	\$ 569,055	210,680	302,652	1,082,387
-Commission (Take Out)	\$ 113,106	42,270	61,737	217,113
Track Commission *	\$ 51,520	19,227	40,452	111,199
Purses Earned **	\$ 51,520	19,227	12,483	83,230
Out-of-State Simulcast Fee (3%)	\$ 0	0	0	0
Privilege Tax	\$ 10,066	3,816	5,775	19,657
Horse Racing Tax Allocation	\$ 0	0	3,027	3,027
Public Pool	\$ 455,949	168,410	240,915	865,274
-Breakage	\$ 5,570	1,799	2,778	10,147
Race Track Improvement Fund	\$ 2,785	900	1,389	5,074
Breakage to General Revenue	\$ 2,785	900	1,389	5,074
-Surcharge	\$ 4,439	2,561	6,149	13,149
Payout to Public	\$ 445,940	164,050	231,988	841,978
Privilege Tax	\$ 10,066	3,816	5,775	19,657
Breakage	\$ 5,570	1,799	2,778	10,147
Horse Racing Tax Allocation	\$ 0	0	3,027	3,027
License Fee	\$ 0	0	0	0
License Fee - Daily Handle	\$ 0	0	0	0
Admission Tax	\$ 0	0	0	0
Uncashed Tickets (1996)	\$ 2,244	831	1,193	4,268
TOTAL REVENUE TO STATE	\$ 17,880	6,446	12,773	37,099
AVG. DAILY STATE REVENUE	\$ 2,280	1,074	2,129	6,183

* Included are commissions earned by intertrack and off-track outlets.

** Included are purses earned for Fairmount Park and race meets affiliated with intertrack outlets.

ILLINOIS STATE FAIR - DUQUOIN
AUGUST 31 - SEPTEMBER 5

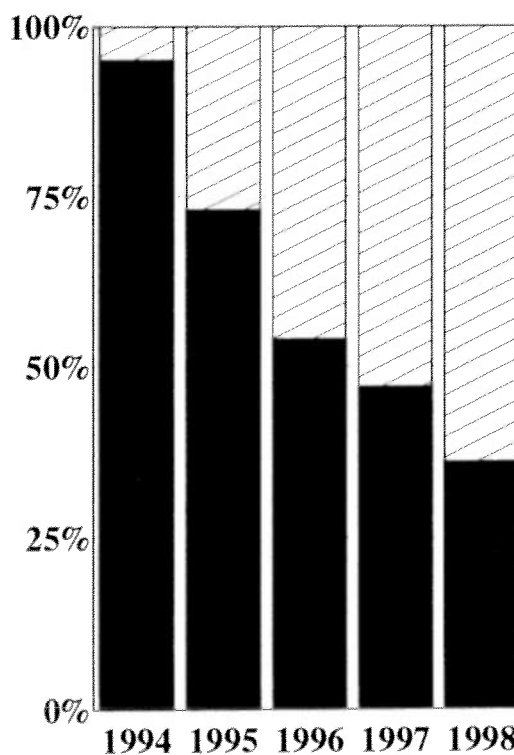
	ON TRACK AT DUQUOIN	INTER TRACK ON DUQUOIN	OFF TRACK ON DUQUOIN	ALL LOCATIONS ON DUQUOIN
HARNESS MEET				
Live Programs Raced	5	30	100	135
Total Live + Dark Days	5	0	0	5
Live Races Run	50	0	0	50
Attendance	N/A	N/A	N/A	0
Purse Distribution				1,388,500
Illinois Handle on Illinois Races	303,611	121,506	176,087	601,204
Illinois Handle on Out-of-State Races on Live Days	0	0	0	0
Combined Illinois Handle on Live Days	303,611	121,506	176,087	601,204
Illinois Handle on Out-of-State Races on Dark Days	0	0	0	0
Combined Illinois Handle on Live + Dark Days	303,611	121,506	176,087	601,204
Percentage of Total Combined Illinois Handle	50.50%	20.21%	29.29%	
Ill. Handle on Out-of-State Races on Live + Dark Days	0	0	0	0
Out-of-State Handle (Commingled) on Illinois Programs				120,571
Total Meet Handle on Live Days				721,775
Total Meet Handle on Live + Dark Days				721,775
Average Illinois Handle on Illinois Races	60,722	24,301	35,217	120,241
Avg. Ill. Handle on Out-of-State Races on Live Days	0	0	0	0
Average Combined Illinois Handle on Live Days	60,722	24,301	35,217	120,241
Avg. Ill. Handle on Out-of-State Races on Dark Days	N/A	N/A	N/A	N/A
Avg. Combined Illinois Handle on Live + Dark Days	60,722	24,301	35,217	120,241
Avg. Ill. Handle on OutofState Races on Live+Dark Days	0	0	0	0
Avg. Out-of-State Handle (Commingled) on Illinois Programs				24,114
Average Total Meet Handle on Live Days				144,355
Average Total Meet Handle on Live + Dark Days				144,355
Combined Illinois Handle	\$ 303,611	121,506	176,087	601,204
-Commission (Take Out)	\$ 58,920	24,096	35,389	118,405
Track Commission *	\$ 26,977	10,993	23,180	61,150
Purses Earned **	\$ 26,977	10,993	7,263	45,233
Out-of-State Simulcast Fee (3%)	\$ 0	0	0	0
Privilege Tax	\$ 4,966	2,110	3,186	10,262
Horse Racing Tax Allocation	\$ 0	0	1,760	1,760
Public Pool	\$ 244,691	97,410	140,698	482,799
-Breakage	\$ 2,288	899	1,127	4,314
Race Track Improvement Fund	\$ 1,144	450	564	2,157
Breakage to General Revenue	\$ 1,144	450	564	2,157
-Surcharge	\$ 2,543	1,409	3,272	7,224
Payout to Public	\$ 239,860	95,102	136,299	471,261
Privilege Tax	\$ 4,966	2,110	3,186	10,262
Breakage	\$ 2,288	899	1,127	4,314
Horse Racing Tax Allocation	\$ 0	0	1,760	1,760
License Fee	\$ 0	0	0	0
License Fee - Daily Handle	\$ 0	0	0	0
Admission Tax	\$ 0	0	0	0
Uncashed Tickets (1996)	\$ 961	385	557	1,903
TOTAL REVENUE TO STATE	\$ 8,215	3,394	6,630	18,239
AVG. DAILY STATE REVENUE	\$ 1,643	679	1,326	3,648

* Included are commissions earned by intertrack and off-track outlets.

** Included are purses earned for Fairmount Park and race meets affiliated with intertrack outlets.

ILLINOIS HANDLE

ILLINOIS RACES %
 SIMULCAST RACES %



SIMULCAST RACES %	5	27	46	53	64
ILLINOIS RACES %	95	73	54	47	36

Full Card Simulcasting Began June 1, 1995

SUMMARY OF INTERTRACK WAGERING STATISTICS

ARLINGTON INTERNATIONAL RACECOURSE
AS AN INTERTRACK SITE

	ILLINOIS LIVE	SIMUL- CASTS	TOTAL
Programs Wagered	766	6,612	7,378
Mutuel Handle	35,340,406	89,415,155	124,755,561
Program Average	46,136	13,523	162,866
Attendance	356,035	0	356,035
Program Average	465	0	465
Handle	35,340,406	89,415,155	124,755,561
-Commission (Take Out)	7,367,059	18,218,955	25,586,014
Track Commission	3,315,364	6,863,312	10,178,676
Purses Earned	3,315,364	6,863,312	10,178,676
Out-of-State Sim. Fee	0	2,682,455	2,682,455
Privilege Tax	736,331	1,809,876	2,546,207
Public Pool	27,973,347	71,196,200	99,169,547
-Breakage	181,332	469,368	650,700
RTIF	90,666	234,684	325,350
Breakage to Gen. Rev.	90,666	234,684	325,350
-Surcharge	432,380	1,068,712	1,501,092
Payout to Public	27,359,635	69,658,120	97,017,755
Privilege Tax	736,331	1,809,876	2,546,207
Breakage	181,332	469,368	650,700
Admission Tax	17,557	0	17,557
TOTAL STATE REVENUE	<u>935,220</u>	<u>2,279,244</u>	<u>3,214,464</u>

BALMORAL PARK
AS AN INTERTRACK SITE

	ILLINOIS LIVE	SIMUL- CASTS	TOTAL
Programs Wagered	580	4,737	5,317
Mutuel Handle	5,372,412	11,627,345	16,999,757
Program Average	9,263	2,455	29,310
Attendance	77,279	0	77,279
Program Average	133	0	133
Handle	5,372,412	11,627,345	16,999,757
-Commission (Take Out)	1,116,958	2,394,227	3,511,185
Track Commission	502,860	900,615	1,403,475
Purses Earned	502,860	900,615	1,403,475
Out-of-State Sim. Fee	0	348,820	348,820
Privilege Tax	111,238	244,177	355,415
Public Pool	4,255,454	9,233,118	13,488,572
-Breakage	29,968	61,153	91,121
RTIF	14,984	30,577	45,561
Breakage to Gen. Rev.	14,984	30,577	45,561
-Surcharge	65,635	138,058	203,693
Payout to Public	4,159,851	9,033,907	13,193,758
Privilege Tax	111,238	244,177	355,415
Breakage	29,968	61,153	91,121
Admission Tax	7,803	0	7,803
TOTAL STATE REVENUE	<u>149,009</u>	<u>305,330</u>	<u>454,339</u>

FAIRMOUNT PARK
AS AN INTERTRACK SITE

	ILLINOIS LIVE	SIMUL- CASTS	TOTAL
Programs Wagered	551	6,543	7,094
Mutuel Handle	10,576,335	44,952,048	55,528,383
Program Average	19,195	6,870	100,777
Attendance	81,142	0	81,142
Program Average	147	0	147
Handle	10,576,335	44,952,048	55,528,383
-Commission (Take Out)	2,199,444	9,081,812	11,281,256
Track Commission	990,579	3,428,305	4,418,884
Purses Earned	990,579	3,428,305	4,418,884
Out-of-State Sim. Fee	0	1,348,561	1,348,561
Privilege Tax	218,286	876,641	1,094,927
Public Pool	8,376,891	35,870,236	44,247,127
-Breakage	54,917	248,703	303,620
RTIF	27,459	124,352	151,810
Breakage to Gen. Rev.	27,459	124,352	151,810
-Surcharge	125,533	534,896	660,429
Payout to Public	8,196,441	35,086,637	43,283,078
Privilege Tax	218,286	876,641	1,094,927
Breakage	54,917	248,703	303,620
Admission Tax	8,149	0	8,149
TOTAL STATE REVENUE	<u>281,352</u>	<u>1,125,344</u>	<u>1,406,696</u>

HAWTHORNE RACE COURSE
AS AN INTERTRACK SITE

	ILLINOIS LIVE	SIMUL- CASTS	TOTAL
Programs Wagered	307	1,580	1,887
Mutuel Handle	7,325,916	8,781,900	16,107,816
Program Average	23,863	5,558	52,468
Attendance	89,274	0	89,274
Program Average	291	0	291
Handle	7,325,916	8,781,900	16,107,816
-Commission (Take Out)	1,504,372	1,755,402	3,259,774
Track Commission	679,290	663,074	1,342,364
Purses Earned	679,290	663,074	1,342,364
Out-of-State Sim. Fee	0	263,457	263,457
Privilege Tax	145,792	165,797	311,589
Public Pool	5,821,544	7,026,498	12,848,042
-Breakage	43,759	54,548	98,307
RTIF	21,880	27,274	49,154
Breakage to Gen. Rev.	21,880	27,274	49,154
-Surcharge	84,818	102,928	187,746
Payout to Public	5,692,967	6,869,022	12,561,989
Privilege Tax	145,792	165,797	311,589
Breakage	43,759	54,548	98,307
Admission Tax	4,537	0	4,537
TOTAL STATE REVENUE	<u>194,088</u>	<u>220,345</u>	<u>414,433</u>

SUMMARY OF INTERTRACK WAGERING STATISTICS

MAYWOOD PARK
AS AN INTERTRACK SITEQUAD CITY DOWNS
AS AN INTERTRACK SITE

ILLINOIS LIVE	SIMUL- CASTS	TOTAL	ILLINOIS LIVE	SIMUL- CASTS	TOTAL	
627	5,282	5,909	766	6,604	7,370	Programs Wagered
23,071,471	44,660,819	67,732,290	4,833,206	9,853,874	14,687,080	Mutuel Handle
36,797	8,455	108,026	6,310	1,492	19,174	Program Average
268,359	0	268,359	111,388	0	111,388	Attendance
428	0	428	145	0	145	Program Average
23,071,471	44,660,819	67,732,290	4,833,206	9,853,874	14,687,080	Handle
4,753,081	9,024,900	13,777,981	1,022,327	2,010,656	3,032,983	-Commission (Take Out)
2,144,926	3,406,121	5,551,047	458,423	757,224	1,215,647	Track Commission
2,144,926	3,406,121	5,551,047	458,423	757,224	1,215,647	Purses Earned
0	1,339,825	1,339,825	0	295,616	295,616	Out-of-State Sim. Fee
463,229	872,833	1,336,062	105,481	200,592	306,073	Privilege Tax
18,318,390	35,635,919	53,954,309	3,810,879	7,843,218	11,654,097	Public Pool
122,466	248,049	370,515	26,557	59,676	86,233	-Breakage
61,233	124,025	185,258	13,279	29,838	43,117	RTIF
61,233	124,025	185,258	13,279	29,838	43,117	Breakage to Gen. Rev.
271,859	521,368	793,227	60,686	118,302	178,988	-Surcharge
17,924,065	34,866,502	52,790,567	3,723,636	7,665,240	11,388,876	Payout to Public
463,229	872,833	1,336,062	105,481	200,592	306,073	Privilege Tax
122,466	248,049	370,515	26,557	59,676	86,233	Breakage
18,081	0	18,081	0	0	0	Admission Tax
<u>603,776</u>	<u>1,120,882</u>	<u>1,724,658</u>	<u>132,038</u>	<u>260,268</u>	<u>392,306</u>	TOTAL STATE REVENUE

SPORTSMAN'S PARK
AS AN INTERTRACK SITE

ILLINOIS LIVE	SIMUL- CASTS	TOTAL	
244	1,587	1,831	Programs Wagered
6,222,861	10,816,645	17,039,506	Mutuel Handle
25,504	6,816	69,834	Program Average
83,707	0	83,707	Attendance
343	0	343	Program Average
6,222,861	10,816,645	17,039,506	Handle
1,279,524	2,148,849	3,428,373	-Commission (Take Out)
577,430	812,191	1,389,621	Track Commission
577,430	812,191	1,389,621	Purses Earned
0	324,499	324,499	Out-of-State Sim. Fee
124,664	199,968	324,632	Privilege Tax
4,943,337	8,667,796	13,611,133	Public Pool
36,628	69,363	105,991	-Breakage
18,314	34,682	52,996	RTIF
18,314	34,682	52,996	Breakage to Gen. Rev.
72,837	128,306	201,143	-Surcharge
4,833,872	8,470,127	13,303,999	Payout to Public
124,664	199,968	324,632	Privilege Tax
36,628	69,363	105,991	Breakage
4,909	0	4,909	Admission Tax
<u>166,201</u>	<u>269,331</u>	<u>435,532</u>	TOTAL STATE REVENUE

SUMMARY OF OFF TRACK WAGERING STATISTICS

WAUKEGAN
ARLINGTON INT'L RACECOURSEWEED STREET
ARLINGTON INT'L RACECOURSE

	ILLINOIS LIVE	SIMUL- CASTS	TOTAL	ILLINOIS LIVE	SIMUL- CASTS	TOTAL
Programs Wagered	766	6,607	7,373	764	6,591	7,355
Mutuel Handle	10,895,898	32,370,913	43,266,811	16,357,513	50,840,292	67,197,805
Program Average	14,224	4,899	56,484	21,410	7,714	87,955
Handle	10,895,898	32,370,913	43,266,811	16,357,513	50,840,292	67,197,805
-Commission (Take Out)	2,256,953	6,582,695	8,839,648	3,373,531	10,240,003	13,613,534
Track Commission	1,490,379	2,323,175	3,813,554	2,226,458	3,611,531	5,837,989
Purses Earned	435,836	2,323,175	2,759,011	654,301	3,611,531	4,265,832
Out-of-State Sim. Fee	0	971,127	971,127	0	1,525,209	1,525,209
Privilege Tax	221,779	641,509	863,288	329,197	983,329	1,312,526
HRTA	108,959	323,709	432,668	163,575	508,403	671,978
Public Pool	8,638,945	25,788,218	34,427,163	12,983,982	40,600,289	53,584,271
-Breakage	53,783	158,252	212,035	88,002	272,863	360,865
RTIF	26,892	79,126	106,018	44,001	136,432	180,433
Breakage to Gen. Rev.	26,892	79,126	106,018	44,001	136,432	180,433
-Surcharge	211,257	631,682	842,939	324,589	1,000,589	1,325,178
Payout to Public	8,373,905	24,998,284	33,372,189	12,571,391	39,326,837	51,898,228
Privilege Tax	221,779	641,509	863,288	329,197	983,329	1,312,526
Breakage	53,783	158,252	212,035	88,002	272,863	360,865
HRTA	108,959	323,709	432,668	163,575	508,403	671,978
TOTAL STATE REVENUE	<u>384,521</u>	<u>1,123,470</u>	<u>1,507,991</u>	<u>580,774</u>	<u>1,764,595</u>	<u>2,345,369</u>

111TH & CORLISS
BALMORAL RACING CLUBDANVILLE
BALMORAL RACING CLUB

	ILLINOIS LIVE	SIMUL- CASTS	TOTAL	ILLINOIS LIVE	SIMUL- CASTS	TOTAL
Programs Wagered	766	6,589	7,355	766	6,567	7,333
Mutuel Handle	20,055,964	36,955,017	57,010,981	1,952,651	6,183,124	8,135,775
Program Average	26,183	5,609	74,427	2,549	942	10,621
Handle	20,055,964	36,955,017	57,010,981	1,952,651	6,183,124	8,135,775
-Commission (Take Out)	4,238,403	7,598,321	11,836,724	416,064	1,302,346	1,718,410
Track Commission	2,799,382	2,678,687	5,478,069	274,972	458,121	733,093
Purses Earned	802,239	2,678,687	3,480,926	78,106	458,121	536,227
Out-of-State Sim. Fee	0	1,108,651	1,108,651	0	185,494	185,494
Privilege Tax	436,222	762,746	1,198,968	43,459	138,779	182,238
HRTA	200,560	369,550	570,110	19,527	61,831	81,358
Public Pool	15,817,561	29,356,696	45,174,257	1,536,587	4,880,778	6,417,365
-Breakage	86,816	166,452	253,268	8,737	24,521	33,258
RTIF	43,408	83,226	126,634	4,369	12,261	16,629
Breakage to Gen. Rev.	43,408	83,226	126,634	4,369	12,261	16,629
-Surcharge	378,743	712,545	1,091,288	36,356	115,844	152,200
Payout to Public	15,352,002	28,477,699	43,829,701	1,491,494	4,740,413	6,231,907
Privilege Tax	436,222	762,746	1,198,968	43,459	138,779	182,238
Breakage	86,816	166,452	253,268	8,737	24,521	33,258
HRTA	200,560	369,550	570,110	19,527	61,831	81,358
TOTAL STATE REVENUE	<u>723,598</u>	<u>1,298,748</u>	<u>2,022,346</u>	<u>71,723</u>	<u>225,131</u>	<u>296,854</u>

SUMMARY OF OFF TRACK WAGERING STATISTICS

CHAMPAIGN
BALMORAL RACING CLUBBLOOMINGTON
BALMORAL RACING CLUB

ILLINOIS LIVE	SIMUL- CASTS	TOTAL	ILLINOIS LIVE	SIMUL- CASTS	TOTAL	
766	6,585	7,351	766	6,587	7,353	Programs Wagered
2,549,275	7,323,749	9,873,024	2,725,640	8,209,512	10,935,152	Mutuel Handle
3,328	1,112	12,889	3,558	1,246	14,276	Program Average
2,549,275	7,323,749	9,873,024	2,725,640	8,209,512	10,935,152	Handle
538,385	1,525,087	2,063,472	570,759	1,679,507	2,250,266	-Commission (Take Out)
305,000	537,726	842,726	322,572	592,590	915,162	Track Commission
152,957	537,726	690,683	163,538	592,590	756,128	Purses Earned
0	219,712	219,712	0	246,285	246,285	Out-of-State Sim. Fee
54,935	156,686	211,621	57,393	165,947	223,340	Privilege Tax
25,493	73,237	98,730	27,256	82,095	109,351	HRTA
2,010,890	5,798,662	7,809,552	2,154,881	6,530,005	8,684,886	Public Pool
11,173	29,816	40,989	13,174	41,418	54,592	-Breakage
5,587	14,908	20,495	6,587	20,709	27,296	RTIF
5,587	14,908	20,495	6,587	20,709	27,296	Breakage to Gen. Rev.
50,626	141,312	191,938	52,926	156,838	209,764	-Surcharge
1,949,091	5,627,534	7,576,625	2,088,781	6,331,749	8,420,530	Payout to Public
54,935	156,686	211,621	57,393	165,947	223,340	Privilege Tax
11,173	29,816	40,989	13,174	41,418	54,592	Breakage
25,493	73,237	98,730	27,256	82,095	109,351	HRTA
<u>91,601</u>	<u>259,739</u>	<u>351,340</u>	<u>97,823</u>	<u>289,460</u>	<u>387,283</u>	TOTAL STATE REVENUE

SPRINGFIELD
OGDEN-FAIRMOUNTGRAYVILLE
OGDEN-FAIRMOUNT

ILLINOIS LIVE	SIMUL- CASTS	TOTAL	ILLINOIS LIVE	SIMUL- CASTS	TOTAL	
766	6,498	7,264	766	6,273	7,039	Programs Wagered
4,650,993	13,545,154	18,196,147	1,511,171	5,209,279	6,720,450	Mutuel Handle
6,072	2,085	23,755	1,973	830	8,773	Program Average
4,650,993	13,545,154	18,196,147	1,511,171	5,209,279	6,720,450	Handle
1,007,684	2,877,367	3,885,051	308,114	1,038,782	1,346,896	-Commission (Take Out)
666,333	1,012,094	1,678,427	203,055	366,266	569,321	Track Commission
186,040	1,012,094	1,198,134	60,447	366,266	426,713	Purses Earned
0	406,355	406,355	0	156,278	156,278	Out-of-State Sim. Fee
108,801	311,372	420,173	29,500	97,879	127,379	Privilege Tax
46,510	135,452	181,962	15,112	52,093	67,205	HRTA
3,643,309	10,667,787	14,311,096	1,203,057	4,170,497	5,373,554	Public Pool
17,022	45,633	62,655	9,158	31,114	40,272	-Breakage
8,511	22,817	31,328	4,579	15,557	20,136	RTIF
8,511	22,817	31,328	4,579	15,557	20,136	Breakage to Gen. Rev.
89,500	264,622	354,122	30,355	102,994	133,349	-Surcharge
3,536,787	10,357,532	13,894,319	1,163,544	4,036,389	5,199,933	Payout to Public
108,801	311,372	420,173	29,500	97,879	127,379	Privilege Tax
17,022	45,633	62,655	9,158	31,114	40,272	Breakage
46,510	135,452	181,962	15,112	52,093	67,205	HRTA
<u>172,333</u>	<u>492,457</u>	<u>664,790</u>	<u>53,770</u>	<u>181,086</u>	<u>234,856</u>	TOTAL STATE REVENUE

SUMMARY OF OFF TRACK WAGERING STATISTICS

EFFINGHAM
OGDEN-FAIRMOUNTCARBONDALE
OGDEN-FAIRMOUNT

	EFFINGHAM OGDEN-FAIRMOUNT			CARBONDALE OGDEN-FAIRMOUNT		
	ILLINOIS LIVE	SIMUL- CASTS	TOTAL	ILLINOIS LIVE	SIMUL- CASTS	TOTAL
Programs Wagered	766	6,013	6,779	766	6,305	7,071
Mutuel Handle	1,590,914	3,172,105	4,763,019	1,942,630	5,480,970	7,423,600
Program Average	2,077	528	6,218	2,536	869	9,691
Handle	1,590,914	3,172,105	4,763,019	1,942,630	5,480,970	7,423,600
-Commission (Take Out)	336,620	651,554	988,174	400,605	1,121,169	1,521,774
Track Commission	222,053	229,136	451,189	264,398	395,465	659,863
Purses Earned	63,637	229,136	292,773	77,705	395,465	473,170
Out-of-State Sim. Fee	0	95,163	95,163	0	164,429	164,429
Privilege Tax	35,021	66,398	101,419	39,076	111,000	150,076
HRTA	15,909	31,721	47,630	19,426	54,810	74,236
Public Pool	1,254,294	2,520,551	3,774,845	1,542,025	4,359,801	5,901,826
-Breakage	8,002	17,041	25,043	10,227	25,298	35,525
RTIF	4,001	8,521	12,522	5,114	12,649	17,763
Breakage to Gen. Rev.	4,001	8,521	12,522	5,114	12,649	17,763
-Surcharge	31,200	61,359	92,559	38,503	108,876	147,379
Payout to Public	1,215,092	2,442,151	3,657,243	1,493,295	4,225,627	5,718,922
Privilege Tax	35,021	66,398	101,419	39,076	111,000	150,076
Breakage	8,002	17,041	25,043	10,227	25,298	35,525
HRTA	15,909	31,721	47,630	19,426	54,810	74,236
TOTAL STATE REVENUE	<u>58,932</u>	<u>115,160</u>	<u>174,092</u>	<u>68,729</u>	<u>191,108</u>	<u>259,837</u>

ALTON-BELLE
OGDEN-FAIRMOUNTSTATE & LAKE
HAWTHORNE RACE COURSE

	ALTON-BELLE OGDEN-FAIRMOUNT			STATE & LAKE HAWTHORNE RACE COURSE		
	ILLINOIS LIVE	SIMUL- CASTS	TOTAL	ILLINOIS LIVE	SIMUL- CASTS	TOTAL
Programs Wagered	766	6,465	7,231	766	6,610	7,376
Mutuel Handle	4,254,475	11,735,737	15,990,212	12,970,241	33,356,781	46,327,022
Program Average	5,554	1,815	20,875	16,932	5,046	60,479
Handle	4,254,475	11,735,737	15,990,212	12,970,241	33,356,781	46,327,022
-Commission (Take Out)	883,877	2,371,376	3,255,253	2,709,811	6,780,309	9,490,120
Track Commission	583,768	836,716	1,420,484	1,789,430	2,390,928	4,180,358
Purses Earned	170,179	836,716	1,006,895	518,810	2,390,928	2,909,738
Out-of-State Sim. Fee	0	352,072	352,072	0	1,000,703	1,000,703
Privilege Tax	87,385	228,515	315,900	271,869	664,182	936,051
HRTA	42,545	117,357	159,902	129,702	333,568	463,270
Public Pool	3,370,598	9,364,361	12,734,959	10,260,430	26,576,472	36,836,902
-Breakage	22,300	65,337	87,637	67,554	184,547	252,101
RTIF	11,150	32,669	43,819	33,777	92,274	126,051
Breakage to Gen. Rev.	11,150	32,669	43,819	33,777	92,274	126,051
-Surcharge	83,773	228,940	312,713	253,610	649,576	903,186
Payout to Public	3,264,525	9,070,084	12,334,609	9,939,266	25,742,349	35,681,615
Privilege Tax	87,385	228,515	315,900	271,869	664,182	936,051
Breakage	22,300	65,337	87,637	67,554	184,547	252,101
HRTA	42,545	117,357	159,902	129,702	333,568	463,270
TOTAL STATE REVENUE	<u>152,230</u>	<u>411,209</u>	<u>563,439</u>	<u>469,125</u>	<u>1,182,297</u>	<u>1,651,422</u>

SUMMARY OF OFF TRACK WAGERING STATISTICS

OAK BROOK TERRACE
HAWTHORNE RACE COURSE

ILLINOIS LIVE	SIMUL- CASTS	TOTAL
766	6,611	7,377
22,084,682	52,547,001	74,631,683
28,831	7,948	97,430
22,084,682	52,547,001	74,631,683
4,569,801	10,688,077	15,257,878
3,015,948	3,769,465	6,785,413
883,387	3,769,465	4,652,852
0	1,576,410	1,576,410
449,619	1,047,267	1,496,886
220,847	525,470	746,317
17,514,881	41,858,924	59,373,805
118,539	273,811	392,350
59,270	136,906	196,175
59,270	136,906	196,175
428,619	1,025,582	1,454,201
16,967,723	40,559,531	57,527,254
449,619	1,047,267	1,496,886
118,539	273,811	392,350
220,847	525,470	746,317
<u>789,005</u>	<u>1,846,548</u>	<u>2,635,553</u>

WEST JACKSON
MAYWOOD PARK TROT

ILLINOIS LIVE	SIMUL- CASTS	TOTAL
766	6,611	7,377 Programs Wagered
11,047,669	29,329,842	40,377,511 Mutuel Handle
14,423	4,437	52,712 Program Average
11,047,669	29,329,842	40,377,511 Handle
2,283,968	5,924,315	8,208,283 -Commission (Take Out)
1,507,189	2,090,075	3,597,264 Track Commission
441,907	2,090,075	2,531,982 Purses Earned
0	879,895	879,895 Out-of-State Sim. Fee
224,395	570,972	795,367 Privilege Tax
110,477	293,298	403,775 HRTA
8,763,701	23,405,527	32,169,228 Public Pool
59,977	158,855	218,832 -Breakage
29,989	79,428	109,416 RTIF
29,989	79,428	109,416 Breakage to Gen. Rev.
215,908	570,050	785,958 -Surcharge
8,487,816	22,676,622	31,164,438 Payout to Public
224,395	570,972	795,367 Privilege Tax
59,977	158,855	218,832 Breakage
110,477	293,298	403,775 HRTA
<u>394,849</u>	<u>1,023,125</u>	<u>1,417,974</u> TOTAL STATE REVENUE

NORTH AURORA
MAYWOOD PARK TROT

ILLINOIS LIVE	SIMUL- CASTS	TOTAL
766	6,583	7,349
8,925,024	19,201,281	28,126,305
11,651	2,917	36,718
8,925,024	19,201,281	28,126,305
1,846,220	3,876,959	5,723,179
1,217,752	1,367,403	2,585,155
357,001	1,367,403	1,724,404
0	576,038	576,038
182,217	374,102	556,319
89,250	192,013	281,263
7,078,804	15,324,322	22,403,126
48,137	104,772	152,909
24,069	52,386	76,455
24,069	52,386	76,455
173,578	377,116	550,694
6,857,089	14,842,434	21,699,523
182,217	374,102	556,319
48,137	104,772	152,909
89,250	192,013	281,263
<u>319,604</u>	<u>670,887</u>	<u>990,491</u>

EMPRESS (JOLIET)
MAYWOOD PARK TROT

ILLINOIS LIVE	SIMUL- CASTS	TOTAL
762	6,543	7,305 Programs Wagered
2,977,088	6,910,127	9,887,215 Mutuel Handle
3,907	1,056	12,975 Program Average
2,977,088	6,910,127	9,887,215 Handle
615,304	1,402,506	2,017,810 -Commission (Take Out)
346,287	494,453	840,740 Track Commission
178,625	494,453	673,078 Purses Earned
0	207,304	207,304 Out-of-State Sim. Fee
60,621	137,195	197,816 Privilege Tax
29,771	69,101	98,872 HRTA
2,361,784	5,507,621	7,869,405 Public Pool
16,926	38,298	55,224 -Breakage
8,463	19,149	27,612 RTIF
8,463	19,149	27,612 Breakage to Gen. Rev.
58,138	133,921	192,059 -Surcharge
2,286,720	5,335,402	7,622,122 Payout to Public
60,621	137,195	197,816 Privilege Tax
16,926	38,298	55,224 Breakage
29,771	69,101	98,872 HRTA
<u>107,318</u>	<u>244,594</u>	<u>351,912</u> TOTAL STATE REVENUE

SUMMARY OF OFF TRACK WAGERING STATISTICS

JOLIET
NATIONAL JOCKEY CLUBCRESTWOOD
NATIONAL JOCKEY CLUB

	ILLINOIS LIVE	SIMUL- CASTS	TOTAL	ILLINOIS LIVE	SIMUL- CASTS	TOTAL
Programs Wagered	766	6,603	7,369	766	6,597	7,363
Mutuel Handle	5,708,460	13,152,897	18,861,357	24,280,820	44,279,273	68,560,093
Program Average	7,452	1,992	24,623	31,698	6,712	89,504
Handle	5,708,460	13,152,897	18,861,357	24,280,820	44,279,273	68,560,093
-Commission (Take Out)	1,186,894	2,685,502	3,872,396	5,033,113	9,046,804	14,079,917
Track Commission	783,257	946,429	1,729,686	3,319,369	3,186,870	6,506,239
Purses Earned	228,338	946,429	1,174,767	971,233	3,186,870	4,158,103
Out-of-State Sim. Fee	0	394,587	394,587	0	1,328,378	1,328,378
Privilege Tax	118,214	266,528	384,742	499,703	901,893	1,401,596
HRTA	57,085	131,529	188,614	242,808	442,793	685,601
Public Pool	4,521,566	10,467,395	14,988,961	19,247,707	35,232,469	54,480,176
-Breakage	28,540	67,563	96,103	126,005	214,048	340,053
RTIF	14,270	33,782	48,052	63,003	107,024	170,027
Breakage to Gen. Rev.	14,270	33,782	48,052	63,003	107,024	170,027
-Surcharge	110,088	257,076	367,164	469,991	859,562	1,329,553
Payout to Public	4,382,938	10,142,756	14,525,694	18,651,711	34,158,859	52,810,570
Privilege Tax	118,214	266,528	384,742	499,703	901,893	1,401,596
Breakage	28,540	67,563	96,103	126,005	214,048	340,053
HRTA	57,085	131,529	188,614	242,808	442,793	685,601
TOTAL STATE REVENUE	<u>203,839</u>	<u>465,620</u>	<u>669,459</u>	<u>868,516</u>	<u>1,558,734</u>	<u>2,427,250</u>

PERU
NATIONAL JOCKEY CLUBROCKFORD
QUAD CITY DOWNS

	ILLINOIS LIVE	SIMUL- CASTS	TOTAL	ILLINOIS LIVE	SIMUL- CASTS	TOTAL
Programs Wagered	766	6,546	7,312	766	6,591	7,357
Mutuel Handle	2,111,497	3,841,720	5,953,217	7,664,033	16,330,897	23,994,930
Program Average	2,757	587	7,772	10,005	2,478	31,325
Handle	2,111,497	3,841,720	5,953,217	7,664,033	16,330,897	23,994,930
-Commission (Take Out)	441,738	776,526	1,218,264	1,598,754	3,346,367	4,945,121
Track Commission	249,516	274,027	523,543	1,055,338	1,179,941	2,235,279
Purses Earned	126,690	274,027	400,717	306,561	1,179,941	1,486,502
Out-of-State Sim. Fee	0	115,252	115,252	0	489,927	489,927
Privilege Tax	44,417	74,803	119,220	160,215	333,249	493,464
HRTA	21,115	38,417	59,532	76,640	163,309	239,949
Public Pool	1,669,759	3,065,194	4,734,953	6,065,279	12,984,530	19,049,809
-Breakage	10,565	20,089	30,654	40,917	77,293	118,210
RTIF	5,283	10,045	15,327	20,459	38,647	59,105
Breakage to Gen. Rev.	5,283	10,045	15,327	20,459	38,647	59,105
-Surcharge	40,715	74,202	114,917	150,380	317,522	467,902
Payout to Public	1,618,479	2,970,903	4,589,382	5,873,982	12,589,715	18,463,697
Privilege Tax	44,417	74,803	119,220	160,215	333,249	493,464
Breakage	10,565	20,089	30,654	40,917	77,293	118,210
HRTA	21,115	38,417	59,532	76,640	163,309	239,949
TOTAL STATE REVENUE	<u>76,097</u>	<u>133,309</u>	<u>209,406</u>	<u>277,772</u>	<u>573,851</u>	<u>851,623</u>

1998 MAJOR STAKES RACES

THOROUGHBRED

DATE	Sportsman's Park	PURSE	HORSE	JOCKEY
May 9	Illinois Derby	\$500,000	Yarrow Brac	W. Martinez
May 3	Sixty Sails Handicap	\$300,000	Glitter Woman	G. Stevens
May 23	National Jockey Club Handicap	\$200,000	Polar Expedition	M. Guidry
April 25	National Jockey Club Oaks	\$150,000	Victorica	E. Coa
June 28	Sportsman's Park Breeders' Cup	\$100,000	Bucks Nephew	J. L. Diaz
Hawthorne Race Course				
October 10	Hawthorne Gold Cup	\$400,000	Awesome Again	P. Day
October 11	Hawthorne Derby	\$250,000	Stay Sound	T. D'Amico
July 25	Robert F. Carey Memorial	\$150,000	Soviet Line	S. Sellers
November 28	Illinois Breeders' Futurity	\$122,100	No Dice	C. Emigh
November 21	Illinois Breeders' Debutante	\$110,725	Faccia Bella	K. Sampson
Fairmount Park				
June 6	Bungalow Handicap	\$25,900	Silver Victoria	R. Trader
July 4	Pete Condellone Handicap	\$25,900	Sparky Sam	R. Trader
August 8	Slight in the Rear Stakes	\$25,900	Galaxy Girl	M. Gale
July 18	Tex's Zing Stakes	\$25,700	Zie Life	M. Gale
September 7	All Sold Out Stakes	\$25,700	Honey's Angle	B. C. Patin
September 12	Marluels' Troy Stakes	\$25,700	Nervous Moment	M. Guidry

HARNESS

DATE	Balmoral Park	PURSE	HORSE	DRIVER
September 19	Orange and Blue 2-Year-Old Colt Pace	\$300,000	Fox Valley Admiral	J. Anderson
September 19	Orange and Blue 2-Year-Old Filly Pace	\$260,000	Juxtaposition	S. Widger
July 25	American National 3-Year-Old Colt Pace	\$255,300	Artiscape	Da. Magee
August 22	American National Aged Pace	\$204,600	Tune Town	D. Chupp
August 29	American National 3-Year-Old Colt Trot	\$170,500	David Raymond	C. Manzi
Maywood Park				
December 4	Windy City Pace	\$270,000	Take Down The Flag	P. MacDonell
November 13	Maywood Pace	\$84,000	Heat On The Street	Da. Magee
May 8	Cinderella	\$75,000	Something Present	De. Magee
October 13	Abe Lincoln (1st Div.)	\$60,000	Island Fantasy	Da. Magee
October 13	Abe Lincoln (2nd Div.)	\$60,000	Ft. Apache Hanover	P. MacDonell
Fairmount Park				
November 7	Saluki Series Final	\$20,000	Short People	T. Simmons
December 5	Wrex Vandecar Memorial	\$16,350	Fox Valley Raven	R. Schrock
October 3	Specs Boy Stakes	\$16,200	Wild Turkey	G. Conley

1998 LEADING THOROUGHBRED JOCKEYS/TRAINERS

SPORTSMAN'S PARK						
JOCKEY		MOUNTS	FIRST	SECOND	THIRD	PURSES WON
1.	Mark Guidry	621	121	101	90	\$2,773,649
2.	Ray Sibille	515	79	77	67	\$1,698,433
3.	Donnie Meche	488	71	60	79	\$1,555,804
4.	Jesse Campbell	501	70	67	68	\$1,625,250
5.	Shane Laviolette	499	65	68	49	\$1,600,180
TRAINER		STARTS	FIRST	SECOND	THIRD	% WIN
1.	Richard P. Hazelton	186	33	24	30	17.74%
2.	Gene A. Cilio	162	32	29	23	19.75%
3.	Tom H. Swearingen	142	26	22	25	18.31%
4.	Tom Dorris	249	25	29	34	10.04%
5.	Anthony J. Granitz	128	24	14	20	18.75%

HAWTHORNE RACE COURSE						
JOCKEY		MOUNTS	FIRST	SECOND	THIRD	PURSES WON
1.	Mark Guidry	579	96	79	82	\$2,037,168
2.	Donnie Meche	549	81	88	70	\$1,667,286
3.	Marlon St. Julien	499	80	78	62	\$1,576,973
4.	Carlos Silva	544	70	61	73	\$1,462,455
5.	Randall Meier	552	68	76	60	\$1,506,651
TRAINER		STARTS	FIRST	SECOND	THIRD	% WIN
1.	Hector Magana	208	45	29	20	21.63%
2.	Wayne M. Catalano	175	38	25	22	21.71%
3.	Tom Dorris	264	38	34	33	14.39%
4.	Steven M. Asmussen	200	35	27	26	17.50%
5.	Jere R. Smith, Sr.	136	32	20	21	23.53%

FAIRMOUNT PARK						
JOCKEY		MOUNTS	FIRST	SECOND	THIRD	PURSES WON
1.	Tommy Pompell	724	122	109	117	\$639,856
2.	Mike Gale	703	119	119	106	\$699,462
3.	Jim Bielby	534	85	77	86	\$501,793
4.	Dave Gall	387	76	74	62	\$414,334
5.	Gary Kurek	360	57	40	44	\$319,826
TRAINER		STARTS	FIRST	SECOND	THIRD	% WIN
1.	Stanley Roberts	331	63	50	50	19.03%
2.	Ron Brandenburg	443	53	63	46	11.96%
3.	Raul Martinez	235	45	37	34	19.15%
4.	Frank Randazzo Jr.	204	44	30	29	21.57%
4.	Jerry Hammond	273	44	44	39	16.12%
4.	Eddie Essenpreis	296	44	63	46	14.86%

1998 LEADING HARNESS DRIVERS/TRAINERS

BALMORAL PARK						
	DRIVER	STARTS	FIRST	SECOND	THIRD	PURSES WON
1.	Anthony Morgan	1173	219	178	153	\$1,548,087
2.	Andy Miller	1495	212	207	176	\$1,883,449
3.	Sam Widger	1150	152	148	159	\$1,153,442
4.	Joe Anderson	361	139	45	51	\$1,502,934
5.	Dale Hiteman	1157	130	148	160	\$1,128,752
	TRAINER	STARTS	FIRST	SECOND	THIRD	% WIN
1.	Joe Anderson	503	179	68	66	35.59%
2.	Catrina Rucker	466	59	72	58	12.66%
3.	Gerald Hansen	301	49	47	28	16.28%
4.	James Ellison	201	38	30	29	18.91%
5.	Mitchell MacKenzie	262	37	36	28	14.12%

MAYWOOD PARK						
	DRIVER	STARTS	FIRST	SECOND	THIRD	PURSES WON
1.	Andy Miller	1109	200	147	133	\$1,379,440
2.	Anthony Morgan	895	176	156	103	\$1,065,715
3.	Eric Ledford	661	140	103	87	\$736,867
4.	Dave Magee	739	125	132	95	\$992,982
5.	Dale Hiteman	764	107	93	118	\$757,290
	TRAINER	STARTS	FIRST	SECOND	THIRD	% WIN
1.	Joe Anderson	185	60	31	16	32.43%
2.	David Mc Caffrey	283	46	58	29	16.25%
3.	Catrina Rucker	181	42	28	28	23.20%
4.	Ronnie Roberts	242	40	40	28	16.53%
5.	John Butenschoen	133	28	26	16	21.05%

FAIRMOUNT PARK						
	DRIVER	STARTS	FIRST	SECOND	THIRD	PURSES WON
1.	Tom Simmons	585	113	92	92	\$226,170
2.	Chris Loney	486	98	61	65	\$169,733
3.	Tim Curtin	368	58	56	55	\$139,854
4.	Dave Fagan	291	54	50	49	\$115,127
5.	John Reese	322	52	50	36	\$105,968
	TRAINER	STARTS	FIRST	SECOND	THIRD	% WIN
1.	Brian Loney	288	60	36	44	20.83%
2.	Tom Simmons	194	48	34	28	24.74%
3.	Tom Luther	133	33	29	11	24.81%
4.	Roy Saul	149	31	33	31	20.81%
5.	Bruce Baker	163	30	34	27	18.40%
6.	Jim Wilkerson	175	30	35	32	17.14%

**ILLINOIS DEPARTMENT OF AGRICULTURE
HORSE RACING PROGRAMS
ILLINOIS STANDARD BRED BREEDERS FUND
1998 PURSES AND AWARDS PAID**

<u>TRACK/ASSOCIATION</u>	<u>STAKES AND LATE CLOSERS</u>		<u>OVERNITES</u>		<u>BREEDERS' AWARDS</u>	<u>TOTAL PURSES AND BREEDERS' AWARDS</u>
	<u>RACES</u>	<u>PURSES</u>	<u>RACES</u>	<u>PURSES</u>		
BALMORAL PARK						
<i>Balmoral Racing Club</i>	125	\$3,122,621	726	\$4,551,500	\$592,805	\$8,266,926
MAYWOOD PARK						
<i>Maywood Park Trot, Inc.</i>	30	\$420,490	352	\$1,948,500	\$183,313	\$2,552,303
<i>Egyptian Trotting Assn.</i>	18	\$246,200	211	\$1,401,500	\$136,698	\$1,784,398
<i>Associates Racing Assn.</i>	23	\$572,950	170	\$1,033,500	\$115,862	\$1,722,312
FAIRMOUNT PARK						
<i>Ogden-Fairmount</i>	6	\$61,500	118	\$257,520	\$92,045	\$411,065
ILLINOIS STATE FAIR						
<i>Maywood & Balmoral</i>	58	\$684,000	4	\$4,000	\$4,473	\$692,473
DU QUOIN STATE FAIR						
<i>Maywood & Balmoral</i>	25	\$443,000	4	\$6,500	\$2,310	\$451,810
PARI-MUTUEL TOTALS	285	\$5,550,761	1,585	\$9,203,020	\$1,127,506	\$15,881,287
NON-PARI-MUTUEL RACING						
<u>County Fairs</u>						
<i>Colt Association Racing</i>	541	\$1,047,899				\$1,047,899
<i>ICF Aged Stakes</i>						
<i>Mt. Sterling</i>	7	\$15,800				\$15,800
<i>Jerseyville</i>	4	\$8,000				\$8,000
<i>Downstate Classic</i>						
<i>Decatur (3 Y.O.)</i>	9	\$51,375				\$51,375
<i>Lincoln (2 Y.O.)</i>	10	\$49,500				\$49,500
<i>Illinois Stallion Stakes</i>						
<i>Martinsville</i>	8	\$28,900				\$28,900
<u>ISOBA Summer & Fall Previews</u>						
<i>DuQuoin (6/6)</i>	16	\$16,100				\$16,100
<i>Springfield (6/13)</i>	20	\$20,400				\$20,400
<i>Springfield (Fall)</i>	Rained Out					
NON-PARI-MUTUEL TOTALS	615	\$1,237,974				\$1,237,974
ILLINOIS DEPT. OF AGRICULTURE						
<i>Million Dollar Bonus for 2-Year-Olds*</i>						\$40,000
1998 GRAND TOTALS	<u>900</u>	<u>\$6,788,735</u>	<u>1,585</u>	<u>\$9,203,020</u>	<u>\$1,127,506</u>	<u>\$17,159,261</u>

These 1998 figures are only for races restricted to Illinois Conceived and Foaled Standardbreds (ICF) that are properly registered with the Department of Agriculture, and do not include Illinois Conceived and Foaled and/or Illinois Owned (ICF/IO) races and open company stake and overnite winners.

* The Million Dollar Bonus for ICF two-year-olds was not won in 1998; however, the Department awarded a \$10,000 Consolation Bonus prize to the owner(s) of the high-point horse in each of the four divisions.

**ILLINOIS DEPARTMENT OF AGRICULTURE
HORSE RACING PROGRAMS
1998 ILLINOIS THOROUGHBRED BREEDERS FUND PURSES AND AWARDS PAID**

TRACK/ASSOCIATION	IL-REGISTERED STAKES		O'NITES W/O SUPPLEMENTS		OPEN RACES	WINNERS' SHARE		INCL. ANY OWNERS' AWARDS	PLACE/SHOW OWNERS' AWARDS	BREEDERS' AWARDS	TOTAL PURSES AND AWARDS
	RACES	PURSES	RACES	PURSES		OWNERS' AWARDS	AWARDS				
SPORTSMAN'S PARK <i>National Jockey Club</i>	10	\$717,000	199	\$4,972,200	176	\$2,752,800	373,825	663,389			\$9,479,214
HAWTHORNE RACE COURSE <i>Hawthorne Race Course, Inc.</i>	13	\$930,925	244	\$5,124,500	187	\$2,546,760	446,319	641,329			\$9,689,833
FAIRMOUNT PARK <i>Ogden-Fairmount, Inc.</i>	6	\$154,800	71	\$317,600	416	\$1,581,432	207,804	192,073			\$2,453,709
PARI-MUTUEL TOTALS	29	\$1,802,725	514	\$10,414,300	779	\$6,880,992	\$1,027,948	\$1,496,791			\$21,622,756
Stallion Owners Awards											\$188,000
County Fairs Racing											\$44,825
TOTAL OF PROGRAM											\$21,855,581

