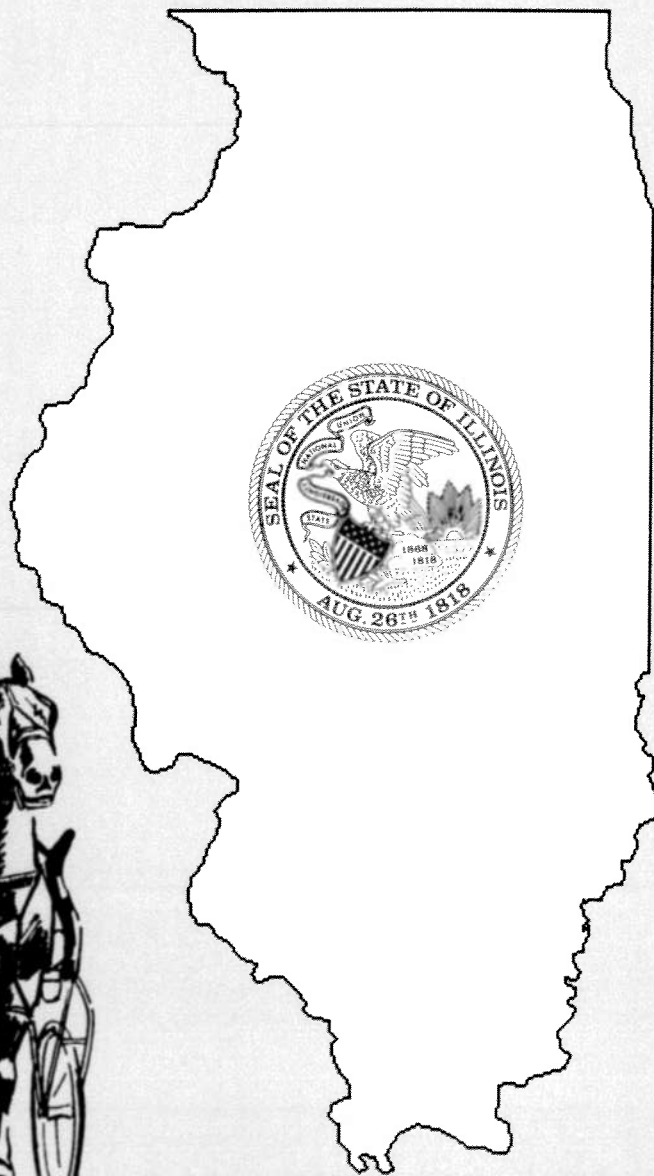


# ILLINOIS RACING BOARD



---

ANNUAL REPORT

1997

# ILLINOIS RACING BOARD

Gene Lamb - Chairman  
Champaign



Ralph M. Gonzalez  
Jacksonville



William E. Jackson  
Chicago



James M. Kane  
Long Grove



Joseph F. Kindlon  
Wheaton



Louise E. O'Sullivan  
Chicago



Lorna E. Propes  
Evanston



John B. Simon  
Chicago



Joseph J. Sinopoli - Executive Director  
James East - General Counsel/Deputy Director  
Marc V. Laino - State Director of Mutuels  
Shelley Kalita - Laboratory Director

Printed by the Authority of the State of Illinois  
4-1998-800-1007996

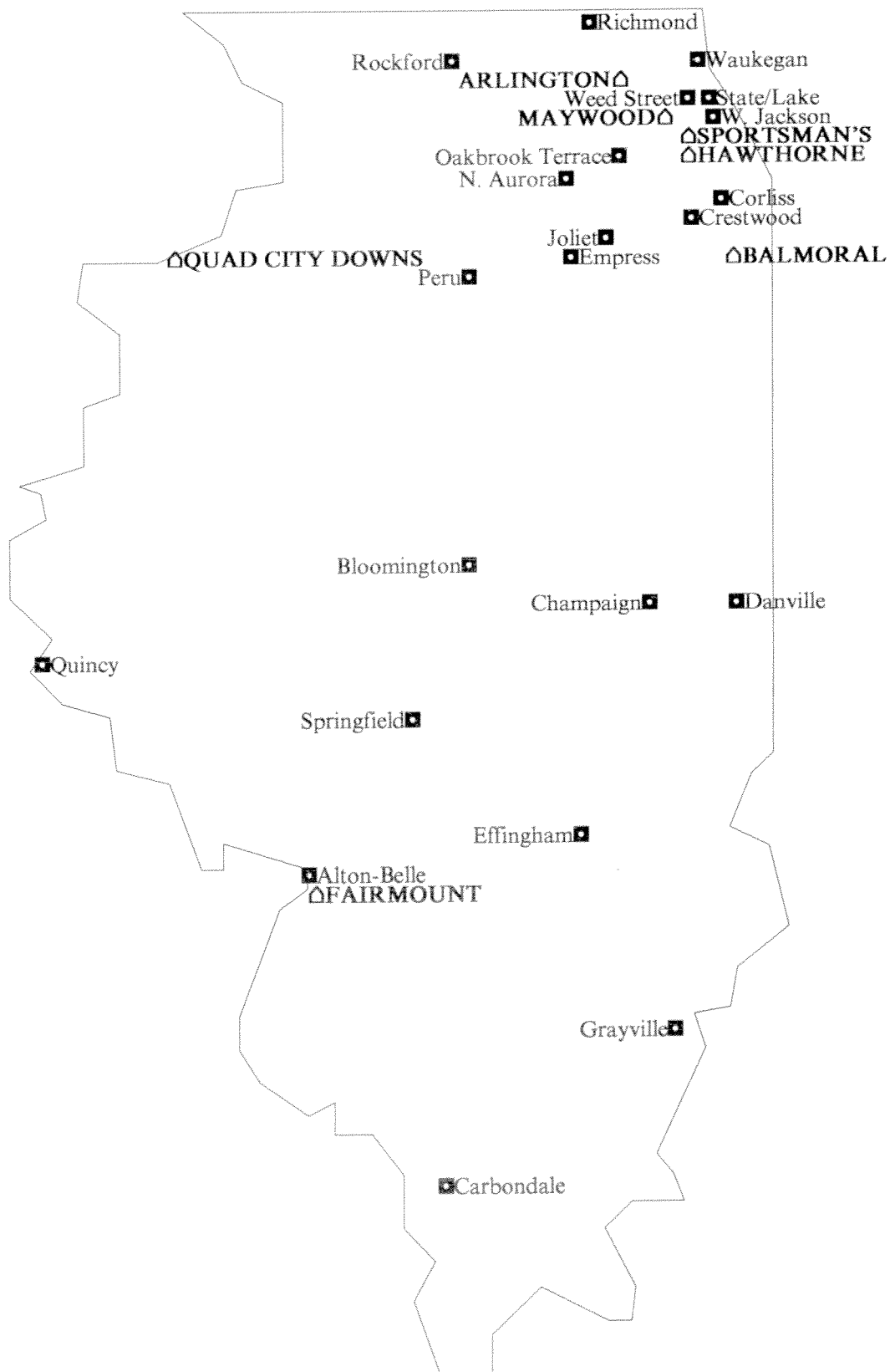


## CONTENTS

Map of Illinois Racetracks and OTB Parlors .....	2
1997 Illinois Horses of the Year .....	3
Background .....	4
Laboratory .....	8
<b>MONEY TO ILLINOIS</b>	
Sources and Allocation of Revenue-Exhibit I .....	10
Cash Disbursements-Exhibit II .....	11
<b>STATISTICAL DATA</b>	
1980 - 1997 Illinois Handles .....	12
1997 Disbursement of Illinois Handle .....	14
1994 - 1997 Monthly Handle Comparison .....	15
Comparison of Handle On Track, Intertrack and Off Track .....	16
On Track Totals .....	18
Intertrack Totals .....	19
Off Track Totals .....	20
All Racing Totals .....	21
Comparison of Wagering Pools .....	22
1997 Off Track Parlor and Intertrack Handles .....	24
Summary of Parlor Surcharges and Revenues to City and County .....	25
1997 Commingled Handle vs. Simulcast Handle .....	26
1997 Illinois Handle on Out-of-State Tracks .....	27
1997 Racing Dates Schedule .....	28
1998 Racing Dates Schedule .....	29
<b>RACE MEETING STATISTICS</b>	
<b>THOROUGHBRED</b>	
National Jockey Club - Sportsman's Park .....	30
Arlington International Racecourse, Inc. - Arlington International Racecourse .....	31
Hawthorne Race Course, Inc. - Hawthorne Race Course .....	32
Ogden-Fairmount, Inc. - Fairmount Park .....	33
<b>HARNESS</b>	
Suburban Downs, Inc. - Hawthorne Race Course .....	34
Maywood Park Trotting, Egyptian Trotting and Associates Racing - Maywood Park .....	35
Chicago Downs and Fox Valley Trotting - Sportsman's Park .....	39
Balmoral Racing Club, Inc. - Balmoral Park .....	42
Ogden-Fairmount, Inc. - Fairmount Park .....	43
State Fairs - Springfield and DuQuoin .....	44
<b>INTERTRACK AND OFF TRACK LOCATIONS</b>	
Intertrack Sites .....	46
Off Track Parlor Sites .....	48
Major Stakes Races .....	54
Leading Thoroughbred Jockeys and Trainers .....	55
Leading Harness Drivers and Trainers .....	56
Breeders Fund Purses and Awards Paid .....	57

# 1997 ILLINOIS RACETRACKS AND OTB PARLORS

△ RACETRACK    ■ OTB Parlor



## 1997 ILLINOIS HORSES OF THE YEAR



**Buck's Boy** - 1997 Illinois Horse of the Year

*Photo Credit: Four Footed Fotos*



**Fox Valley Memory** - 1997 Illinois Harness Horse of the Year

*Photo Credit: Four Footed Fotos*

## BACKGROUND

The Illinois Racing Board consists of nine members appointed to six year terms by the Governor with the advise and consent of the Senate. The Board is responsible for enforcement of the statute governing horse racing in Illinois known as the Illinois Horse Racing Act.

Each year the Board issues racing licenses and establishes a racing schedule for each of the state's operating racetracks, both thoroughbred and harness. The race date allocation process involves an assessment of each racetrack's application for a racing license in view of the best interest of Illinois racing and such factors as the racetrack's facilities and accommodations for the public, the tax revenues to be generated for the state from various race meets, the extent of promotional and marketing activities, the character, fitness, reputation and integrity of the racetrack's owners and operators, and each racetrack's compliance with affirmative action plans.

In calendar year 1997, thoroughbred racing dates were awarded to Arlington International Racecourse (Arlington Heights), Fairmount Park Race Track (Collinsville), Hawthorne Race Course (Stickney), and Sportsman's Park Race Track (Cicero). Harness race dates were awarded to Balmoral Park Race Track (Crete), Fairmount Park Race Track, Hawthorne Race Course, Maywood Park Race Track (Maywood), and Sportsman's Park Race Track.

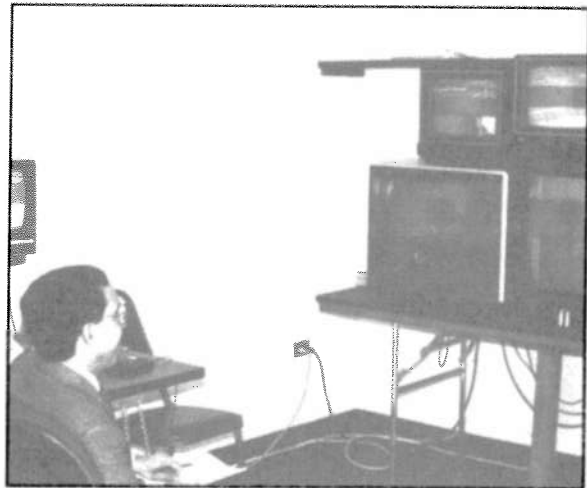
Off-track or "OTB" licenses are issued by the Board on an annual basis. Each racetrack is entitled to receive up to six OTB licenses, except Fairmount Park which is entitled to seven such licenses. An off-track facility may not be located within 500 feet of any church, school or residence and must be located within 90 miles of the applicant's racetrack (135 miles for downstate tracks). The Board granted 22 off-track licenses in calendar year 1997. Additionally, all Illinois racetracks are entitled to accept intertrack simulcast wagers when they are not conducting live racing.

The Board is responsible for the audit of all racing revenues and receipts, and for the collection and disbursement of all fees and taxes from racing. In calendar year 1997, a total of \$553,709,328 was bet on Illinois horse races while an additional \$626,324,386 was bet on races simulcast from other states. Of the total in-state handle, 77.6% or \$915,771,264 was returned to the public in the form of winnings, 6.7% or \$78,852,978 was paid to horsemen at Illinois racetracks, 4% or \$47,287,094 was paid to local or state government, and 10.1% or \$119,332,646 was retained by the operating facilities collectively. Additional simulcast fees equaling 1.6% of the total handle were paid to out-of-state entities. The Board employs parimutuel auditors at each racetrack to ensure that all collections and disbursements are made correctly and in a timely fashion in accordance with the

provisions of the Illinois Horse Racing Act.

It is the Board's responsibility to ensure the honesty and integrity of all horse races conducted in Illinois. All racing participants including jockeys, harness drivers, trainers, grooms, owners, outriders, pony persons, feed vendors, concessionaires, veterinarians, exercise persons, blacksmiths, agents and others whose work is conducted at Illinois racetracks must be licensed by the Board each year. The licensing process involves a complete criminal background check, a review of the applicant's prior racing record and financial history, an assessment of the applicant's character and fitness, and a determination of the applicant's competency to perform the duties for which the license is sought. Once issued, a license may be suspended or revoked by the Board for any just cause. In calendar year 1997, the Board issued 11,993 occupation licenses.

Each race conducted in Illinois is observed by at least three stewards and several patrol judges, all of whom have extensive racing experience. The stewards' viewing stand is located near the finish line of each racetrack and is equipped with several television monitors to permit a viewing of multiple angles of each race. The stewards observe the races both for acts of interference, which would cause a disqualification, and for attempts to fraudulently manipulate the outcome, which would result in the permanent suspensions of any parties involved.



*ILLINOIS RACING BOARD STEWARDS CLOSELY MONITOR EACH RACE AND STUDY VIDEOTAPES FROM ALL ANGLES.*

All winning horses and others selected at the discretion of the stewards are required to provide a urine and blood sample for purpose of testing for illegal substances. The Board employs veterinarians at each track to supervise the collection of blood and urine at designated post-race detention barns. Following each race program, blood and urine samples are sent to the Board's state-of-the-art forensic laboratory located in Chicago. In calendar year 1997, more than 28,000 samples were tested and 41 positive reports were issued.





*ILLINOIS RACING BOARD VETERINARIAN DRAWS BLOOD FOR POST-RACE DRUG TESTING.*

Pre-race saliva tests are also conducted by the Board. The samples are collected on a random basis in the paddock or saddling area before each race. In 1997, 3,606 pre-race tests were conducted and no positives were reported.

Each horse entered to race must be in a security stall at least two hours prior to its post-time, and must be attended by the trainer or the trainer's delegate. The entire barn area is closely monitored by the Board's security staff as well as security guards employed by the racetrack. Illinois State Police officers provide additional security and investigative services for the Board.

To ensure that horses participating in the races are the same as those entered and listed in the official program, the Board security staff identifies each horse in each race by registered lip tattoo or freeze brand as the horse arrives in the paddock. Prior to each race, every horse is examined by an official veterinarian to ensure that it is physically sound and not medically incapable of giving its best effort.



*A LIP TATOO OR FREEZE BRAND IS USED TO IDENTIFY EACH HORSE.*

The Board employs approximately 120 employees and has an annual operating budget of approximately \$6 million. The Board's administrative staff and central office are located at the James R. Thompson center in downtown Chicago.

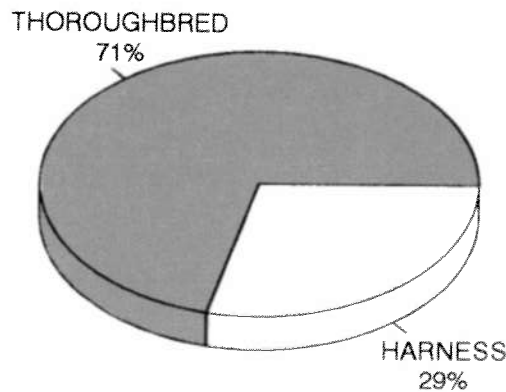
Calendar year 1997 presented many challenges for the Illinois horse racing industry as total handle declined 4.3% from 1996 in the face of continued competition from riverboat casinos in Indiana. Total purses paid to horsemen including all supplements decreased 8% to \$87.9 million, and total fees and taxes paid to the state and local governments dropped 1.8%. These declines were exacerbated by an increase in the amount of betting on out-of-state simulcasts in relation to betting on Illinois races. Only 47% of all handle in 1997 was on Illinois races, as compared to 54% in 1996. The increase in simulcast wagering significantly reduced the total purses available for Illinois horsemen as well as revenues to Illinois track operators.

On September 8, 1997, Arlington International Racecourse announced that it would not seek a license to operate in 1998 and cited extensive operating losses as the reason. Similarly, the off-track facilities located in Richmond and Quincy discontinued operations in 1997. Following these developments, at its September 26th hearing for the allocation of 1998 race dates the Board awarded all upstate thoroughbred racing dates to

Sportsman's Park and Hawthorne Race Course. This adjustment in the thoroughbred schedule necessitated a transfer of all upstate harness meets in 1998 to Maywood Park and Balmoral Park and a reduction in the overall number of harness programs.

The Board is optimistic that the changes in the racing schedule for 1998 will lead to higher daily handles and purses than in recent years.

**1997 TOTAL ILLINOIS HANDLE  
LIVE AND SIMULCAST RACES**



<b>YEAR</b>	<b>ILLINOIS HANDLE</b>	<b>STATE REVENUE</b>	<b>PURSES DISTRIBUTED</b>
1980	1,004,896,061	70,209,784	71,989,067
1981	1,038,061,869	72,573,515	75,835,950
1982	972,684,613	67,512,158	74,093,871
1983	964,058,574	66,474,866	73,485,330
1984	1,018,165,679	64,564,548	76,728,985
1985	923,234,631	60,599,368	72,224,237
1986	838,346,834	51,462,300	68,969,980
1987	964,637,340	57,096,894	78,996,744
1988	1,005,631,974	46,308,994	78,266,712
1989	1,193,202,530	43,289,387	94,392,895
1990	1,252,368,115	45,723,937	95,887,189
1991	1,248,161,065	46,318,927	93,065,342
1992	1,290,919,614	44,744,193 *	92,864,207
1993	1,282,020,262	47,571,875	90,565,845
1994	1,238,762,950	46,624,337	89,668,003
1995	1,201,999,292	44,529,168	90,705,636
1996	1,232,867,396	45,758,661	95,607,445
1997	1,180,033,714	45,133,914	87,984,889

\* Over \$3 million in uncashed tickets not submitted in 1992

## LABORATORY

In 1997, the laboratory initiated a program for the control of furosemide (Lasix) administrations at the racetracks. Furosemide is a medication permitted for bleeders on race day under controlled conditions. The Board's medication rule allows a 250 mg IV injection of Lasix to be given to horses 4 hours before post time. Previously, the administrations were monitored by requiring Lasix injections to be given in a special barn under the scrutiny of Board and track security personnel. The new Lasix blood quantitation program allows for the administration of Lasix in the horse's own stall, eliminating the need for the Lasix barn. The Lasix administrations are now controlled by a blood test level of 60 ng/ml. Penalties for violations of the Lasix rule are on a graduated scale, depending on the concentration of Lasix found in the blood and

the number of repeat violations by the trainer. During 1997, the laboratory screened 3,000 blood samples for Lasix levels and reported 8 violations.

Routine testing by automated Enzyme Linked Immunosorbent Assay technology and the addition of high-pressure liquid chromatography/mass spectrometry to the laboratory has enabled the detection and identification of a variety of substances. In 1997, the laboratory reported positives on a record thirty different compounds.

The Laboratory continued participation in the International Association of Racing Commissioners Quality Assurance Program and in the International Proficiency Testing Program conducted by the Association of Official Racing Chemists, maintaining a perfect score on all blinds and proficiencies.



*EQUINE BLOOD, URINE AND SALIVA SAMPLES ARE TESTED FOR PROHIBITED SUBSTANCES AT THE ILLINOIS RACING BOARD FORENSIC LABORATORY.*

## 1997 LABORATORY TEST SAMPLES

POST RACE	URINE	BLOOD	TOTAL
THOROUGHBRED	5,463	5,580	11,043
HARNESS	8,570	8,902	17,472
<b>TOTAL</b>	<b>14,033</b>	<b>14,482</b>	<b>28,515</b>

PROHIBITED DRUG POSITIVES	
THOROUGHBRED	15
HARNESS	26
<b>TOTAL DRUG POSITIVES</b>	<b>41</b>
TOTAL DIFFERENT DRUGS REPORTED	30

PHENYLBUTAZONE VIOLATIONS	
THOROUGHBRED OVERAGES	61
HARNESS OVERAGES	57
<b>TOTAL OVERAGES</b>	<b>118</b>

LASIX VIOLATIONS	
THOROUGHBRED OVERAGES	8
HARNESS OVERAGES	0
<b>TOTAL OVERAGES</b>	<b>8</b>

PRE-RACE TESTING		
	SALIVA	POSITIVE
THOROUGHBRED	1,239	0
HARNESS	2,367	0
<b>TOTAL</b>	<b>3,606</b>	<b>0</b>

PROHIBITED DRUGS REPORTED 1985 - 1997		
	NUMBER OF POSITIVES	NUMBER OF DIFFERENT DRUGS
1985	11	3
1986	21	2
1987	15	3
1988	33	3
1989	58	15
1990	33	14
1991	32	19
1992	40	23
1993	58	20
1994	82	21
1995	38	20
1996	37	23
1997	41	30

**ILLINOIS RACING BOARD**  
**STATEMENT OF SOURCE AND ALLOCATION OF REVENUE**  
**FOR THE 1997 RACING YEAR**

**SOURCE OF REVENUE:**

Application and License Fees of Racing Associations.....	\$	130,820
Admission Taxes.....	\$	192,663
Privilege Tax on Pari-Mutuel Wagering*.....	\$	27,272,167
H.R. T.A. Tax on Pari-Mutuel Wagering.....	\$	5,781,994
Breakage from Pari-Mutuel Wagering.....	\$	6,926,238
Licensing of Racing Personnel.....	\$	283,923
Fingerprint Fees.....	\$	143,894
Uncashed Pari-Mutuel Tickets (1995).....	\$	4,299,242
Horsemen's Fines.....	\$	89,660
Miscellaneous Sources.....	\$	13,313
<b>TOTAL STATE REVENUES RECEIVED .....</b>	<b>\$</b>	<b>45,133,914</b>
2% of OTB Handle to City and County .....	\$	11,563,988
City (Chicago) OTB Admission Tax .....	\$	998,123
On Track City Admission Tax .....	\$	80,241
County Commingling Tax (2.5% of Commission) .....	\$	306,792
Intertrack Surcharge to County (20 %) .....	\$	739,853
<b>TOTAL LOCAL GOVERNMENT REVENUES RECEIVED .....</b>	<b>\$</b>	<b>13,688,996</b>
<b>TOTAL REVENUES RECEIVED .....</b>	<b>\$</b>	<b>58,822,910</b>

**ALLOCATION OF REVENUE:**

General Revenue Fund.....	\$	4,214,916
Veteran's Rehabilitation Fund.....	\$	4,299,242
Agricultural Premium Fund.....	\$	13,636,084
Metropolitan Exposition, Auditorium and Office Building Fund.....	\$	9,408,898
Fair and Exposition Fund.....	\$	243,390
Build Illinois Fund.....	\$	1,665,662
Horse Racing Tax Allocation Fund.....	\$	5,006,872
HRTA excess pursuant to Section 5/26(h)(11)(B).....	\$	775,122
Fingerprint License Fund.....	\$	143,894
Illinois Standardbred Breeders Fund.....	\$	668,549
Illinois Thoroughbred Breeders Fund.....	\$	1,608,167
Race Track Improvement Fund.....	\$	3,463,119
<b>TOTAL STATE REVENUES ALLOCATED.....</b>	<b>\$</b>	<b>45,133,914</b>
To Cities .....	\$	6,860,358
To Counties .....	\$	6,828,638
<b>TOTAL LOCAL GOVERNMENT REVENUES ALLOCATED.....</b>	<b>\$</b>	<b>13,688,996</b>
<b>TOTAL REVENUES ALLOCATED.....</b>	<b>\$</b>	<b>58,822,910</b>

\* Privilege Tax includes \$ 920,375 when tracks export their signal out to other states and the State receives 7.5% of the track's commission.

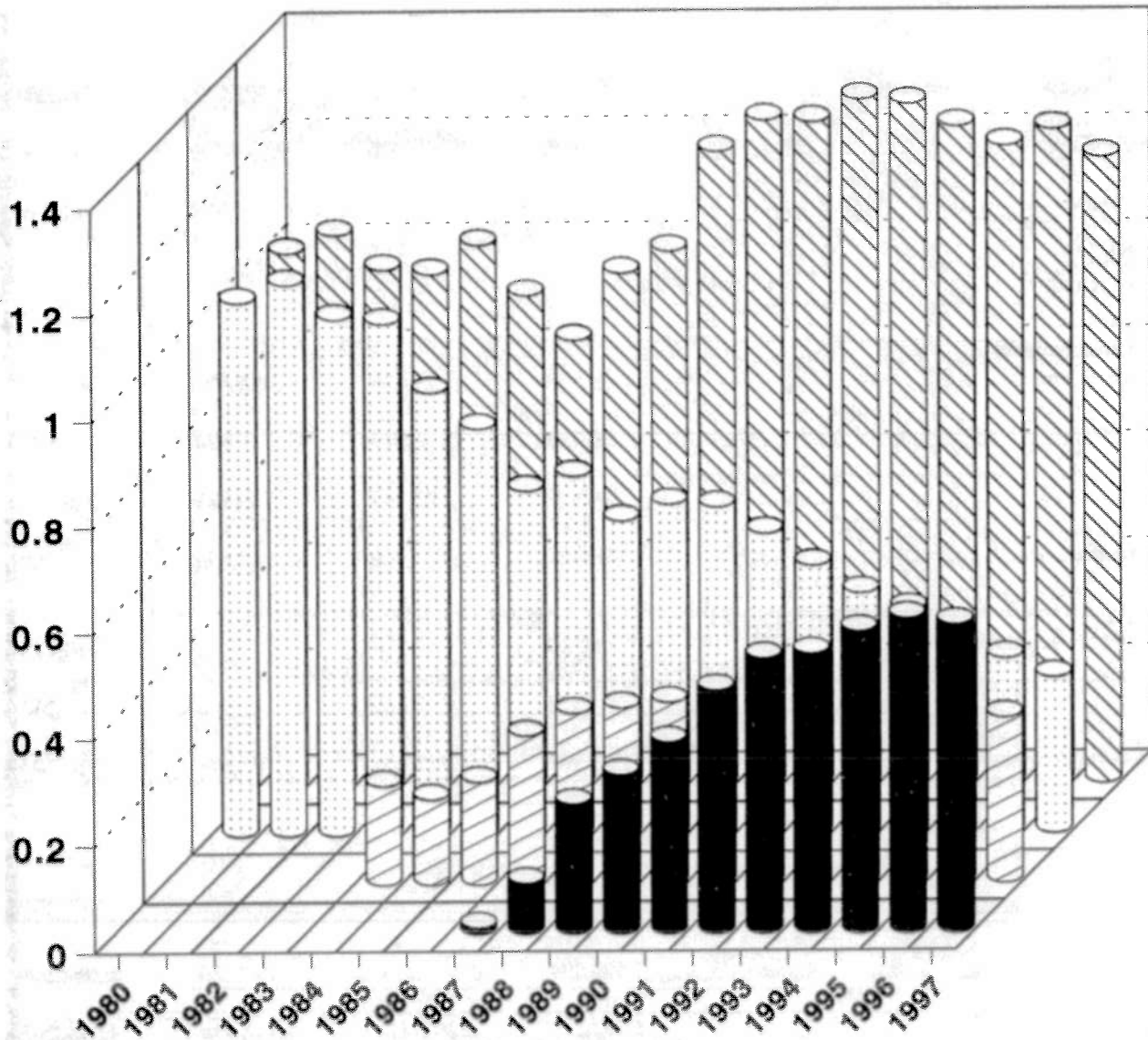


**ILLINOIS RACING BOARD  
STATEMENT OF CASH DISBURSEMENTS  
FOR THE 1997 RACING YEAR**

	GENERAL ADMINISTRATION	SUPERVISION OF RACE MEETS	LABORATORY	TOTAL
Salary Expenses, including expense of Retirement and Social Security.....	1,230,003	2,794,972	742,831	4,767,806
Contractual Services: Freight, Repairs, Rentals, Postage, Professional Services, etc .....	183,336	43,711	491,037	718,084
Hearing Officers.....	15,466	0	0	15,466
Travel Expenses.....	30,268	29,460	5,568	65,296
Commodities: Office Supplies, Laboratory and Veterinarian Supplies, Repair Parts, etc. ....	20,975	27,036	416,571	464,582
Printing.....	4,788	1,349	834	6,971
Equipment.....	36,818	72,343	116,979	226,140
Telecommunications.....	73,484	0	7,596	81,080
Operating Automotive Equipment.....	6,720	3,508	0	10,228
Refunds.....	125	225	0	350
<b>Total Operating Expenses</b>	<b>1,601,983</b>	<b>2,972,604</b>	<b>1,781,416</b>	<b>6,356,003</b>
Payments to Racing Associations, of moneys held in Trust, for Improvements to Race Track Facilities .....	3,580,294	0	0	3,580,294
<b>Total 1997 Disbursements</b>	<b>5,182,277</b>	<b>2,972,604</b>	<b>1,781,416</b>	<b>9,936,297</b>

# 1980 - 1997 ILLINOIS HANDLES

Billions



OFF TRACK
  INTERTRACK
  ON TRACK
  TOTAL HANDLE

NUMBER OF PARLORS

1987=2, 1988=5, 1989=8, 1990=9, 1991=11, 1992=20

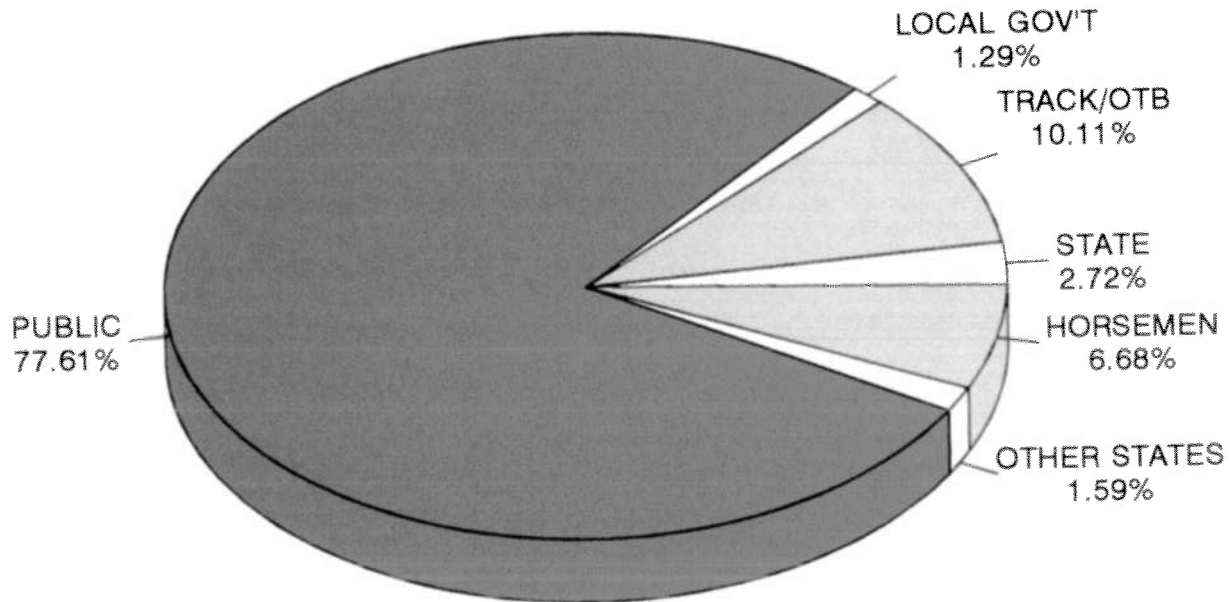
1993=21, 1994=23, 1995=23, 1996=22, 1997=22

1980 - 1997 ILLINOIS HANDLE TOTALS						
	ON TRACK	INTERTRACK	OFF TRACK	TOTAL		
	THOROUGHBRED	THOROUGHBRED	THOROUGHBRED	THOROUGHBRED	MEETS	
1980	504,300,802	0	0	504,300,802	1980	
1981	536,604,635	0	0	536,604,635	1981	
1982	496,698,530	0	0	496,698,530	1982	
1983	483,102,888	0	0	483,102,888	1983	
1984	439,580,028	131,402,659	0	570,982,687	1984	
1985	413,499,578	107,756,838	0	521,256,416	1985	
1986	336,067,733	117,587,272	0	453,655,005	1986	
1987	356,421,707	194,440,313	6,491,923	557,353,943	1987	
1988	300,440,988	210,116,491	52,217,122	562,774,601	1988	
1989	362,027,974	204,424,200	134,256,244	700,708,418	1989	
1990	358,258,669	205,490,935	157,175,600	720,925,204	1990	
1991	337,354,770	181,590,802	178,797,671	697,743,243	1991	
1992	311,469,954	168,456,647	219,595,842	699,522,443	1992	
1993	285,304,997	163,196,102	251,089,094	699,590,193	1993	
1994	269,292,713	154,548,452	257,743,541	681,584,706	1994	
1995	208,971,670	161,026,595	284,072,667	654,070,932	1995	
1996	224,480,978	165,164,793	307,428,219	697,073,990	1996	
1997	203,602,521	165,229,200	310,108,794	678,940,515	1997	
	ON TRACK	INTERTRACK	OFF TRACK	TOTAL		
	HARNESS	HARNESS	HARNESS	HARNESS	MEETS	
1980	500,595,259	0	0	500,595,259	1980	
1981	501,457,234	0	0	501,457,234	1981	
1982	475,986,083	0	0	475,986,083	1982	
1983	480,955,686	0	0	480,955,686	1983	
1984	393,772,427	53,410,565	0	447,182,992	1984	
1985	350,445,586	51,532,629	0	401,978,215	1985	
1986	310,575,635	74,116,194	0	384,691,829	1986	
1987	317,966,134	83,969,761	5,347,502	407,283,397	1987	
1988	289,706,937	110,485,223	42,665,213	442,857,373	1988	
1989	258,603,812	125,921,999	107,968,301	492,494,112	1989	
1990	256,855,703	134,948,222	139,638,986	531,442,911	1990	
1991	228,205,387	142,874,593	179,337,842	550,417,822	1991	
1992	193,087,205	162,203,257	236,106,709	591,397,171	1992	
1993	167,541,086	150,389,103	264,499,880	582,430,069	1993	
1994	151,493,533	139,555,386	266,129,325	557,178,244	1994	
1995	121,047,072	145,351,015	281,530,273	547,928,360	1995	
1996	104,102,288	148,996,834	282,694,284	535,793,406	1996	
1997	88,580,572	144,422,036	268,090,591	501,093,199	1997	
	ON TRACK	INTERTRACK	OFF TRACK	TOTAL		
	ALL RACING	ALL RACING	ALL RACING	ALL RACING	MEETS	
1980	1,004,896,061	0	0	1,004,896,061	1980	
1981	1,038,061,869	0	0	1,038,061,869	1981	
1982	972,684,613	0	0	972,684,613	1982	
1983	964,058,574	0	0	964,058,574	1983	
1984	833,352,455	184,813,224	0	1,018,165,679	1984	
1985	763,945,164	159,289,467	0	923,234,631	1985	
1986	646,643,368	191,703,466	0	838,346,834	1986	
1987	674,387,841	278,410,074	11,839,425	964,637,340	1987	
1988	590,147,925	320,601,714	94,882,335	1,005,631,974	1988	
1989	620,631,786	330,346,199	242,224,545	1,193,202,530	1989	
1990	615,114,372	340,439,157	296,814,586	1,252,368,115	1990	
1991	565,560,157	324,465,395	358,135,513	1,248,161,065	1991	
1992	504,557,159	330,659,904	455,702,551	1,290,919,614	1992	
1993	452,846,083	313,585,205	515,588,974	1,282,020,262	1993	
1994	420,786,246	294,103,838	523,872,866	1,238,762,950	1994	
1995	330,018,742	306,377,610	565,602,940	1,201,999,292	1995	
1996	328,583,266	314,161,627	590,122,503	1,232,867,396	1996	
1997	292,183,093	309,651,236	578,199,385	1,180,033,714	1997	



## 1997 DISBURSEMENT OF ILLINOIS HANDLE

1997 Illinois Handle	1,180,033,714	Track/OTB	Horsemen	State	Local Gov't	Public	Other States
Track Commission	104,436,051	104,436,051					
Purses Earned	83,312,310		83,312,310				
Privilege Tax	26,351,792			26,351,792			
HRTA Tax	5,006,872			2,145,802	2,861,070		
HRTA Excess	775,122	387,561	387,561				
Out-of-State Fee (3%)	18,789,732						18,789,732
Public Pool	941,361,835					941,361,835	
Breakage	6,926,238	3,463,119		3,463,119		(6,926,238)	
Arlington Surcharge	3,050,655	3,050,655				(3,050,655)	
OnTrack Surcharge	595,351	595,351				(595,351)	
ITW Surcharge	3,699,263	1,479,705	1,479,705		739,853	(3,699,263)	
OTB Surcharge	11,319,064	(244,923)			11,563,988	(11,319,064)	
Recapture	9,728,218	9,728,218	(9,728,218)				
RICF Charity	750,000	(750,000)	750,000				
State Police (FY97)	161,471	(161,471)		161,471			
Breeders Awards	2,651,620	(2,651,620)	2,651,620				
<b>Total</b>		119,332,646	78,852,978	32,122,184	15,164,910	915,771,264	18,789,732
		10.11%	6.68%	2.72%	1.29%	77.61%	1.59%
Out-of State Handle on Illinois Races	524,992,359						
Simulcast Fee (3%)	15,749,771	7,087,397	7,087,397	1,181,233	393,744		(15,749,771)
<b>GRAND TOTALS</b>		126,420,042	85,940,375	33,303,417	15,558,654	915,771,264	3,039,961



## ILLINOIS MONTHLY HANDLE COMPARISON 1994, 1996, 1997

## LIVE AND SIMULCAST HANDLE COMBINED

	<u>1994</u>	<u>1996</u>	<u>1997</u>	96 to 97 +/- %	94 to 97 +/- %
JANUARY	67,425,243	82,734,383	79,963,105	-3%	19%
FEBRUARY	80,294,599	92,546,596	89,995,153	-3%	12%
MARCH	108,739,607	110,878,671	106,870,737	-4%	-2%
APRIL	108,763,844	101,968,449	98,958,292	-3%	-9%
MAY	116,853,769	115,669,697	113,339,294	-2%	-3%
JUNE	108,010,174	110,308,933	98,150,306	-11%	-9%
JULY	124,254,726	115,398,848	107,473,296	-7%	-14%
AUGUST	120,841,464	119,643,875	114,377,969	-4%	-5%
SEPTEMBER	108,567,409	97,555,146	93,609,774	-4%	-14%
OCTOBER	102,147,653	97,850,801	94,190,775	-4%	-8%
NOVEMBER	97,180,476	97,300,505	95,039,267	-2%	-2%
DECEMBER	95,683,986	91,011,492	88,065,746	-3%	-8%
<b>TOTAL</b>	<b>1,238,762,950</b>	<b>1,232,867,396</b>	<b>1,180,033,714</b>	<b>-4.3%</b>	<b>-4.7%</b>

## LIVE ILLINOIS RACES ONLY

	<u>1994</u>	<u>1996</u>	<u>1997</u>	96 to 97 +/- %	94 to 97 +/- %
JANUARY	65,703,994	40,599,017	34,707,247	-15%	-47%
FEBRUARY	77,613,419	43,047,851	36,851,753	-14%	-53%
MARCH	104,137,142	57,191,588	45,088,681	-21%	-57%
APRIL	105,431,209	55,727,733	46,918,889	-16%	-55%
MAY	107,293,630	61,674,186	52,490,227	-15%	-51%
JUNE	103,186,049	60,049,947	45,377,750	-24%	-56%
JULY	117,729,885	66,932,000	53,593,867	-20%	-54%
AUGUST	114,663,961	67,591,609	58,754,230	-13%	-49%
SEPTEMBER	104,051,646	53,651,760	47,107,582	-12%	-55%
OCTOBER	98,608,508	50,243,312	46,414,801	-8%	-53%
NOVEMBER	89,658,694	53,938,994	43,764,574	-19%	-51%
DECEMBER	93,832,991	49,950,894	42,639,727	-15%	-55%
<b>TOTAL</b>	<b>1,181,911,128</b>	<b>660,598,891</b>	<b>553,709,328</b>	<b>-16%</b>	<b>-53%</b>

## SIMULCAST RACES ONLY

	<u>1994</u>	<u>1996</u>	<u>1997</u>	96 to 97 +/- %	94 to 97 +/- %
JANUARY	1,721,249	42,135,366	45,255,858	7%	2529%
FEBRUARY	2,681,180	49,498,745	53,143,400	7%	1882%
MARCH	4,602,465	53,687,083	61,782,056	15%	1242%
APRIL	3,332,635	46,240,716	52,039,403	13%	1462%
MAY	9,560,139	53,995,511	60,849,067	13%	536%
JUNE	4,824,125	50,258,986	52,772,556	5%	994%
JULY	6,524,841	48,466,848	53,879,429	11%	726%
AUGUST	6,177,503	52,052,266	55,623,739	7%	800%
SEPTEMBER	4,515,763	43,903,386	46,502,192	6%	930%
OCTOBER	3,539,145	47,607,489	47,775,974	0%	1250%
NOVEMBER	7,521,782	43,361,511	51,274,693	18%	582%
DECEMBER	1,850,995	41,060,598	45,426,019	11%	2354%
<b>TOTAL</b>	<b>56,851,822</b>	<b>572,268,505</b>	<b>626,324,386</b>	<b>9%</b>	<b>1002%</b>

## 1997 COMPARISON OF LOCATION HANDLES LIVE ILLINOIS RACING AND SIMULCASTS

LIVE PRGMS	AMOUNT WAGERED	ON		INTER		OFF		
		TRACK	%	TRACK	%	TRACK	%	
<b>THOROUGHbred MEETINGS</b>								
119	Arlington International Racecourse	306,256,960	110,049,030	35.93%	63,601,869	20.77%	132,606,061	43.30%
81	Hawthorne Race Course	151,218,280	31,503,243	20.83%	44,246,667	29.26%	75,468,370	49.91%
74	National Jockey Club (Sportsman's)	190,245,005	44,810,645	23.55%	53,535,770	28.14%	91,898,590	48.31%
<u>126</u>	Ogden-Fairmount	<u>31,220,270</u>	<u>17,239,603</u>	<u>55.22%</u>	<u>3,844,894</u>	<u>12.32%</u>	<u>10,135,773</u>	<u>32.47%</u>
<b>400</b>	<b>THOROUGHbred TOTAL</b>	<b><u>678,940,515</u></b>	<b><u>203,602,521</u></b>	<b><u>29.99%</u></b>	<b><u>165,229,200</u></b>	<b><u>24.34%</u></b>	<b><u>310,108,794</u></b>	<b><u>45.68%</u></b>
<b>HARNESs MEETINGS</b>								
179	Balmoral Racing Club	164,167,497	17,906,383	10.91%	56,100,642	34.17%	90,160,472	54.92%
61	Maywood Park Trotting Association	32,136,138	6,251,071	19.45%	8,368,024	26.04%	17,517,043	54.51%
28	Associates Racing Assoc.(Maywood)	15,535,874	3,458,419	22.26%	3,774,138	24.29%	8,303,317	53.45%
27	Egyptian Trotting Assoc. (Maywood)	14,910,933	3,147,643	21.11%	3,713,565	24.90%	8,049,725	53.99%
116	Maywood Park (All 3 Meets)	62,582,945	12,857,133	20.54%	15,855,727	25.34%	33,870,085	54.12%
75	Chicago Downs Assoc.(Sportsman's)	89,310,920	18,431,198	20.64%	23,403,136	26.20%	47,476,586	53.16%
51	Fox Valley Trot. Club (Sportsman's)	58,117,281	11,730,818	20.18%	15,540,655	26.74%	30,845,808	53.08%
126	Sportsman's Park (Both Meets)	147,428,201	30,162,016	20.46%	38,943,791	26.42%	78,322,394	53.13%
5	Du Quoin State Fair	882,457	379,212	42.97%	214,706	24.33%	288,539	32.70%
5	Springfield State Fair	1,055,402	501,385	47.51%	203,628	19.29%	350,389	33.20%
107	Ogden-Fairmount	22,583,407	8,501,873	37.65%	4,083,282	18.08%	9,998,252	44.27%
<u>69</u>	<u>Suburban Downs (Hawthorne)</u>	<u>102,393,290</u>	<u>18,272,570</u>	<u>17.85%</u>	<u>29,020,260</u>	<u>28.34%</u>	<u>55,100,460</u>	<u>53.81%</u>
<b>607</b>	<b>HARNESs TOTAL</b>	<b><u>501,093,199</u></b>	<b><u>88,580,572</u></b>	<b><u>17.68%</u></b>	<b><u>144,422,036</u></b>	<b><u>28.82%</u></b>	<b><u>268,090,591</u></b>	<b><u>53.50%</u></b>
<b>1,007</b>	<b>TOTAL ALL RACING</b>	<b><u>1,180,033,714</u></b>	<b><u>292,183,093</u></b>	<b><u>24.76%</u></b>	<b><u>309,651,236</u></b>	<b><u>26.24%</u></b>	<b><u>578,199,385</u></b>	<b><u>49.00%</u></b>

### LIVE ILLINOIS RACING ONLY

LIVE PRGMS	AMOUNT WAGERED	ON		INTER		OFF		
		TRACK	%	TRACK	%	TRACK	%	
<b>THOROUGHbred MEETINGS</b>								
119	Arlington International Racecourse	135,725,510	73,605,467	54.23%	21,457,811	15.81%	40,662,232	29.96%
81	Hawthorne Race Course	65,128,895	20,577,936	31.60%	17,236,823	26.47%	27,314,136	41.94%
74	National Jockey Club (Sportsman's)	69,628,757	26,197,451	37.62%	16,241,485	23.33%	27,189,821	39.05%
<u>126</u>	<u>Ogden-Fairmount</u>	<u>28,752,590</u>	<u>15,774,939</u>	<u>54.86%</u>	<u>3,844,894</u>	<u>13.37%</u>	<u>9,132,757</u>	<u>31.76%</u>
<b>400</b>	<b>THOROUGHbred TOTAL</b>	<b><u>299,235,752</u></b>	<b><u>136,155,793</u></b>	<b><u>45.50%</u></b>	<b><u>58,781,013</u></b>	<b><u>19.64%</u></b>	<b><u>104,298,946</u></b>	<b><u>34.86%</u></b>
<b>HARNESs MEETINGS</b>								
179	Balmoral Racing Club	80,608,745	14,666,274	18.19%	25,290,840	31.37%	40,651,631	50.43%
61	Maywood Park Trotting Association	23,493,194	5,301,139	22.56%	5,860,003	24.94%	12,332,052	52.49%
28	Associates Racing Assoc.(Maywood)	11,247,128	2,986,152	26.55%	2,662,442	23.67%	5,598,534	49.78%
27	Egyptian Trotting Assoc. (Maywood)	11,209,309	2,700,607	24.09%	2,737,360	24.42%	5,771,342	51.49%
116	Maywood Park (All 3 Meets)	45,949,631	10,987,898	23.91%	11,259,805	24.50%	23,701,928	51.58%
75	Chicago Downs Assoc.(Sportsman's)	38,998,775	12,005,349	30.78%	8,489,891	21.77%	18,503,535	47.45%
51	Fox Valley Trot. Club (Sportsman's)	27,420,163	8,234,160	30.03%	6,194,006	22.59%	12,991,997	47.38%
126	Sportsman's Park (Both Meets)	66,418,938	20,239,509	30.47%	14,683,897	22.11%	31,495,532	47.42%
5	Du Quoin State Fair	882,457	379,212	42.97%	214,706	24.33%	288,539	32.70%
5	Springfield State Fair	1,055,402	501,385	47.51%	203,628	19.29%	350,389	33.20%
107	Ogden-Fairmount	20,787,678	7,503,822	36.10%	4,083,282	19.64%	9,200,574	44.26%
<u>69</u>	<u>Suburban Downs (Hawthorne)</u>	<u>38,770,725</u>	<u>10,774,936</u>	<u>27.79%</u>	<u>8,770,131</u>	<u>22.62%</u>	<u>19,225,658</u>	<u>49.59%</u>
<b>607</b>	<b>HARNESs TOTAL</b>	<b><u>254,473,576</u></b>	<b><u>65,053,036</u></b>	<b><u>25.56%</u></b>	<b><u>64,506,289</u></b>	<b><u>25.35%</u></b>	<b><u>124,914,251</u></b>	<b><u>49.09%</u></b>
<b>1,007</b>	<b>TOTAL ALL RACING</b>	<b><u>553,709,328</u></b>	<b><u>201,208,829</u></b>	<b><u>36.34%</u></b>	<b><u>123,287,302</u></b>	<b><u>22.27%</u></b>	<b><u>229,213,197</u></b>	<b><u>41.40%</u></b>

## 1997 OUT-OF-STATE SIMULCASTS

SIMUL. PRGMS		AMOUNT WAGERED	ON TRACK	ON TRACK %	INTER TRACK	INTER TRACK %	OFF TRACK	OFF TRACK %
<b>THOROUGHBRED MEETINGS</b>								
1,055	Arlington International Racecourse	170,531,450	36,443,563	21.37%	42,144,058	24.71%	91,943,829	53.92%
950	THOROUGHBRED SIM.	166,186,779	35,989,007	21.66%	40,928,358	24.63%	89,269,414	53.72%
105	HARNESS SIM.	4,344,671	454,556	10.46%	1,215,700	27.98%	2,674,415	61.56%
493	Hawthorne Race Course	86,089,385	10,925,307	12.69%	27,009,844	31.37%	48,154,234	55.94%
428	THOROUGHBRED SIM.	83,355,336	10,702,227	12.84%	26,219,701	31.46%	46,433,408	55.71%
65	HARNESS SIM.	2,734,049	223,080	8.16%	790,143	28.90%	1,720,826	62.94%
682	National Jockey Club (Sportsman's)	120,616,248	18,613,194	15.43%	37,294,285	30.92%	64,708,769	53.65%
610	THOROUGHBRED SIM.	117,525,325	18,358,287	15.62%	36,351,806	30.93%	62,815,232	53.45%
72	HARNESS SIM.	3,090,923	254,907	8.25%	942,479	30.49%	1,893,537	61.26%
140	Ogden-Fairmount	2,467,680	1,464,664	59.35%	0	0.00%	1,003,016	40.65%
48	THOROUGHBRED SIM.	1,449,994	915,930	63.17%	0	0.00%	534,064	36.83%
92	HARNESS SIM.	1,017,686	548,734	53.92%	0	0.00%	468,952	46.08%
2,370	<b>THOROUGHBRED TOTAL</b>	379,704,763	67,446,728	17.76%	106,448,187	28.03%	205,809,848	54.20%
2,036	THOROUGHBRED SIM.	368,517,434	65,965,451	17.90%	103,499,865	28.09%	199,052,118	54.01%
334	HARNESS SIM.	11,187,329	1,481,277	13.24%	2,948,322	26.35%	6,757,730	60.41%
<b>HARNESS MEETINGS</b>								
1,037	Balmoral Racing Club	83,558,752	3,240,109	3.88%	30,809,802	36.87%	49,508,841	59.25%
592	THOROUGHBRED SIM.	52,400,304	1,630,591	3.11%	19,682,194	37.56%	31,087,519	59.33%
445	HARNESS SIM.	31,158,448	1,609,518	5.17%	11,127,608	35.71%	18,421,322	59.12%
106	Maywood Park Trotting Association	8,642,944	949,932	10.99%	2,508,021	29.02%	5,184,991	59.99%
42	THOROUGHBRED SIM.	4,718,657	425,920	9.03%	1,420,380	30.10%	2,872,357	60.87%
64	HARNESS SIM.	3,924,287	524,012	13.35%	1,087,641	27.72%	2,312,634	58.93%
53	Associates Racing Assoc.(Maywood)	4,288,746	472,267	11.01%	1,111,696	25.92%	2,704,783	63.07%
21	THOROUGHBRED SIM.	2,300,763	207,710	9.03%	613,365	26.66%	1,479,688	64.31%
32	HARNESS SIM.	1,987,983	264,557	13.31%	498,331	25.07%	1,225,095	61.63%
37	Egyptian Trotting Assoc. (Maywood)	3,701,624	447,036	12.08%	976,205	26.37%	2,278,383	61.55%
10	THOROUGHBRED SIM.	1,209,647	124,546	10.30%	356,421	29.46%	728,680	60.24%
27	HARNESS SIM.	2,491,977	322,490	12.94%	619,784	24.87%	1,549,703	62.19%
196	Maywood Park (All 3 Meets)	16,633,314	1,869,235	11.24%	4,595,922	27.63%	10,168,157	61.13%
73	THOROUGHBRED SIM.	8,229,067	758,176	9.21%	2,390,166	29.05%	5,080,725	61.74%
123	HARNESS SIM.	8,404,247	1,111,059	13.22%	2,205,756	26.25%	5,087,432	60.53%
543	Chicago Downs Assoc.(Sportsman's)	50,312,145	6,425,849	12.77%	14,913,245	29.64%	28,973,051	57.59%
316	THOROUGHBRED SIM.	31,086,116	3,424,265	11.02%	9,491,383	30.53%	18,170,468	58.45%
227	HARNESS SIM.	19,226,029	3,001,584	15.61%	5,421,862	28.20%	10,802,583	56.19%
356	Fox Valley Trot. Club (Sportsman's)	30,697,118	3,496,658	11.39%	9,346,649	30.45%	17,853,811	58.16%
225	THOROUGHBRED SIM.	22,381,551	2,331,146	10.42%	6,923,651	30.93%	13,126,754	58.65%
131	HARNESS SIM.	8,315,567	1,165,512	14.02%	2,422,998	29.14%	4,727,057	56.85%
899	Sportsman's Park (Both Meets)	81,009,263	9,922,507	12.25%	24,259,894	29.95%	46,826,862	57.80%
541	THOROUGHBRED SIM.	53,467,667	5,755,411	10.76%	16,415,034	30.70%	31,297,222	58.53%
358	HARNESS SIM.	27,541,596	4,167,096	15.13%	7,844,860	28.48%	15,529,640	56.39%
118	Ogden-Fairmount	1,795,729	998,051	55.58%	0	0.00%	797,678	44.42%
33	THOROUGHBRED SIM.	687,423	395,677	57.56%	0	0.00%	291,746	42.44%
85	HARNESS SIM.	1,108,306	602,374	54.35%	0	0.00%	505,932	45.65%
342	Suburban Downs (Hawthorne)	63,622,565	7,497,634	11.78%	20,250,129	31.83%	35,874,802	56.39%
277	THOROUGHBRED SIM.	57,813,319	6,893,457	11.92%	18,605,590	32.18%	32,314,272	55.89%
65	HARNESS SIM.	5,809,246	604,177	10.40%	1,644,539	28.31%	3,560,530	61.29%
2,592	<b>HARNESS TOTAL</b>	246,619,623	23,527,536	9.54%	79,915,747	32.40%	143,176,340	58.06%
1,516	THOROUGHBRED SIM.	172,597,780	15,433,312	8.94%	57,092,984	33.08%	100,071,484	57.98%
1,076	HARNESS SIM.	74,021,843	8,094,224	10.93%	22,822,763	30.83%	43,104,856	58.23%
<b>4,962 TOTAL ALL RACING</b>								
3,552	THOROUGHBRED SIM.	541,115,214	81,398,763	15.04%	160,592,849	29.68%	299,123,602	55.28%
1,410	HARNESS SIM.	85,209,172	9,575,501	11.24%	25,771,085	30.24%	49,862,586	58.52%

Note: Included in the Thoroughbred Totals are 251 Quarterhorse programs for a total of \$23,155,909.

## ON TRACK

	THOROUGHBRED MEETS	HARNESS MEETS	ALL MEETS
Live Programs Raced	400	607	1,007
Total Live + Dark Days	456	607	1,063
Live Races Run	3,743	6,265	10,008
Attendance	1,518,073	842,459	2,360,532

Illinois Handle on Illinois Races	136,155,793	65,053,036	201,208,829
Illinois Handle on Out-of-State Races on Live Days	62,074,855	23,527,536	85,602,391
Combined Illinois Handle on Live Days	198,230,648	88,580,572	286,811,220
Illinois Handle on Out-of-State Races on Dark Days	5,371,873	0	5,371,873
<b>Combined Illinois Handle on Live + Dark Days</b>	<b>203,602,521</b>	<b>88,580,572</b>	<b>292,183,093</b>
Percentage of Total Combined Illinois Handle	69.68%	30.32%	
Ill. Handle on Out-of-State Races on Live + Dark Days	67,446,728	23,527,536	90,974,264

Average Illinois Handle on Illinois Races	340,389	107,171	199,810
Avg. Ill. Handle on Out-of-State Races on Live Days	155,187	38,760	85,007
Average Combined Illinois Handle on Live Days	495,577	145,932	284,817
Avg. Ill. Handle on Out-of-State Races on Dark Days	95,926	N/A	95,926
<b>Avg. Combined Illinois Handle on Live + Dark Days</b>	<b>446,497</b>	<b>145,932</b>	<b>274,867</b>
Avg. Ill. Handle on OutofState Races on Live+Dark Days	147,909	38,760	149,875

Combined Illinois Handle	\$ 203,602,521	88,580,572	292,183,093
-Commission (Take Out)	\$ 40,378,312	18,036,907	58,415,219
Track Commission	\$ 16,041,736	7,364,463	23,406,199
Purses Earned	\$ 16,041,736	7,364,463	23,406,199
Out-of-State Simulcast Fee (3%)	\$ 2,023,402	705,826	2,729,228
Privilege Tax	\$ 6,271,438	2,602,155	8,873,593
Horse Racing Tax Allocation	\$ 0	0	0
Public Pool	\$ 163,224,209	70,543,665	233,767,874
-Breakage	\$ 1,406,250	576,810	1,983,060
Race Track Improvement Fund	\$ 703,125	288,405	991,530
Breakage to General Revenue	\$ 703,125	288,405	991,530
-Surcharge	\$ 1,265,002	453,518	1,718,520
Payout to Public	\$ 160,552,957	69,513,337	230,066,294
Privilege Tax	\$ 6,271,438	2,602,155	8,873,593
Breakage	\$ 1,406,250	576,810	1,983,060
Horse Racing Tax Allocation	\$ 0	0	0
License Fee	\$ 46,350	76,860	123,210
License Fee - Daily Handle	\$ 16,100	200	16,300
Admission Tax	\$ 78,686	41,676	120,362
Uncashed Tickets (1995)	\$ 664,112	381,525	1,045,637
<b>TOTAL REVENUE TO STATE</b>	<b>\$ 8,482,936</b>	<b>3,679,226</b>	<b>12,162,162</b>
<b>AVG. DAILY STATE REVENUE</b>	<b>\$ 21,207</b>	<b>6,061</b>	<b>12,078</b>

## INTERTRACK

THOROUGHBRED MEETS	HARNESS MEETS	ALL MEETS
1,999	3,054	5,053 Live Programs Raced
N/A	N/A	N/A Total Live + Dark Days
N/A	N/A	N/A Live Races Run
577,547	503,817	1,081,364 Attendance

58,781,013	64,506,289	123,287,302 Illinois Handle on Illinois Races
91,087,591	79,915,747	171,003,338 Illinois Handle on Out-of-State Races on Live Days
149,868,604	144,422,036	294,290,640 Combined Illinois Handle on Live Days
15,360,596	0	15,360,596 Illinois Handle on Out-of-State Races on Dark Days
<b>165,229,200</b>	<b>144,422,036</b>	<b>309,651,236 Combined Illinois Handle on Live + Dark Days</b>
53.36%	46.64%	Percentage of Total Combined Illinois Handle
106,448,187	79,915,747	186,363,934 Ill. Handle on Out-of-State Races on Live + Dark Days

146,953	106,271	122,430 Average Illinois Handle on Illinois Races
227,719	131,657	169,815 Avg. Ill. Handle on Out-of-State Races on Live Days
374,672	237,928	292,245 Average Combined Illinois Handle on Live Days
274,296	N/A	274,296 Avg. Ill. Handle on Out-of-State Races on Dark Days
<b>362,345</b>	<b>237,928</b>	<b>291,299 Avg. Combined Illinois Handle on Live + Dark Days</b>
233,439	131,657	175,319 Avg. Ill. Handle on OutofState Races on Live+Dark Days

165,229,200	144,422,036	309,651,236 Combined Illinois Handle
33,111,858	29,516,244	62,628,102 -Commission (Take Out)
13,376,882	12,126,727	25,503,609 Track Commission
13,376,882	12,126,727	25,503,609 Purses Earned
3,193,446	2,397,472	5,590,918 Out-of-State Simulcast Fee (3%)
3,164,648	2,865,318	6,029,966 Privilege Tax
0	0	0 Horse Racing Tax Allocation
132,117,342	114,905,792	247,023,134 Public Pool
949,935	880,564	1,830,499 -Breakage
474,968	440,282	915,250 Race Track Improvement Fund
474,968	440,282	915,250 Breakage to General Revenue
2,606,316	1,724,332	4,330,648 -Surcharge
128,561,091	112,300,896	240,861,987 Payout to Public
3,164,648	2,865,318	6,029,966 Privilege Tax
949,935	880,564	1,830,499 Breakage
0	0	0 Horse Racing Tax Allocation
0	0	0 License Fee
0	0	0 License Fee - Daily Handle
44,611	27,690	72,301 Admission Tax
571,424	555,372	1,126,796 Uncashed Tickets (1995)
4,730,618	4,328,944	9,059,562 <b>TOTAL REVENUE TO STATE</b>
11,827	7,132	8,997 <b>AVG. DAILY STATE REVENUE</b>



## OFF TRACK

	THOROUGHBRED MEETS	HARNESS MEETS	ALL MEETS
Live Programs Raced	8,540	12,981	21,521
Total Live + Dark Days	N/A	N/A	N/A
Live Races Run	N/A	N/A	N/A
Attendance	N/A	N/A	N/A

Illinois Handle on Illinois Races	104,298,946	124,914,251	229,213,197
Illinois Handle on Out-of-State Races on Live Days	173,668,551	143,176,340	316,844,891
Combined Illinois Handle on Live Days	277,967,497	268,090,591	546,058,088
Illinois Handle on Out-of-State Races on Dark Days	32,141,297	0	32,141,297
<b>Combined Illinois Handle on Live + Dark Days</b>	<b>310,108,794</b>	<b>268,090,591</b>	<b>578,199,385</b>
Percentage of Total Combined Illinois Handle	53.63%	46.37%	
Ill. Handle on Out-of-State Races on Live + Dark Days	205,809,848	143,176,340	348,986,188

Average Illinois Handle on Illinois Races	260,747	205,790	227,620
Avg. Ill. Handle on Out-of-State Races on Live Days	434,171	235,875	314,642
Average Combined Illinois Handle on Live Days	694,919	441,665	542,262
Avg. Ill. Handle on Out-of-State Races on Dark Days	573,952	N/A	573,952
<b>Avg. Combined Illinois Handle on Live + Dark Days</b>	<b>680,063</b>	<b>441,665</b>	<b>543,932</b>
Avg. Ill. Handle on OutofState Races on Live+Dark Days	451,337	235,875	328,303

Combined Illinois Handle	\$ 310,108,794	268,090,591	578,199,385
-Commission (Take Out)	\$ 62,387,834	55,240,723	117,628,558
Track Commission	\$ 28,252,138	27,274,105	55,526,243
Purses Earned	\$ 18,844,758	15,557,744	34,402,502
Out-of-State Simulcast Fee (3%)	\$ 6,174,295	4,295,290	10,469,586
Privilege Tax	\$ 6,015,554	5,432,679	11,448,233
Horse Racing Tax Allocation	\$ 3,101,089	2,680,905	5,781,994
Public Pool	\$ 247,720,960	212,849,868	460,570,827
-Breakage	\$ 1,660,338	1,452,341	3,112,679
Race Track Improvement Fund	\$ 830,169	726,171	1,556,340
Breakage to General Revenue	\$ 830,169	726,171	1,556,340
-Surcharge	\$ 7,361,726	5,253,439	12,615,165
Payout to Public	\$ 238,698,896	206,144,088	444,842,983
Privilege Tax	\$ 6,015,554	5,432,679	11,448,233
Breakage	\$ 1,660,338	1,452,341	3,112,679
Horse Racing Tax Allocation	\$ 3,101,089	2,680,905	5,781,994
License Fee	\$ 0	0	0
License Fee - Daily Handle	\$ 0	0	0
Admission Tax	\$ 0	0	0
Uncashed Tickets (1995)	\$ 1,054,153	1,072,657	2,126,809
<b>TOTAL REVENUE TO STATE</b>	<b>\$ 11,831,134</b>	<b>10,638,582</b>	<b>22,469,715</b>
<b>AVG. DAILY STATE REVENUE</b>	<b>\$ 29,578</b>	<b>17,526</b>	<b>22,314</b>

## ALL LOCATIONS

THOROUGHBRED MEETS	HARNESS MEETS	ALL MEETS	
10,939	16,642	27,581	Live Programs Raced
456	607	1,063	Total Live + Dark Days
3,743	6,265	10,008	Live Races Run
2,095,620	1,346,276	3,441,896	Attendance
50,843,274	37,141,615	87,984,889	Purse Distribution
299,235,752	254,473,576	553,709,328	Illinois Handle on Illinois Races
<u>326,830,997</u>	<u>246,619,623</u>	<u>573,450,620</u>	Illinois Handle on Out-of-State Races on Live Days
626,066,749	501,093,199	1,127,159,948	Combined Illinois Handle on Live Days
52,873,766	0	52,873,766	Illinois Handle on Out-of-State Races on Dark Days
<b>678,940,515</b>	<b>501,093,199</b>	<b>1,180,033,714</b>	<b>Combined Illinois Handle on Live + Dark Days</b>
57.54%	42.46%		Percentage of Total Combined Illinois Handle
379,704,763	246,619,623	626,324,386	Ill. Handle on Out-of-State Races on Live + Dark Days
351,744,243	173,248,116	524,992,359	Out-of-State Handle (Commingled) on Illinois Programs
977,810,992	674,341,315	1,652,152,307	Total Meet Handle on Live Days
1,030,684,758	674,341,315	1,705,026,073	Total Meet Handle on Live + Dark Days

748,089	419,232	549,860	Average Illinois Handle on Illinois Races
817,077	406,293	569,464	Avg. Ill. Handle on Out-of-State Races on Live Days
1,565,167	825,524	1,119,325	Average Combined Illinois Handle on Live Days
944,174	N/A	944,174	Avg. Ill. Handle on Out-of-State Races on Dark Days
<b>1,488,905</b>	<b>825,524</b>	<b>1,110,098</b>	<b>Avg. Combined Illinois Handle on Live + Dark Days</b>
832,686	406,293	589,205	Avg. Ill. Handle on OutofState Races on Live+Dark Days
879,361	285,417	521,343	Avg. Out-of-State Handle (Commingled) on Illinois Programs
2,444,527	1,110,941	1,640,668	Average Total Meet Handle on Live Days
2,260,274	1,110,941	1,603,976	Average Total Meet Handle on Live + Dark Days

678,940,515	501,093,199	1,180,033,714	Combined Illinois Handle
135,878,004	102,793,875	238,671,879	-Commission (Take Out)
57,670,756	46,765,295	104,436,051	Track Commission
48,263,376	35,048,934	83,312,310	Purses Earned
11,391,143	7,398,589	18,789,732	Out-of-State Simulcast Fee (3%)
15,451,640	10,900,152	26,351,792	Privilege Tax
3,101,089	2,680,905	5,781,994	Horse Racing Tax Allocation
543,062,511	398,299,324	941,361,835	Public Pool
4,016,523	2,909,715	6,926,238	-Breakage
2,008,262	1,454,858	3,463,119	Race Track Improvement Fund
2,008,262	1,454,858	3,463,119	Breakage to General Revenue
11,233,044	7,431,289	18,664,333	-Surcharge
527,812,944	387,958,320	915,771,264	Payout to Public
15,451,640	10,900,152	26,351,792	Privilege Tax
4,016,523	2,909,715	6,926,238	Breakage
3,101,089	2,680,905	5,781,994	Horse Racing Tax Allocation
46,350	76,860	123,210	License Fee
16,100	200	16,300	License Fee - Daily Handle
123,297	69,366	192,663	Admission Tax
2,289,689	2,009,553	4,299,242	Uncashed Tickets (1995)
25,044,688	18,646,751	43,691,439	<b>TOTAL REVENUE TO STATE</b>
62,612	30,720	43,388	<b>AVG. DAILY STATE REVENUE</b>



## 1997 COMPARISON OF WAGERING POOLS

% THOROUGHBRED MEETS		TOTAL HANDLE	ON TRACK	%	INTER TRACK	%	OFF TRACK	%
Arlington Int'l Racecourse								
39.45%	WIN, PLACE AND SHOW	120,816,848	48,959,848	40.52%	24,633,748	20.39%	47,223,252	39.09%
36.13%	2-HORSE	110,655,177	37,895,903	34.25%	23,128,993	20.90%	49,630,281	44.85%
24.42%	3-HORSE	74,784,935	23,193,279	31.01%	15,839,128	21.18%	35,752,528	47.81%
	TOTAL HANDLE	306,256,960	110,049,030	35.93%	63,601,869	20.77%	132,606,061	43.30%
Haythorne Race Course								
36.53%	WIN, PLACE AND SHOW	55,246,690	12,760,649	23.10%	15,967,871	28.90%	26,518,170	48.00%
37.72%	2-HORSE	57,040,526	11,822,501	20.73%	16,575,398	29.06%	28,642,627	50.21%
25.74%	3-HORSE	38,931,064	6,920,093	17.78%	11,703,398	30.06%	20,307,573	52.16%
	TOTAL HANDLE	151,218,280	31,503,243	20.83%	44,246,667	29.26%	75,468,370	49.91%
National Jockey Club (Spts)								
38.59%	WIN, PLACE AND SHOW	73,422,640	18,930,541	25.78%	20,196,156	27.51%	34,295,943	46.71%
36.73%	2-HORSE	69,869,674	15,851,570	22.69%	19,499,425	27.91%	34,518,679	49.40%
24.68%	3-HORSE	46,952,691	10,028,534	21.36%	13,840,189	29.48%	23,083,968	49.16%
	TOTAL HANDLE	190,245,005	44,810,645	23.55%	53,535,770	28.14%	91,898,590	48.31%
Ogden-Fairmount								
38.65%	WIN, PLACE AND SHOW	12,066,751	6,887,982	57.08%	1,574,221	13.05%	3,604,548	29.87%
38.75%	2-HORSE	12,097,338	6,377,667	52.72%	1,516,384	12.53%	4,203,287	34.75%
22.60%	3-HORSE	7,056,181	3,973,954	56.32%	754,289	10.69%	2,327,938	32.99%
	TOTAL HANDLE	31,220,270	17,239,603	55.22%	3,844,894	12.32%	10,135,773	32.47%
<b>THOROUGHBRED TOTAL</b>								
38.52%	WIN, PLACE AND SHOW	261,552,929	87,539,020	33.47%	62,371,996	23.85%	111,641,913	42.68%
36.77%	2-HORSE	249,662,715	71,947,641	28.82%	60,720,200	24.32%	116,994,874	46.86%
24.70%	3-HORSE	167,724,871	44,115,860	26.30%	42,137,004	25.12%	81,472,007	48.57%
	TOTAL HANDLE	678,940,515	203,602,521	29.99%	165,229,200	24.34%	310,108,794	45.68%

% HARNESS MEETS		TOTAL HANDLE	ON TRACK	%	INTER TRACK	%	OFF TRACK	%
Balmoral Racing Club								
35.79%	WIN, PLACE AND SHOW	58,755,271	6,741,319	11.47%	21,320,984	36.29%	30,692,968	52.24%
33.79%	2-HORSE	55,466,947	5,630,420	10.15%	18,456,525	33.27%	31,380,002	56.57%
30.42%	3-HORSE	49,945,279	5,534,644	11.08%	16,323,133	32.68%	28,087,502	56.24%
	TOTAL HANDLE	164,167,497	17,906,383	10.91%	56,100,642	34.17%	90,160,472	54.92%
Maywood Park Trot. Assoc.								
34.91%	WIN, PLACE AND SHOW	11,219,605	2,417,512	21.55%	2,961,858	26.40%	5,840,235	52.05%
36.74%	2-HORSE	11,807,525	2,160,653	18.30%	3,063,493	25.95%	6,583,379	55.76%
28.35%	3-HORSE	9,109,008	1,672,906	18.37%	2,342,673	25.72%	5,093,429	55.92%
	TOTAL HANDLE	32,136,138	6,251,071	19.45%	8,368,024	26.04%	17,517,043	54.51%
Associates Racing Assoc.								
34.89%	WIN, PLACE AND SHOW	5,420,056	1,348,055	24.87%	1,327,011	24.48%	2,744,990	50.65%
32.70%	2-HORSE	5,079,840	1,032,284	20.32%	1,259,776	24.80%	2,787,780	54.88%
32.42%	3-HORSE	5,035,978	1,078,080	21.41%	1,187,351	23.58%	2,770,547	55.02%
	TOTAL HANDLE	15,535,874	3,458,419	22.26%	3,774,138	24.29%	8,303,317	53.45%

% HARNESS MEETS		TOTAL HANDLE	ON TRACK	%	INTER TRACK	%	OFF TRACK	%
Egyptian Trotting Assoc.								
34.02%	WIN, PLACE AND SHOW	5,073,312	1,164,020	22.94%	1,324,065	26.10%	2,585,227	50.96%
32.03%	2-HORSE	4,776,322	949,430	19.88%	1,168,980	24.47%	2,657,912	55.65%
33.94%	3-HORSE	5,061,299	1,034,193	20.43%	1,220,520	24.11%	2,806,586	55.45%
	TOTAL HANDLE	14,910,933	3,147,643	21.11%	3,713,565	24.90%	8,049,725	53.99%
Maywood Park (All 3 Meets)								
34.69%	WIN, PLACE AND SHOW	21,712,973	4,929,587	22.70%	5,612,934	25.85%	11,170,452	51.45%
34.62%	2-HORSE	21,663,687	4,142,367	19.12%	5,492,249	25.35%	12,029,071	55.53%
30.69%	3-HORSE	19,206,285	3,785,179	19.71%	4,750,544	24.73%	10,670,562	55.56%
	TOTAL HANDLE	62,582,945	12,857,133	20.54%	15,855,727	25.34%	33,870,085	54.12%
Chicago Downs Association								
35.70%	WIN, PLACE AND SHOW	31,880,300	7,423,254	23.28%	8,548,422	26.81%	15,908,624	49.90%
34.01%	2-HORSE	30,374,396	6,100,212	20.08%	7,686,272	25.31%	16,587,912	54.61%
30.29%	3-HORSE	27,056,224	4,907,732	18.14%	7,168,442	26.49%	14,980,050	55.37%
	TOTAL HANDLE	89,310,920	18,431,198	20.64%	23,403,136	26.20%	47,476,586	53.16%
Fox Valley Trotting Club								
35.86%	WIN, PLACE AND SHOW	20,842,052	4,756,389	22.82%	5,737,643	27.53%	10,348,020	49.65%
34.08%	2-HORSE	19,806,984	3,772,257	19.05%	5,182,172	26.16%	10,852,555	54.79%
30.06%	3-HORSE	17,468,245	3,202,172	18.33%	4,620,840	26.45%	9,645,233	55.22%
	TOTAL HANDLE	58,117,281	11,730,818	20.18%	15,540,655	26.74%	30,845,808	53.08%
Sportsman's Park (Both)								
35.76%	WIN, PLACE AND SHOW	52,722,352	12,179,643	23.10%	14,286,065	27.10%	26,256,644	49.80%
34.04%	2-HORSE	50,181,380	9,872,469	19.67%	12,868,444	25.64%	27,440,467	54.68%
30.20%	3-HORSE	44,524,469	8,109,904	18.21%	11,789,282	26.48%	24,625,283	55.31%
	TOTAL HANDLE	147,428,201	30,162,016	20.46%	38,943,791	26.42%	78,322,394	53.13%
DuQuoin State Fair								
43.89%	WIN, PLACE AND SHOW	387,343	192,131	49.60%	93,381	24.11%	101,831	26.29%
39.62%	2-HORSE	349,587	130,885	37.44%	87,373	24.99%	131,329	37.57%
16.49%	3-HORSE	145,527	56,196	38.62%	33,952	23.33%	55,379	38.05%
	TOTAL HANDLE	882,457	379,212	42.97%	214,706	24.33%	288,539	32.70%
Springfield State Fair								
39.92%	WIN, PLACE AND SHOW	421,321	224,325	53.24%	74,255	17.62%	122,741	29.13%
36.79%	2-HORSE	388,292	167,402	43.11%	78,913	20.32%	141,977	36.56%
23.29%	3-HORSE	245,789	109,658	44.61%	50,460	20.53%	85,671	34.86%
	TOTAL HANDLE	1,055,402	501,385	47.51%	203,628	19.29%	350,389	33.20%
Ogden-Fairmount								
30.42%	WIN, PLACE AND SHOW	6,869,703	2,501,565	36.41%	1,396,609	20.33%	2,971,529	43.26%
35.53%	2-HORSE	8,024,301	2,928,677	36.50%	1,417,562	17.67%	3,678,062	45.84%
34.05%	3-HORSE	7,689,403	3,071,631	39.95%	1,269,111	16.50%	3,348,661	43.55%
	TOTAL HANDLE	22,583,407	8,501,873	37.65%	4,083,282	18.08%	9,998,252	44.27%
Suburban Downs (Hawth.)								
36.17%	WIN, PLACE AND SHOW	37,036,245	7,516,908	20.30%	10,289,905	27.78%	19,229,432	51.92%
38.26%	2-HORSE	39,176,497	6,678,933	17.05%	10,893,738	27.81%	21,603,826	55.14%
25.57%	3-HORSE	26,180,548	4,076,729	15.57%	7,836,617	29.93%	14,267,202	54.50%
	TOTAL HANDLE	102,393,290	18,272,570	17.85%	29,020,260	28.34%	55,100,460	53.81%
<b>HARNESS TOTAL</b>								
35.50%	WIN, PLACE AND SHOW	177,905,208	34,285,478	19.27%	53,074,133	29.83%	90,545,597	50.90%
34.97%	2-HORSE	175,250,691	29,551,153	16.86%	49,294,804	28.13%	96,404,734	55.01%
29.52%	3-HORSE	147,937,300	24,743,941	16.73%	42,053,099	28.43%	81,140,260	54.85%
	TOTAL HANDLE	501,093,199	88,580,572	17.68%	144,422,036	28.82%	268,090,591	53.50%
<b>ALL RACING TOTAL</b>								
37.24%	WIN, PLACE AND SHOW	439,458,137	121,824,498	27.72%	115,446,129	26.27%	202,187,510	46.01%
36.01%	2-HORSE	424,913,406	101,498,794	23.89%	110,015,004	25.89%	213,399,608	50.22%
26.75%	3-HORSE	315,662,171	68,859,801	21.81%	84,190,103	26.67%	162,612,267	51.51%
	TOTAL HANDLE	1,180,033,714	292,183,093	24.76%	309,651,236	26.24%	578,199,385	49.00%

## 1997 OFF TRACK PARLOR HANDLES

	LIVE ILLINOIS HANDLE	SIMULCAST HANDLE	TOTAL HANDLE	AVERAGE DAILY HANDLE
OAKBROOK TERRACE - Hawthorne	29,207,489	43,155,091	72,362,580	198,254
CRESTWOOD - Sportsman's (NJC)	32,360,478	37,594,920	69,955,398	191,659
CHICAGO (Weed St.) - Arlington	22,218,227	43,764,877	65,983,104	180,776
CHICAGO (Corliss) - Balmoral	26,624,716	31,801,089	58,425,805	160,071
CHICAGO (State St.) - Hawthorne	17,812,354	29,237,849	47,050,203	128,905
CHICAGO (W. Jackson) - Maywood	16,342,637	26,778,279	43,120,916	118,139
WAUKEGAN - Arlington	14,714,632	27,453,513	42,168,145	115,529
NORTH AURORA - Maywood	12,114,860	14,948,741	27,063,601	74,147
ROCKFORD - Quad City Downs	11,332,445	14,982,087	26,314,532	72,095
JOLIET - Sportsman's (NJC)	7,053,243	9,727,634	16,780,877	45,975
SPRINGFIELD - Fairmount	5,343,841	10,667,783	16,011,624	43,867
ALTON-BELLE - Fairmount	4,975,435	10,343,061	15,318,496	41,968
JOLIET EMPRESS - Maywood	5,029,771	6,726,609	11,756,380	32,209
BLOOMINGTON - Balmoral	4,089,781	7,479,494	11,569,275	31,697
RICHMOND - Quad City Downs	3,595,411	6,040,423	9,635,834	26,400
CHAMPAIGN - Balmoral	3,200,371	5,514,327	8,714,698	23,876
DANVILLE - Balmoral	2,898,874	5,626,760	8,525,634	23,358
CARBONDALE - Fairmount	2,706,426	5,268,499	7,974,925	21,849
GRAYVILLE - Fairmount	1,984,044	4,984,816	6,968,860	19,093
PERU - Sportsman's (NJC)	3,115,817	2,988,758	6,104,575	16,725
EFFINGHAM - Fairmount	1,842,124	2,595,197	4,437,321	12,157
QUINCY - Fairmount	650,221	1,306,381	1,956,602	5,361
<b>TOTAL</b>	<b>229,213,197</b>	<b>348,986,188</b>	<b>578,199,385</b>	<b>1,584,108</b>

## 1997 INTERTRACK HANDLES

	LIVE ILLINOIS HANDLE	SIMULCAST HANDLE	TOTAL HANDLE	AVERAGE DAILY HANDLE
ARLINGTON INT'L RACECOURSE	33,395,010	57,627,252	91,022,262	249,376
MAYWOOD PARK	34,249,309	46,190,392	80,439,701	220,383
FAIRMOUNT PARK	14,665,688	40,846,396	55,512,084	152,088
SPORTSMAN'S PARK	17,253,592	17,030,630	34,284,222	143,449
HAWTHORNE RACE COURSE	5,029,990	4,144,803	9,174,793	72,816
BALMORAL PARK	12,136,928	12,198,567	24,335,495	66,673
QUAD CITY DOWNS	6,556,785	8,325,894	14,882,679	40,774
<b>TOTAL</b>	<b>123,287,302</b>	<b>186,363,934</b>	<b>309,651,236</b>	<b>848,360</b>

**SUMMARY OF SURCHARGES AND REVENUES TO LOCAL GOVERNMENTS  
FROM OFF TRACK PARLORS IN 1997**

<b>CITY - Licensee</b>	<b>TOTAL SURCHARGE - ON WINNINGS</b>	<b>ADDITIONAL ARLINGTON = 1.25 % SURCHARGE</b>	<b>SURCHARGE USED TO PAY CITY AND COUNTY</b>	<b>REVENUE TO CITY (1% OF HANDLE)</b>	<b>REVENUE TO COUNTY (1% OF HANDLE)</b>	<b>OVER/ (UNDER) TO LICENSEE</b>
<b>Date Opened - County</b>	<b>HANDLE</b>	<b>WINNINGS</b>	<b>SURCHARGE</b>	<b>CITY AND COUNTY</b>	<b>HANDLE)</b>	<b>HANDLE)</b>
<b>WAUKEGAN - Arlington</b> December 30, 1988 - Lake	42,168,145	933,770	108,811	824,959	421,681	421,681 (18,404)
<b>CHICAGO (Weed St.) - Arlington</b> June 4, 1993 - Cook	65,983,104	1,461,549	156,322	1,305,227	659,831	659,831 (14,435)
<b>DANVILLE - Balmoral</b> January 24, 1991 - Vermillion	8,525,634	179,438	19,300	160,138	85,256	85,256 (10,374)
<b>CHICAGO (Corliss) - Balmoral</b> April 18, 1991 - Cook	58,425,805	1,231,567	117,058	1,114,509	584,258	584,258 (54,007)
<b>CHAMPAIGN - Balmoral</b> April 29, 1992 - Champaign	8,714,698	187,789	20,444	167,345	87,147	87,147 (6,949)
<b>BLOOMINGTON - Balmoral</b> May 26, 1992 - McLean	11,569,275	252,005	26,374	225,631	115,693	115,693 (5,754)
<b>SPRINGFIELD - Fairmount</b> May 5, 1988 - Sangamon	16,011,624	348,559	32,108	316,451	160,116	160,116 (3,781)
<b>GRAYVILLE - Fairmount</b> August 7, 1989 - White	6,968,860	151,772	16,233	135,539	69,689	69,689 (3,839)
<b>EFFINGHAM - Fairmount</b> April 16, 1992 - Effingham	4,437,321	94,345	8,091	86,254	44,373	44,373 (2,493)
<b>QUINCY - Fairmount</b> April 30, 1992 - Adams	1,956,602	39,880	2,524	37,356	19,566	19,566 (1,776)
<b>CARBONDALE - Fairmount</b> August 20, 1992 - Jackson	7,974,925	178,387	17,976	160,411	79,749	79,749 912
<b>ALTON-BELLE - Fairmount</b> August 18, 1994 - Madison	15,318,496	334,887	32,719	302,168	153,185	153,185 (4,202)
<b>CHICAGO (State St.) - Hawthorne</b> October 24, 1989 - Cook	47,050,203	1,044,983	114,593	930,390	470,502	470,502 (10,614)
<b>OAKBROOK TERRACE - Hawthorne</b> September 4, 1992 - DuPage	72,362,580	1,574,204	154,276	1,419,928	723,626	723,626 (27,324)
<b>CHICAGO (W. Jackson) - Maywood</b> July 19, 1988 - Cook	43,120,916	952,837	104,968	847,869	431,209	431,209 (14,549)
<b>NORTH AURORA - Maywood</b> May 31, 1989 - Kane	27,063,601	592,794	59,638	533,156	270,636	270,636 (8,116)
<b>JOLIET EMPRESS - Maywood</b> January 20, 1994 - Will	11,756,380	255,396	23,016	232,380	117,564	117,564 (2,748)
<b>JOLIET - Sportsman's (NJC)</b> October 25, 1990 - Will	16,780,877	363,358	36,180	327,178	167,809	167,809 (8,439)
<b>CRESTWOOD - Sportsman's (NJC)</b> February 17, 1992 - Cook	69,955,398	1,515,217	149,553	1,365,664	699,554	699,554 (33,444)
<b>PERU - Sportsman's (NJC)</b> March 5, 1992 - LaSalle	6,104,575	129,640	11,036	118,604	61,046	61,046 (3,487)
<b>ROCKFORD - Quad City Downs</b> November 18, 1987 - Winnebago	26,314,532	576,268	56,120	520,148	263,145	263,145 (6,143)
<b>RICHMOND - Quad City Downs</b> November 28, 1992 - McHenry	9,635,834	216,524	28,761	187,763	96,358	96,358 (4,954)
<b>TOTAL</b>	<b>578,199,385</b>	<b>12,615,169</b>	<b>1,296,101</b>	<b>11,319,068</b>	<b>5,781,994</b>	<b>5,781,994 (244,919)</b>



## 1997 COMMINGLED HANDLE VS. SIMULCAST HANDLE

	COMMINGLED IN	SIMULCAST OUT	
	OUT-OF-STATE HANDLE INTO ILLINOIS POOLS	ILLINOIS HANDLE ON OUT-OF- STATE RACES	"TRADE BALANCE" DIFFERENCE
<b>THOROUGHBRED</b>			
NATIONAL JOCKEY CLUB (SPORTSMAN'S)	74,145,361	120,616,248	(46,470,887)
ARLINGTON INTERNATIONAL RACECOURSE	165,174,372	170,531,450	(5,357,078)
HAWTHORNE RACE COURSE	95,566,435	86,089,385	9,477,050
FAIRMOUNT PARK	16,858,075	2,467,680	14,390,395
<b>THOROUGHBRED TOTAL</b>	<b>351,744,243</b>	<b>379,704,763</b>	<b>(27,960,520)</b>
	COMMINGLED IN	SIMULCAST OUT	
	OUT-OF-STATE HANDLE INTO ILLINOIS POOLS	ILLINOIS HANDLE ON OUT-OF- STATE RACES	"TRADE BALANCE" DIFFERENCE
<b>HARNESS</b>			
SUBURBAN DOWNS (HAWTHORNE)	22,185,315	63,622,565	(41,437,250)
BALMORAL RACING CLUB	57,887,497	83,558,752	(25,671,255)
MAYWOOD PARK TROTTING	15,495,273	8,642,944	6,852,329
EGYPTIAN TROTTING (MAYWOOD)	11,482,499	3,701,624	7,780,875
ASSOCIATES RACING (MAYWOOD)	9,046,340	4,288,746	4,757,594
CHICAGO DOWNS (SPORTSMAN'S)	25,933,569	50,312,145	(24,378,576)
FOX VALLEY (SPORTSMAN'S)	21,978,094	30,697,118	(8,719,024)
FAIRMOUNT PARK	9,080,967	1,795,729	7,285,238
SPRINGFIELD FAIR	65,039	0	65,039
DUQUOIN FAIR	93,523	0	93,523
<b>HARNESS TOTAL</b>	<b>173,248,116</b>	<b>246,619,623</b>	<b>(73,371,507)</b>
<b>ALL RACING TOTAL</b>	<b>524,992,359</b>	<b>626,324,386</b>	<b>(101,332,027)</b>

Note: Fairmount Park was never a host for state-wide simulcasts.  
The 3 Maywood meets were seldom a host for state-wide simulcasts.

## 1997 ILLINOIS HANDLE ON OUT-OF-STATE TRACKS

TRACK	ILLINOIS HANDLE	PROGRAMS	AVERAGE
Gulfstream	27,982,959	62	451,338
Churchill	33,911,684	79	429,262
Hollywood	16,167,202	56	288,700
Oaklawn	15,177,919	55	275,962
Saratoga	9,850,608	36	273,628
Keeneland	8,972,116	35	256,346
Del Mar	10,545,290	44	239,666
Hialeah	14,334,598	60	238,910
Fairgrounds	20,165,541	87	231,788
Louisiana Downs	17,727,110	80	221,589
Calder	37,079,615	171	216,840
Turfway	21,921,421	103	212,829
Pimlico	12,239,041	58	211,018
Ellis Park	11,334,132	55	206,075
Aqueduct	28,245,706	145	194,798
Monmouth	13,393,850	71	188,646
Santa Anita	20,394,891	113	180,486
Lone Star	14,192,980	80	177,412
Bay Meadows	11,603,028	70	165,758
Delaware	8,955,921	59	151,795
Golden Gate	10,971,211	73	150,291
Laurel	22,053,376	150	147,023
Belmont	11,502,919	83	138,589
Philadelphia	10,855,594	83	130,790
Los Alamitos	25,886,638	199	130,084
Ohio	11,809,309	92	128,362
Tampa Bay	3,309,780	26	127,299
Sam Houston	15,268,053	125	122,144
Evangeline	9,727,094	80	121,589
Penn National	17,068,829	155	110,121
Garden State	9,948,062	91	109,319
Hoosier	7,480,149	69	108,408
Detroit	7,038,327	66	106,641
Meadowlands	24,259,446	232	104,567
Suffolk	3,471,197	34	102,094
Remington	7,429,242	73	101,770
Cal Expo	7,276,622	74	98,333
Prairie Meadows	7,153,883	74	96,674
Retama	5,278,458	57	92,605
Canterbury	2,157,545	25	86,302
Colonial	2,299,435	27	85,164
Northfield	10,857,962	136	79,838
Yonkers	3,103,677	47	66,036
Woodbine	5,747,629	91	63,161
Foxboro	3,705,495	59	62,805
Freehold	2,501,397	51	49,047
Mohawk	3,467,955	76	45,631
Meadows	5,293,581	169	31,323
All Others	15,205,909	357	42,594
<b>TOTAL</b>	<b>626,324,386</b>	<b>4,393</b>	<b>142,573</b>

# 1997 RACING DATES

## THOROUGHBRED RACING DATES

<b>SPORTSMAN'S PARK</b>	<b>(74 Days)</b>	<b>6 day week</b>	
National Jockey Club .....		February 14 - May 10 .....	74 Days
<b>ARLINGTON INTERNATIONAL RACECOURSE</b>	<b>(119 Days)</b>	<b>5-6 day week</b>	
Arlington International Racecourse, Inc. ....		May 11 - October 10 .....	119 Days
<b>HAWTHORNE RACE COURSE</b>	<b>(80 Days)</b>	<b>6 day week (2 day through Oct. 7)</b>	
Hawthorne Race Course, Inc. ....		September 8 - December 31 .....	80 Days
<b>FAIRMOUNT PARK</b>	<b>(127 Days)</b>	<b>3-5 day/night week</b>	
Ogden-Fairmount, Inc. ....		March 29 - October 5 .....	127 Days

## HARNESS RACING DATES

<b>HAWTHORNE RACE COURSE</b>	<b>(44 Days,70 Programs)</b>	<b>7 day/night week, 26 DH</b>	
Suburban Downs, Inc. ....		January 1 - February 13 .....	70 Programs
<b>BALMORAL PARK</b>	<b>(181 Days)</b>	<b>2-5 night week</b>	
Balmoral Racing Club, Inc. ....		January 1 - December 31 .....	181 Days
<b>MAYWOOD PARK</b>	<b>(118 Days)</b>	<b>5 night week</b>	
Maywood Park Trotting Association, Inc. ....		February 14 - May 10 .....	62 Days
Associates Racing Association, Inc. ....		October 11 - November 19 .....	28 Days
Egyptian Trotting Association, Inc. ....		November 20 - December 31 .....	28 Days
<b>SPORTSMAN'S PARK</b>	<b>(131 Days)</b>	<b>6 night week</b>	
Chicago Downs Association, Inc. ....		May 11 - August 11 .....	79 Days
Fox Valley Trotting Club, Inc. ....		August 12 - October 10 .....	52 Days
<b>FAIRMOUNT PARK</b>	<b>(113 Days)</b>	<b>5 day/night week</b>	
Ogden-Fairmount, Inc. ....		January 3 - March 16, October 10 - December 31 .....	113 Days

# 1998 RACING DATES

## THOROUGHBRED RACING DATES

<b>SPORTSMAN'S PARK</b>	<b>(105 Days)</b>	<b>6 day week</b>	
National Jockey Club .....		March 1 - June 30 .....	105 Days
<b>HAWTHORNE RACE COURSE</b>	<b>(129 Days)</b>	<b>6 day week</b>	
Hawthorne Race Course, Inc. ....		July 1 - November 28 .....	129 Days
<b>FAIRMOUNT PARK</b>	<b>(125 Days)</b>	<b>5 day/night week</b>	
Ogden-Fairmount, Inc. ....		March 27 - September 12 .....	125 Days

## HARNESS RACING DATES

<b>BALMORAL PARK</b>	<b>(208 Days)</b>	<b>4 night week</b>	
Balmoral Racing Club, Inc. ....		January 1 - December 31 .....	208 Days
<b>MAYWOOD PARK</b>	<b>(155 Days)</b>	<b>3 night week</b>	
Maywood Park Trotting Association, Inc. ....		January 1 - June 30 .....	77 Days
Egyptian Trotting Association, Inc. ....		July 1 - September 29 .....	39 Days
Associates Racing Association, Inc. ....		September 30 - December 31 .....	39 Days
<b>FAIRMOUNT PARK</b>	<b>(105 Days)</b>	<b>5 day/night week</b>	
Ogden-Fairmount, Inc. ....		January 1 - March 1, September 19 - December 31 .....	105 Days



## NATIONAL JOCKEY CLUB - SPORTSMAN'S PARK FEBRUARY 14 - MAY 10

	ON TRACK AT SPORTSMAN'S	INTER TRACK ON SPORTSMAN'S	OFF TRACK ON SPORTSMAN'S	ALL LOCATIONS ON SPORTSMAN'S
<b>THOROUGHBRED MEET</b>				
Live Programs Raced	74	370	1,628	2,072
Total Live + Dark Days	86	0	0	86
Live Races Run	671	0	0	671
Attendance	263,770	168,308	N/A	432,078
Purse Distribution				11,938,465
Illinois Handle on Illinois Races	26,197,451	16,241,485	27,189,821	69,628,757
Illinois Handle on Out-of-State Races on Live Days	17,100,998	32,416,101	55,007,017	104,524,116
Combined Illinois Handle on Live Days	43,298,449	48,657,586	82,196,838	174,152,873
Illinois Handle on Out-of-State Races on Dark Days	1,512,196	4,878,184	9,701,752	16,092,132
<b>Combined Illinois Handle on Live + Dark Days</b>	<b>44,810,645</b>	<b>53,535,770</b>	<b>91,898,590</b>	<b>190,245,005</b>
Percentage of Total Combined Illinois Handle	23.55%	28.14%	48.31%	
Ill. Handle on Out-of-State Races on Live + Dark Days	18,613,194	37,294,285	64,708,769	120,616,248
Out-of-State Handle (Commingled) on Illinois Programs				74,145,361
Total Meet Handle on Live Days				248,298,234
Total Meet Handle on Live + Dark Days				264,390,366
Average Illinois Handle on Illinois Races	354,020	219,480	367,430	940,929
Avg. Ill. Handle on Out-of-State Races on Live Days	231,095	438,055	743,338	1,412,488
Average Combined Illinois Handle on Live Days	585,114	657,535	1,110,768	2,353,417
Avg. Ill. Handle on Out-of-State Races on Dark Days	126,016	406,515	808,479	1,341,011
<b>Avg. Combined Illinois Handle on Live + Dark Days</b>	<b>521,054</b>	<b>622,509</b>	<b>1,068,588</b>	<b>2,212,151</b>
Avg. Ill. Handle on OutofState Races on Live+Dark Days	216,432	433,654	752,428	1,402,515
Avg. Out-of-State Handle (Commingled) on Illinois Programs				1,001,964
Average Total Meet Handle on Live Days				3,355,382
Average Total Meet Handle on Live + Dark Days				3,074,307
Combined Illinois Handle	\$ 44,810,645	53,535,770	91,898,590	190,245,005
-Commission (Take Out)	\$ 8,930,491	10,787,221	18,503,112	38,220,823
Track Commission *	\$ 3,463,368	4,320,203	8,170,920	15,954,491
Purses Earned **	\$ 3,463,368	4,320,203	5,716,909	13,500,480
Out-of-State Simulcast Fee (3%)	\$ 558,396	1,118,829	1,941,263	3,618,487
Privilege Tax	\$ 1,445,359	1,027,986	1,755,034	4,228,379
Horse Racing Tax Allocation	\$ 0	0	918,986	918,986
Public Pool	\$ 35,880,154	42,748,549	73,395,478	152,024,182
-Breakage	\$ 261,222	304,785	497,262	1,063,269
Race Track Improvement Fund	\$ 130,611	152,393	248,631	531,635
Breakage to General Revenue	\$ 130,611	152,393	248,631	531,635
-Surcharge	\$ 0	643,240	1,789,895	2,433,135
Payout to Public	\$ 35,618,932	41,800,524	71,108,321	148,527,778
Privilege Tax	\$ 1,445,359	1,027,986	1,755,034	4,228,379
Breakage	\$ 261,222	304,785	497,262	1,063,269
Horse Racing Tax Allocation	\$ 0	0	918,986	918,986
License Fee	\$ 9,140	0	0	9,140
License Fee - Daily Handle	\$ 2,100	0	0	2,100
Admission Tax	\$ 3,009	12,456	0	15,465
Uncashed Tickets (1995)	\$ 130,962	156,462	268,580	556,005
<b>TOTAL REVENUE TO STATE</b>	<b>\$ 1,851,792</b>	<b>1,501,689</b>	<b>3,439,862</b>	<b>6,793,344</b>
<b>AVG. DAILY STATE REVENUE</b>	<b>\$ 25,024</b>	<b>20,293</b>	<b>46,485</b>	<b>91,802</b>

\* Included are commissions earned by intertrack and off-track outlets.

\*\* Included are purses earned for Fairmount Park and race meets affiliated with intertrack outlets.

## ARLINGTON INT'L RACECOURSE, INC. - ARLINGTON INT'L RACECOURSE

### MAY 11 - OCTOBER 10

	ON TRACK AT ARLINGTON	INTER TRACK ON ARLINGTON	OFF TRACK ON ARLINGTON	ALL LOCATIONS ON ARLINGTON
<b>THOROUGHBRED MEET</b>				
Live Programs Raced	119	595	2,536	3,250
Total Live + Dark Days	153	0	0	153
Live Races Run	1,110	0	0	1,110
Attendance	771,350	249,310	N/A	1,020,660
Purse Distribution				21,213,636
Illinois Handle on Illinois Races	73,605,467	21,457,811	40,662,232	135,725,510
Illinois Handle on Out-of-State Races on Live Days	33,408,294	35,153,315	76,336,327	144,897,936
Combined Illinois Handle on Live Days	107,013,761	56,611,126	116,998,559	280,623,446
Illinois Handle on Out-of-State Races on Dark Days	3,035,269	6,990,743	15,607,502	25,633,514
<b>Combined Illinois Handle on Live + Dark Days</b>	<b>110,049,030</b>	<b>63,601,869</b>	<b>132,606,061</b>	<b>306,256,960</b>
Percentage of Total Combined Illinois Handle	35.93%	20.77%	43.30%	
Ill. Handle on Out-of-State Races on Live + Dark Days	36,443,563	42,144,058	91,943,829	170,531,450
Out-of-State Handle (Commingle) on Illinois Programs				165,174,372
Total Meet Handle on Live Days				445,797,818
Total Meet Handle on Live + Dark Days				471,431,332
Average Illinois Handle on Illinois Races	618,533	180,318	341,699	1,140,551
Avg. Ill. Handle on Out-of-State Races on Live Days	280,742	295,406	641,482	1,217,630
Average Combined Illinois Handle on Live Days	899,275	475,724	983,181	2,358,180
Avg. Ill. Handle on Out-of-State Races on Dark Days	89,273	205,610	459,044	753,927
<b>Avg. Combined Illinois Handle on Live + Dark Days</b>	<b>719,275</b>	<b>415,698</b>	<b>866,706</b>	<b>2,001,679</b>
Avg. Ill. Handle on OutofState Races on Live+Dark Days	238,193	275,451	600,940	1,114,585
Avg. Out-of-State Handle (Commingle) on Illinois Programs				1,388,020
Average Total Meet Handle on Live Days				3,746,200
Average Total Meet Handle on Live + Dark Days				3,081,251
Combined Illinois Handle	\$ 110,049,030	63,601,869	132,606,061	306,256,960
-Commission (Take Out)	\$ 21,738,226	12,708,946	26,726,111	61,173,283
Track Commission *	\$ 8,579,235	5,119,569	11,852,611	25,551,415
Purses Earned **	\$ 8,579,235	5,119,569	8,196,934	21,895,738
Out-of-State Simulcast Fee (3%)	\$ 1,093,307	1,264,322	2,758,315	5,115,944
Privilege Tax	\$ 3,486,449	1,205,486	2,592,190	7,284,125
Horse Racing Tax Allocation	\$ 0	0	1,326,061	1,326,061
Public Pool	\$ 88,310,804	50,892,923	105,879,950	245,083,678
-Breakage	\$ 825,155	379,619	711,027	1,915,801
Race Track Improvement Fund	\$ 412,578	189,810	355,514	957,901
Breakage to General Revenue	\$ 412,578	189,810	355,514	957,901
-Surcharge	\$ 1,123,169	1,389,047	3,888,302	6,400,518
Payout to Public	\$ 86,362,480	49,124,257	101,280,621	236,767,359
Privilege Tax	\$ 3,486,449	1,205,486	2,592,190	7,284,125
Breakage	\$ 825,155	379,619	711,027	1,915,801
Horse Racing Tax Allocation	\$ 0	0	1,326,061	1,326,061
License Fee	\$ 14,090	0	0	14,090
License Fee - Daily Handle	\$ 13,100	0	0	13,100
Admission Tax	\$ 45,067	21,119	0	66,186
Uncashed Tickets (1995)	\$ 258,795	149,568	311,840	720,203
<b>TOTAL REVENUE TO STATE</b>	<b>\$ 4,642,656</b>	<b>1,755,792</b>	<b>4,941,118</b>	<b>11,339,566</b>
<b>AVG. DAILY STATE REVENUE</b>	<b>\$ 39,014</b>	<b>14,755</b>	<b>41,522</b>	<b>95,290</b>

\* Included are commissions earned by intertrack and off-track outlets.

\*\* Included are purses earned for Fairmount Park and race meets affiliated with intertrack outlets.

## HAWTHORNE RACE COURSE, INC. - HAWTHORNE RACE COURSE SEPTEMBER 8 - DECEMBER 31

	ON TRACK AT	INTER TRACK ON	OFF TRACK ON	ALL LOCATIONS ON
	HAWTHORNE	HAWTHORNE	HAWTHORNE	HAWTHORNE
<b>THOROUGHBRED MEET</b>				
Live Programs Raced	81	405	1,671	2,157
Total Live + Dark Days	91	0	0	91
Live Races Run	750	0	0	750
Attendance	184,287	141,034	N/A	325,321
Purse Distribution				12,419,361
Illinois Handle on Illinois Races	20,577,936	17,236,823	27,314,136	65,128,895
Illinois Handle on Out-of-State Races on Live Days	10,100,899	23,518,175	41,322,191	74,941,265
Combined Illinois Handle on Live Days	30,678,835	40,754,998	68,636,327	140,070,160
Illinois Handle on Out-of-State Races on Dark Days	824,408	3,491,669	6,832,043	11,148,120
<b>Combined Illinois Handle on Live + Dark Days</b>	<b>31,503,243</b>	<b>44,246,667</b>	<b>75,468,370</b>	<b>151,218,280</b>
Percentage of Total Combined Illinois Handle	20.83%	29.26%	49.91%	
Ill. Handle on Out-of-State Races on Live + Dark Days	10,925,307	27,009,844	48,154,234	86,089,385
Out-of-State Handle (Commingled) on Illinois Programs				95,566,435
Total Meet Handle on Live Days				235,636,595
Total Meet Handle on Live + Dark Days				246,784,715

Average Illinois Handle on Illinois Races	254,049	212,800	337,212	804,060
Avg. Ill. Handle on Out-of-State Races on Live Days	124,702	290,348	510,151	925,201
Average Combined Illinois Handle on Live Days	378,751	503,148	847,362	1,729,261
Avg. Ill. Handle on Out-of-State Races on Dark Days	82,441	349,167	683,204	1,114,812
<b>Avg. Combined Illinois Handle on Live + Dark Days</b>	<b>346,189</b>	<b>486,227</b>	<b>829,323</b>	<b>1,661,739</b>
Avg. Ill. Handle on OutofState Races on Live+Dark Days	120,058	296,811	529,167	946,037
Avg. Out-of-State Handle (Commingled) on Illinois Programs				1,179,833
Average Total Meet Handle on Live Days				2,909,094
Average Total Meet Handle on Live + Dark Days				2,711,920

Combined Illinois Handle	\$ 31,503,243	44,246,667	75,468,370	151,218,280
-Commission (Take Out)	\$ 6,248,529	8,848,640	15,109,351	30,206,521
Track Commission *	\$ 2,450,359	3,587,925	6,953,055	12,991,339
Purses Earned **	\$ 2,450,359	3,587,925	4,479,749	10,518,033
Out-of-State Simulcast Fee (3%)	\$ 327,759	810,295	1,444,627	2,582,682
Privilege Tax	\$ 1,020,052	862,495	1,477,236	3,359,783
Horse Racing Tax Allocation	\$ 0	0	754,684	754,684
Public Pool	\$ 25,254,714	35,398,027	60,359,019	121,011,759
-Breakage	\$ 195,573	237,546	387,876	820,995
Race Track Improvement Fund	\$ 97,787	118,773	193,938	410,498
Breakage to General Revenue	\$ 97,787	118,773	193,938	410,498
-Surcharge	\$ 0	529,130	1,483,416	2,012,546
Payout to Public	\$ 25,059,141	34,631,351	58,487,727	118,178,218
Privilege Tax	\$ 1,020,052	862,495	1,477,236	3,359,783
Breakage	\$ 195,573	237,546	387,876	820,995
Horse Racing Tax Allocation	\$ 0	0	754,684	754,684
License Fee	\$ 8,370	0	0	8,370
License Fee - Daily Handle	\$ 900	0	0	900
Admission Tax	\$ 10,754	9,692	0	20,446
Uncashed Tickets (1995)	\$ 172,838	242,753	414,046	829,637
<b>TOTAL REVENUE TO STATE</b>	<b>\$ 1,408,487</b>	<b>1,352,486</b>	<b>3,033,842</b>	<b>5,794,815</b>
<b>AVG. DAILY STATE REVENUE</b>	<b>\$ 17,389</b>	<b>16,697</b>	<b>37,455</b>	<b>71,541</b>

\* Included are commissions earned by intertrack and off-track outlets.

\*\* Included are purses earned for Fairmount Park and race meets affiliated with intertrack outlets.

## OGDEN-FAIRMOUNT, INC. - FAIRMOUNT PARK

### MARCH 29 - OCTOBER 5

	ON TRACK AT FAIRMOUNT	INTER TRACK ON FAIRMOUNT	OFF TRACK ON FAIRMOUNT	ALL LOCATIONS ON FAIRMOUNT
<b>THOROUGHBRED MEET</b>				
Live Programs Raced	126	629	2,705	3,460
Total Live + Dark Days	126	0	0	126
Live Races Run	1,212	0	0	1,212
Attendance	298,666	18,895	N/A	317,561
Purse Distribution				5,271,812
Illinois Handle on Illinois Races	15,774,939	3,844,894	9,132,757	28,752,590
Illinois Handle on Out-of-State Races on Live Days	1,464,664	0	1,003,016	2,467,680
Combined Illinois Handle on Live Days	17,239,603	3,844,894	10,135,773	31,220,270
Illinois Handle on Out-of-State Races on Dark Days	0	0	0	0
<b>Combined Illinois Handle on Live + Dark Days</b>	<b>17,239,603</b>	<b>3,844,894</b>	<b>10,135,773</b>	<b>31,220,270</b>
Percentage of Total Combined Illinois Handle	55.22%	12.32%	32.47%	
Ill. Handle on Out-of-State Races on Live + Dark Days	1,464,664	0	1,003,016	2,467,680
Out-of-State Handle (Commingled) on Illinois Programs				16,858,075
Total Meet Handle on Live Days				48,078,345
Total Meet Handle on Live + Dark Days				48,078,345
Average Illinois Handle on Illinois Races	125,198	30,515	72,482	228,195
Avg. Ill. Handle on Out-of-State Races on Live Days	11,624	0	7,960	19,585
Average Combined Illinois Handle on Live Days	136,822	30,515	80,443	247,780
Avg. Ill. Handle on Out-of-State Races on Dark Days	N/A	N/A	N/A	N/A
<b>Avg. Combined Illinois Handle on Live + Dark Days</b>	<b>136,822</b>	<b>30,515</b>	<b>80,443</b>	<b>247,780</b>
Avg. Ill. Handle on OutofState Races on Live+Dark Days	11,624	0	7,960	19,585
Avg. Out-of-State Handle (Commingled) on Illinois Programs				133,794
Average Total Meet Handle on Live Days				381,574
Average Total Meet Handle on Live + Dark Days				381,574
Combined Illinois Handle	\$ 17,239,603	3,844,894	10,135,773	31,220,270
-Commission (Take Out)	\$ 3,461,066	767,051	2,049,260	6,277,377
Track Commission *	\$ 1,548,774	349,185	1,275,552	3,173,511
Purses Earned **	\$ 1,548,774	349,185	451,166	2,349,125
Out-of-State Simulcast Fee (3%)	\$ 43,940	0	30,090	74,030
Privilege Tax	\$ 319,578	68,681	191,094	579,353
Horse Racing Tax Allocation	\$ 0	0	101,358	101,358
Public Pool	\$ 13,778,537	3,077,843	8,086,513	24,942,893
-Breakage	\$ 124,300	27,985	64,173	216,458
Race Track Improvement Fund	\$ 62,150	13,993	32,087	108,229
Breakage to General Revenue	\$ 62,150	13,993	32,087	108,229
-Surcharge	\$ 141,833	44,899	200,113	386,845
Payout to Public	\$ 13,512,404	3,004,959	7,822,227	24,339,590
Privilege Tax	\$ 319,578	68,681	191,094	579,353
Breakage	\$ 124,300	27,985	64,173	216,458
Horse Racing Tax Allocation	\$ 0	0	101,358	101,358
License Fee	\$ 14,750	0	0	14,750
License Fee - Daily Handle	\$ 0	0	0	0
Admission Tax	\$ 19,856	1,344	0	21,200
Uncashed Tickets (1995)	\$ 101,517	22,641	59,686	183,844
<b>TOTAL REVENUE TO STATE</b>	<b>\$ 580,001</b>	<b>120,651</b>	<b>416,311</b>	<b>1,116,963</b>
<b>AVG. DAILY STATE REVENUE</b>	<b>\$ 4,603</b>	<b>958</b>	<b>3,304</b>	<b>8,865</b>

\* Included are commissions earned by intertrack and off-track outlets.

\*\* Included are purses earned for Fairmount Park and race meets affiliated with intertrack outlets.



## SUBURBAN DOWNS, INC. - HAWTHORNE RACE COURSE

### JANUARY 1 - FEBRUARY 13

	ON TRACK AT HAWTHORNE	INTER TRACK ON HAWTHORNE	OFF TRACK ON HAWTHORNE	ALL LOCATIONS ON HAWTHORNE
<b>HARNESS MEET</b>				
Live Programs Raced	69	344	1,512	1,925
Total Live + Dark Days	69	0	0	69
Live Races Run	719	0	0	719
Attendance	116,345	102,384	N/A	218,729
Purse Distribution				5,429,665
Illinois Handle on Illinois Races	10,774,936	8,770,131	19,225,658	38,770,725
Illinois Handle on Out-of-State Races on Live Days	7,497,634	20,250,129	35,874,802	63,622,565
Combined Illinois Handle on Live Days	18,272,570	29,020,260	55,100,460	102,393,290
Illinois Handle on Out-of-State Races on Dark Days	0	0	0	0
<b>Combined Illinois Handle on Live + Dark Days</b>	<b>18,272,570</b>	<b>29,020,260</b>	<b>55,100,460</b>	<b>102,393,290</b>
Percentage of Total Combined Illinois Handle	17.85%	28.34%	53.81%	
Ill. Handle on Out-of-State Races on Live + Dark Days	7,497,634	20,250,129	35,874,802	63,622,565
Out-of-State Handle (Commingled) on Illinois Programs				22,185,315
Total Meet Handle on Live Days				124,578,605
Total Meet Handle on Live + Dark Days				124,578,605
Average Illinois Handle on Illinois Races	156,158	127,103	278,633	561,895
Avg. Ill. Handle on Out-of-State Races on Live Days	108,661	293,480	519,925	922,066
Average Combined Illinois Handle on Live Days	264,820	420,583	798,557	1,483,961
Avg. Ill. Handle on Out-of-State Races on Dark Days	N/A	N/A	N/A	N/A
<b>Avg. Combined Illinois Handle on Live + Dark Days</b>	<b>264,820</b>	<b>420,583</b>	<b>798,557</b>	<b>1,483,961</b>
Avg. Ill. Handle on OutofState Races on Live+Dark Days	108,661	293,480	519,925	922,066
Avg. Out-of-State Handle (Commingled) on Illinois Programs				321,526
Average Total Meet Handle on Live Days				1,805,487
Average Total Meet Handle on Live + Dark Days				1,805,487
Combined Illinois Handle	\$ 18,272,570	29,020,260	55,100,460	102,393,290
-Commission (Take Out)	\$ 3,634,396	5,847,515	11,101,602	20,583,513
Track Commission *	\$ 1,408,921	2,336,091	5,088,975	8,833,987
Purses Earned **	\$ 1,408,921	2,336,091	3,315,633	7,060,645
Out-of-State Simulcast Fee (3%)	\$ 224,929	607,504	1,076,244	1,908,677
Privilege Tax	\$ 591,625	567,829	1,069,745	2,229,199
Horse Racing Tax Allocation	\$ 0	0	551,005	551,005
Public Pool	\$ 14,638,174	23,172,745	43,998,858	81,809,777
-Breakage	\$ 112,943	162,943	282,620	558,506
Race Track Improvement Fund	\$ 56,472	81,472	141,310	279,253
Breakage to General Revenue	\$ 56,472	81,472	141,310	279,253
-Surcharge	\$ 0	347,796	1,085,239	1,433,035
Payout to Public	\$ 14,525,231	22,662,006	42,630,999	79,818,236
Privilege Tax	\$ 591,625	567,829	1,069,745	2,229,199
Breakage	\$ 112,943	162,943	282,620	558,506
Horse Racing Tax Allocation	\$ 0	0	551,005	551,005
License Fee	\$ 8,260	0	0	8,260
License Fee - Daily Handle	\$ 0	0	0	0
Admission Tax	\$ 6,378	6,896	0	13,274
Uncashed Tickets (1995)	\$ 33,389	53,028	100,684	187,101
<b>TOTAL REVENUE TO STATE</b>	<b>\$ 752,595</b>	<b>790,696</b>	<b>2,004,054</b>	<b>3,547,345</b>
<b>AVG. DAILY STATE REVENUE</b>	<b>\$ 10,907</b>	<b>11,459</b>	<b>29,044</b>	<b>51,411</b>

\* Included are commissions earned by intertrack and off-track outlets.

\*\* Included are purses earned for Fairmount Park and race meets affiliated with intertrack outlets.

## MAYWOOD PARK TROTTING ASSOCIATION, INC. - MAYWOOD PARK FEBRUARY 14 - MAY 10

	ON TRACK AT MAYWOOD	INTER TRACK ON MAYWOOD	OFF TRACK ON MAYWOOD	ALL LOCATIONS ON MAYWOOD
<b>HARNESS MEET</b>				
Live Programs Raced	61	305	1,341	1,707
Total Live + Dark Days	61	0	0	61
Live Races Run	587	0	0	587
Attendance	69,927	86,703	N/A	156,630
Purse Distribution				2,665,585
Illinois Handle on Illinois Races	5,301,139	5,860,003	12,332,052	23,493,194
Illinois Handle on Out-of-State Races on Live Days	949,932	2,508,021	5,184,991	8,642,944
Combined Illinois Handle on Live Days	6,251,071	8,368,024	17,517,043	32,136,138
Illinois Handle on Out-of-State Races on Dark Days	0	0	0	0
<b>Combined Illinois Handle on Live + Dark Days</b>	<b>6,251,071</b>	<b>8,368,024</b>	<b>17,517,043</b>	<b>32,136,138</b>
Percentage of Total Combined Illinois Handle	19.45%	26.04%	54.51%	
Ill. Handle on Out-of-State Races on Live + Dark Days	949,932	2,508,021	5,184,991	8,642,944
Out-of-State Handle (Commingle) on Illinois Programs				15,495,273
Total Meet Handle on Live Days				47,631,411
Total Meet Handle on Live + Dark Days				47,631,411
Average Illinois Handle on Illinois Races	86,904	96,066	202,165	385,134
Avg. Ill. Handle on Out-of-State Races on Live Days	15,573	41,115	85,000	141,688
Average Combined Illinois Handle on Live Days	102,477	137,181	287,165	526,822
Avg. Ill. Handle on Out-of-State Races on Dark Days	N/A	N/A	N/A	N/A
<b>Avg. Combined Illinois Handle on Live + Dark Days</b>	<b>102,477</b>	<b>137,181</b>	<b>287,165</b>	<b>526,822</b>
Avg. Ill. Handle on Out-of-State Races on Live+Dark Days	15,573	41,115	85,000	141,688
Avg. Out-of-State Handle (Commingle) on Illinois Programs				254,021
Average Total Meet Handle on Live Days				780,843
Average Total Meet Handle on Live + Dark Days				780,843
Combined Illinois Handle	\$ 6,251,071	8,368,024	17,517,043	32,136,138
-Commission (Take Out)	\$ 1,272,710	1,718,664	3,618,076	6,609,449
Track Commission *	\$ 516,815	739,098	2,040,476	3,296,389
Purses Earned **	\$ 516,815	739,098	894,986	2,150,899
Out-of-State Simulcast Fee (3%)	\$ 28,498	75,241	155,550	259,288
Privilege Tax	\$ 210,582	165,227	351,894	727,703
Horse Racing Tax Allocation	\$ 0	0	175,170	175,170
Public Pool	\$ 4,978,361	6,649,360	13,898,967	25,526,689
-Breakage	\$ 46,300	56,542	105,860	208,702
Race Track Improvement Fund	\$ 23,150	28,271	52,930	104,351
Breakage to General Revenue	\$ 23,150	28,271	52,930	104,351
-Surcharge	\$ 42,983	101,071	342,995	487,049
Payout to Public	\$ 4,889,078	6,491,747	13,450,112	24,830,938
Privilege Tax	\$ 210,582	165,227	351,894	727,703
Breakage	\$ 46,300	56,542	105,860	208,702
Horse Racing Tax Allocation	\$ 0	0	175,170	175,170
License Fee	\$ 11,340	0	0	11,340
License Fee - Daily Handle	\$ 0	0	0	0
Admission Tax	\$ 4,275	4,798	0	9,073
Uncashed Tickets (1995)	\$ 63,113	84,486	176,858	324,457
<b>TOTAL REVENUE TO STATE</b>	<b>\$ 335,610</b>	<b>311,053</b>	<b>809,782</b>	<b>1,456,445</b>
<b>AVG. DAILY STATE REVENUE</b>	<b>\$ 5,502</b>	<b>5,099</b>	<b>13,275</b>	<b>23,876</b>

\* Included are commissions earned by intertrack and off-track outlets.

\*\* Included are purses earned for Fairmount Park and race meets affiliated with intertrack outlets.

## ASSOCIATES RACING ASSOCIATION, INC. - MAYWOOD PARK

### OCTOBER 11 - NOVEMBER 19

	ON TRACK AT MAYWOOD	INTER TRACK ON MAYWOOD	OFF TRACK ON MAYWOOD	ALL LOCATIONS ON MAYWOOD
<b>HARNESS MEET</b>				
Live Programs Raced	28	140	588	756
Total Live + Dark Days	28	0	0	28
Live Races Run	276	0	0	276
Attendance	38,831	23,393	N/A	62,224
Purse Distribution				1,970,100
Illinois Handle on Illinois Races	2,986,152	2,662,442	5,598,534	11,247,128
Illinois Handle on Out-of-State Races on Live Days	472,267	1,111,696	2,704,783	4,288,746
Combined Illinois Handle on Live Days	3,458,419	3,774,138	8,303,317	15,535,874
Illinois Handle on Out-of-State Races on Dark Days	0	0	0	0
<b>Combined Illinois Handle on Live + Dark Days</b>	<b>3,458,419</b>	<b>3,774,138</b>	<b>8,303,317</b>	<b>15,535,874</b>
Percentage of Total Combined Illinois Handle	22.26%	24.29%	53.45%	
Ill. Handle on Out-of-State Races on Live + Dark Days	472,267	1,111,696	2,704,783	4,288,746
Out-of-State Handle (Commingled) on Illinois Programs				9,046,340
Total Meet Handle on Live Days				24,582,214
Total Meet Handle on Live + Dark Days				24,582,214
Average Illinois Handle on Illinois Races	106,648	95,087	199,948	401,683
Avg. Ill. Handle on Out-of-State Races on Live Days	16,867	39,703	96,599	153,170
Average Combined Illinois Handle on Live Days	123,515	134,791	296,547	554,853
Avg. Ill. Handle on Out-of-State Races on Dark Days	N/A	N/A	N/A	N/A
<b>Avg. Combined Illinois Handle on Live + Dark Days</b>	<b>123,515</b>	<b>134,791</b>	<b>296,547</b>	<b>554,853</b>
Avg. Ill. Handle on OutofState Races on Live+Dark Days	16,867	39,703	96,599	153,170
Avg. Out-of-State Handle (Commingled) on Illinois Programs				323,084
Average Total Meet Handle on Live Days				877,936
Average Total Meet Handle on Live + Dark Days				877,936
Combined Illinois Handle	\$ 3,458,419	3,774,138	8,303,317	15,535,874
-Commission (Take Out)	\$ 712,825	786,400	1,744,529	3,243,754
Track Commission *	\$ 289,426	338,087	968,543	1,596,056
Purses Earned **	\$ 289,426	338,087	438,599	1,066,112
Out-of-State Simulcast Fee (3%)	\$ 14,168	33,351	81,143	128,662
Privilege Tax	\$ 119,805	76,875	173,211	369,891
Horse Racing Tax Allocation	\$ 0	0	83,033	83,033
Public Pool	\$ 2,745,594	2,987,738	6,558,788	12,292,120
-Breakage	\$ 25,275	25,408	50,467	101,150
Race Track Improvement Fund	\$ 12,638	12,704	25,234	50,575
Breakage to General Revenue	\$ 12,638	12,704	25,234	50,575
-Surcharge	\$ 24,095	45,718	162,087	231,900
Payout to Public	\$ 2,696,224	2,916,612	6,346,234	11,959,070
Privilege Tax	\$ 119,805	76,875	173,211	369,891
Breakage	\$ 25,275	25,408	50,467	101,150
Horse Racing Tax Allocation	\$ 0	0	83,033	83,033
License Fee	\$ 3,530	0	0	3,530
License Fee - Daily Handle	\$ 0	0	0	0
Admission Tax	\$ 2,072	1,461	0	3,533
Uncashed Tickets (1995)	\$ 47,225	51,536	113,383	212,144
<b>TOTAL REVENUE TO STATE</b>	<b>\$ 197,907</b>	<b>155,280</b>	<b>420,094</b>	<b>773,281</b>
<b>AVG. DAILY STATE REVENUE</b>	<b>\$ 7,068</b>	<b>5,546</b>	<b>15,003</b>	<b>27,617</b>

\* Included are commissions earned by intertrack and off-track outlets.

\*\* Included are purses earned for Fairmount Park and race meets affiliated with intertrack outlets.

## EGYPTIAN TROTTING ASSOCIATION, INC. - MAYWOOD PARK

### NOVEMBER 20 - DECEMBER 31

	ON TRACK AT <b>MAYWOOD</b>	INTER TRACK ON <b>MAYWOOD</b>	OFF TRACK ON <b>MAYWOOD</b>	ALL LOCATIONS ON <b>MAYWOOD</b>
<b>HARNESS MEET</b>				
Live Programs Raced	27	135	545	707
Total Live + Dark Days	27	0	0	27
Live Races Run	268	0	0	268
Attendance	32,955	27,434	N/A	60,389
Purse Distribution				1,389,900
Illinois Handle on Illinois Races	2,700,607	2,737,360	5,771,342	11,209,309
Illinois Handle on Out-of-State Races on Live Days	447,036	976,205	2,278,383	3,701,624
Combined Illinois Handle on Live Days	3,147,643	3,713,565	8,049,725	14,910,933
Illinois Handle on Out-of-State Races on Dark Days	0	0	0	0
<b>Combined Illinois Handle on Live + Dark Days</b>	<b>3,147,643</b>	<b>3,713,565</b>	<b>8,049,725</b>	<b>14,910,933</b>
Percentage of Total Combined Illinois Handle	21.11%	24.90%	53.99%	
Ill. Handle on Out-of-State Races on Live + Dark Days	447,036	976,205	2,278,383	3,701,624
Out-of-State Handle (Commingled) on Illinois Programs				11,482,499
Total Meet Handle on Live Days				26,393,432
Total Meet Handle on Live + Dark Days				26,393,432
Average Illinois Handle on Illinois Races	100,022	101,384	213,753	415,160
Avg. Ill. Handle on Out-of-State Races on Live Days	16,557	36,156	84,385	137,097
Average Combined Illinois Handle on Live Days	116,579	137,539	298,138	552,257
Avg. Ill. Handle on Out-of-State Races on Dark Days	N/A	N/A	N/A	N/A
<b>Avg. Combined Illinois Handle on Live + Dark Days</b>	<b>116,579</b>	<b>137,539</b>	<b>298,138</b>	<b>552,257</b>
Avg. Ill. Handle on OutofState Races on Live+Dark Days	16,557	36,156	84,385	137,097
Avg. Out-of-State Handle (Commingled) on Illinois Programs				425,278
Average Total Meet Handle on Live Days				977,535
Average Total Meet Handle on Live + Dark Days				977,535
Combined Illinois Handle	\$ 3,147,643	3,713,565	8,049,725	14,910,933
-Commission (Take Out)	\$ 656,485	781,633	1,713,607	3,151,726
Track Commission *	\$ 266,028	337,965	971,545	1,575,538
Purses Earned **	\$ 266,028	337,965	422,613	1,026,606
Out-of-State Simulcast Fee (3%)	\$ 13,411	29,286	68,351	111,049
Privilege Tax	\$ 111,018	76,417	170,601	358,036
Horse Racing Tax Allocation	\$ 0	0	80,497	80,497
Public Pool	\$ 2,491,158	2,931,932	6,336,118	11,759,207
-Breakage	\$ 23,520	26,114	48,961	98,595
Race Track Improvement Fund	\$ 11,760	13,057	24,481	49,298
Breakage to General Revenue	\$ 11,760	13,057	24,481	49,298
-Surcharge	\$ 21,956	44,601	157,715	224,272
Payout to Public	\$ 2,445,682	2,861,217	6,129,442	11,436,340
Privilege Tax	\$ 111,018	76,417	170,601	358,036
Breakage	\$ 23,520	26,114	48,961	98,595
Horse Racing Tax Allocation	\$ 0	0	80,497	80,497
License Fee	\$ 3,530	0	0	3,530
License Fee - Daily Handle	\$ 0	0	0	0
Admission Tax	\$ 1,804	1,392	0	3,196
Uncashed Tickets (1995)	\$ 41,926	49,464	107,220	198,609
<b>TOTAL REVENUE TO STATE</b>	<b>\$ 181,798</b>	<b>153,387</b>	<b>407,279</b>	<b>742,463</b>
<b>AVG. DAILY STATE REVENUE</b>	<b>\$ 6,733</b>	<b>5,681</b>	<b>15,084</b>	<b>27,499</b>

\* Included are commissions earned by intertrack and off-track outlets.

\*\* Included are purses earned for Fairmount Park and race meets affiliated with intertrack outlets.



**1997 MAYWOOD PARK HARNESS COMBINED  
FEBRUARY 14 - MAY 10, OCTOBER 11 - DECEMBER 31**

	ON TRACK AT <b>MAYWOOD</b>	INTER TRACK ON <b>MAYWOOD</b>	OFF TRACK ON <b>MAYWOOD</b>	ALL LOCATIONS ON <b>MAYWOOD</b>
<b>HARNESS MEET</b>				
Live Programs Raced	116	580	2,474	3,170
Total Live + Dark Days	116	0	0	116
Live Races Run	1,131	0	0	1,131
Attendance	141,713	137,530	N/A	279,243
Purse Distribution				6,025,585
Illinois Handle on Illinois Races	10,987,898	11,259,805	23,701,928	45,949,631
Illinois Handle on Out-of-State Races on Live Days	1,869,235	4,595,922	10,168,157	16,633,314
Combined Illinois Handle on Live Days	12,857,133	15,855,727	33,870,085	62,582,945
Illinois Handle on Out-of-State Races on Dark Days	0	0	0	0
<b>Combined Illinois Handle on Live + Dark Days</b>	<b>12,857,133</b>	<b>15,855,727</b>	<b>33,870,085</b>	<b>62,582,945</b>
Percentage of Total Combined Illinois Handle	20.54%	25.34%	54.12%	
Ill. Handle on Out-of-State Races on Live + Dark Days	1,869,235	4,595,922	10,168,157	16,633,314
Out-of-State Handle (Commingle) on Illinois Programs				36,024,112
Total Meet Handle on Live Days				98,607,057
Total Meet Handle on Live + Dark Days				98,607,057
Average Illinois Handle on Illinois Races	94,723	97,067	204,327	396,118
Avg. Ill. Handle on Out-of-State Races on Live Days	16,114	39,620	87,657	143,391
Average Combined Illinois Handle on Live Days	110,837	136,687	291,983	539,508
Avg. Ill. Handle on Out-of-State Races on Dark Days	N/A	N/A	N/A	N/A
<b>Avg. Combined Illinois Handle on Live + Dark Days</b>	<b>110,837</b>	<b>136,687</b>	<b>291,983</b>	<b>539,508</b>
Avg. Ill. Handle on Out-of-State Races on Live+Dark Days	16,114	39,620	87,657	143,391
Avg. Out-of-State Handle (Commingle) on Illinois Programs				310,553
Average Total Meet Handle on Live Days				850,061
Average Total Meet Handle on Live + Dark Days				850,061
Combined Illinois Handle	\$ 12,857,133	15,855,727	33,870,085	62,582,945
-Commission (Take Out)	\$ 2,642,020	3,286,697	7,076,213	13,004,929
Track Commission *	\$ 1,072,269	1,415,150	3,980,564	6,467,983
Purses Earned **	\$ 1,072,269	1,415,150	1,756,198	4,243,617
Out-of-State Simulcast Fee (3%)	\$ 56,077	137,878	305,045	498,999
Privilege Tax	\$ 441,405	318,519	695,706	1,455,630
Horse Racing Tax Allocation	\$ 0	0	338,700	338,700
Public Pool	\$ 10,215,113	12,569,030	26,793,872	49,578,016
-Breakage	\$ 95,095	108,064	205,288	408,447
Race Track Improvement Fund	\$ 47,548	54,032	102,644	204,224
Breakage to General Revenue	\$ 47,548	54,032	102,644	204,224
-Surcharge	\$ 89,034	191,390	662,797	943,221
Payout to Public	\$ 10,030,984	12,269,576	25,925,787	48,226,348
Privilege Tax	\$ 441,405	318,519	695,706	1,455,630
Breakage	\$ 95,095	108,064	205,288	408,447
Horse Racing Tax Allocation	\$ 0	0	338,700	338,700
License Fee	\$ 18,400	0	0	18,400
License Fee - Daily Handle	\$ 0	0	0	0
Admission Tax	\$ 8,151	7,651	0	15,802
Uncashed Tickets (1995)	\$ 152,264	185,486	397,460	735,210
<b>TOTAL REVENUE TO STATE</b>	<b>\$ 715,315</b>	<b>619,720</b>	<b>1,637,154</b>	<b>2,972,189</b>
<b>AVG. DAILY STATE REVENUE</b>	<b>\$ 6,167</b>	<b>5,342</b>	<b>14,113</b>	<b>25,622</b>

\* Included are commissions earned by intertrack and off-track outlets.

\*\* Included are purses earned for Fairmount Park and race meets affiliated with intertrack outlets.

## CHICAGO DOWNS ASSOCIATION, INC. - SPORTSMAN'S PARK

### MAY 11 - AUGUST 11

	ON TRACK AT	INTER TRACK ON	OFF TRACK ON	ALL LOCATIONS ON
	SPORTSMANS	SPORTSMANS	SPORTSMANS	SPORTSMANS
<b>HARNESS MEET</b>				
Live Programs Raced	75	375	1,613	2,063
Total Live + Dark Days	75	0	0	75
Live Races Run	716	0	0	716
Attendance	147,050	90,466	N/A	237,516
Purse Distribution				6,220,850
Illinois Handle on Illinois Races	12,005,349	8,489,891	18,503,535	38,998,775
Illinois Handle on Out-of-State Races on Live Days	6,425,849	14,913,245	28,973,051	50,312,145
Combined Illinois Handle on Live Days	18,431,198	23,403,136	47,476,586	89,310,920
Illinois Handle on Out-of-State Races on Dark Days	0	0	0	0
<b>Combined Illinois Handle on Live + Dark Days</b>	<b>18,431,198</b>	<b>23,403,136</b>	<b>47,476,586</b>	<b>89,310,920</b>
Percentage of Total Combined Illinois Handle	20.64%	26.20%	53.16%	
Ill. Handle on Out-of-State Races on Live + Dark Days	6,425,849	14,913,245	28,973,051	50,312,145
Out-of-State Handle (Commingled) on Illinois Programs				25,933,569
Total Meet Handle on Live Days				115,244,489
Total Meet Handle on Live + Dark Days				115,244,489
Average Illinois Handle on Illinois Races	160,071	113,199	246,714	519,984
Avg. Ill. Handle on Out-of-State Races on Live Days	85,678	198,843	386,307	670,829
Average Combined Illinois Handle on Live Days	245,749	312,042	633,021	1,190,812
Avg. Ill. Handle on Out-of-State Races on Dark Days	N/A	N/A	N/A	N/A
<b>Avg. Combined Illinois Handle on Live + Dark Days</b>	<b>245,749</b>	<b>312,042</b>	<b>633,021</b>	<b>1,190,812</b>
Avg. Ill. Handle on OutofState Races on Live+Dark Days	85,678	198,843	386,307	670,829
Avg. Out-of-State Handle (Commingled) on Illinois Programs				345,781
Average Total Meet Handle on Live Days				1,536,593
Average Total Meet Handle on Live + Dark Days				1,536,593
Combined Illinois Handle	\$ 18,431,198	23,403,136	47,476,586	89,310,920
-Commission (Take Out)	\$ 3,743,540	4,826,984	9,869,497	18,440,021
Track Commission *	\$ 1,467,058	1,954,343	4,651,134	8,072,535
Purses Earned **	\$ 1,467,058	1,954,343	2,900,683	6,322,084
Out-of-State Simulcast Fee (3%)	\$ 192,775	447,397	869,192	1,509,364
Privilege Tax	\$ 616,649	470,901	973,722	2,061,272
Horse Racing Tax Allocation	\$ 0	0	474,766	474,766
Public Pool	\$ 14,687,658	18,576,152	37,607,089	70,870,899
-Breakage	\$ 115,453	140,412	252,772	508,637
Race Track Improvement Fund	\$ 57,727	70,206	126,386	254,319
Breakage to General Revenue	\$ 57,727	70,206	126,386	254,319
-Surcharge	\$ 95,633	279,611	932,202	1,307,446
Payout to Public	\$ 14,476,572	18,156,129	36,422,115	69,054,816
Privilege Tax	\$ 616,649	470,901	973,722	2,061,272
Breakage	\$ 115,453	140,412	252,772	508,637
Horse Racing Tax Allocation	\$ 0	0	474,766	474,766
License Fee	\$ 9,250	0	0	9,250
License Fee - Daily Handle	\$ 0	0	0	0
Admission Tax	\$ 11,015	4,678	0	15,693
Uncashed Tickets (1995)	\$ 55,904	70,985	144,003	270,892
<b>TOTAL REVENUE TO STATE</b>	<b>\$ 808,271</b>	<b>686,976</b>	<b>1,845,263</b>	<b>3,340,510</b>
<b>AVG. DAILY STATE REVENUE</b>	<b>\$ 10,777</b>	<b>9,160</b>	<b>24,604</b>	<b>44,540</b>

\* Included are commissions earned by intertrack and off-track outlets.

\*\* Included are purses earned for Fairmount Park and race meets affiliated with intertrack outlets.

## FOX VALLEY TROTTING CLUB, INC. - SPORTSMAN'S PARK

### AUGUST 12 - OCTOBER 10

	ON TRACK AT SPORTSMANS	INTER TRACK ON SPORTSMANS	OFF TRACK ON SPORTSMANS	ALL LOCATIONS ON SPORTSMANS
<b>HARNESS MEET</b>				
Live Programs Raced	51	265	1,071	1,387
Total Live + Dark Days	51	0	0	51
Live Races Run	503	0	0	503
Attendance	97,374	55,705	N/A	153,079
Purse Distribution				5,538,310
Illinois Handle on Illinois Races	8,234,160	6,194,006	12,991,997	27,420,163
Illinois Handle on Out-of-State Races on Live Days	<u>3,496,658</u>	<u>9,346,649</u>	<u>17,853,811</u>	<u>30,697,118</u>
Combined Illinois Handle on Live Days	11,730,818	15,540,655	30,845,808	58,117,281
Illinois Handle on Out-of-State Races on Dark Days	0	0	0	0
<b>Combined Illinois Handle on Live + Dark Days</b>	<b>11,730,818</b>	<b>15,540,655</b>	<b>30,845,808</b>	<b>58,117,281</b>
Percentage of Total Combined Illinois Handle	20.18%	26.74%	53.08%	
Ill. Handle on Out-of-State Races on Live + Dark Days	3,496,658	9,346,649	17,853,811	30,697,118
Out-of-State Handle (Commingled) on Illinois Programs				21,978,094
Total Meet Handle on Live Days				80,095,375
Total Meet Handle on Live + Dark Days				80,095,375
Average Illinois Handle on Illinois Races	161,454	121,451	254,745	537,650
Avg. Ill. Handle on Out-of-State Races on Live Days	<u>68,562</u>	<u>183,268</u>	<u>350,075</u>	<u>601,904</u>
Average Combined Illinois Handle on Live Days	230,016	304,719	604,820	1,139,555
Avg. Ill. Handle on Out-of-State Races on Dark Days	N/A	N/A	N/A	N/A
<b>Avg. Combined Illinois Handle on Live + Dark Days</b>	<b>230,016</b>	<b>304,719</b>	<b>604,820</b>	<b>1,139,555</b>
Avg. Ill. Handle on OutofState Races on Live+Dark Days	68,562	183,268	350,075	601,904
Avg. Out-of-State Handle (Commingled) on Illinois Programs				430,943
Average Total Meet Handle on Live Days				1,570,498
Average Total Meet Handle on Live + Dark Days				1,570,498
Combined Illinois Handle	\$ 11,730,818	15,540,655	30,845,808	58,117,281
-Commission (Take Out)	\$ 2,380,335	3,182,779	6,376,058	11,939,173
Track Commission *	\$ 940,794	1,296,289	3,064,580	5,301,663
Purses Earned **	\$ 940,794	1,296,289	1,836,394	4,073,477
Out-of-State Simulcast Fee (3%)	\$ 104,900	280,399	535,614	920,914
Privilege Tax	\$ 393,847	309,802	631,012	1,334,661
Horse Racing Tax Allocation	\$ 0	0	308,458	308,458
Public Pool	\$ 9,350,483	12,357,876	24,469,750	46,178,108
-Breakage	\$ 77,336	96,500	168,485	342,321
Race Track Improvement Fund	\$ 38,668	48,250	84,243	171,161
Breakage to General Revenue	\$ 38,668	48,250	84,243	171,161
-Surcharge	\$ 65,963	187,309	605,450	858,722
Payout to Public	\$ 9,207,184	12,074,067	23,695,815	44,977,065
Privilege Tax	\$ 393,847	309,802	631,012	1,334,661
Breakage	\$ 77,336	96,500	168,485	342,321
Horse Racing Tax Allocation	\$ 0	0	308,458	308,458
License Fee	\$ 6,610	0	0	6,610
License Fee - Daily Handle	\$ 200	0	0	200
Admission Tax	\$ 6,572	3,041	0	9,613
Uncashed Tickets (1995)	\$ 35,876	47,527	94,335	177,738
<b>TOTAL REVENUE TO STATE</b>	<b>\$ <u>520,441</u></b>	<b><u>456,870</u></b>	<b><u>1,202,290</u></b>	<b><u>2,179,601</u></b>
<b>AVG. DAILY STATE REVENUE</b>	<b>\$ <u>10,205</u></b>	<b><u>8,958</u></b>	<b><u>23,574</u></b>	<b><u>42,737</u></b>

\* Included are commissions earned by intertrack and off-track outlets.

\*\* Included are purses earned for Fairmount Park and race meets affiliated with intertrack outlets.

## 1997 SPORTSMAN'S PARK HARNESS COMBINED MAY 11 - OCTOBER 10

	ON TRACK AT SPORTSMANS	INTER TRACK ON SPORTSMANS	OFF TRACK ON SPORTSMANS	ALL LOCATIONS ON SPORTSMANS
<b>HARNESS MEET</b>				
Live Programs Raced	126	640	2,684	3,450
Total Live + Dark Days	126	0	0	126
Live Races Run	1,219	0	0	1,219
Attendance	244,424	146,171	N/A	390,595
Purse Distribution				11,759,160
Illinois Handle on Illinois Races	20,239,509	14,683,897	31,495,532	66,418,938
Illinois Handle on Out-of-State Races on Live Days	<u>9,922,507</u>	<u>24,259,894</u>	<u>46,826,862</u>	<u>81,009,263</u>
Combined Illinois Handle on Live Days	30,162,016	38,943,791	78,322,394	147,428,201
Illinois Handle on Out-of-State Races on Dark Days	0	0	0	0
<b>Combined Illinois Handle on Live + Dark Days</b>	<b>30,162,016</b>	<b>38,943,791</b>	<b>78,322,394</b>	<b>147,428,201</b>
Percentage of Total Combined Illinois Handle	20.46%	26.42%	53.13%	
Ill. Handle on Out-of-State Races on Live + Dark Days	9,922,507	24,259,894	46,826,862	81,009,263
Out-of-State Handle (Commingled) on Illinois Programs				47,911,663
Total Meet Handle on Live Days				195,339,864
Total Meet Handle on Live + Dark Days				195,339,864
Average Illinois Handle on Illinois Races	160,631	116,539	249,965	527,134
Avg. Ill. Handle on Out-of-State Races on Live Days	<u>78,750</u>	<u>192,539</u>	<u>371,642</u>	<u>642,931</u>
Average Combined Illinois Handle on Live Days	239,381	309,078	621,606	1,170,065
Avg. Ill. Handle on Out-of-State Races on Dark Days	N/A	N/A	N/A	N/A
<b>Avg. Combined Illinois Handle on Live + Dark Days</b>	<b>239,381</b>	<b>309,078</b>	<b>621,606</b>	<b>1,170,065</b>
Avg. Ill. Handle on OutofState Races on Live+Dark Days	78,750	192,539	371,642	642,931
Avg. Out-of-State Handle (Commingled) on Illinois Programs				380,251
Average Total Meet Handle on Live Days				1,550,316
Average Total Meet Handle on Live + Dark Days				1,550,316
Combined Illinois Handle	\$ 30,162,016	38,943,791	78,322,394	147,428,201
-Commission (Take Out)	\$ 6,123,875	8,009,764	16,245,555	30,379,194
Track Commission *	\$ 2,407,852	3,250,632	7,715,714	13,374,198
Purses Earned **	\$ 2,407,852	3,250,632	4,737,077	10,395,561
Out-of-State Simulcast Fee (3%)	\$ 297,675	727,797	1,404,806	2,430,278
Privilege Tax	\$ 1,010,496	780,703	1,604,734	3,395,933
Horse Racing Tax Allocation	\$ 0	0	783,224	783,224
Public Pool	\$ 24,038,141	30,934,027	62,076,839	117,049,007
-Breakage	\$ 192,789	236,912	421,257	850,958
Race Track Improvement Fund	\$ 96,395	118,456	210,629	425,479
Breakage to General Revenue	\$ 96,395	118,456	210,629	425,479
-Surcharge	\$ 161,596	466,920	1,537,652	2,166,168
Payout to Public	\$ 23,683,756	30,230,195	60,117,930	114,031,881
Privilege Tax	\$ 1,010,496	780,703	1,604,734	3,395,933
Breakage	\$ 192,789	236,912	421,257	850,958
Horse Racing Tax Allocation	\$ 0	0	783,224	783,224
License Fee	\$ 15,860	0	0	15,860
License Fee - Daily Handle	\$ 200	0	0	200
Admission Tax	\$ 17,587	7,719	0	25,306
Uncashed Tickets (1995)	\$ 91,780	118,512	238,337	448,630
<b>TOTAL REVENUE TO STATE</b>	<b>\$ <u>1,328,712</u></b>	<b><u>1,143,846</u></b>	<b><u>3,047,552</u></b>	<b><u>5,520,111</u></b>
<b>AVG. DAILY STATE REVENUE</b>	<b>\$ <u>10,545</u></b>	<b><u>9,078</u></b>	<b><u>24,187</u></b>	<b><u>43,810</u></b>

\* Included are commissions earned by intertrack and off-track outlets.

\*\* Included are purses earned for Fairmount Park and race meets affiliated with intertrack outlets.



**BALMORAL RACING CLUB, INC. - BALMORAL PARK**  
**JANUARY 1 - DECEMBER 31**

	ON TRACK AT BALMORAL	INTER TRACK ON BALMORAL	OFF TRACK ON BALMORAL	ALL LOCATIONS ON BALMORAL
<b>HARNESS MEET</b>				
Live Programs Raced	179	895	3,828	4,902
Total Live + Dark Days	179	0	0	179
Live Races Run	1,879	0	0	1,879
Attendance	202,037	113,377	N/A	315,414
Purse Distribution				8,464,275
Illinois Handle on Illinois Races	14,666,274	25,290,840	40,651,631	80,608,745
Illinois Handle on Out-of-State Races on Live Days	3,240,109	30,809,802	49,508,841	83,558,752
Combined Illinois Handle on Live Days	17,906,383	56,100,642	90,160,472	164,167,497
Illinois Handle on Out-of-State Races on Dark Days	0	0	0	0
<b>Combined Illinois Handle on Live + Dark Days</b>	<b>17,906,383</b>	<b>56,100,642</b>	<b>90,160,472</b>	<b>164,167,497</b>
Percentage of Total Combined Illinois Handle	10.91%	34.17%	54.92%	
Ill. Handle on Out-of-State Races on Live + Dark Days	3,240,109	30,809,802	49,508,841	83,558,752
Out-of-State Handle (Commingled) on Illinois Programs				57,887,497
Total Meet Handle on Live Days				222,054,994
Total Meet Handle on Live + Dark Days				222,054,994
Average Illinois Handle on Illinois Races	81,934	141,290	227,104	450,328
Avg. Ill. Handle on Out-of-State Races on Live Days	18,101	172,122	276,586	466,809
Average Combined Illinois Handle on Live Days	100,036	313,411	503,690	917,137
Avg. Ill. Handle on Out-of-State Races on Dark Days	N/A	N/A	N/A	N/A
<b>Avg. Combined Illinois Handle on Live + Dark Days</b>	<b>100,036</b>	<b>313,411</b>	<b>503,690</b>	<b>917,137</b>
Avg. Ill. Handle on OutofState Races on Live+Dark Days	18,101	172,122	276,586	466,809
Avg. Out-of-State Handle (Commingled) on Illinois Programs				323,394
Average Total Meet Handle on Live Days				1,240,531
Average Total Meet Handle on Live + Dark Days				1,240,531
Combined Illinois Handle	\$ 17,906,383	\$ 56,100,642	\$ 90,160,472	\$ 164,167,497
-Commission (Take Out)	\$ 3,677,030	\$ 11,443,273	\$ 18,597,567	\$ 33,717,871
Track Commission *	\$ 1,610,082	\$ 4,705,724	\$ 9,090,701	\$ 15,406,507
Purses Earned **	\$ 1,610,082	\$ 4,705,724	\$ 5,280,763	\$ 11,596,569
Out-of-State Simulcast Fee (3%)	\$ 97,203	\$ 924,294	\$ 1,485,265	\$ 2,506,763
Privilege Tax	\$ 359,663	\$ 1,107,531	\$ 1,839,233	\$ 3,306,427
Horse Racing Tax Allocation	\$ 0	\$ 0	\$ 901,605	\$ 901,605
Public Pool	\$ 14,229,353	\$ 44,657,369	\$ 71,562,905	\$ 130,449,626
-Breakage	\$ 114,411	\$ 341,777	\$ 480,646	\$ 936,834
Race Track Improvement Fund	\$ 57,206	\$ 170,889	\$ 240,323	\$ 468,417
Breakage to General Revenue	\$ 57,206	\$ 170,889	\$ 240,323	\$ 468,417
-Surcharge	\$ 123,326	\$ 664,444	\$ 1,758,693	\$ 2,546,463
Payout to Public	\$ 13,991,616	\$ 43,651,148	\$ 69,323,566	\$ 126,966,329
Privilege Tax	\$ 359,663	\$ 1,107,531	\$ 1,839,233	\$ 3,306,427
Breakage	\$ 114,411	\$ 341,777	\$ 480,646	\$ 936,834
Horse Racing Tax Allocation	\$ 0	\$ 0	\$ 901,605	\$ 901,605
License Fee	\$ 21,790	\$ 0	\$ 0	\$ 21,790
License Fee - Daily Handle	\$ 0	\$ 0	\$ 0	\$ 0
Admission Tax	\$ 1,007	\$ 5,197	\$ 0	\$ 6,204
Uncashed Tickets (1995)	\$ 55,921	\$ 175,201	\$ 281,569	\$ 512,691
<b>TOTAL REVENUE TO STATE</b>	<b>\$ 552,792</b>	<b>\$ 1,629,706</b>	<b>\$ 3,503,053</b>	<b>\$ 5,685,551</b>
<b>AVG. DAILY STATE REVENUE</b>	<b>\$ 3,088</b>	<b>\$ 9,105</b>	<b>\$ 19,570</b>	<b>\$ 31,763</b>

\* Included are commissions earned by intertrack and off-track outlets.

\*\* Included are purses earned for Fairmount Park and race meets affiliated with intertrack outlets.

**OGDEN-FAIRMOUNT, INC. - FAIRMOUNT PARK**  
**JANUARY 3 - MARCH 16, OCTOBER 10 - DECEMBER 31**

	ON TRACK AT FAIRMOUNT	INTER TRACK ON FAIRMOUNT	OFF TRACK ON FAIRMOUNT	ALL LOCATIONS ON FAIRMOUNT
<b>HARNESS MEET</b>				
Live Programs Raced	107	535	2,273	2,915
Total Live + Dark Days	107	0	0	107
Live Races Run	1,194	0	0	1,194
Attendance	137,940	4,355	N/A	142,295
Purse Distribution				2,992,930
<b>Illinois Handle on Illinois Races</b>	<b>7,503,822</b>	<b>4,083,282</b>	<b>9,200,574</b>	<b>20,787,678</b>
<b>Illinois Handle on Out-of-State Races on Live Days</b>	<b>998,051</b>	<b>0</b>	<b>797,678</b>	<b>1,795,729</b>
<b>Combined Illinois Handle on Live Days</b>	<b>8,501,873</b>	<b>4,083,282</b>	<b>9,998,252</b>	<b>22,583,407</b>
Illinois Handle on Out-of-State Races on Dark Days	0	0	0	0
<b>Combined Illinois Handle on Live + Dark Days</b>	<b>8,501,873</b>	<b>4,083,282</b>	<b>9,998,252</b>	<b>22,583,407</b>
Percentage of Total Combined Illinois Handle	37.65%	18.08%	44.27%	
Ill. Handle on Out-of-State Races on Live + Dark Days	998,051	0	797,678	1,795,729
Out-of-State Handle (Commingled) on Illinois Programs				9,080,967
Total Meet Handle on Live Days				31,664,374
Total Meet Handle on Live + Dark Days				31,664,374
<b>Average Illinois Handle on Illinois Races</b>	<b>70,129</b>	<b>38,162</b>	<b>85,987</b>	<b>194,277</b>
<b>Avg. Ill. Handle on Out-of-State Races on Live Days</b>	<b>9,328</b>	<b>0</b>	<b>7,455</b>	<b>16,783</b>
<b>Average Combined Illinois Handle on Live Days</b>	<b>79,457</b>	<b>38,162</b>	<b>93,442</b>	<b>211,060</b>
Avg. Ill. Handle on Out-of-State Races on Dark Days	N/A	N/A	N/A	N/A
<b>Avg. Combined Illinois Handle on Live + Dark Days</b>	<b>79,457</b>	<b>38,162</b>	<b>93,442</b>	<b>211,060</b>
Avg. Ill. Handle on OutofState Races on Live+Dark Days	9,328	0	7,455	16,783
Avg. Out-of-State Handle (Commingled) on Illinois Programs				84,869
Average Total Meet Handle on Live Days				295,929
Average Total Meet Handle on Live + Dark Days				295,929
Combined Illinois Handle	\$ 8,501,873	4,083,282	9,998,252	22,583,407
-Commission (Take Out)	\$ 1,786,176	845,305	2,090,316	4,721,797
Track Commission *	\$ 786,229	381,055	1,313,807	2,481,091
Purses Earned **	\$ 786,229	381,055	441,302	1,608,586
Out-of-State Simulcast Fee (3%)	\$ 29,942	0	23,930	53,872
Privilege Tax	\$ 183,776	83,195	211,295	478,266
Horse Racing Tax Allocation	\$ 0	0	99,982	99,982
Public Pool	\$ 6,715,697	3,237,977	7,907,936	17,861,610
-Breakage	\$ 50,889	26,455	56,985	134,329
Race Track Improvement Fund	\$ 25,445	13,228	28,493	67,165
Breakage to General Revenue	\$ 25,445	13,228	28,493	67,165
-Surcharge	\$ 72,849	48,984	196,750	318,583
Payout to Public	\$ 6,591,959	3,162,538	7,654,201	17,408,698
Privilege Tax	\$ 183,776	83,195	211,295	478,266
Breakage	\$ 50,889	26,455	56,985	134,329
Horse Racing Tax Allocation	\$ 0	0	99,982	99,982
License Fee	\$ 12,550	0	0	12,550
License Fee - Daily Handle	\$ 0	0	0	0
Admission Tax	\$ 8,553	227	0	8,780
Uncashed Tickets (1995)	\$ 43,607	20,943	51,282	115,832
<b>TOTAL REVENUE TO STATE</b>	<b>\$ 299,375</b>	<b>130,820</b>	<b>419,544</b>	<b>849,739</b>
<b>AVG. DAILY STATE REVENUE</b>	<b>\$ 2,798</b>	<b>1,223</b>	<b>3,921</b>	<b>7,941</b>

\* Included are commissions earned by intertrack and off-track outlets.

\*\* Included are purses earned for Fairmount Park and race meets affiliated with intertrack outlets.



## ILLINOIS STATE FAIR - SPRINGFIELD AUGUST 8, 12-14

	ON TRACK AT SPRINGFIELD	INTER TRACK ON SPRINGFIELD	OFF TRACK ON SPRINGFIELD	ALL LOCATIONS ON SPRINGFIELD
<b>HARNESS MEET</b>				
Live Programs Raced	5	30	105	140
Total Live + Dark Days	5	0	0	5
Live Races Run	62	0	0	62
Attendance	N/A	N/A	N/A	N/A
Purse Distribution				1,118,000
Illinois Handle on Illinois Races	501,385	203,628	350,389	1,055,402
Illinois Handle on Out-of-State Races on Live Days	0	0	0	0
Combined Illinois Handle on Live Days	501,385	203,628	350,389	1,055,402
Illinois Handle on Out-of-State Races on Dark Days	0	0	0	0
<b>Combined Illinois Handle on Live + Dark Days</b>	<b>501,385</b>	<b>203,628</b>	<b>350,389</b>	<b>1,055,402</b>
Percentage of Total Combined Illinois Handle	47.51%	19.29%	33.20%	
Ill. Handle on Out-of-State Races on Live + Dark Days	0	0	0	0
Out-of-State Handle (Commingled) on Illinois Programs				65,039
Total Meet Handle on Live Days				1,120,441
Total Meet Handle on Live + Dark Days				1,120,441
Average Illinois Handle on Illinois Races	100,277	40,726	70,078	211,080
Avg. Ill. Handle on Out-of-State Races on Live Days	0	0	0	0
Average Combined Illinois Handle on Live Days	100,277	40,726	70,078	211,080
Avg. Ill. Handle on Out-of-State Races on Dark Days	N/A	N/A	N/A	N/A
<b>Avg. Combined Illinois Handle on Live + Dark Days</b>	<b>100,277</b>	<b>40,726</b>	<b>70,078</b>	<b>211,080</b>
Avg. Ill. Handle on OutofState Races on Live+Dark Days	0	0	0	0
Avg. Out-of-State Handle (Commingled) on Illinois Programs				13,008
Average Total Meet Handle on Live Days				224,088
Average Total Meet Handle on Live + Dark Days				224,088
Combined Illinois Handle	\$ 501,385	203,628	350,389	1,055,402
-Commission (Take Out)	\$ 99,867	41,416	71,392	212,675
Track Commission *	\$ 45,428	18,763	46,496	110,687
Purses Earned **	\$ 45,428	18,763	14,681	78,872
Out-of-State Simulcast Fee (3%)	\$ 0	0	0	0
Privilege Tax	\$ 9,011	3,890	6,711	19,612
Horse Racing Tax Allocation	\$ 0	0	3,504	3,504
Public Pool	\$ 401,518	162,212	278,997	842,727
-Breakage	\$ 5,165	1,908	2,623	9,696
Race Track Improvement Fund	\$ 2,583	954	1,312	4,848
Breakage to General Revenue	\$ 2,583	954	1,312	4,848
-Surcharge	\$ 3,811	2,408	6,976	13,195
Payout to Public	\$ 392,542	157,896	269,398	819,836
Privilege Tax	\$ 9,011	3,890	6,711	19,612
Breakage	\$ 5,165	1,908	2,623	9,696
Horse Racing Tax Allocation	\$ 0	0	3,504	3,504
License Fee	\$ 0	0	0	0
License Fee - Daily Handle	\$ 0	0	0	0
Admission Tax	\$ 0	0	0	0
Uncashed Tickets (1995)	\$ 2,394	972	1,673	5,040
<b>TOTAL REVENUE TO STATE</b>	<b>\$ 16,570</b>	<b>6,770</b>	<b>14,511</b>	<b>37,852</b>
<b>AVG. DAILY STATE REVENUE</b>	<b>\$ 3,314</b>	<b>1,354</b>	<b>2,902</b>	<b>7,570</b>

\* Included are commissions earned by intertrack and off-track outlets.

\*\* Included are purses earned for Fairmount Park and race meets affiliated with intertrack outlets.

## ILLINOIS STATE FAIR - DUQUOIN AUGUST 25, 27-30

	ON TRACK AT DUQUOIN	INTER TRACK ON DUQUOIN	OFF TRACK ON DUQUOIN	ALL LOCATIONS ON DUQUOIN
<b>HARNESS MEET</b>				
Live Programs Raced	5	30	105	140
Total Live + Dark Days	5	0	0	5
Live Races Run	61	0	0	61
Attendance	N/A	N/A	N/A	0
Purse Distribution				1,352,000

Illinois Handle on Illinois Races	379,212	214,706	288,539	882,457
Illinois Handle on Out-of-State Races on Live Days	0	0	0	0
Combined Illinois Handle on Live Days	379,212	214,706	288,539	882,457
Illinois Handle on Out-of-State Races on Dark Days	0	0	0	0
<b>Combined Illinois Handle on Live + Dark Days</b>	<b>379,212</b>	<b>214,706</b>	<b>288,539</b>	<b>882,457</b>
Percentage of Total Combined Illinois Handle	42.97%	24.33%	32.70%	
Ill. Handle on Out-of-State Races on Live + Dark Days	0	0	0	0
Out-of-State Handle (Commingled) on Illinois Programs				93,523
Total Meet Handle on Live Days				975,980
Total Meet Handle on Live + Dark Days				975,980

Average Illinois Handle on Illinois Races	75,842	42,941	57,708	176,491
Avg. Ill. Handle on Out-of-State Races on Live Days	0	0	0	0
Average Combined Illinois Handle on Live Days	75,842	42,941	57,708	176,491
Avg. Ill. Handle on Out-of-State Races on Dark Days	N/A	N/A	N/A	N/A
<b>Avg. Combined Illinois Handle on Live + Dark Days</b>	<b>75,842</b>	<b>42,941</b>	<b>57,708</b>	<b>176,491</b>
Avg. Ill. Handle on Out-of-State Races on Live+Dark Days	0	0	0	0
Avg. Out-of-State Handle (Commingled) on Illinois Programs				18,705
Average Total Meet Handle on Live Days				195,196
Average Total Meet Handle on Live + Dark Days				195,196

Combined Illinois Handle	\$ 379,212	214,706	288,539	882,457
-Commission (Take Out)	\$ 73,543	42,275	58,078	173,896
Track Commission *	\$ 33,682	19,312	37,848	90,842
Purses Earned **	\$ 33,682	19,312	12,090	65,084
Out-of-State Simulcast Fee (3%)	\$ 0	0	0	0
Privilege Tax	\$ 6,179	3,651	5,255	15,085
Horse Racing Tax Allocation	\$ 0	0	2,885	2,885
Public Pool	\$ 305,669	172,431	230,461	708,561
-Breakage	\$ 5,518	2,505	2,922	10,945
Race Track Improvement Fund	\$ 2,759	1,253	1,461	5,473
Breakage to General Revenue	\$ 2,759	1,253	1,461	5,473
-Surcharge	\$ 2,902	2,390	5,332	10,624
Payout to Public	\$ 297,249	167,536	222,207	686,992
Privilege Tax	\$ 6,179	3,651	5,255	15,085
Breakage	\$ 5,518	2,505	2,922	10,945
Horse Racing Tax Allocation	\$ 0	0	2,885	2,885
License Fee	\$ 0	0	0	0
License Fee - Daily Handle	\$ 0	0	0	0
Admission Tax	\$ 0	0	0	0
Uncashed Tickets (1995)	\$ 2,170	1,228	1,651	5,049
<b>TOTAL REVENUE TO STATE</b>	<b>\$ 13,867</b>	<b>7,384</b>	<b>12,713</b>	<b>33,964</b>
<b>AVG. DAILY STATE REVENUE</b>	<b>\$ 2,773</b>	<b>1,477</b>	<b>2,543</b>	<b>6,793</b>

\* Included are commissions earned by intertrack and off-track outlets.

\*\* Included are purses earned for Fairmount Park and race meets affiliated with intertrack outlets.

## SUMMARY OF INTERTRACK WAGERING STATISTICS

ARLINGTON INTERNATIONAL RACECOURSE  
AS AN INTERTRACK SITE

	ILLINOIS LIVE	SIMUL- CASTS	TOTAL
Programs Wagered	888	3,648	4,536
Mutuel Handle	33,395,010	57,627,252	91,022,262
Program Average	37,607	15,797	102,503
Attendance	317,570	0	317,570
Program Average	358	0	358
Handle	33,395,010	57,627,252	91,022,262
-Commission (Take Out)	6,853,874	11,571,602	18,425,476
Track Commission	3,097,159	4,357,317	7,454,476
Purses Earned	3,097,159	4,357,317	7,454,476
Out-of-State Sim. Fee	0	1,728,818	1,728,818
Privilege Tax	659,556	1,128,150	1,787,706
Public Pool	26,541,136	46,055,650	72,596,786
-Breakage	199,260	337,055	536,315
RTIF	99,630	168,528	268,158
Breakage to Gen. Rev.	99,630	168,528	268,158
-Surcharge	402,691	694,637	1,097,328
Payout to Public	25,939,185	45,023,958	70,963,143
Privilege Tax	659,556	1,128,150	1,787,706
Breakage	199,260	337,055	536,315
Admission Tax	17,015	0	17,015
TOTAL STATE REVENUE	<u>875,831</u>	<u>1,465,205</u>	<u>2,341,036</u>

BALMORAL PARK  
AS AN INTERTRACK SITE

	ILLINOIS LIVE	SIMUL- CASTS	TOTAL
Programs Wagered	828	3,666	4,494
Mutuel Handle	12,136,928	12,198,567	24,335,495
Program Average	14,658	3,327	29,391
Attendance	88,887	0	88,887
Program Average	107	0	107
Handle	12,136,928	12,198,567	24,335,495
-Commission (Take Out)	2,514,476	2,488,370	5,002,846
Track Commission	1,133,896	936,888	2,070,784
Purses Earned	1,133,896	936,888	2,070,784
Out-of-State Sim. Fee	0	365,957	365,957
Privilege Tax	246,685	248,637	495,322
Public Pool	9,622,452	9,710,197	19,332,649
-Breakage	71,211	60,553	131,764
RTIF	35,606	30,277	65,882
Breakage to Gen. Rev.	35,606	30,277	65,882
-Surcharge	169,498	184,224	353,722
Payout to Public	9,381,743	9,465,420	18,847,163
Privilege Tax	246,685	248,637	495,322
Breakage	71,211	60,553	131,764
Admission Tax	9,158	0	9,158
TOTAL STATE REVENUE	<u>327,054</u>	<u>309,190</u>	<u>636,244</u>

FAIRMOUNT PARK  
AS AN INTERTRACK SITE

	ILLINOIS LIVE	SIMUL- CASTS	TOTAL
Programs Wagered	773	4,671	5,444
Mutuel Handle	14,665,688	40,846,396	55,512,084
Program Average	18,972	8,745	71,814
Attendance	75,725	0	75,725
Program Average	98	0	98
Handle	14,665,688	40,846,396	55,512,084
-Commission (Take Out)	3,002,522	8,163,619	11,166,141
Track Commission	1,357,873	3,079,446	4,437,319
Purses Earned	1,357,873	3,079,446	4,437,319
Out-of-State Sim. Fee	0	1,225,392	1,225,392
Privilege Tax	286,776	779,335	1,066,111
Public Pool	11,663,166	32,682,777	44,345,943
-Breakage	89,874	229,309	319,183
RTIF	44,937	114,655	159,592
Breakage to Gen. Rev.	44,937	114,655	159,592
-Surcharge	211,733	607,013	818,746
Payout to Public	11,361,559	31,846,455	43,208,014
Privilege Tax	286,776	779,335	1,066,111
Breakage	89,874	229,309	319,183
Admission Tax	7,538	0	7,538
TOTAL STATE REVENUE	<u>384,188</u>	<u>1,008,644</u>	<u>1,392,832</u>

HAWTHORNE RACE COURSE  
AS AN INTERTRACK SITE

	ILLINOIS LIVE	SIMUL- CASTS	TOTAL
Programs Wagered	226	645	871
Mutuel Handle	5,029,990	4,144,803	9,174,793
Program Average	22,257	6,426	40,596
Attendance	38,589	0	38,589
Program Average	171	0	171
Handle	5,029,990	4,144,803	9,174,793
-Commission (Take Out)	1,030,604	818,727	1,849,331
Track Commission	465,561	309,019	774,580
Purses Earned	465,561	309,019	774,580
Out-of-State Sim. Fee	0	124,344	124,344
Privilege Tax	99,482	76,345	175,827
Public Pool	3,999,386	3,326,076	7,325,462
-Breakage	32,924	26,868	59,792
RTIF	16,462	13,434	29,896
Breakage to Gen. Rev.	16,462	13,434	29,896
-Surcharge	59,325	56,511	115,836
Payout to Public	3,907,137	3,242,697	7,149,834
Privilege Tax	99,482	76,345	175,827
Breakage	32,924	26,868	59,792
Admission Tax	2,559	0	2,559
TOTAL STATE REVENUE	<u>134,965</u>	<u>103,213</u>	<u>238,178</u>

## SUMMARY OF INTERTRACK WAGERING STATISTICS

MAYWOOD PARK  
AS AN INTERTRACK SITEQUAD CITY DOWNS  
AS AN INTERTRACK SITE

ILLINOIS LIVE	SIMUL- CASTS	TOTAL	ILLINOIS LIVE	SIMUL- CASTS	TOTAL	
891	4,508	5,399	1,006	4,693	5,699	Programs Wagered
34,249,309	46,190,392	80,439,701	6,556,785	8,325,894	14,882,679	Mutuel Handle
38,439	10,246	90,280	6,518	1,774	14,794	Program Average
294,179	0	294,179	71,840	0	71,840	Attendance
330	0	330	71	0	71	Program Average
34,249,309	46,190,392	80,439,701	6,556,785	8,325,894	14,882,679	Handle
7,034,184	9,255,065	16,289,249	1,368,663	1,675,199	3,043,862	-Commission (Take Out)
3,177,513	3,489,055	6,666,568	615,666	630,984	1,246,650	Track Commission
3,177,513	3,489,055	6,666,568	615,666	630,984	1,246,650	Purses Earned
0	1,385,712	1,385,712	0	249,777	249,777	Out-of-State Sim. Fee
679,158	891,243	1,570,401	137,332	163,454	300,786	Privilege Tax
27,215,125	36,935,327	64,150,452	5,188,122	6,650,695	11,838,817	Public Pool
198,478	261,325	459,803	43,891	54,653	98,544	-Breakage
99,239	130,663	229,902	21,946	27,327	49,272	RTIF
99,239	130,663	229,902	21,946	27,327	49,272	Breakage to Gen. Rev.
464,609	659,366	1,123,975	87,599	117,641	205,240	-Surcharge
26,552,038	36,014,636	62,566,674	5,056,632	6,478,401	11,535,033	Payout to Public
679,158	891,243	1,570,401	137,332	163,454	300,786	Privilege Tax
198,478	261,325	459,803	43,891	54,653	98,544	Breakage
20,711	0	20,711	0	0	0	Admission Tax
<u>898,347</u>	<u>1,152,568</u>	<u>2,050,915</u>	<u>181,223</u>	<u>218,107</u>	<u>399,330</u>	TOTAL STATE REVENUE

SPORTSMAN'S PARK  
AS AN INTERTRACK SITE

ILLINOIS LIVE	SIMUL- CASTS	TOTAL	
441	1,683	2,124	Programs Wagered
17,253,592	17,030,630	34,284,222	Mutuel Handle
39,124	10,119	77,742	Program Average
194,574	0	194,574	Attendance
441	0	441	Program Average
17,253,592	17,030,630	34,284,222	Handle
3,470,827	3,366,686	6,837,513	-Commission (Take Out)
1,576,008	1,270,383	2,846,391	Track Commission
1,576,008	1,270,383	2,846,391	Purses Earned
0	510,919	510,919	Out-of-State Sim. Fee
318,811	315,001	633,812	Privilege Tax
13,782,765	13,663,944	27,446,709	Public Pool
114,388	110,708	225,096	-Breakage
57,194	55,354	112,548	RTIF
57,194	55,354	112,548	Breakage to Gen. Rev.
294,111	321,690	615,801	-Surcharge
13,374,266	13,231,546	26,605,812	Payout to Public
318,811	315,001	633,812	Privilege Tax
114,388	110,708	225,096	Breakage
15,321	0	15,321	Admission Tax
<u>448,520</u>	<u>425,709</u>	<u>874,229</u>	TOTAL STATE REVENUE

## SUMMARY OF OFF TRACK WAGERING STATISTICS

WAUKEGAN  
ARLINGTON INT'L RACECOURSEWEED STREET  
ARLINGTON INT'L RACECOURSE

	WAUKEGAN			WEED STREET		
	ILLINOIS LIVE	SIMUL- CASTS	TOTAL	ILLINOIS LIVE	SIMUL- CASTS	TOTAL
Programs Wagered	1,007	4,703	5,710	1,007	4,701	5,708
Mutuel Handle	14,714,632	27,453,513	42,168,145	22,218,227	43,764,877	65,983,104
Program Average	14,612	5,837	41,875	22,064	9,310	65,524
Handle	14,714,632	27,453,513	42,168,145	22,218,227	43,764,877	65,983,104
-Commission (Take Out)	3,041,167	5,545,792	8,586,959	4,537,936	8,751,164	13,289,100
Track Commission	2,009,514	1,954,220	3,963,734	2,995,304	3,081,114	6,076,418
Purses Earned	588,585	1,954,220	2,542,805	888,729	3,081,114	3,969,843
Out-of-State Sim. Fee	0	823,605	823,605	0	1,312,946	1,312,946
Privilege Tax	295,922	539,212	835,134	431,721	838,341	1,270,062
HRTA	147,146	274,535	421,681	222,182	437,649	659,831
Public Pool	11,673,465	21,907,721	33,581,186	17,680,291	35,013,713	52,694,004
-Breakage	77,623	137,607	215,230	131,782	245,058	376,840
RTIF	38,812	68,804	107,615	65,891	122,529	188,420
Breakage to Gen. Rev.	38,812	68,804	107,615	65,891	122,529	188,420
-Surcharge	319,960	613,809	933,769	483,211	978,338	1,461,549
Payout to Public	11,275,882	21,156,305	32,432,187	17,065,298	33,790,317	50,855,615
Privilege Tax	295,922	539,212	835,134	431,721	838,341	1,270,062
Breakage	77,623	137,607	215,230	131,782	245,058	376,840
HRTA	147,146	274,535	421,681	222,182	437,649	659,831
TOTAL STATE REVENUE	<u>520,691</u>	<u>951,354</u>	<u>1,472,045</u>	<u>785,685</u>	<u>1,521,048</u>	<u>2,306,733</u>

111TH & CORLISS  
BALMORAL RACING CLUBDANVILLE  
BALMORAL RACING CLUB

	111TH & CORLISS			DANVILLE		
	ILLINOIS LIVE	SIMUL- CASTS	TOTAL	ILLINOIS LIVE	SIMUL- CASTS	TOTAL
Programs Wagered	1,007	4,702	5,709	1,007	4,664	5,671
Mutuel Handle	26,624,716	31,801,089	58,425,805	2,898,874	5,626,760	8,525,634
Program Average	26,440	6,763	58,020	2,879	1,206	8,466
Handle	26,624,716	31,801,089	58,425,805	2,898,874	5,626,760	8,525,634
-Commission (Take Out)	5,558,711	6,466,884	12,025,595	605,544	1,159,073	1,764,617
Track Commission	3,672,771	2,276,663	5,949,434	399,989	407,128	807,117
Purses Earned	1,064,989	2,276,663	3,341,652	115,955	407,128	523,083
Out-of-State Sim. Fee	0	954,033	954,033	0	168,803	168,803
Privilege Tax	554,704	641,514	1,196,218	60,611	119,746	180,357
HRTA	266,247	318,011	584,258	28,989	56,268	85,257
Public Pool	21,066,005	25,334,205	46,400,210	2,293,330	4,467,687	6,761,017
-Breakage	127,918	142,334	270,252	15,821	25,426	41,247
RTIF	63,959	71,167	135,126	7,911	12,713	20,624
Breakage to Gen. Rev.	63,959	71,167	135,126	7,911	12,713	20,624
-Surcharge	547,888	683,679	1,231,567	59,945	119,492	179,437
Payout to Public	20,390,199	24,508,192	44,898,391	2,217,564	4,322,769	6,540,333
Privilege Tax	554,704	641,514	1,196,218	60,611	119,746	180,357
Breakage	127,918	142,334	270,252	15,821	25,426	41,247
HRTA	266,247	318,011	584,258	28,989	56,268	85,257
TOTAL STATE REVENUE	<u>948,869</u>	<u>1,101,859</u>	<u>2,050,728</u>	<u>105,421</u>	<u>201,440</u>	<u>306,861</u>

**SUMMARY OF OFF TRACK WAGERING STATISTICS**

**CHAMPAIGN  
BALMORAL RACING CLUB**

**BLOOMINGTON  
BALMORAL RACING CLUB**

<u>ILLINOIS LIVE</u>	<u>SIMUL- CASTS</u>	<u>TOTAL</u>	<u>ILLINOIS LIVE</u>	<u>SIMUL- CASTS</u>	<u>TOTAL</u>	
1,007	4,681	5,688	1,006	4,700	5,706	Programs Wagered
3,200,371	5,514,327	8,714,698	4,089,781	7,479,494	11,569,275	Mutuel Handle
3,178	1,178	8,654	4,065	1,591	11,500	Program Average
3,200,371	5,514,327	8,714,698	4,089,781	7,479,494	11,569,275	Handle
669,181	1,141,796	1,810,977	842,683	1,509,106	2,351,789	-Commission (Take Out)
378,755	401,903	780,658	474,756	531,597	1,006,353	Track Commission
192,022	401,903	593,925	245,387	531,597	776,984	Purses Earned
0	165,430	165,430	0	224,385	224,385	Out-of-State Sim. Fee
66,400	117,417	183,817	81,642	146,732	228,374	Privilege Tax
32,004	55,143	87,147	40,898	74,795	115,693	HRTA
2,531,190	4,372,531	6,903,721	3,247,098	5,970,388	9,217,486	Public Pool
15,680	22,097	37,777	24,742	39,638	64,380	-Breakage
7,840	11,049	18,889	12,371	19,819	32,190	RTIF
7,840	11,049	18,889	12,371	19,819	32,190	Breakage to Gen. Rev.
67,103	120,686	187,789	87,257	164,748	252,005	-Surcharge
2,448,407	4,229,748	6,678,155	3,135,099	5,766,002	8,901,101	Payout to Public
66,400	117,417	183,817	81,642	146,732	228,374	Privilege Tax
15,680	22,097	37,777	24,742	39,638	64,380	Breakage
32,004	55,143	87,147	40,898	74,795	115,693	HRTA
<u>114,084</u>	<u>194,657</u>	<u>308,741</u>	<u>147,282</u>	<u>261,165</u>	<u>408,447</u>	TOTAL STATE REVENUE

**SPRINGFIELD  
OGDEN-FAIRMOUNT**

**GRAYVILLE  
OGDEN-FAIRMOUNT**

<u>ILLINOIS LIVE</u>	<u>SIMUL- CASTS</u>	<u>TOTAL</u>	<u>ILLINOIS LIVE</u>	<u>SIMUL- CASTS</u>	<u>TOTAL</u>	
1,007	4,912	5,919	1,006	4,746	5,752	Programs Wagered
5,343,841	10,667,783	16,011,624	1,984,044	4,984,816	6,968,860	Mutuel Handle
5,307	2,172	15,900	1,972	1,050	6,927	Program Average
5,343,841	10,667,783	16,011,624	1,984,044	4,984,816	6,968,860	Handle
1,141,921	2,233,809	3,375,730	400,740	983,989	1,384,729	-Commission (Take Out)
755,338	785,460	1,540,798	264,249	346,601	610,850	Track Commission
213,754	785,460	999,214	79,362	346,601	425,963	Purses Earned
0	320,033	320,033	0	149,544	149,544	Out-of-State Sim. Fee
119,391	236,178	355,569	37,289	91,395	128,684	Privilege Tax
53,438	106,678	160,116	19,840	49,848	69,688	HRTA
4,201,920	8,433,974	12,635,894	1,583,304	4,000,827	5,584,131	Public Pool
23,108	39,607	62,715	12,756	29,877	42,633	-Breakage
11,554	19,804	31,358	6,378	14,939	21,317	RTIF
11,554	19,804	31,358	6,378	14,939	21,317	Breakage to Gen. Rev.
110,255	238,304	348,559	42,365	109,406	151,771	-Surcharge
4,068,557	8,156,063	12,224,620	1,528,183	3,861,544	5,389,727	Payout to Public
119,391	236,178	355,569	37,289	91,395	128,684	Privilege Tax
23,108	39,607	62,715	12,756	29,877	42,633	Breakage
53,438	106,678	160,116	19,840	49,848	69,688	HRTA
<u>195,937</u>	<u>382,463</u>	<u>578,400</u>	<u>69,885</u>	<u>171,120</u>	<u>241,005</u>	TOTAL STATE REVENUE



## SUMMARY OF OFF TRACK WAGERING STATISTICS

EFFINGHAM  
OGDEN-FAIRMOUNTCARBONDALE  
OGDEN-FAIRMOUNT

	ILLINOIS LIVE	SIMUL- CASTS	TOTAL	ILLINOIS LIVE	SIMUL- CASTS	TOTAL
Programs Wagered	1,004	4,707	5,711	1,005	4,833	5,838
Mutuel Handle	1,842,124	2,595,197	4,437,321	2,706,426	5,268,499	7,974,925
Program Average	1,835	551	4,420	2,693	1,090	7,935
Handle	1,842,124	2,595,197	4,437,321	2,706,426	5,268,499	7,974,925
-Commission (Take Out)	383,339	524,478	907,817	548,512	1,063,581	1,612,093
Track Commission	252,979	184,414	437,393	307,629	374,763	682,392
Purses Earned	73,685	184,414	258,099	162,386	374,763	537,149
Out-of-State Sim. Fee	0	77,856	77,856	0	158,055	158,055
Privilege Tax	38,254	51,842	90,096	51,433	103,315	154,748
HRTA	18,421	25,952	44,373	27,064	52,685	79,749
Public Pool	1,458,785	2,070,719	3,529,504	2,157,914	4,204,918	6,362,832
-Breakage	10,454	13,905	24,359	19,123	26,013	45,136
RTIF	5,227	6,953	12,180	9,562	13,007	22,568
Breakage to Gen. Rev.	5,227	6,953	12,180	9,562	13,007	22,568
-Surcharge	38,711	55,633	94,344	59,343	119,044	178,387
Payout to Public	1,409,620	2,001,181	3,410,801	2,079,448	4,059,861	6,139,309
Privilege Tax	38,254	51,842	90,096	51,433	103,315	154,748
Breakage	10,454	13,905	24,359	19,123	26,013	45,136
HRTA	18,421	25,952	44,373	27,064	52,685	79,749
TOTAL STATE REVENUE	<u>67,129</u>	<u>91,699</u>	<u>158,828</u>	<u>97,620</u>	<u>182,013</u>	<u>279,633</u>

QUINCY  
OGDEN-FAIRMOUNTALTON-BELLE  
OGDEN-FAIRMOUNT

	ILLINOIS LIVE	SIMUL- CASTS	TOTAL	ILLINOIS LIVE	SIMUL- CASTS	TOTAL
Programs Wagered	482	2,359	2,841	1,006	4,793	5,799
Mutuel Handle	650,221	1,306,381	1,956,602	4,975,435	10,343,061	15,318,496
Program Average	1,349	554	4,059	4,946	2,158	15,227
Handle	650,221	1,306,381	1,956,602	4,975,435	10,343,061	15,318,496
-Commission (Take Out)	134,629	261,779	396,408	1,023,586	2,071,548	3,095,134
Track Commission	88,975	92,382	181,357	601,278	729,131	1,330,409
Purses Earned	26,009	92,382	118,391	273,649	729,131	1,002,780
Out-of-State Sim. Fee	0	39,191	39,191	0	310,292	310,292
Privilege Tax	13,143	24,760	37,903	98,905	199,563	298,468
HRTA	6,502	13,064	19,566	49,754	103,431	153,185
Public Pool	515,592	1,044,602	1,560,194	3,951,849	8,271,513	12,223,362
-Breakage	3,760	6,754	10,514	29,900	59,547	89,447
RTIF	1,880	3,377	5,257	14,950	29,774	44,724
Breakage to Gen. Rev.	1,880	3,377	5,257	14,950	29,774	44,724
-Surcharge	13,161	26,719	39,880	106,562	228,324	334,886
Payout to Public	498,671	1,011,129	1,509,800	3,815,387	7,983,642	11,799,029
Privilege Tax	13,143	24,760	37,903	98,905	199,563	298,468
Breakage	3,760	6,754	10,514	29,900	59,547	89,447
HRTA	6,502	13,064	19,566	49,754	103,431	153,185
TOTAL STATE REVENUE	<u>23,405</u>	<u>44,578</u>	<u>67,983</u>	<u>178,559</u>	<u>362,541</u>	<u>541,100</u>

**SUMMARY OF OFF TRACK WAGERING STATISTICS**

**STATE & LAKE  
HAWTHORNE RACE COURSE**

**OAK BROOK TERRACE  
HAWTHORNE RACE COURSE**

ILLINOIS LIVE	SIMUL- CASTS	TOTAL	ILLINOIS LIVE	SIMUL- CASTS	TOTAL	
1,007	4,703	5,710	1,007	4,704	5,711	Programs Wagered
17,812,354	29,237,849	47,050,203	29,207,489	43,155,091	72,362,580	Mutuel Handle
17,689	6,217	46,723	29,004	9,174	71,860	Program Average
17,812,354	29,237,849	47,050,203	29,207,489	43,155,091	72,362,580	Handle
3,650,812	5,884,434	9,535,246	5,987,831	8,706,126	14,693,957	-Commission (Take Out)
2,410,888	2,071,509	4,482,397	3,952,769	3,066,334	7,019,103	Track Commission
712,494	2,071,509	2,784,003	1,168,300	3,066,334	4,234,634	Purses Earned
0	877,135	877,135	0	1,294,653	1,294,653	Out-of-State Sim. Fee
349,306	571,903	921,209	574,687	847,254	1,421,941	Privilege Tax
178,124	292,378	470,502	292,075	431,551	723,626	HRTA
14,161,542	23,353,415	37,514,957	23,219,658	34,448,965	57,668,623	Public Pool
110,098	166,940	277,038	174,510	223,522	398,032	-Breakage
55,049	83,470	138,519	87,255	111,761	199,016	RTIF
55,049	83,470	138,519	87,255	111,761	199,016	Breakage to Gen. Rev.
383,591	661,392	1,044,983	623,989	950,215	1,574,204	-Surcharge
13,667,853	22,525,083	36,192,936	22,421,159	33,275,228	55,696,387	Payout to Public
349,306	571,903	921,209	574,687	847,254	1,421,941	Privilege Tax
110,098	166,940	277,038	174,510	223,522	398,032	Breakage
178,124	292,378	470,502	292,075	431,551	723,626	HRTA
<u>637,528</u>	<u>1,031,221</u>	<u>1,668,749</u>	<u>1,041,272</u>	<u>1,502,327</u>	<u>2,543,599</u>	TOTAL STATE REVENUE

**WEST JACKSON  
MAYWOOD PARK TROT**

**NORTH AURORA  
MAYWOOD PARK TROT**

ILLINOIS LIVE	SIMUL- CASTS	TOTAL	ILLINOIS LIVE	SIMUL- CASTS	TOTAL	
1,007	4,703	5,710	1,007	4,693	5,700	Programs Wagered
16,342,637	26,778,279	43,120,916	12,114,860	14,948,741	27,063,601	Mutuel Handle
16,229	5,694	42,821	12,031	3,185	26,875	Program Average
16,342,637	26,778,279	43,120,916	12,114,860	14,948,741	27,063,601	Handle
3,330,257	5,312,388	8,642,645	2,464,218	2,985,729	5,449,947	-Commission (Take Out)
2,198,578	1,871,809	4,070,387	1,625,486	1,051,613	2,677,099	Track Commission
653,705	1,871,809	2,525,514	484,594	1,051,613	1,536,207	Purses Earned
0	803,348	803,348	0	448,462	448,462	Out-of-State Sim. Fee
314,548	497,639	812,187	232,989	284,554	517,543	Privilege Tax
163,426	267,783	431,209	121,149	149,487	270,636	HRTA
13,012,380	21,465,891	34,478,271	9,650,642	11,963,012	21,613,654	Public Pool
98,968	156,869	255,837	75,451	82,304	157,755	-Breakage
49,484	78,435	127,919	37,726	41,152	78,878	RTIF
49,484	78,435	127,919	37,726	41,152	78,878	Breakage to Gen. Rev.
351,279	601,558	952,837	261,089	331,705	592,794	-Surcharge
12,562,133	20,707,464	33,269,597	9,314,102	11,549,003	20,863,105	Payout to Public
314,548	497,639	812,187	232,989	284,554	517,543	Privilege Tax
98,968	156,869	255,837	75,451	82,304	157,755	Breakage
163,426	267,783	431,209	121,149	149,487	270,636	HRTA
<u>576,942</u>	<u>922,291</u>	<u>1,499,233</u>	<u>429,589</u>	<u>516,345</u>	<u>945,934</u>	TOTAL STATE REVENUE

## SUMMARY OF OFF TRACK WAGERING STATISTICS

EMPRESS (JOLIET)  
MAYWOOD PARK TROTJOLIET  
NATIONAL JOCKEY CLUB

	ILLINOIS LIVE	SIMUL- CASTS	TOTAL	ILLINOIS LIVE	SIMUL- CASTS	TOTAL
Programs Wagered	1,007	4,695	5,702	1,007	4,698	5,705
Mutuel Handle	5,029,771	6,726,609	11,756,380	7,053,243	9,727,634	16,780,877
Program Average	4,995	1,433	11,675	7,004	2,071	16,664
Handle	5,029,771	6,726,609	11,756,380	7,053,243	9,727,634	16,780,877
-Commission (Take Out)	1,026,604	1,350,309	2,376,913	1,455,039	1,977,087	3,432,126
Track Commission	601,934	475,637	1,077,571	960,605	695,797	1,656,402
Purses Earned	276,637	475,637	752,274	282,130	695,797	977,927
Out-of-State Sim. Fee	0	201,798	201,798	0	291,829	291,829
Privilege Tax	97,735	129,971	227,706	141,772	196,388	338,160
HRTA	50,298	67,266	117,564	70,532	97,276	167,808
Public Pool	4,003,167	5,376,300	9,379,467	5,598,204	7,750,547	13,348,751
-Breakage	31,414	39,264	70,678	38,641	46,955	85,596
RTIF	15,707	19,632	35,339	19,321	23,478	42,798
Breakage to Gen. Rev.	15,707	19,632	35,339	19,321	23,478	42,798
-Surcharge	107,194	148,202	255,396	148,592	214,766	363,358
Payout to Public	3,864,559	5,188,834	9,053,393	5,410,971	7,488,826	12,899,797
Privilege Tax	97,735	129,971	227,706	141,772	196,388	338,160
Breakage	31,414	39,264	70,678	38,641	46,955	85,596
HRTA	50,298	67,266	117,564	70,532	97,276	167,808
TOTAL STATE REVENUE	<u>179,447</u>	<u>236,501</u>	<u>415,948</u>	<u>250,945</u>	<u>340,619</u>	<u>591,564</u>

CRESTWOOD  
NATIONAL JOCKEY CLUBPERU  
NATIONAL JOCKEY CLUB

	ILLINOIS LIVE	SIMUL- CASTS	TOTAL	ILLINOIS LIVE	SIMUL- CASTS	TOTAL
Programs Wagered	1,007	4,704	5,711	1,005	4,665	5,670
Mutuel Handle	32,360,478	37,594,920	69,955,398	3,115,817	2,988,758	6,104,575
Program Average	32,136	7,992	69,469	3,100	641	6,074
Handle	32,360,478	37,594,920	69,955,398	3,115,817	2,988,758	6,104,575
-Commission (Take Out)	6,664,566	7,617,872	14,282,438	649,110	599,852	1,248,962
Track Commission	4,397,663	2,679,174	7,076,837	382,080	211,336	593,416
Purses Earned	1,294,419	2,679,174	3,973,593	171,370	211,336	382,706
Out-of-State Sim. Fee	0	1,127,848	1,127,848	0	89,663	89,663
Privilege Tax	648,879	755,727	1,404,606	64,502	57,629	122,131
HRTA	323,605	375,949	699,554	31,158	29,888	61,046
Public Pool	25,695,912	29,977,048	55,672,960	2,466,707	2,388,906	4,855,613
-Breakage	181,087	185,081	366,168	16,956	15,793	32,749
RTIF	90,544	92,541	183,084	8,478	7,897	16,375
Breakage to Gen. Rev.	90,544	92,541	183,084	8,478	7,897	16,375
-Surcharge	691,216	824,001	1,515,217	66,017	63,623	129,640
Payout to Public	24,823,609	28,967,966	53,791,575	2,383,734	2,309,490	4,693,224
Privilege Tax	648,879	755,727	1,404,606	64,502	57,629	122,131
Breakage	181,087	185,081	366,168	16,956	15,793	32,749
HRTA	323,605	375,949	699,554	31,158	29,888	61,046
TOTAL STATE REVENUE	<u>1,153,571</u>	<u>1,316,757</u>	<u>2,470,328</u>	<u>112,616</u>	<u>103,310</u>	<u>215,926</u>

## SUMMARY OF OFF TRACK WAGERING STATISTICS

ROCKFORD  
QUAD CITY DOWNSRICHMOND  
QUAD CITY DOWNS

ILLINOIS LIVE	SIMUL- CASTS	TOTAL	ILLINOIS LIVE	SIMUL- CASTS	TOTAL	
1,007	4,695	5,702	909	4,310	5,219	Programs Wagered
11,332,445	14,982,087	26,314,532	3,595,411	6,040,423	9,635,834	Mutuel Handle
11,254	3,191	26,132	3,955	1,401	10,600	Program Average
11,332,445	14,982,087	26,314,532	3,595,411	6,040,423	9,635,834	Handle
2,352,212	3,056,681	5,408,893	729,846	1,210,254	1,940,100	-Commission (Take Out)
1,553,627	1,075,582	2,629,209	481,535	426,027	907,562	Track Commission
453,298	1,075,582	1,528,880	143,816	426,027	569,843	Purses Earned
0	449,463	449,463	0	181,213	181,213	Out-of-State Sim. Fee
231,963	306,233	538,196	68,541	116,583	185,124	Privilege Tax
113,324	149,821	263,145	35,954	60,404	96,358	HRTA
8,980,233	11,925,406	20,905,639	2,865,565	4,830,169	7,695,734	Public Pool
63,386	68,863	132,249	22,343	33,706	56,049	-Breakage
31,693	34,432	66,125	11,172	16,853	28,025	RTIF
31,693	34,432	66,125	11,172	16,853	28,025	Breakage to Gen. Rev.
245,600	330,668	576,268	79,685	136,839	216,524	-Surcharge
8,671,247	11,525,875	20,197,122	2,763,537	4,659,624	7,423,161	Payout to Public
231,963	306,233	538,196	68,541	116,583	185,124	Privilege Tax
63,386	68,863	132,249	22,343	33,706	56,049	Breakage
113,324	149,821	263,145	35,954	60,404	96,358	HRTA
<u>408,673</u>	<u>524,917</u>	<u>933,590</u>	<u>126,838</u>	<u>210,693</u>	<u>337,531</u>	TOTAL STATE REVENUE

## 1997 MAJOR STAKES RACES

## THOROUGHBRED

DATE	Sportsman's Park	PURSE	HORSE	JOCKEY
May 10	Illinois Derby	\$500,000	Wild Rush	K. Desormeaux
May 4	Sixty Sails Handicap	\$300,000	Top Secret	C. Perret
April 26	National Jockey Club Handicap	\$200,000	Bucks Nephew	G. Gomez
April 27	National Jockey Club Oaks	\$150,000	Witchful Thinking	L. Melancon
April 5	Sportsman's Park Breeders' Cup	\$104,000	Michael's Star	M. Guidry
<b>Arlington International Racecourse</b>				
August 24	Arlington Million	\$1,000,000	Marlin	G. Stevens
August 24	Beverly D	\$500,000	Memories of Silver	J. Bailey
August 24	Secretariat	\$400,000	Honor Glide	G. Gomez
July 20	American Derby	\$200,000	Honor Glide	G. Gomez
July 4	Star and Stripes Breeders' Cup Turf	\$200,000	Lakeshore Road	C. Borel
<b>Hawthorne Race Course</b>				
October 11	Hawthorne Gold Cup	\$300,000	Buck's Boy	M. Guidry
October 12	Hawthorne Derby	\$200,000	River Squall	C. Perret
November 1	Robert F. Carey Memorial Handicap	\$150,000	Trail City	J. Bailey
November 15	Hawthorne Juvenile	\$150,000	Well Noted	S. Laviolette
December 20	Illinois Breeders' Futurity	\$112,075	Ritzy Playboy	E. Perez
<b>Fairmount Park</b>				
June 3	Slight in the Rear Stakes	\$26,000	Monks Sister	J. Felix
July 4	Tex's Zing Stakes	\$26,000	Daisy Junebug	C. Silva
August 5	Pete Condellone Handicap	\$26,000	Ballyneocty Saint	N. Medina
September 1	Bungalow Handicap	\$26,000	Bonita Meadow	J. Diaz
September 23	All Sold Out Stakes	\$26,000	Galaxy Girl	D. Gall
October 4	Marluels' Troy Stakes	\$26,000	Zie Life	D. Gall

## HARNESS

DATE	Hawthorne Race Course	PURSE	HORSE	DRIVER
February 8	Erwin F. Dygert Memorial Trot	\$100,000	Daytime Torch	H. Wilson
February 2	Suburban Downs Pacing Derby	\$99,500	Falcon Dakota	J. Anderson
January 31	Pretty Direct Pace	\$50,750	Pacific Flight N	J. Anderson
January 25	Whizzer R. White Pace	\$50,000	Racing Fund	T. Ritchie
January 18	Suburban Downs Pacing Series Final	\$30,000	Canaco On Time	A. Morgan
<b>Balmoral Park</b>				
October 12	Cardinal 2-Year-Old Colt and Gelding Pace	\$83,400	Mystical Hawk	B. Holland
October 12	Violet 2-Year-Old Filly Pace	\$75,000	Ohyouprettything	J. Anderson
October 12	Cardinal 2-Year-Old Colt and Gelding Trot	\$57,900	Arc Welder	Da. Magee
October 12	Violet 2-Year-Old Filly Trot	\$55,900	Miss Clara T.	D. Hamilton
May 25	Cardinal 2-Year-Old Colt and Gelding Trot	\$48,800	Source of Luck	M. Carpenter
<b>Maywood Park</b>				
November 14	Windy City Pace	\$270,000	Arturo	D. Palone
October 31	Abe Lincoln Stake	\$120,700	Rustler Hanover	P. MacDonell
November 28	Maywood Pace	\$100,000	Duncan MacLeod	A. Morgan
October 31	Galt Trot (1st Div.)	\$50,500	Lord Stormont	D. Brown
October 31	Galt Trot (2nd Div.)	\$50,500	Raging Samantha	D. Miller
<b>Sportsman's Park</b>				
September 13	Orange and Blue 2-Year-Old Colt Pace	\$300,000	Big Tom	J. Anderson
September 13	Orange and Blue 2-Year-Old Filly Pace	\$235,000	Ohyouprettything	J. Anderson
June 28	American National 3-Year-Old Colt Pace	\$233,000	Gothic Dream	J. Campbell
July 5	American National Aged Pace	\$208,000	Falcon Dakota	J. Anderson
August 23	American National 3-Year-Old Colt Trot	\$190,500	Malabar Man	M. Burroughs
<b>Fairmount Park</b>				
November 4	Saluki Series Final	\$20,000	Sport Hill	E. Miller
October 14	Specs Boy Stakes	\$16,500	Kan Holly	J. Logan
December 2	Wrex Vandecar Memorial	\$15,750	Casino Fortune	T. Curtin

## 1997 LEADING THOROUGHBRED JOCKEYS/TRAINERS

<b>SPORTSMAN'S PARK</b>						
<b>JOCKEY</b>		<b>MOUNTS</b>	<b>FIRST</b>	<b>SECOND</b>	<b>THIRD</b>	<b>PURSES WON</b>
1.	Mark Guidry	498	118	92	70	\$1,851,476
2.	Garrett Gomez	343	83	55	50	\$1,460,135
3.	Jesse Campbell	434	60	61	62	\$973,795
4.	Randall Meier	377	57	49	49	\$917,701
5.	Shane Laviolette	398	47	45	44	\$778,881
<b>TRAINER</b>		<b>STARTS</b>	<b>FIRST</b>	<b>SECOND</b>	<b>THIRD</b>	<b>% WIN</b>
1.	Richard P. Hazelton	173	32	26	22	18.50%
2.	Thomas F. Tomillo	215	26	22	19	12.09%
3.	Michael L. Reavis	88	23	12	14	26.14%
4.	Charles J. Vinci	133	21	21	21	15.79%
5.	Tom Dorris	164	19	27	20	11.59%

<b>ARLINGTON INTERNATIONAL RACECOURSE</b>						
<b>JOCKEY</b>		<b>MOUNTS</b>	<b>FIRST</b>	<b>SECOND</b>	<b>THIRD</b>	<b>PURSES WON</b>
1.	Garrett Gomez	706	196	133	109	\$3,511,488
2.	Mark Guidry	683	145	129	85	\$2,468,071
3.	Earlie Fires	438	67	52	49	\$1,080,515
4.	Carlos Silva	540	65	66	80	\$1,065,410
5.	Shane Laviolette	619	65	65	88	\$1,019,072
<b>TRAINER</b>		<b>STARTS</b>	<b>FIRST</b>	<b>SECOND</b>	<b>THIRD</b>	<b>% WIN</b>
1.	Harvey L. Vanier	305	58	63	43	19.02%
2.	Hilary Pridham	169	44	26	23	26.04%
3.	Tom Dorris	206	35	40	26	16.99%
4.	Tom Swearingen	158	31	26	23	19.62%
5.	Louie Roussel, III	90	30	20	6	33.33%

<b>HAWTHORNE RACE COURSE</b>						
<b>JOCKEY</b>		<b>MOUNTS</b>	<b>FIRST</b>	<b>SECOND</b>	<b>THIRD</b>	<b>PURSES WON</b>
1.	Jesse Campbell	445	73	59	43	\$904,175
2.	Randall Meier	389	68	56	46	\$927,893
3.	Carlos Silva	403	60	48	62	\$903,312
4.	Shane Laviolette	446	60	62	56	\$994,626
5.	Eusebio Razo Jr.	326	48	40	40	\$824,602
<b>TRAINER</b>		<b>STARTS</b>	<b>FIRST</b>	<b>SECOND</b>	<b>THIRD</b>	<b>% WIN</b>
1.	Tom Dorris	199	32	34	20	16.08%
2.	Tom Swearingen	163	29	23	21	17.79%
3.	Jere R. Smith, Sr.	100	25	16	8	25.00%
4.	Richard P. Hazelton	137	25	18	20	18.25%
5.	Michael L. Reavis	93	20	16	10	21.51%

<b>FAIRMOUNT PARK</b>						
<b>JOCKEY</b>		<b>MOUNTS</b>	<b>FIRST</b>	<b>SECOND</b>	<b>THIRD</b>	<b>PURSES WON</b>
1.	Dave Gall	798	178	163	144	\$1,851,476
2.	Jim Bielby	632	113	85	77	\$1,460,135
3.	Patrick Boxie	521	98	66	79	\$973,795
4.	Mike Gale	665	96	119	110	\$917,701
5.	Tommy Pompell	514	87	75	71	\$778,881
<b>TRAINER</b>		<b>STARTS</b>	<b>FIRST</b>	<b>SECOND</b>	<b>THIRD</b>	<b>% WIN</b>
1.	Ron Brandenburg	605	109	96	96	18.02%
2.	Kim Hammond	301	64	51	48	21.26%
3.	Raul Martinez	303	60	59	45	19.80%
4.	Jerry Hammond	389	54	64	59	13.88%
5.	Jimmy Wiser	223	52	36	23	23.32%



## 1997 LEADING HARNES DRIVERS/TRAINERS

<b>HAWTHORNE RACE COURSE</b>						
DRIVER	STARTS	FIRST	SECOND	THIRD	PURSES WON	
1. Dave Magee	554	103	77	81	\$637,102	
2. Anthony Morgan	552	102	105	64	\$658,664	
3. Dale Hiteman	426	67	55	47	\$431,773	
4. Joe Anderson	170	52	30	25	\$449,931	
5. Ken Holliday	270	38	38	38	\$291,077	
TRAINER	STARTS	FIRST	SECOND	THIRD	% WIN	
1. Joe Anderson	213	66	36	30	30.99%	
2. Jim Eaton	120	24	20	17	20.00%	
3. Ken Rucker	103	16	15	15	15.53%	
4. Homer Hochstetler	90	15	15	13	16.67%	
5. David Mc Caffrey	75	12	20	9	16.00%	

<b>BALMORAL PARK</b>						
DRIVER	STARTS	FIRST	SECOND	THIRD	PURSES WON	
1. Dave Maxwell	1048	161	161	129	\$612,445	
2. Anthony Morgan	648	139	119	80	\$537,717	
3. Art Gregory Jr.	964	129	115	116	\$502,696	
4. Doug Hamilton	746	110	80	91	\$477,396	
5. Dean Magee	792	99	109	101	\$453,285	
TRAINER	STARTS	FIRST	SECOND	THIRD	% WIN	
1. Joe Anderson	275	75	35	35	27.27%	
2. Ken Rucker	277	46	34	45	16.61%	
3. Homer Hochstetler	285	46	41	35	16.14%	
4. Dave Maxwell	242	42	47	27	17.36%	
5. Robert Phillips	368	42	32	43	11.41%	

<b>MAYWOOD PARK</b>						
DRIVER	STARTS	FIRST	SECOND	THIRD	PURSES WON	
1. Anthony Morgan	827	215	151	121	\$986,032	
2. Andy Miller	837	136	134	124	\$622,809	
3. Dave Magee	563	116	95	75	\$578,967	
4. Ken Holliday	406	73	57	70	\$313,525	
5. Randall Jacobs	582	71	56	95	\$311,583	
TRAINER	STARTS	FIRST	SECOND	THIRD	% WIN	
1. Joe Anderson	141	55	27	16	39.01%	
2. David Mc Caffrey	262	44	43	56	16.79%	
3. Doug Larsen	146	27	23	19	18.49%	
4. Mitch Mac Kenzie	110	26	12	14	23.64%	
5. Monroe Duncan	191	24	32	26	12.57%	

<b>SPORTSMAN'S PARK</b>						
DRIVER	STARTS	FIRST	SECOND	THIRD	PURSES WON	
1. Dave Magee	802	159	130	97	\$1,416,971	
2. Anthony Morgan	653	139	97	70	\$1,102,646	
3. Andy Miller	903	131	145	109	\$1,036,040	
4. Dale Hiteman	752	91	92	106	\$729,659	
5. Joe Anderson	224	75	37	18	\$992,745	
TRAINER	STARTS	FIRST	SECOND	THIRD	% WIN	
1. Joe Anderson	377	104	54	37	27.59%	
2. Brian Pinsky	297	41	38	37	13.80%	
3. Doug Larsen	240	40	37	24	16.67%	
4. Jim Eaton	162	35	19	30	21.60%	
5. David Mc Caffrey	198	29	32	24	14.65%	

<b>FAIRMOUNT PARK</b>						
DRIVER	STARTS	FIRST	SECOND	THIRD	PURSES WON	
1. Tim Curtin	783	160	121	102	\$401,705	
2. Tom Simmons	654	122	88	88	\$284,642	
3. Le Moyne Svendsen	476	76	61	53	\$161,116	
4. Dave Fagan	394	65	80	70	\$198,221	
5. Larry Binkley	402	63	41	60	\$111,840	
TRAINER	STARTS	FIRST	SECOND	THIRD	% WIN	
1. Roy Saul	212	65	43	27	30.66%	
2. John Lee	271	47	51	39	17.34%	
3. Tom Simmons	200	43	25	29	21.50%	
4. Larry Binkley	205	35	21	36	17.07%	
5. Debra Swift	215	33	48	36	15.35%	

**ILLINOIS DEPARTMENT OF AGRICULTURE  
HORSE RACING PROGRAMS  
ILLINOIS STANDARDBRED BREEDERS FUND  
1997 PURSES AND AWARDS PAID**

<u>TRACK/ASSOCIATION</u>	<u>STAKES AND LATE CLOSERS</u>		<u>OVERNITES</u>		<u>BREEDERS' AWARDS</u>	<u>TOTAL PURSES AND BREEDERS' AWARDS</u>
	<u>RACES</u>	<u>PURSES</u>	<u>RACES</u>	<u>PURSES</u>		
HAWTHORNE RACE COURSE <i>Suburban Downs</i>	34	\$355,415	328	\$1,969,200	\$170,444	\$2,495,059
MAYWOOD PARK <i>February - May</i>	34	\$287,000	307	\$1,234,310	\$112,921	\$1,634,231
<i>October - December</i>	41	\$574,000	274	\$1,099,500	\$107,808	\$1,781,308
BALMORAL PARK <i>Balmoral Racing Club</i>	42	\$1,198,640	795	\$3,043,365	\$317,697	\$4,559,702
SPORTSMAN'S PARK <i>Chicago Downs/Fox Valley Trot</i>	109	\$2,746,100	453	\$2,768,800	\$368,223	\$5,883,123
FAIRMOUNT PARK <i>Ogden-Fairmount</i>	9	\$70,250	174	\$400,320	\$88,759	\$559,329
ILLINOIS STATE FAIR <i>Chi. Downs, Maywood &amp; Balmoral</i>	51	\$679,000	3	\$1,500	\$4,420	\$684,920
DU QUOIN STATE FAIR <i>Chi. Downs, Maywood &amp; Balmoral</i>	<u>28</u>	<u>\$369,400</u>	<u>8</u>	<u>\$12,000</u>	<u>\$3,388</u>	<u>\$384,788</u>
PARI-MUTUEL TOTALS	348	\$6,279,805	2,342	\$10,528,995	\$1,173,660	\$17,982,460
NON-PARI-MUTUEL RACING						
<i>County Fairs</i>	555	\$1,093,848				\$1,093,848
<i>ICF Aged Stakes/Mt. Sterling</i>	4	\$16,000				\$16,000
<i>Downstate Classic</i>						
<i>Decatur (3 Y.O.)</i>	9	\$55,041				\$55,041
<i>Lincoln (2 Y.O.)</i>	9	\$47,750				\$47,750
<i>Summer Previews, Springfield/DuQuoin</i>			38	\$32,400		\$32,400
<i>Fall Racing, Springfield/DuQuoin</i>			30	\$32,300		\$32,300
<i>Illinois Stallion Stakes/Martinsville</i>	9	\$27,600				\$27,600
NON-PARI-MUTUEL TOTALS	586	\$1,240,239	68	\$64,700		\$1,304,939
ILLINOIS DEPT. OF AGRICULTURE <i>Million Dollar Bonus for 2-Year-Olds*</i>						\$1,000,000
1997 GRAND TOTALS	<u>934</u>	<u>\$7,520,044</u>	<u>2,410</u>	<u>\$10,593,695</u>	<u>\$1,173,660</u>	<u>\$20,287,399</u>

These 1997 figures are only for races restricted to Illinois Conceived and Foaled Standardbreds (ICF) that are properly registered with the Department of Agriculture, and do not include Illinois Conceived and Foaled and/or Illinois Owned (ICF/IO) races and open company stakes and overnite winners.

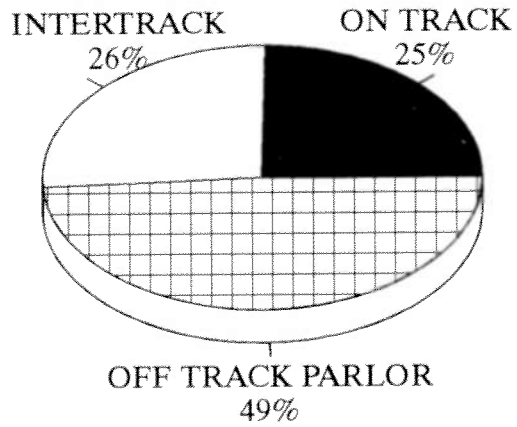
\* A Million Dollar Bonus was awarded in 1997 to the owners of two-year-olds who won three out of four designated stakes. There was a winner from each of the four divisions, each horse's owner received \$250,000.

ILLINOIS DEPARTMENT OF AGRICULTURE  
HORSE RACING PROGRAMS  
1997 ILLINOIS THOROUGHBRED BREEDERS FUND PURSES AND AWARDS PAID

TRACK/ASSOCIATION	IL-REGISTERED STAKES RACES	O'NITES W/O SUPPLEMENTS RACES	OPEN RACES	WINNERS' SHARE INCL. ANY OWNERS AWARDS	PLACE/SHOW OWNERS' AWARDS	BREEDERS' AWARDS	TOTAL PURSES AND AWARDS
SPORTSMAN'S PARK <i>National Jockey Club</i>	8	148	120	\$1,274,736	182,873	335,648	\$5,082,757
ARLINGTON RACECOURSE <i>Arlington International</i>	7	221	201	\$2,229,780	298,396	518,939	\$7,555,215
HAWTHORNE RACE COURSE <i>Hawthorne Race Course, Inc.</i>	13	199	170	\$1,878,968	242,121	412,920	\$6,418,684
FAIRMOUNT PARK <i>Ogden-Fairmount, Inc.</i>	6	132	506	\$1,720,712	230,737	210,453	\$2,779,402
PARI-MUTUEL TOTALS	34	700	997	\$7,104,196	\$954,127	\$1,477,960	\$21,836,058
Stallion Owners Awards							\$170,967
County Fairs Racing							\$57,185
<b>TOTAL OF PROGRAM</b>							<b>\$22,064,210</b>

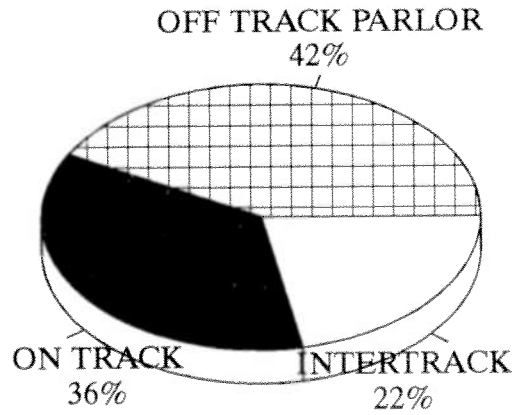
1997 ILLINOIS HANDLE  
ILLINOIS RACES AND SIMULCAST RACES

---



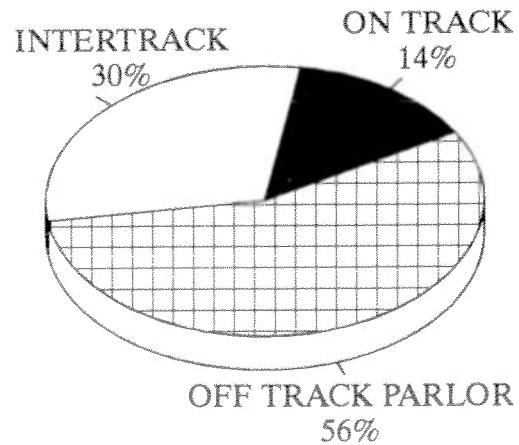
---

ILLINOIS RACES ONLY



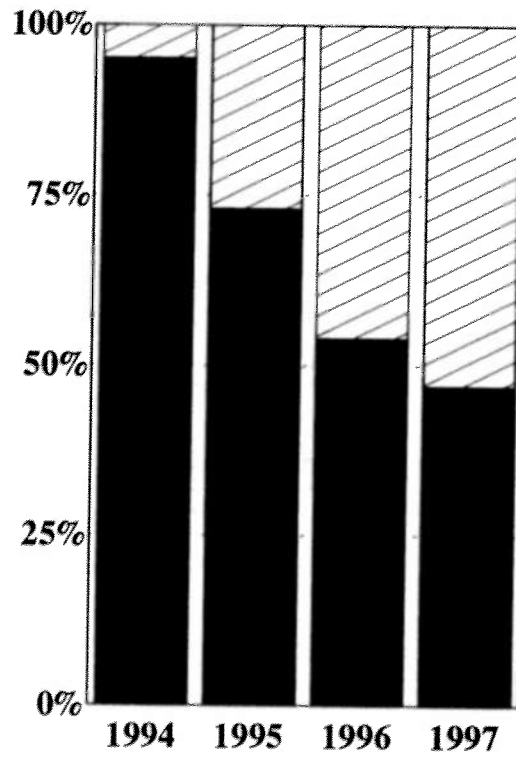
---

SIMULCAST RACES ONLY



# ILLINOIS HANDLE

■ ILLINOIS RACES %   □ SIMULCAST RACES %



<b>SIMULCAST RACES %</b>	<b>5</b>	<b>27</b>	<b>46</b>	<b>53</b>
<b>ILLINOIS RACES %</b>	<b>95</b>	<b>73</b>	<b>54</b>	<b>47</b>

Full Card Simulcasting Began June 1, 1995